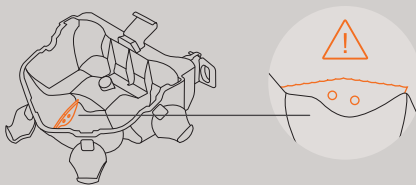


## CAUTIONS

Take great care with the cutting parts to avoid accidents.

### Warning!

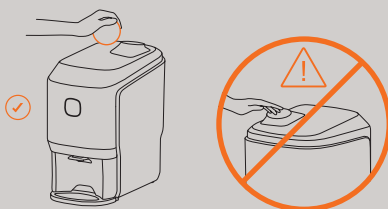
Take care with the blade when removing the shafts and drums unit



Never operate the machine from the side or from the back. Always load the feeder from the front of the machine.

### Warning!

Do not attempt to access the juicing zone from the feeder with your hand, to avoid accidents.



**This is not a toy, so prevent children from playing with the appliance.**

This appliance can be used by children over the age of 8 or older, if they are supervised or if they have received instructions relating to the safe use of the appliance and they can understand the risks entailed. User cleaning and maintenance must not be carried out by children, unless they are 8 years of age or older and they are supervised. Keep the appliance and its cable out of reach of children under the age of 8.

This appliance can be used by people with impaired physical, sensorial or mental capacities or who lack experience or knowledge, if they are supervised or have received adequate training with respect to the safe operation of the appliance and they understand the risks entailed.

This machine is designed for squeezing citrus fruit of the sizes indicated in this manual. Do not use other different fruit or sizes to those specified in the manual.

Before cleaning the machine or carrying out any maintenance, always unplug from the mains.

Be very careful with the cutting elements, to avoid possible accidents.

The parts that are in contact with food must be cleaned according to the instructions that you can read in the cleaning chapter.

If the power cable is damaged, it must be replaced with an original power supply cable from the same manufacturer, in order to avoid hazards.

Do not operate the machine from behind, or try to get it to work without safety elements.

This appliance is intended to be used at home and other environments such as:

- Staff kitchen areas in shops, offices and other working environments;
- Farm Shops;
- Delicatessen and Coffee Shops;
- Juice Bars;
- Hotels, motels and B&B's.

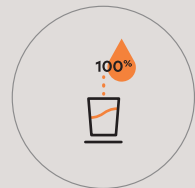
If you need more information, you can access the full user manual here

Small. Smart. Stylish

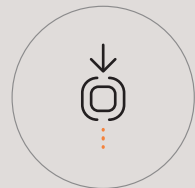
**SOUL**  
SERIES 2

Quick Start Guide

## Maximum innovation in the minimum space



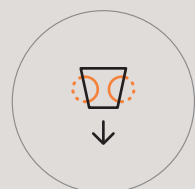
PURE JUICE



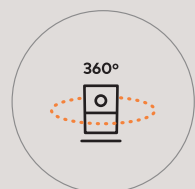
PUSH&JUICE



ALL CITRUS



CONICAL  
SYSTEM



360 DESIGN



EASY TO CLEAN

### 01.

## Switch your Soul on

**Plug the machine into the electricity grid.**  
Make sure that the network voltage coincides with the voltage shown on the machine Identification Label.



**Connect your juicer**  
as you can see explained on [Zumex Connect](#)



**Press the front button for 1 sec until a steady white light appears.**  
Check that the top lid, waste collection tray and door are in place correctly. Remember to open the tap and use a glass at the juice outlet.

### 02.

## Juice

To juice, simply press the front button. You will see the colour of the button change automatically from white to orange.

### Understand the language of Soul



**WHITE.** Ready to juice.



**FLASHING WHITE.** Waste collection tray incorrectly positioned / Front door open / Top lid incorrectly positioned



**ORANGE.** Juicing correctly.



**FLASHING ORANGE.** Empty waste collection tray / Juicing system blocked / PulpOut System blocked



The machine will notify with three beeps when the waste collection tray is full and needs to be emptied.

### 03.

## Switch your Soul off

Press the front button for 2 secs, or disconnect the network cable directly.

If the machine does not detect any oranges, it will stop, approximately 20 secs after the last orange has gone through.

JUICE  
EXPERIENCE