



MOLECULAR BIOLOGY

PCR Consumables, Sample Library Tubes, and Deep Well Plates



Deep Well Plates

Labcon's deep well plates are ideal for sample collection, combinatorial chemistry, and library storage and access. They can be used for high throughput sample mixing and are compatible with most liquid handling robots. They are formatted to the dimensional standards set by Society for Biomolecular Screening (SBS) to allow you to use them in most automated systems. Smooth sides ensure full sample recovery. Made from USP Class VI polypropylene with high clarity to enhance sample viewing. They can be sealed with film or mats.

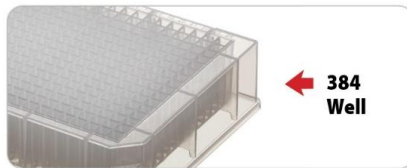
Autoclavable (122°C, 15 min) and freezable (-80°C).

DEEP WELL PLATE FEATURES

Refer to the plate description to determine which feature each deep well plate has



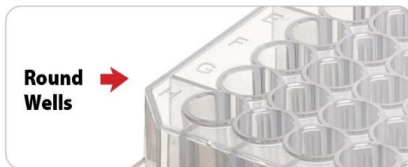
← **96 Well**



← **384 Well**



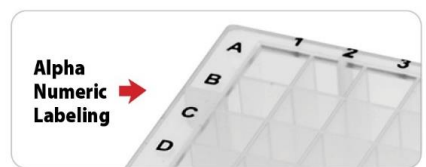
← **Notched Corner**



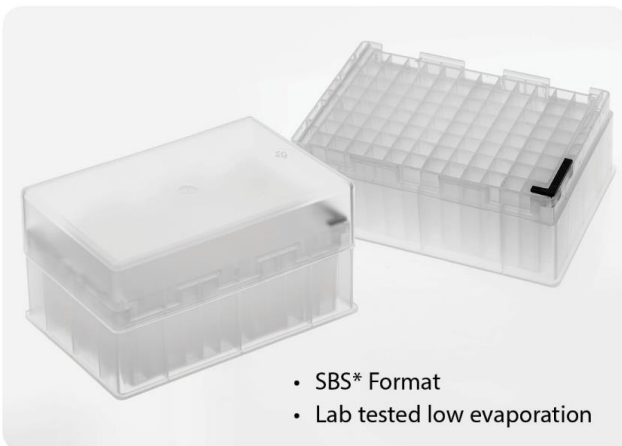
→ **Round Wells**



→ **Square Wells**



→ **Alpha Numeric Labeling**



- SBS* Format
- Lab tested low evaporation

Extra Volume 2.5mL 96-Square Well Deep Well Plate System

These square-hole plates hold a full 2.5mL** and work as storage plates or reservoirs. A black snap-in corner marker ensures proper orientation. Openings in the plate sides permit easy removal of mats or film. A clear lift off lid is available for transport or freezer storage. The clear lid fits even with a mat in place. Lid and plate made of polypropylene.

Autoclavable (122°C, 15 min)


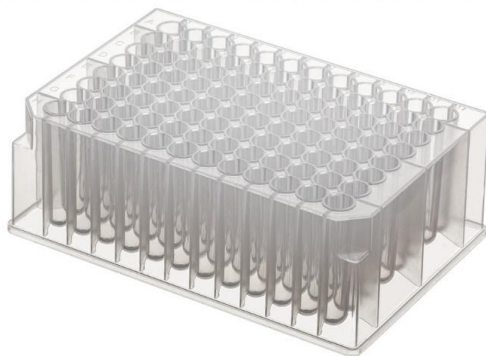


Freezable (-80°C)

* Society for Biomolecular Screening

** 2.2mL with silicone mat in place





Deep Well Plate	Description	Item #	Sterile	Packaging	Qty/Pk	Qty/Cs
	1.2 mL 96 Square Well Notched Corner Alpha Numeric Labeling V Bottom	3908-520-000-9		10 plates/pack 10 packs/case	10	100
		3908-525-000-9	✓	10 plates/pack 10 packs/case	10	100
	2.0 mL 96 Round Wells Notched Corner Alpha Numeric Labeling Round Bottom Centrifugation to 4,000 x G.	3901-520-000-9		5 plates/pack 10 packs/case	5	50
		3905-520-010-9		10 plates/pack 10 packs/case	10	100
	2.0 mL <i>For Hamilton® forensic platforms</i> 96 Square Wells V Bottom Centrifugation to 4,000 x G.	3905-525-010-9	✓	10 plates/pack 10 packs/case	10	100
		3909-520-000-9		10 plates/pack 10 packs/case	10	100
	2.2 mL 96 Square Wells Notched Corner Alpha Numeric Labeling V Bottom	3909-520-000-9		10 plates/pack 10 packs/case	10	100
		3909-525-000-9		10 plates/pack 10 packs/case	10	100

For Hamilton® Forensic Style Workstations

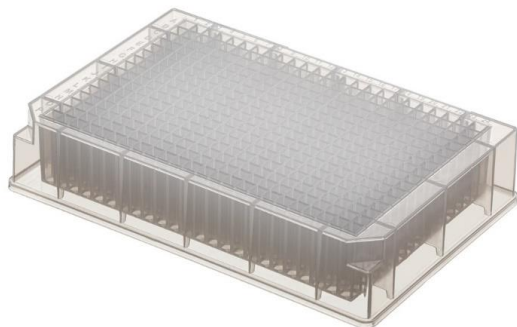
Deep Well Plate

Description

Item #

Packaging

Qty/Pk Qty/Cs



0.2 mL
 384 Square Wells
 Notched Corner
 Alpha Numeric Labeling
 V Bottom
 Centrifugation to 4,000 x G

3904-520-000-9

5 plates/pack
 10 packs/case

5

50



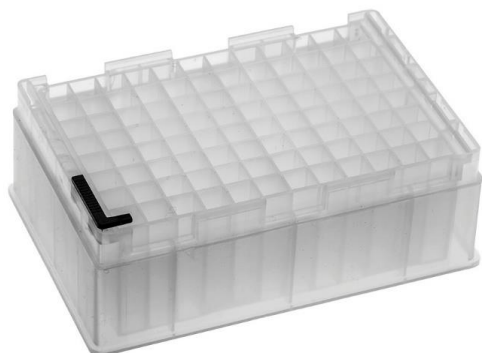
1.0 mL
 96 Round Wells
 Notched Corner
 Alpha Numeric Labeling
 Round Bottom
 Centrifugation to 4,000 x G

3903-520-000-9

5 plates/pack
 10 packs/case

5

50



2.5 mL
 96 Square Wells
 Snap-In Corner Marker

3900-520-000-9

10 plates/pack
 10 packs/case

10

100



2.5 mL
 96 Square Wells
 With Lid Included

3902-520-000-9

10 plates/pack
 10 packs/case

10

100