



AROMA SENSE  
ESCAPE INTO LUXURY

HANDHELD SHOWERHEAD  
————— MANUAL —————

# TABLE OF CONTENTS

## Contents

---

- Features and benefits.....1
- Product composition.....2
- How to install / when to replace cartridges.....3
- How to replace your cartridge.....4
- Cautions.....5
- Warranty certificate.....7

## Patents

---

U.S.A	(US6-233-758B1)
Japan	(No.3487547)
China	(No.107599)
China	(No.701281)
Russia	(No.2390303)
Australia	(No.2006267249)
India	(No.0554/KOLNP/2008)
Europe	(No.06769201.2)
	No.10-0562076
	No.10-0709731
	No.10-0849855
	No.10-1014389



# FEATURES & BENEFITS



## Aromatherapy

Natural aroma oils provides an uplifting scent to enhance relaxation and alleviate stress



## Chlorine Reduction

Neutralizes chlorine from unfiltered water



## Vitamin C

Contains vitamin C concentrate to promote healthier hair



## Water Optimization

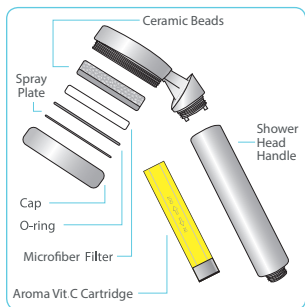
Optimizes water pressure 1.5 times greater than well branded shower heads



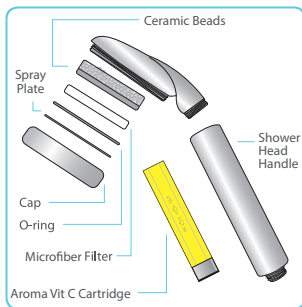
## Negative Ions

Produces up to four times of negative ions - scientifically proven to aid in breathing, increase blood flow, and alleviate stress

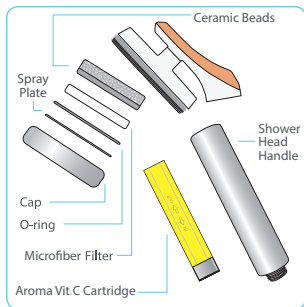
# PRODUCT COMPOSITION



AS-M-HH



AS-L-HH



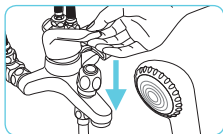
AS-PRESTIGE

**TIP**

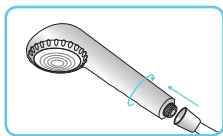
In areas where tap water contains excessive amounts of contaminants, it is best to replace the microfiber filter from the shower head or wash the microfiber filter regularly to avoid build up and/or interruption of water flow.

# INSTALLATION

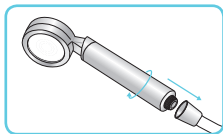
1. Turn off the faucet



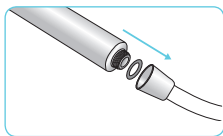
2. Separate shower head from hose by twisting counter clockwise



3. Assemble new shower head on the hose by turning it clockwise and fasten until tight



4. In case of water leakage between the shower head and the hose, fasten items after inserting the enclosed o-ring inside the hose.

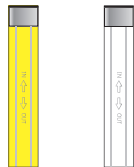


## When to Replace your Cartridge

Replace cartridge when yellow color inside cartridge turns clear (approx 30-45 days).

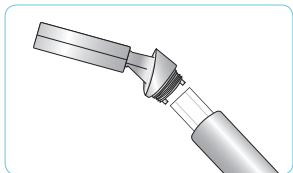
Check cartridge if you cannot smell aroma when in use.

Each cartridge lasts about 30-45 days depending on usage.



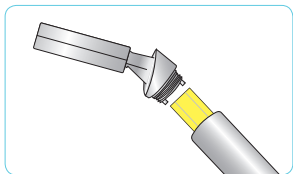
Before Using After Using

# CARTRIDGE REPLACEMENT



1.

Unwind the top handle part of the shower head by turning it to the left and remove the used cartridge.



2.

Insert a new cartridge back in place and assemble in reverse order.

# CAUTIONS

The life of the vitamin C cartridge and microfiber filter differs and depending on the usage of each individual

Be sure to comply with the instructions specified below.

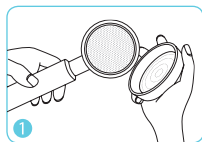
## AROMA VITAMIN C CARTRIDGE

1. Do not use water temperature of 140 F for more than 5 minutes as cartridge may be damaged  
**It is advised to adjust water temperature slowly rather than quickly**
2. Remove cartridge from shower head, seal it and keep it in a cool place when not in use for long periods of time.
3. Do not use the cartridge if damaged or broken.
4. Keep cartridge out of direct sunlight and in cool or room temperature

## MICROFIBER FILTER

Replace or frequently clean the microfiber filter as debris or foreign contaminants can cause the water stream to be scattered

### HOW TO CLEAN FILTER AND SPRAY PLATE



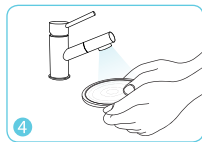
Turn cap to open.



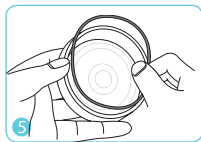
Separate spray plate from water cap.



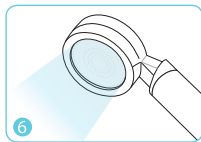
Wash Microfiber filter in running water.



Wash spray plate in running water.



Place spray plate inside cap, insert O-ring and assemble.



Check flow of water.

# CAUTIONS

- Use only tap water. The use of industrial water or heavy water may cause skin damage and dermatitis.
- Check if there is any leakage in the joint areas after installation. Insert a rubber o-ring into joint areas.
- Use only for showering and washing purposes.
- Do not leave showerhead in bathtub or basin for long periods of time.
- Do not apply excessive force when assembling showerhead. Discontinue use if the shower head has been broken.
- Stop using if skin trouble is detected. Do not use scented vitamin C cartridge if you have an allergic reaction to the fragrance.
- If you are allergic to fragrance or vitamin C, the use of cartridge may cause skin problems like hives, itching, rashes, eczema, etc.
- Do not use benzene or paint thinner when cleaning the product.
- Company is not liable for any damages resulting from the use of Aroma Sense shower heads or Vitamin C Cartridges.

This product is designed for showering purposes only. Do not use for any other purpose other than specified or designated in the instruction manual.

## SPECIFICATIONS

Product Name	Aroma Sense
Model No.	AS-M-HH / AS-L-HH / AS-PRESTIGE
Material	ABS & Chrome + Stainless Steel
Origin	Made in Korea
Temperature for Use	Maximum : 176 F / Minimum : 59 F
Company	Opus International LLC

\* The product specification is subject to change for product improvement without prior notice.



# WARRANTY

We warrant to replace the defective product, if requested, within 30 days from the date of the original purchase and to repair the defective product for free within a 1 year period from the date of the original purchase. Customer must show receipt. (The transportation cost to and from our service center will be paid by the customer)

Product Name	Aroma Sense	Warranty Period
Model No.		Within one year from the date of the original purchase
Date of Purchase		
Place of Purchase		
Customer Name		
Address		
Telephone		

Replacement or warranty repair of the defective product will be void in the following cases.

- Defects or damages caused by an external impact or drop.
- Defects caused by failure to comply with the instructions specified in the instruction manual
- If filter was soaked by water after opening the box