

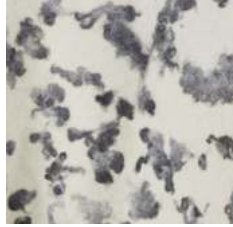
Painterly Felted Wool Fabrics

Milled, designed and sewn at our workshop in West Sonoma County, California
where we "paint" with local and heritage breed wool.

Coup d'Etat EXCLUSIVE Fabrics:



Gotland Indigo



Gotland Grey



Gotland Turmeric



Wordsworth's Woods

NEW Spring/Summer 2023 Collection



Shetland Brown



Wensleydale Brown



Botanical Indigo



Loganberry Red



Shetland Cloud



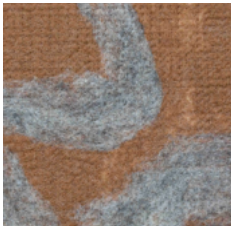
Shetland Marble



Cream



Grey Ribbon



Redwood



Tahoe with Cream



Tahoe with Black



Milky Way



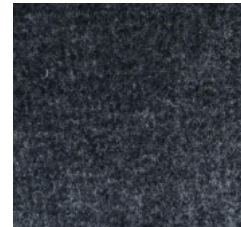
Abstract B&W



Genesis



Painterly Black & Red



Charcoal



Painterly Felted Wool Fabrics

Lead Time: Our standard lead time is 6-8 weeks from deposit.

We can rush the order, for a fee of 20% of the total price, to complete the order in 3-5 weeks.

Minimum Order: 3 yards

Custom Orders: We can provide a 16x24" CFA for prototyping and custom color matching. This size CFA helps to visualize the pattern at scale of the fabric yardage. We source the wool and create a custom fabric. When CFA is approved, there is an additional charge per yard for custom fabrics.

Samples: Please contact Emma@jgswitzer.com for samples, fabric, and custom inquiries. Samples can be provided at no charge to our Trade Account members.

Fabric Treatment: We recommend Decorator's Laminate, in Los Angeles, CA.
<https://www.deco-lam.com>

1. Fabric Laminate - We recommend a SINGLE backing of acrylic (NOT KNIT) for wall coverings. Laminate can also be used for added strength in upholstery projects, but it is not necessary for lighter traffic pieces.
2. Stainguard Teflon - coating on face, to prevent stains on lighter colored fabric.

Care Guide: For any wool product, keeping everything clean is essential to avoid any lasting damage. Many stains can be removed by spot-cleaning, simply rinse the stain with cold water and gently dab. Avoid rubbing, especially for felted wool products. Use gentle and mild soap for all methods of cleaning. We recommend Eucalan or Woolly Wash by Mitchell's, or Grandma's Spot Cleaner. To dry- do not use heat or wring out wool items. Instead, lay them flat on a clean towel to dry.

CALIFORNIA

Coup d'Etat Showroom
111 Rhode Island St, Suite 1
San Francisco CA 94103

Benjamin Hassler
benjamin@coupdetatsf.com
415.241.9300

100 N Robertson Blvd
Los Angeles CA 90048
415.241.9300

Anthony Paulino
anthony@coupdetatsf.com
www.coupdetatsf.com

TEXAS/OK/LA

Canvas Showroom
1008 W 9th St,
Austin TX 78703

Mona Mostofi
mona@canvas-showroom.com
512.960.4152

Melissa Hodges - Dallas
melissa@canvas-showroom.com
281.770.3189

sales@canvas-showroom.com
www.canvas-showroom.com