

Data Sheet

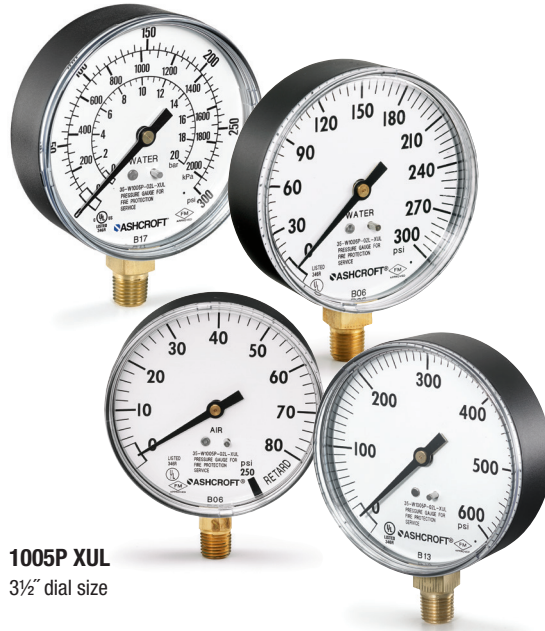
1005P XUL Fire Protection Sprinkler Service Gauge

FEATURES

- PowerFlex™ movement provides superior resistance to shock, vibration and pulsation
- TrueZero™ reduces reading errors by using a “zero box” instead of convectional dial pins
- Water or Air gauges available for wet/dry
- Heat-resistant polycarbonate push-in window
- Custom dials available

TYPICAL USES

- Fire Sprinklers for water or air systems



1005P XUL
3½" dial size



SPECIFICATIONS

Accuracy:	±3-2-3% of span (ASME B40.100 Grade B)
Sizes:	3½"
Ranges:	Single, dual or triple scale 0-300 psi (water) 0-80 psi retard to 250 psi (air) 0-600 psi
Process Connection Location:	Lower
Process Connection Size:	¼ NPT
Dial:	Black figures on white background
Pointer:	Black, aluminum
Weather Protection:	Weather resistant
Movement:	PowerFlex™ with Brass/polyester segment
Approvals:	UL 393 listed for fire protection sprinkler service UL Canada listed FM approved

WETTED COMPONENTS

Bourdon Tube	Process Connection
Bronze	Brass

NON-WETTED COMPONENTS

Case	Window
ABS (Polycarbonate blend)	Polycarbonate

KEY BENEFITS

- Single scale, dual scale and triple scale dials available (bar, kPa, psi)
- Corrosion resistant ABS case
- Custom Dials available

MIN/MAX TEMPERATURE LIMITS

Version	Ambient	Process	Storage
1005P XUL	-40°F to 150°F (-40°C to 65°C)	-40°F to 150°F (-40°C to 65°C)	-40°F to 150°F (-40°C to 65°C)

Data Sheet

1005P XUL Fire Protection Sprinkler Service Gauge

ORDERING CODE	Example:	35	W	1005	P	H	02	L	XULZO	100#
Dial Size										
35 - 3½"		35								
Movement type										
W - PowerFlex™			W							
Model										
1005				1005						
Case/Window Material										
P - ABS/Polycarbonate					P					
Process Connection Material										
H - Brass						H				
Process Connection Size										
02 - ¼ NPT							02			
Process Connection Location										
L - Lower								L		
Options (If choosing an option(s) must include an "X")										X__
UL - (required - UL393 listed and FM approved)										UL
ZO - Bulk pack										ZO
ZP - Customer part number on carton/plain white label										
ZQ - Customer part number printed directly on carton										
Ranges										
Single Scale										100#
100# - 0/80 psi retard to 250 psi outer scale										
300# - 0/300 psi outer scale										
600# - 0/600 psi outer scale										
Dual Scale (psi/kPa)										
100#-AGN - 0/80 psi retard to 250 psi outer scale; 0/550 kPa retard to 1750 kPa inner scale										
300#-AGS - 0/300 psi outer scale; 0/2000 kPa inner scale										
600#-AGV - 0/600 psi outer scale; 0/4000 kPa inner scale										
Triple Scale (psi/kPa/bar)										
100#-CAA - 0/80 psi retard to 250 psi outer scale; 0/550 kPa retard to 1750 kPa middle scale; 0/5.5 bar retard to 17.5 bar inner scale										
300#-CAB - 0/300 psi outer scale; 0/2000 kPa middle scale; 0/20 bar inner scale										
600#-CAC - 0/600 psi outer scale; 0/4000 kPa middle scale; 0/40 bar inner scale										

Data Sheet

1005P XUL Fire Protection Sprinkler Service Gauge

DIMENSIONS in [] are millimeters

For reference only, consult Ashcroft for specific dimensional drawings

Lower Connection							
Dial Size inches	A	B	C	D	E	G	Weight
3 1/2"	3.70 [94]	1.14 [29]	2.72 [69]	3.61 [92]	0.47 [11.0]	0.56 [14.2]	5.36 oz 0.152 kg

