

iCMS

Central Management Software

User Manual



Contents

1.	iCMS Installation	3
1-1.	System Requirements	3
1-2.	Bandwidth Requirements	3
1-3.	Installation	4
2.	Start to iCMS	6
2-1.	iCMS Introduction	6
2-2.	Add Device and Live View	8
2-3.	Add Group	10
2-4.	Live View	13
2-5.	Remote Playback.....	15
2-6.	Event Playback	16
2-7.	PTZ Control.....	18
2-8.	Removing the iCMS SW from PC.....	19

1. iCMS Installation

1-1. System Requirements

- CPU: Intel Pentium 4 processor or higher.
- OS: Microsoft Windows 7, or Windows 8 or above
- RAM: 2GB required for the iCMS, besides OS and other required APs.
- HDD space: 1GB HDD for program and extra space for recorded video and image.
- VGA card support: Direct X9 is mandatory.

1-2. Bandwidth Requirements

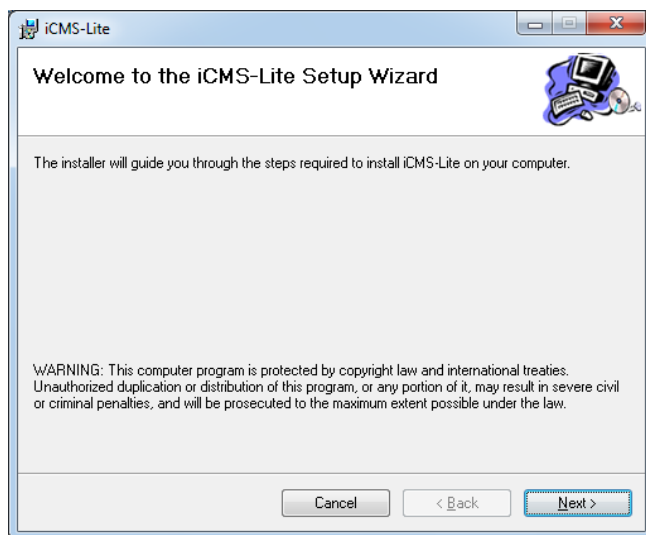
Stream	Bandwidth Table		Bandwidth (Unit bps)					
	Resolution	Bit Rate	1CH	4CH	9CH	16CH	25CH	36CH
Main Stream	1080p (1920x1080 30fps)	8Mbps	8M	32M	72M	128M	200M	288M
	720p (1280x720 30fps)	4Mbps	4M	16M	36M	64M	100M	144M
	960H	2.5Mbps	2.5M	10M	22.5M	40M	62.5M	90M
Sub Stream	nHD (640x360 30fps)	1.5Mbps	1.5M	6M	13.5M	24M	37.5M	54M
	CIF	0.75Mbps	0.75M	3M	6.75M	12M	18.75M	27M

1-3. Installation

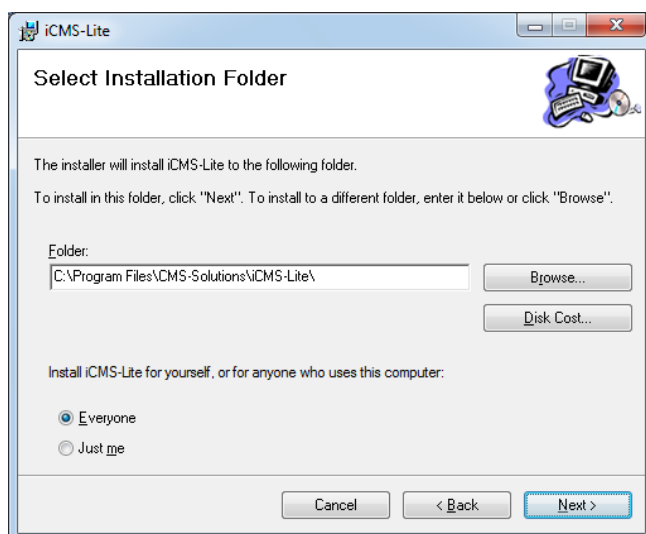
The software must be installed on your computer before you are able to use it. Typically, you copy the executive file from the CD that is carried with device, and then install the file on your computer. Verify that your computer meets the iCMS software system requirements.

Step1. click the iCMS installation icon

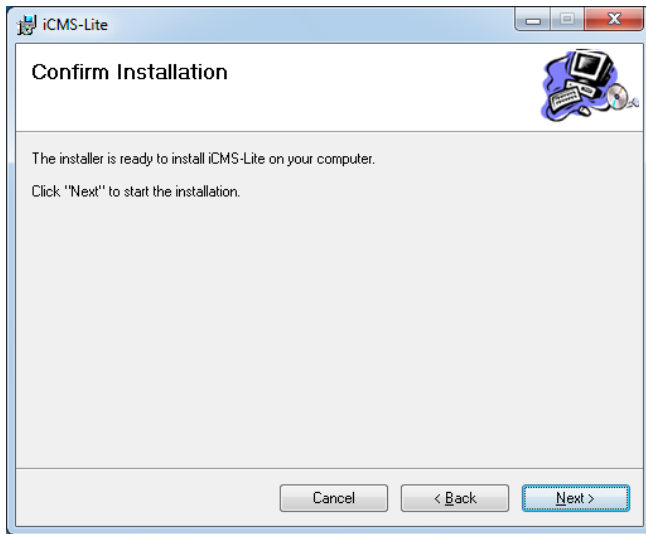
Step2. When the installation wizard starts, click 'Next' to continue the installation and follow the steps in the installation wizard



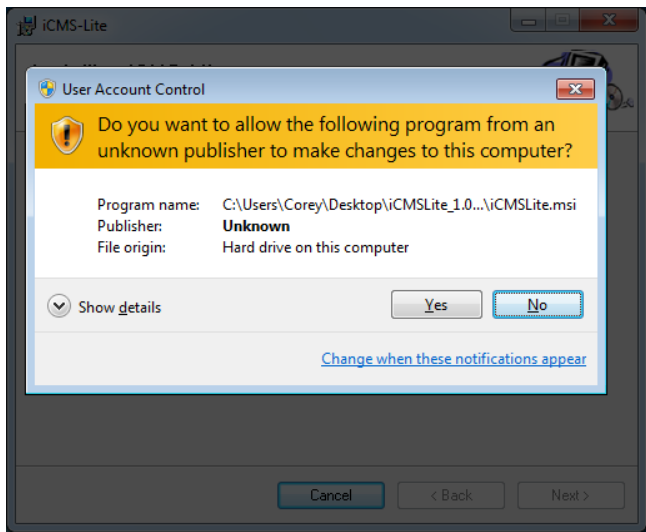
Step3. The wizard will suggest an installation path. Normally, you can simply go ahead and use the suggested installation path



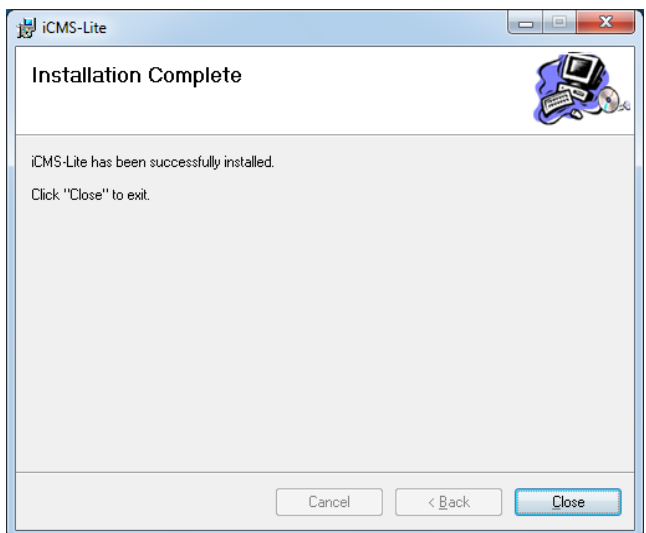
Step4. Click 'Next' buttons and waiting progress of installation.



Step5. Click Yes to continue.



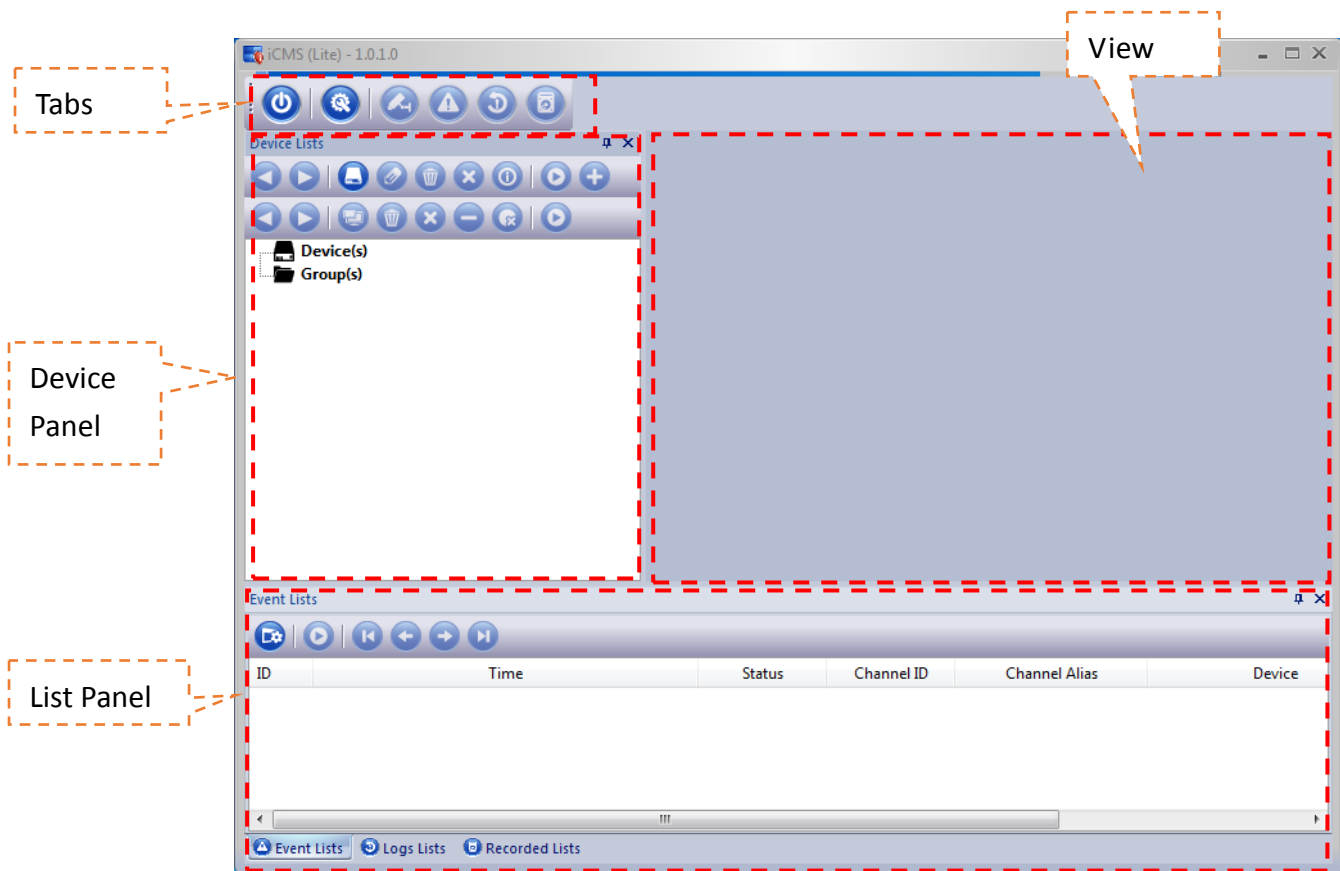
Step6. Click close to complete.



2. Start to iCMS

2-1. iCMS Introduction

When start iCMS software the main screen as below:



View







The way in which video from your surveillance system's cameras is displayed in the iCMS SW is called a view. A single view may contain video from up to 32 cameras. Each view's layout can be customized to fit its contents.

The SW also supports multiple windows and screens, allowing you to watch multiple views at a time on multi monitors.

Tabs

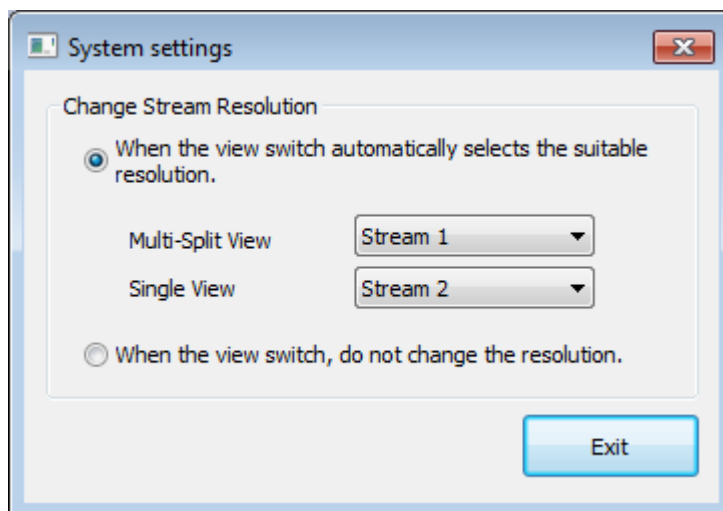
Tabs to select or hide main panel. The SW has six bottom



Icon	Function	Description
	Exit	Exit the iCMS
	System Settings	Open the systems panel
	Device list	Display device list panel
	Event list	Display event list panel
	Log list	Display log list panel
	Record list	Display record list panel

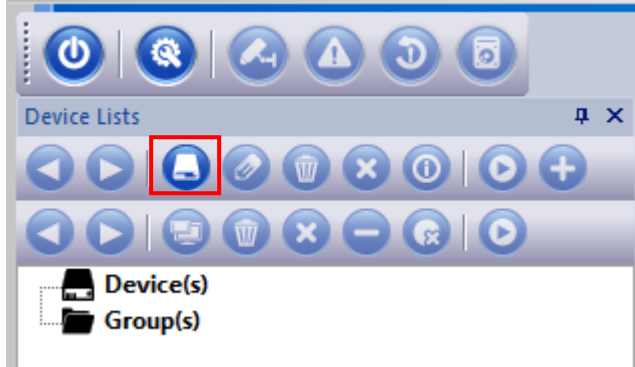
System Settings panel

Setting main when the view switch single view or multi-split view

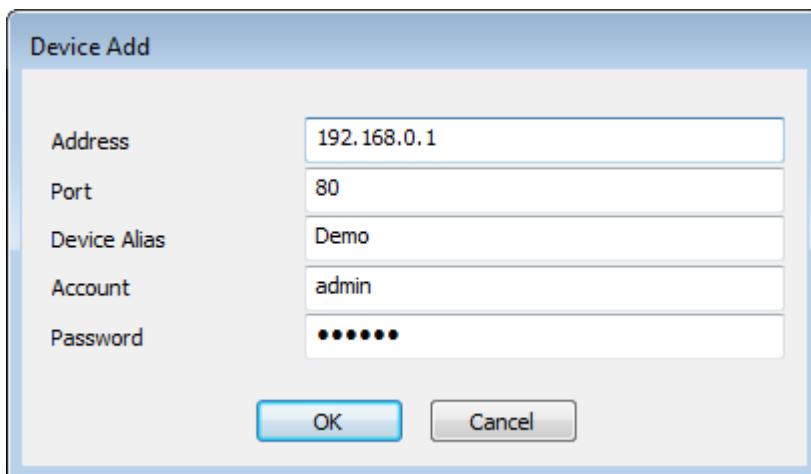
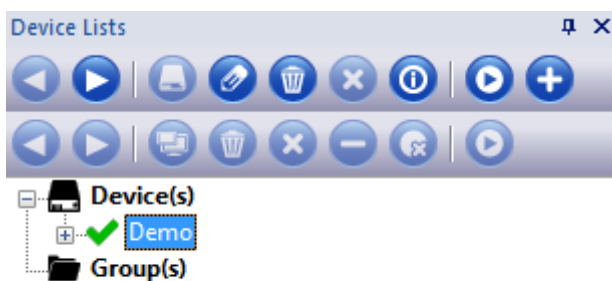


2-2. Add Device and Live View

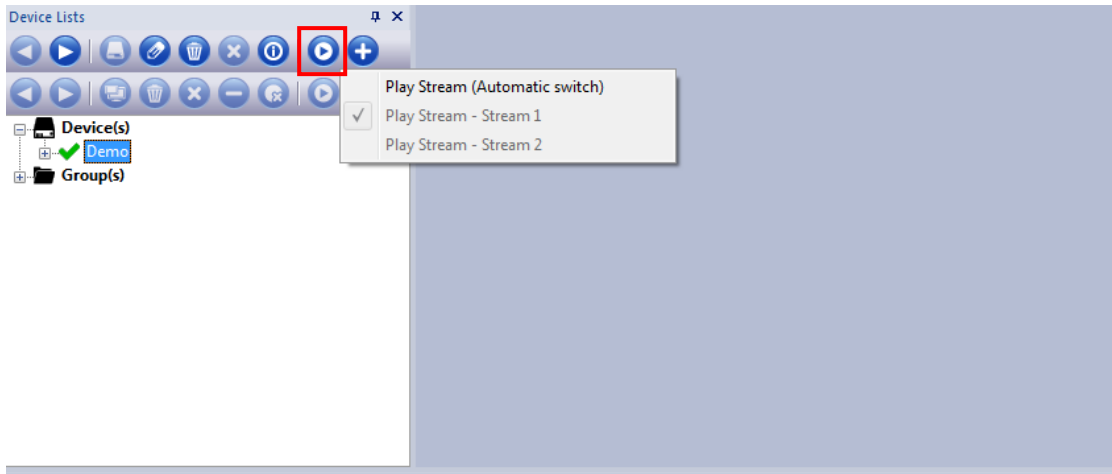
Step1. Select add device icon to add new device



Step2. Enter the following information in sequence. After the input is complete, click "OK" to close the window. Press "Cancel" to close window.

A screenshot of a "Device Add" dialog box. It contains five input fields: "Address" with the value "192.168.0.1", "Port" with the value "80", "Device Alias" with the value "Demo", "Account" with the value "admin", and "Password" with six dots. At the bottom, there are "OK" and "Cancel" buttons.

Step3. Click Play Stream bottom to view device live video.

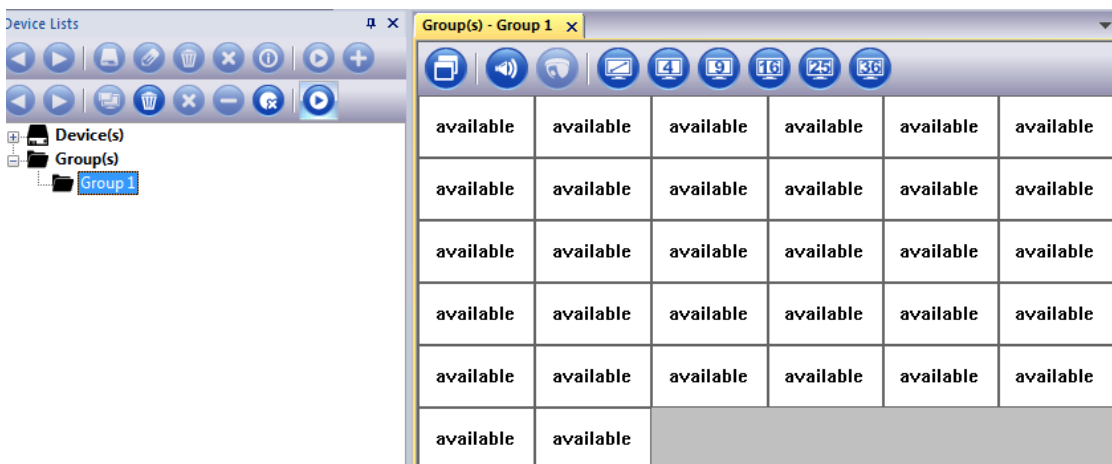
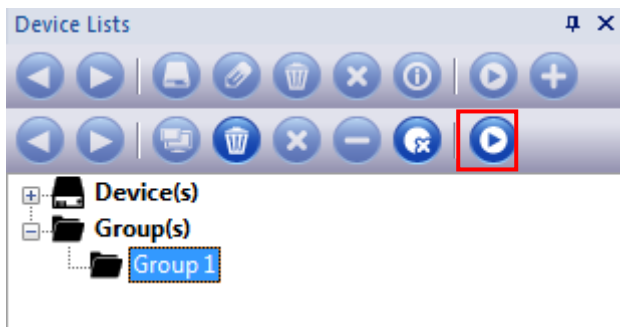


2-3. Add Group

Step1. Select create group icon to add new group

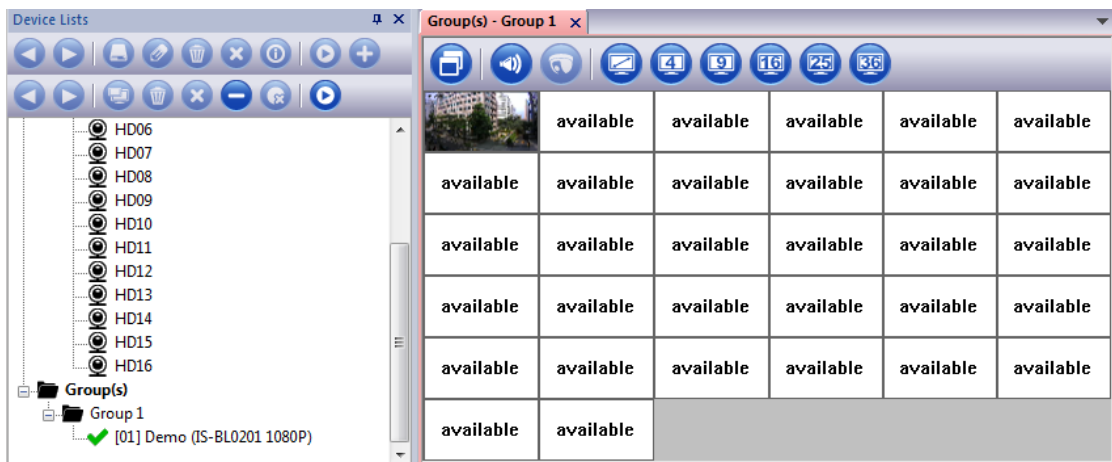
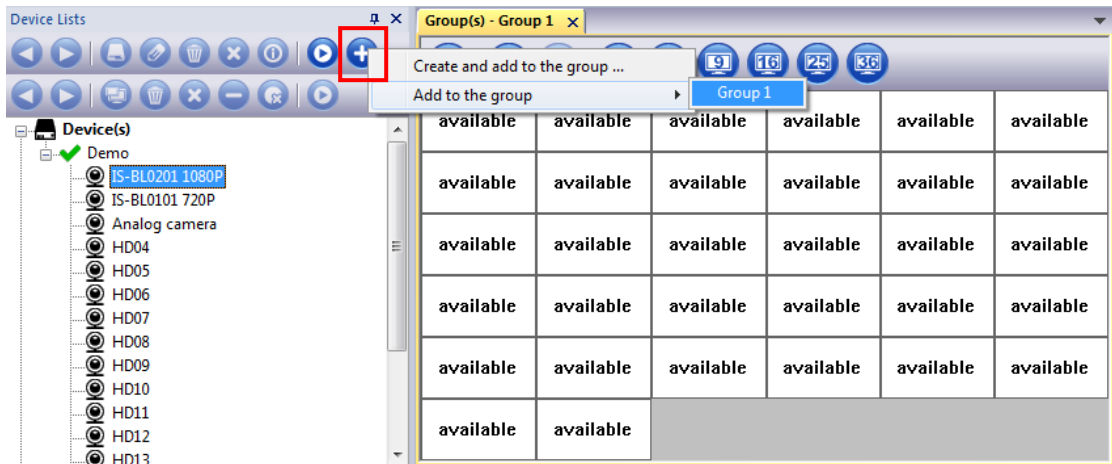


Step2. Select open stream view icon to vieww group

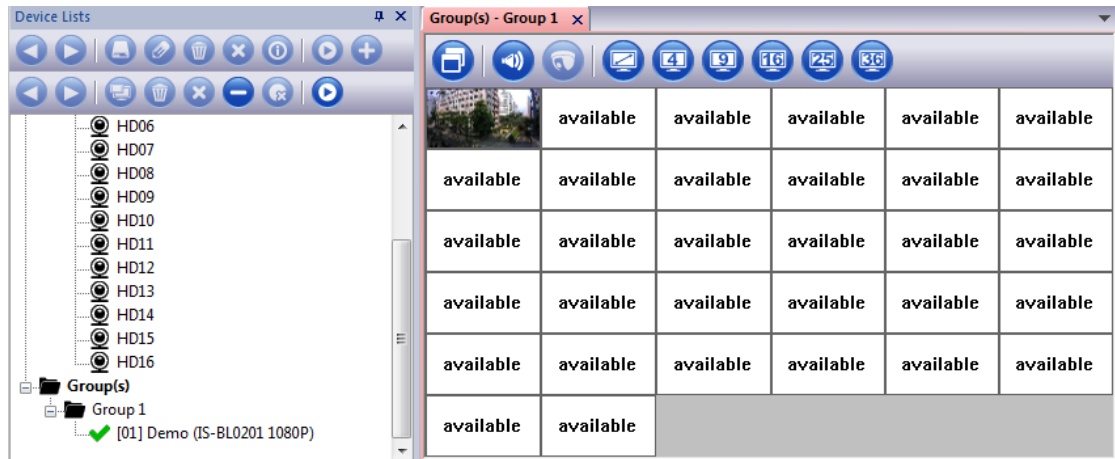
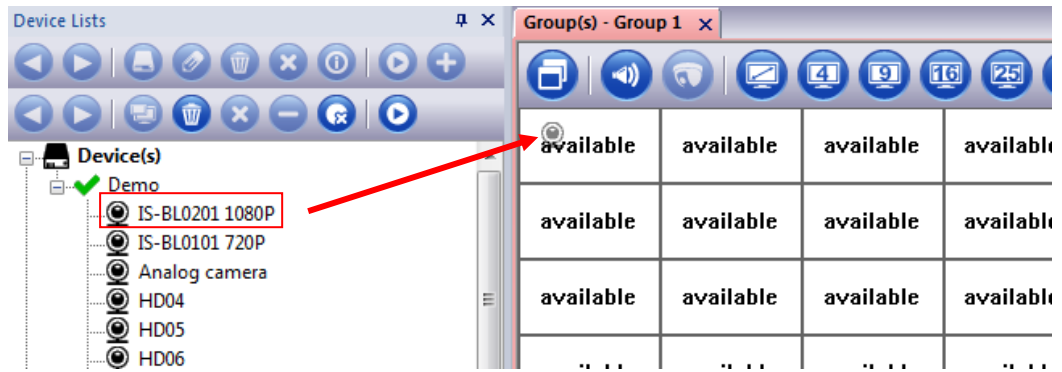


Step3. This iCMS has two methods to add device to group.

Method 1. Select group operation icon to add camera device to group.











Method 2. Drop camera form device list to group.



2-4. Live View

The iCMS also supports multiple windows and screens, allowing you to watch multiple views at a time on multi monitors. When you select the iCMS live tab, the SW will connect to the surveillance system server, and display live video from the cameras in the selected view.

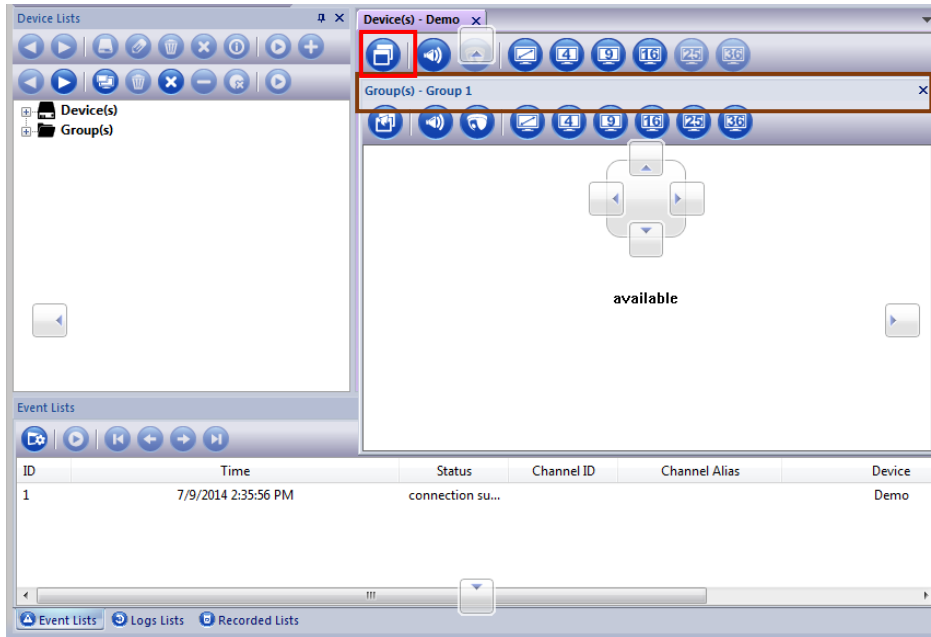


Icon	Function	Description
	Pop-up window	Presents a floating pop-up windows.
	Play / Stop sound	Play / Stop sound of a channel.
	PTZ control.	Control PTZ of a channel.
	Single window	Display video of a channel.
	Quad window	Display video of 4 channels.
	9 split window	Display video of 9 channels.
	16 split window	Display video of 16 channels.
	25 split window	Display video of 25 channels.

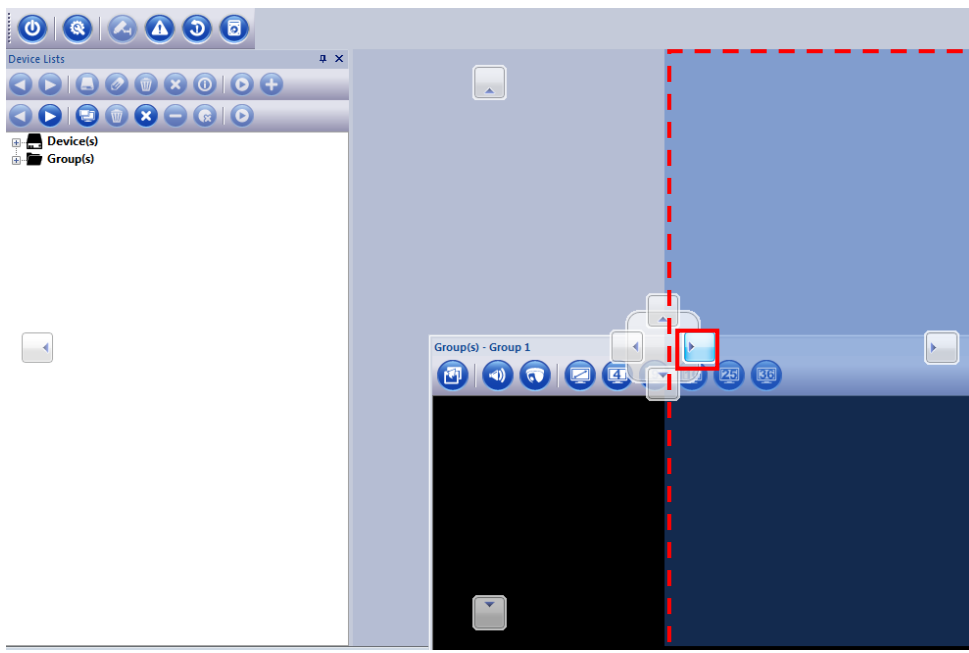
	36 split window	Display video of 36 channels.
---	-----------------	-------------------------------

Floating Matrix

Press Pop-up window bottom and drop window title you can move window to other area.



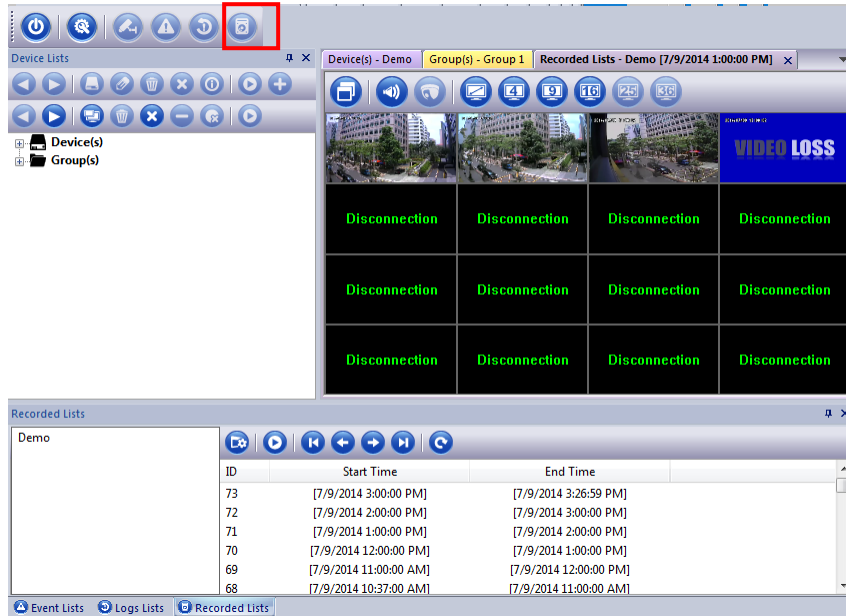
When you move pop-up window to align bottom, the screen will show align area.



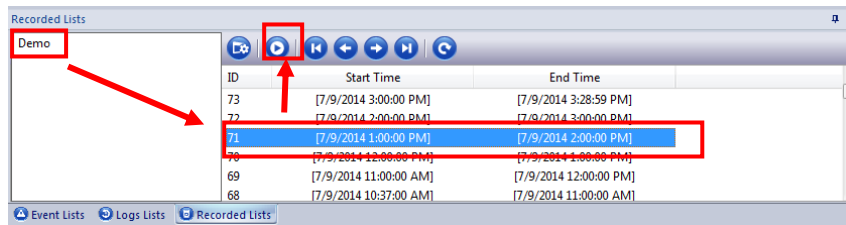
2-5. Remote Playback







View recorded video on the iCMS.


Step1. Click record list bottom



Step2. Select device and record ID then play stream



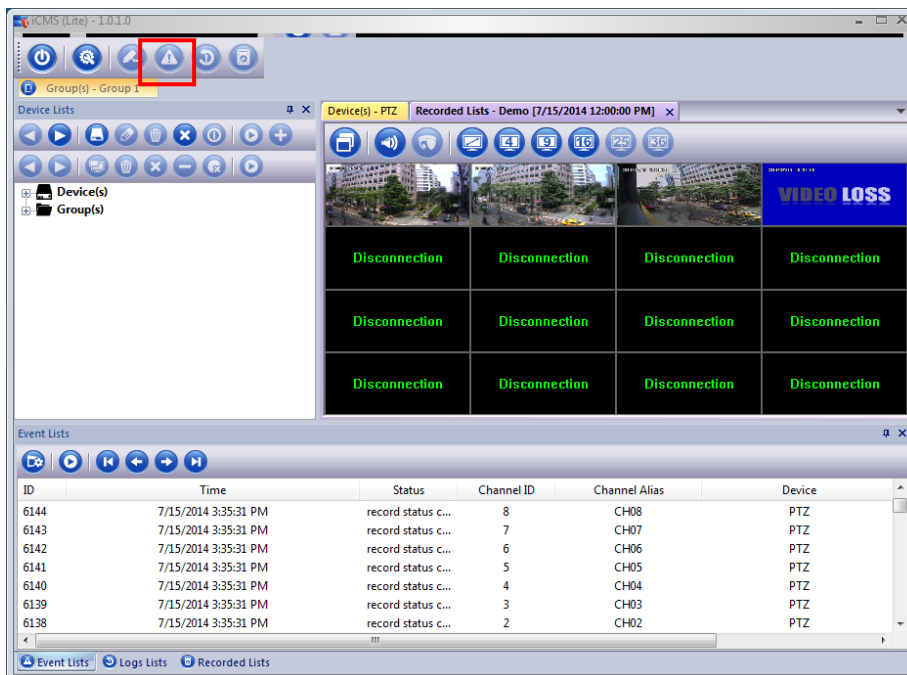
Icon	Function	Description
	Restore original layout	To restore control of the original field layout.
	Play video stream	Play the select video stream.
	Move to first	Move the focus frame to the first record.
	Move to previous	Move the focus frame to the previous record.
	Move to next	Move the focus frame to the next record.
	Move to last	Move the focus frame to the last record.

	Refresh	Refresh all record.
---	---------	---------------------

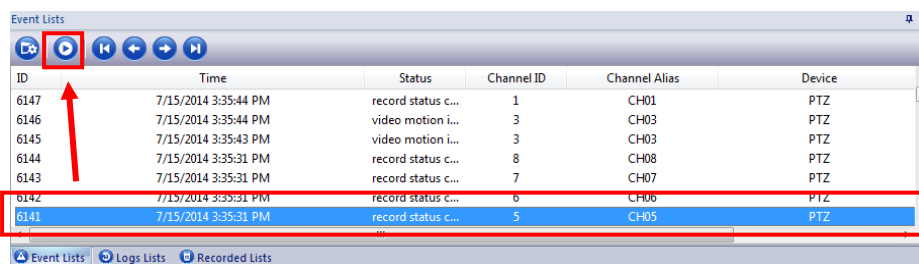
2-6. Event Playback


When start the iCMS software, the iCMS will record system event in the iCMS. User can playback event record.






Step1. Click event list bottom



Step2. Select event ID then play stream



Icon	Function	Description
	Restore original layout	To restore control of the original field layout.

	Play video stream	Play the select video stream.
	Move to first	Move the focus frame to the first record.
	Move to previous	Move the focus frame to the previous record.
	Move to next	Move the focus frame to the next record.
	Move to last	Move the focus frame to the last record.

2-7. PTZ Control

if your views contain PTZ (Pan/Tilt/Zoom) cameras, you can control the PTZ cameras with the Live tab's PTZ Control.



PTZ Navigation Buttons

Use the navigation buttons in the PTZ Control pane to move the selected PTZ camera.

The **Arrow buttons** let you move the position of camera view.

The item of '**ZOOM**', '**FOCUS**' and '**IRIS**' let user can control the item manually.

POSITION STEP is a distance during Pan/ Tilt works.

PTZ Preset Positions

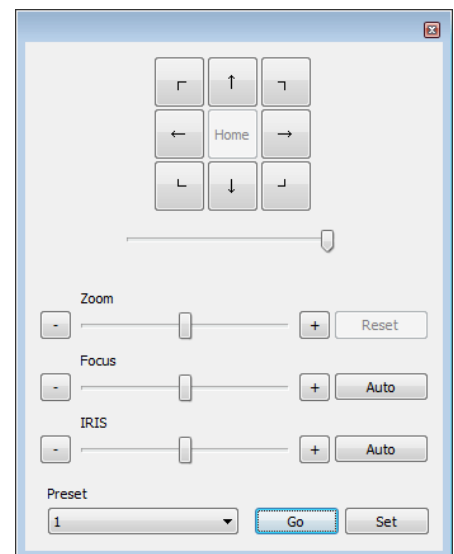
You can set the preset of PTZ camera from PTZ control panel.

If preset positions have been defined for the selected PTZ camera already, you are able to select such positions.

To set preset.

1. Move the PTZ view point by navigator arrow.
2. Select any number for preset numbering.
3. Press [SET] button to save the position.

To run preset.



1. Select one of preset number on the list.
2. Press [Goto] button, PTZ camera view will move to predefined position.

2-8. Removing the iCMS software from PC.

To remove the Smart Client, do the following:

1. In Windows' start menu, select All SW, and select Uninstall in iCMS folder. This will open the uninstall Programs window.
2. In the uninstall Programs window, select uninstall button.