

# 8CH DVR

## Quick Start Guide



- 1. Packing.....P.1**
- 2. Hard Disk Installation.....P.3**
- 3. DVD-RW Installation.....P.4**
- 4. Front Panel Controls.....P.8**
- 5. Rear Panel Connectors.....P.9**

# 1 PACKING

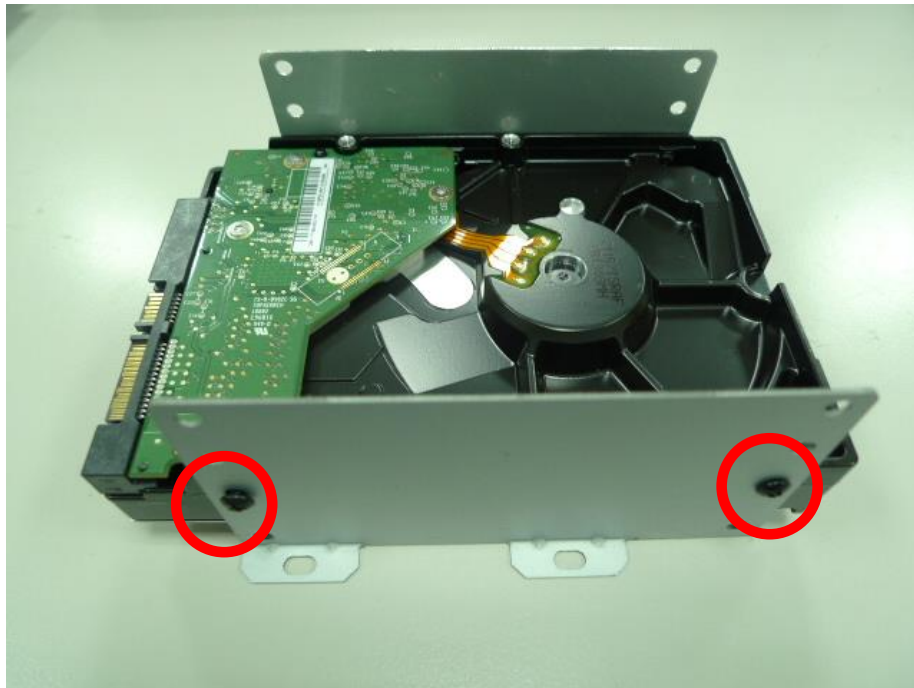
1. DVR
2. Quick Start
3. IR Remote Control \*Pressed "DVR1" Button before use
4. Battery
5. CD
6. Hard Disk Mount
7. Screws
8. Power Cord
9. SATA Cord

Note: Standard shipping products do not include HDD

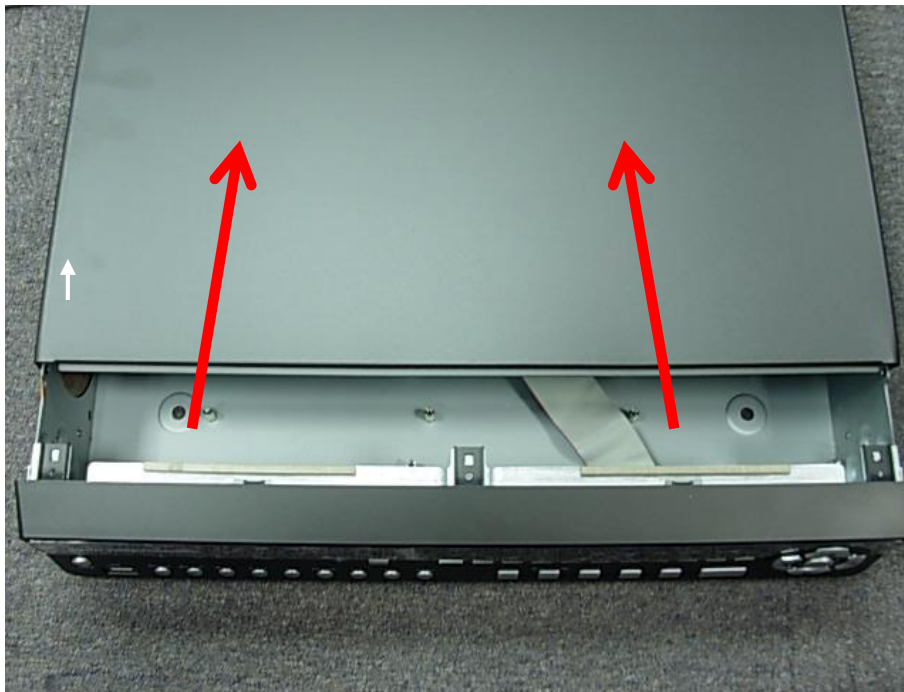
# 2

## HARD DISK INSTALATION

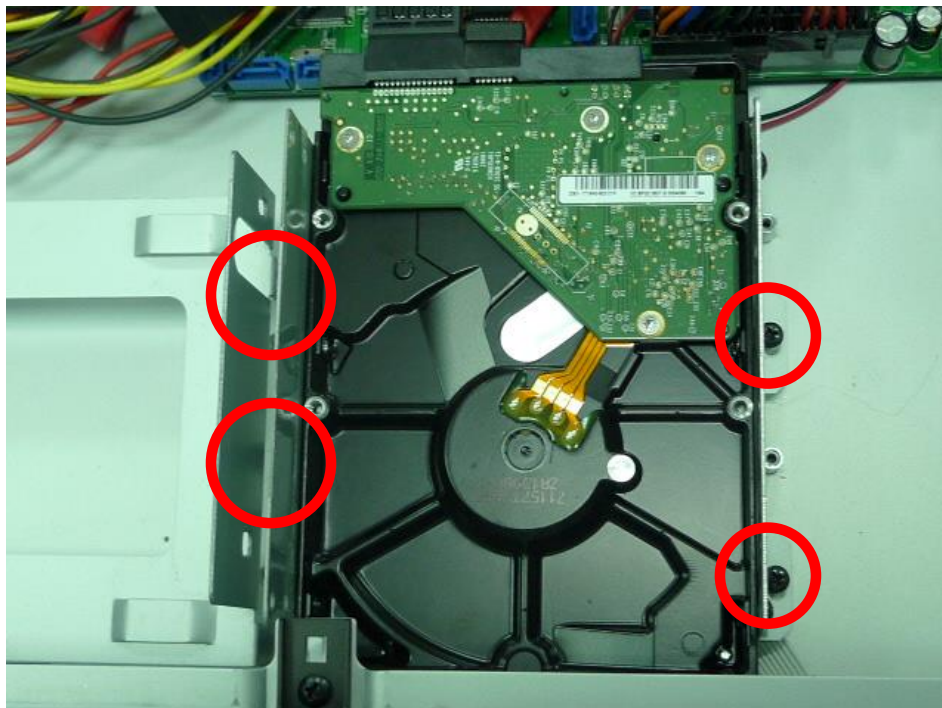
Step 1) Fix the HDD to rack mount with the screws as indicated.



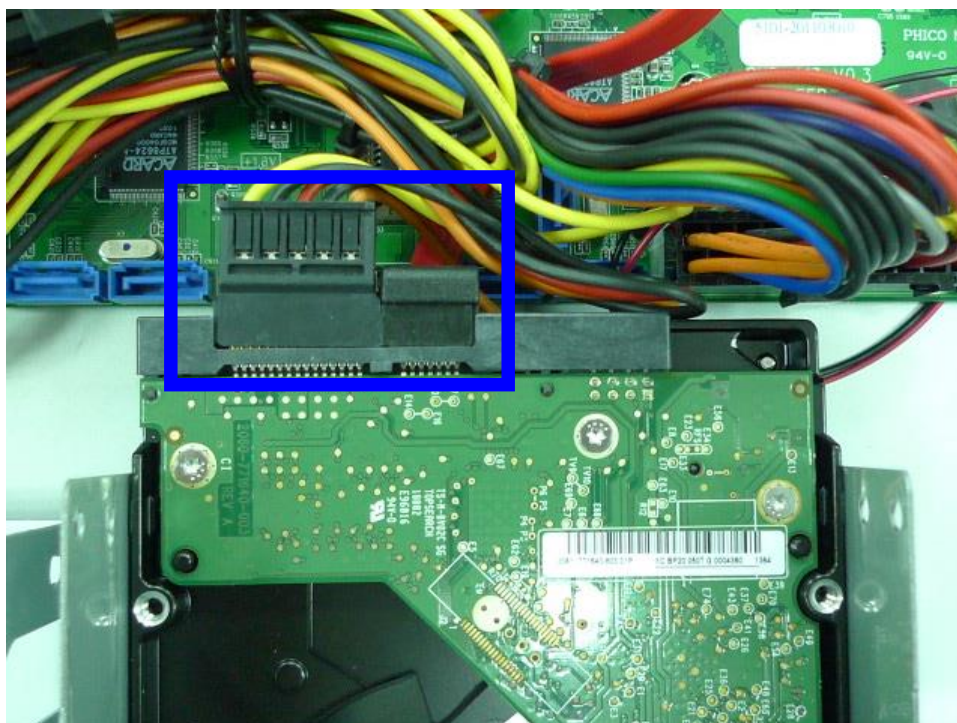
Step 2) Remove all screws and remove the machine cover in accordance with the direction of the arrow.



**Step 3) Place the HDD on the HDD plate and screw it as indicated.**



**Step 4) Connect the power and the SATA cables as indicated.**



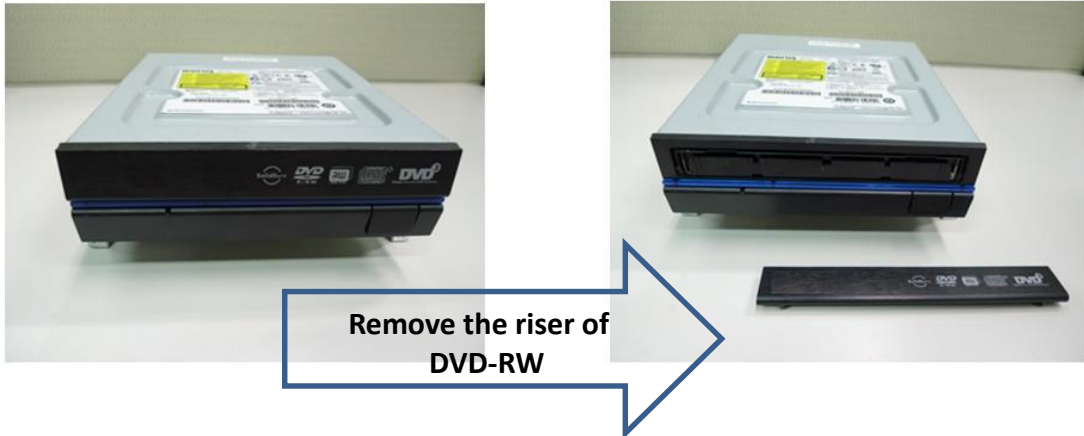
**Note:** After installation, please initialize Hard Disk before starting to record. For more detailed information, please check out User Manual "Storage Setup" for reference.

# 3 DVD-RW INSTALATION

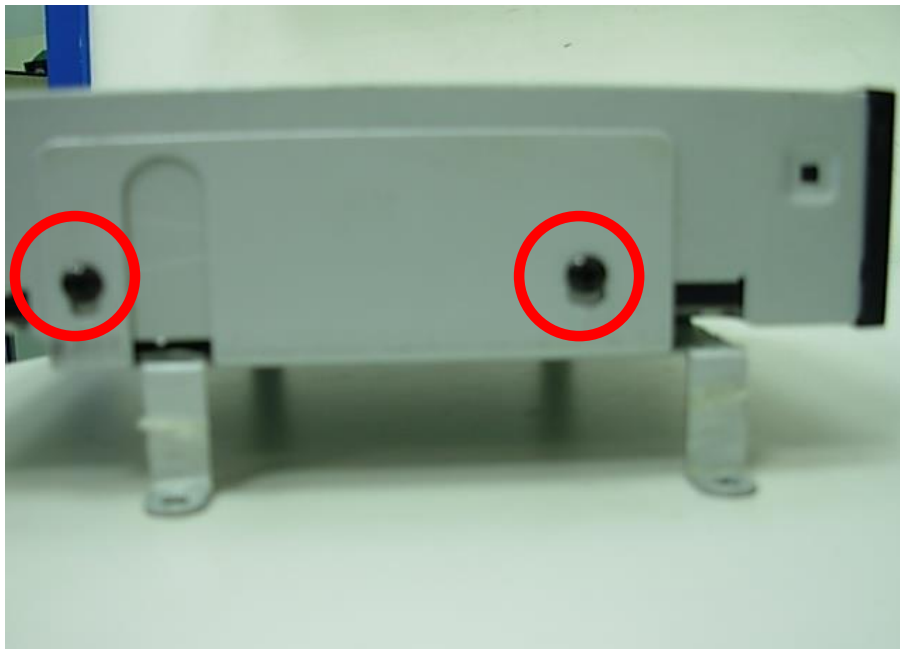
## DVD-RW Installation

*(Standard shipping products do not include HDD and DVD-RW)*

Step 1) Remove the riser of DVR-RW.

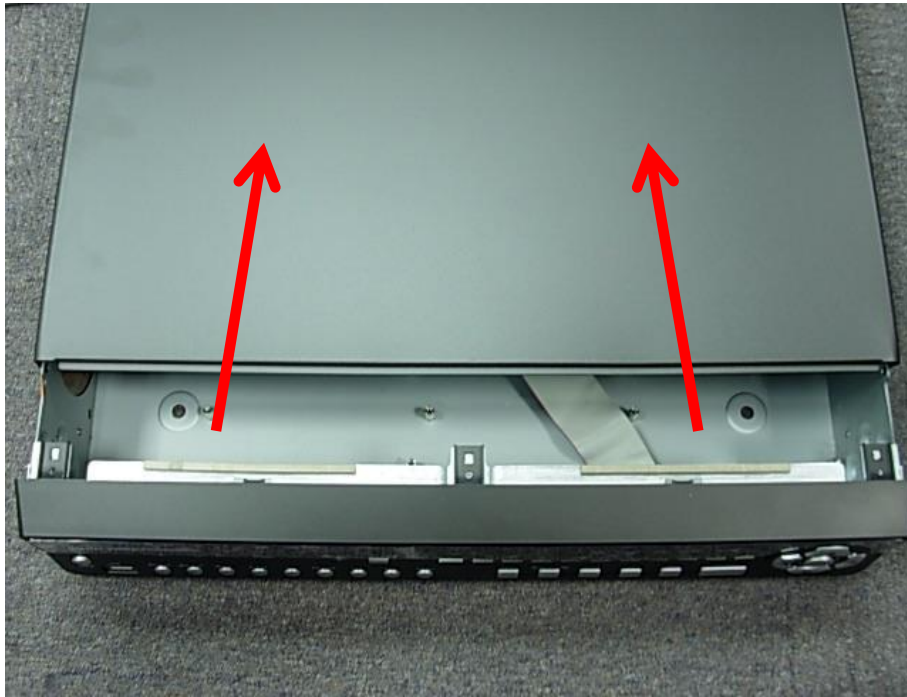


Step 2) Fix the DVD-RW to rack mount with the screws as indicated

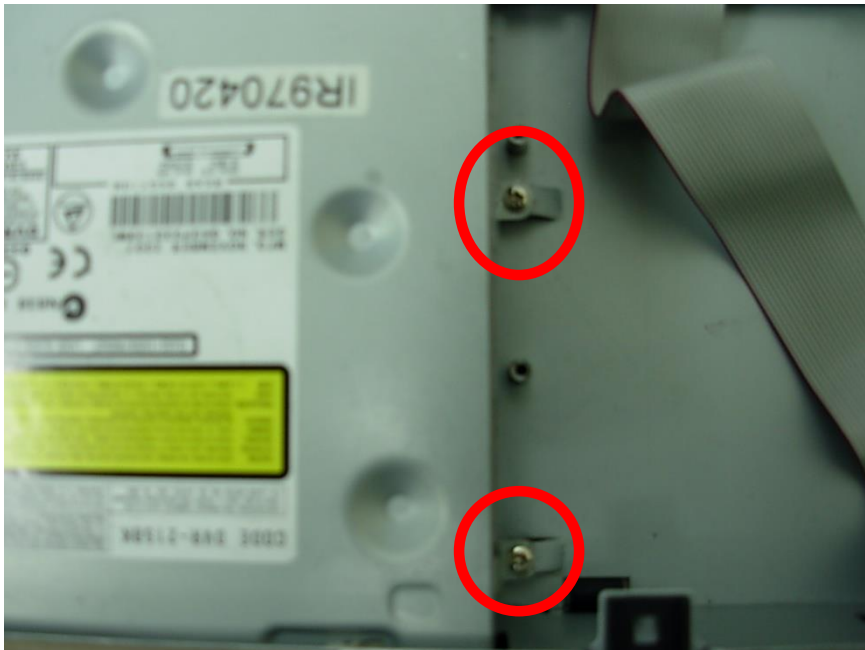




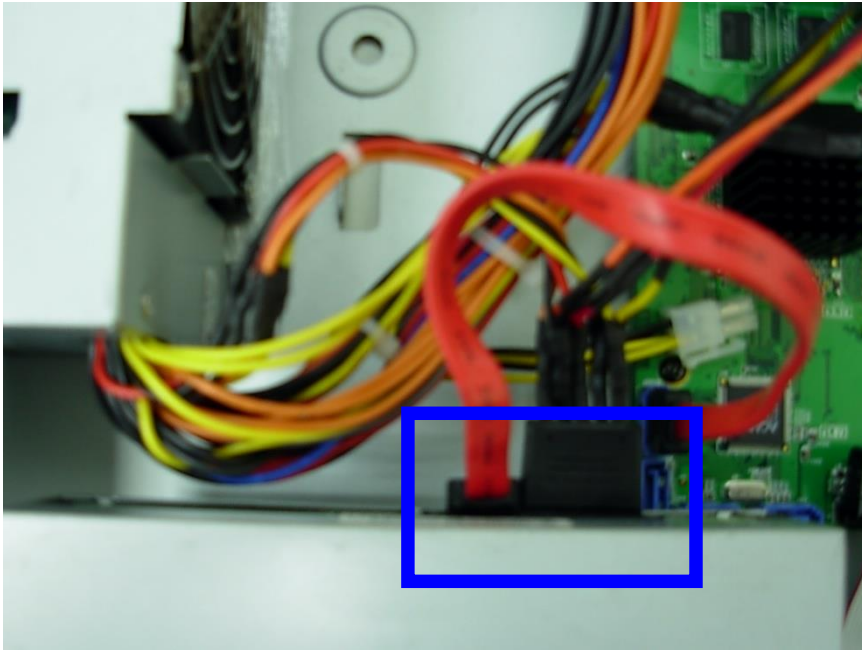
**Step 3) Remove all screws and remove the machine cover in accordance with the direction of the arrow.**



**Step 4) Fix the DVD-RW rack mount with the screws into to housing as indicated**



**Step 5) Connect the power and the SATA cables as indicated.**



# 4

## FRONT PANEL CONTROLS



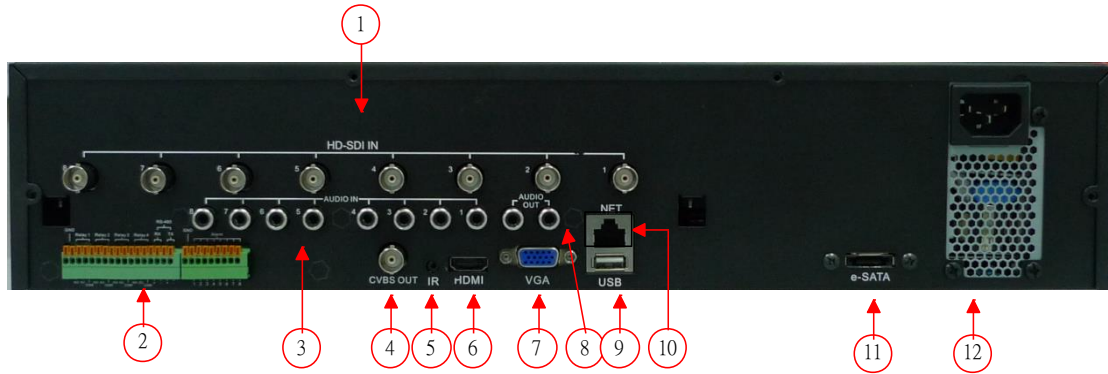
1. USB 2.0	USB port
2. LED Display (From left to right)	HDD : Hard disk drive Power : Power is on LAN : Network connected LOGIN : User login REC : Recording PLAY : DVR play video
3. LOCK	On / Off Key Lock in live mode.
4. Playback Keys	REW: In PLAYBACK mode, press to play rewind PLAY / PAUSE: In PLAYBACK mode, pause / resume playback STOP: In PLAYBACK mode, stop playback FF : In PLAYBACK mode, press to play forwards
5. Arrow keys	In SETUP mode, move the cursor up / down, reduce / increase the value of key. °
6. Number 0~9 、 10+	Select the full screen channel in live mode. Select the full screen channel in playback.
7. IR Sensor	Input sensor for the remote control
8. DVD Writer	Optional DVD-RW backup device. (Option)
9. Function Keys	STATUS: In live mode, enter the System Information menu BACKUP: In LIVE mode, press to display the BACKUP menu. MUTE : In LIVE mode, enable/ disable live audio ZOOM: In LIVE mode, enlarge the display of a channel. PIP : No function FREEZE: In LIVE mode, display can be FREEZE. PTZ : Display PTZ Menu. ESC : In SETUP mode, Exit / Return to previous setup menu MENU: In LIVE mode, press to display menu.



# 5

## REAR PANEL CONNECTORS

Rear Panel



● SDI IN	SDI input port for HD camera, 8 in total.
● EXTERNAL I/O	External I/O port, left and right are two groups, see the following table function
● AUDIO IN	For 8-way audio
● CVBS OUT	BNC output port for second monitor
● IR	IR extension cable jack.
● HDMI	HDMI port
● VGA	VGA port.
● AUDIO OUT	RCA output port for audio output, 2 in total.
● USB	USB port
● LAN	Network port.
● eSATA	External SATA hard disks port for expanding recording space. (depends on model)
● AC 110/220V	Socket for an AC 110/220V input.

