

KATHERINE DANIELS®

Essential Deep Cleansing & Skin Rejuvenating System

Dual Action Skincare Device

User Manual for KD3030

Product Description

Combining ultra-high frequency vibrations with 1500 soft silicone massage points, you will achieve a supreme skin cleansing experience. Your skin will feel soft and smooth, as it would after a professional salon treatment. With daily use, skin congestion and superficial imperfections are greatly reduced. This system will also aid penetration of active ingredients from concentrates and creams and will work to tone and firm your skin.

High Frequency Vibration + Speed Control + Silicone Massage Points

Soft silicone massage points; one side is for cleansing and exfoliating, the other side is for anti-ageing, skin toning and firming massage.

The ultra-high frequency vibration gives you a “vibro massage.” The 15 different speed control allows you to select the depth of the treatment to suit your skins comfort.

A Lithium-Ion rechargeable battery is housed inside the unit and charging time is approximately one hour (through a USB lead) and lasts for up to 3 hours of use, depending on the speed selected.

How to Use

Firstly, you should remove your eye make-up. We recommend Katherine Daniels Essential Face & Eye Make-up Remover for total cleansing of your delicate eye area.

Next proceed with your first cleanse using Katherine Daniels Essential Cleansing Milk, Essential Refreshing Cleansing Gel or Essential Miracle Cleansing Jelly. Follow the instructions for use for your chosen product.

Now to deep cleanse your skin. Once again apply your chosen Katherine Daniels Essential Cleansing product then introduce the Deep Cleansing System.

Press the (o) on switch, found on the front side of the device. This starts the machine at a medium speed, there are 15 speed settings, press the (+) or (-) buttons that are next to the (o) button repeatedly until you achieve a comfortable speed for your skin.

The device should glide over your skin, you do not need to apply pressure to the skin with this machine.

Please note that we do not recommend the use of the machine directly over the eyes, you can use it up to the eye contour bone, but we advise you to reduce your chosen speed around the eye contour area.

If you have a damaged capillary network (red blood capillaries) anywhere on your face and neck, please reduce the speed and reduce pressure directly on these areas or consider avoiding the area.

For large patches of damaged/broken capillaries, i.e. the cheek, do not use the machine over this area.

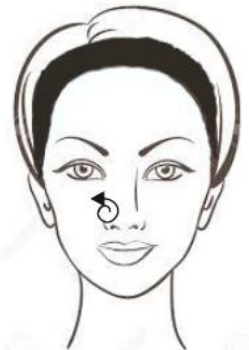
For best results, follow our deep cleansing pictorial below...



Starting at your chin, sweep the device in one movement across the jawline towards your ear. Repeat this movement working up the face to the eye bone.



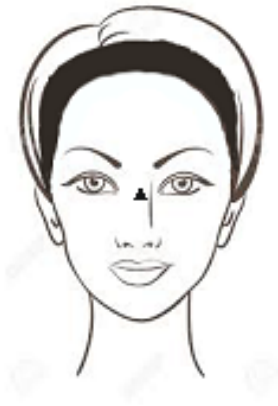
Repeat on the opposite side of your face.



In small circular movements, work the cleansing device around the side of your nose.



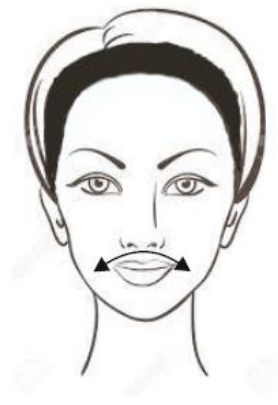
Repeat on the other side of your nose.



From the tip of your nose, sweep the cleansing device in an upward movement finishing in-between your brows.



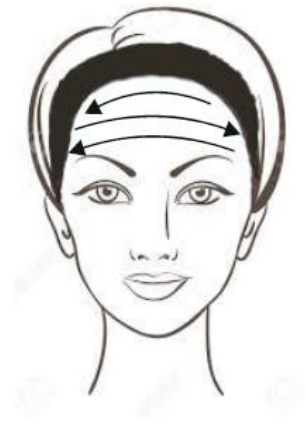
In small circular movements, massage the tip of your nose.



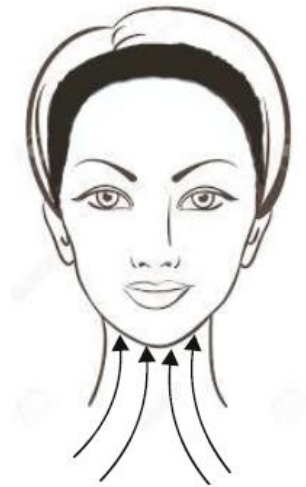
Sweep the cleansing device across your upper lip area, from one side to the other.



In small circular movements, massage the cleansing device over your chin area.



Moving from one side of your forehead to the other, sweep the cleansing device across, working from temple to temple.



From the base of your neck, sweep the cleansing device in an upward movement, finish at your jawline. Work from one side of your neck to the other. Remember to include the back of your neck.

Once you have completed your deep cleansing routine remove any product with a clean, damp cloth removing product, dirt, impurities and any remaining make-up.

If you have congested skin, we recommend you deep cleanse in the morning and the evening.

Discontinue any treatment if it does not feel comfortable, or, if you experience excessive redness or any 'not normal' reaction.

Toning and Firming Massage using the back of the Deep Cleansing & Skin Rejuvenating System

You will see the contact points on the back are thicker and more spaced out. These are ideal for a toning, firming, anti-ageing massage and will help penetrate active ingredients in your favourite Katherine Daniels concentrates and treatment creams. Apply your concentrate/cream in the usual way to thoroughly cleansed skin and massage in with your fingertips. Switch the Deep Cleansing and Skin Rejuvenating System on using the (O) button. This starts the device at a medium speed, press the (+) or (-) buttons that are next to the (o) button repeatedly until you achieve a comfortable lower speed for your skin.

By following our rejuvenating massage pictorial, you will achieve best results.



Starting at your chin, sweep the cleansing device in one movement, across your jawline to the ear. Repeat this movement working up the face to the eye bone, lifting your skin gently as you make each movement.



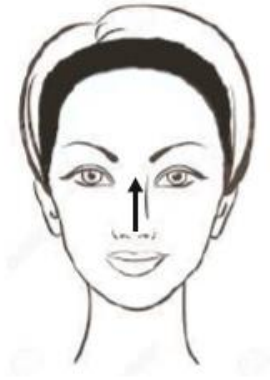
Repeat on the opposite side of your face.



From in between your eyebrows, sweep the cleansing device in out ward movements towards the hairline. Continue to work up the forehead. Lift your eyebrows gently with your first movement and make all movements gently lift your skin.



Repeat on the other side of your forehead.



From the tip of your nose, sweep the cleansing device in an upward movement finishing between the brows.



In small circular movements, massage the tip of the nose, lifting between your brows as you move upwards.



Sweep the cleansing device across your upper lip area from one side to the other. Pay particular attention to any vertical lines on your lip line, gently smooth these.



In small circular movements, massage the cleansing device over the chin area. From the outer lips lift up to your nose, lifting the line that forms vertically between your nose and your mouth.



Moving from one side of your forehead to the other, sweep the cleansing device across, working from temple to temple smoothing horizontal lines.



From the base of your neck, sweep the cleansing device in a lifting movement, take the movement up and over your jawline lifting your skin gently as you go forming a stronger, smoother jaw line.

The device should glide over your skin, apply gentle pressure for the rejuvenating massage.

Please note that we do not recommend the use of the machine directly over the eyes, however you can use it up to the eye contour bone, but we advise you to reduce your chosen speed around the eye contour area.

If you have a damaged capillary network (red blood capillaries) anywhere on your face and neck, please reduce the speed and reduce pressure directly on these areas or consider avoiding them. For large patches of damaged/broken capillaries, ie the cheek, do not use the device over this area.

Discontinue any treatment, if it does not feel comfortable or if you experience excessive redness or any 'not normal' reaction.

You may experience a slight pinkness to your skin, this is a normal reaction to the stimulating effects of our rejuvenating massage - normal skin colour will return within a few minutes.

For cleaning your Deep Cleansing and Skin Rejuvenating System, please see our cleaning and maintenance section of this manual.

The Katherine Daniels Deep Cleansing and Skin Rejuvenating System

Front

Precision deep cleansing
Normal cleansing zone
ON/OFF switch
+ /- 15 speed control
LED light indicator



Back

Deep massage skin toning zone
Waterproof cover & charging port



Charging lead

USB to KD3030 device



Front:

- Over 1000 fine silicone massage contact points.
- Incorporating a large area for normal and a smaller area for deep cleansing.
- The central push button gives you the ON/OFF switch.
- + and - speed adjustment when the massager is switched on.

Base:

- A light diode flashes for a second when the unit is switched ON or OFF and when the speed is adjusted.
- The diode will be flashing while the massager is on charge and stay on permanently when it is fully charged.

Back:

- Up to 500 silicone massage contact points.
- Use for all anti-ageing and skin rejuvenating massage treatments.
- There is a charging port with a waterproof cover to accept the rounded end of the charging lead.

Charging lead:

- Supplied is a 'USB to unit' lead with each system.
- USB connections can be plugged into USB to mains plug socket adapters or the USB port on a computer. (Please note we do not supply plug socket adapters).

To charge:

- Remove the waterproof cover from the charging port on the back of the KD3030.
- Insert the rounded end of the charging lead.
- Insert the USB end of the charging lead into a mains plug socket adapter and then into a mains wall socket or other form of charger (i.e. Computer) and switch on.
- Charge for approximately one hour, from empty to full.
- The diode light will be flashing while the massager is on charge and stay on permanently when it is fully charged. When this light stays on, your KD3030 is fully charged.
- Remember to re-insert the waterproof cover to the charging port.
- DO NOT LEAVE RE-CHARGING UNNATENDED OR OVERNIGHT

Please do not:

- Use whilst charging.
- Dismantle, modify or attempt to repair the unit.
- Use if you have sunburn, skin inflammation, open lesions or cuts.
- Immerse the whole unit in water.
- Use with abrasive or granular or silicone solvent material.
- Use if you have a pacemaker fitted or if you are pregnant.

Please do:

- Keep in medium temperature environment between +5°C and 35°C, out of direct sunlight and not on radiators.
- Always fully charge your unit before it is first used.
- Keep out of reach of children.

Maximum recommended 'Deep Cleansing Routine' is up to, but no more than 2 minutes.

15-20 seconds per area.

Recommended frequency up to 2 times a day, morning and evening.

Maximum recommended 'Anti-Ageing & Toning Massage Routine' is up to, but no more than 5 minutes.

20-30 seconds per area.

Recommended frequency up to 2 times a day, morning and evening.

CLEANING and MAINTENANCE

Your Katherine Daniels Deep Cleansing & Skin Rejuvenating System is sealed for life and requires no internal maintenance.

The only maintenance for the external parts is for you to keep the silicone rubber free from sediment by rinsing off with clear water and drying gently with a soft cloth or towel. However, if you are using your Deep Cleansing & Skin Rejuvenating System with cleaning products, concentrates and creams, we recommend following the "first time" clean regularly. Please see below for more details.

"Not recommended" is the use of cleaning products containing silicone solvents, acetone, petrol, alcohol, granular abrasives or clay or aromatherapy based cleansers as they may damage the soft contact points and the silicone sleeve.

Before using for the "first time", clean the silicone massage points with a gentle hand wash, or washing up liquid, free from ingredients found on our **"not recommended"** list above.

OUR GUARANTEE

for the Katherine Daniels Deep Cleansing and Skin Rejuvenating System

12 month guarantee:

We guarantee this Massager for a period of 12 month from the date of your purchase. Please keep your receipt of purchase as this acts as your guarantee.

This guarantee covers all faulty workmanship and materials.

In case of a fault occurring, you should contact us directly and send the faulty unit back to us with the original purchase receipt. Claims cannot be processed without the original purchase receipt.

Exclusions to 12 month guarantee:

Any damage to the soft silicone cover, contact points or charging port caused by misuse, accident or neglect is not covered by our guarantee.

Warranty is void if the massager has been opened, disassembled or altered.

External accessories, such as the USB lead and Micro Cloths are not covered.

THESE TERMS IN NO WAY EFFECT OR REDUCE YOUR STATUTORY RIGHTS.

TROUBLE SHOOTING GUIDE

- KD3030 does not vibrate and diode light does not flash when the ON / OFF button is pressed.
 - Your battery is empty... recharge.
 - Microprocessor needs rebooting... plug in recharge lead and switch on.
- KD3030 does not vibrate when switched on with the charging lead connected.
 - Check that your wall plug is switched on.
- KD3030 has a grainy, sticky texture to the silicone sleeve and contact points.
 - Do not use. The silicone is very strong and long lasting but for some reason it appears that it has degraded or sustained damage. Please contact us at info@katherinedanielscosmetics.com

NOTE:

It is accepted that the use of this Deep Cleansing & Skin Rejuvenating System is at your own risk. Neither Katherine Daniels nor its Retailers accept any responsibility or liability for any injuries (physical or other) caused directly or indirectly from the use of this equipment.

The unit may be changed or improved without notice.

Mechanical and Electronic information

Material:	Soft grade, skin safe silicone cover with over 1000 fine contact points on one side and 500 massage points on the other.
Colour:	Blue silicone
Size:	80 x 75 x 35 mm
Weight:	67 grams
Battery:	Lithium Ion (Li-ion) 3.7V 250mAh, rechargeable
Charging Time:	1 hour
Battery Life:	2 - 3 hours, depending on speed selection
Speed Interface:	Adjustable 15 levels Low speed: 3,600 r/m} Medium speed: 5,600 r/m} variation +/- 20% High speed: 6,700 r/m}
Vibration Frequency:	9,800 hz
Current:	80 - 100 mA
Motor Speed:	7,000 r/m (+/- 20% variation)
Minimum Voltage:	2.8 - 3.0 V
Power Input:	DC 4.5V to 5 V, 1A
Standby Current:	8 uA
Storage temperature:	+5°C to 30°C recommended



CE

RoHS



Recycle



Disposal



Instructions

Disposal of your KD3030

Dispose only at appropriate collection points for recycling electrical waste.

Do not disassemble, puncture or crush.

Do not dispose of in fire or water.

www.katherinedanielscosmetics.com

Manufactured in China for Katherine Daniels