

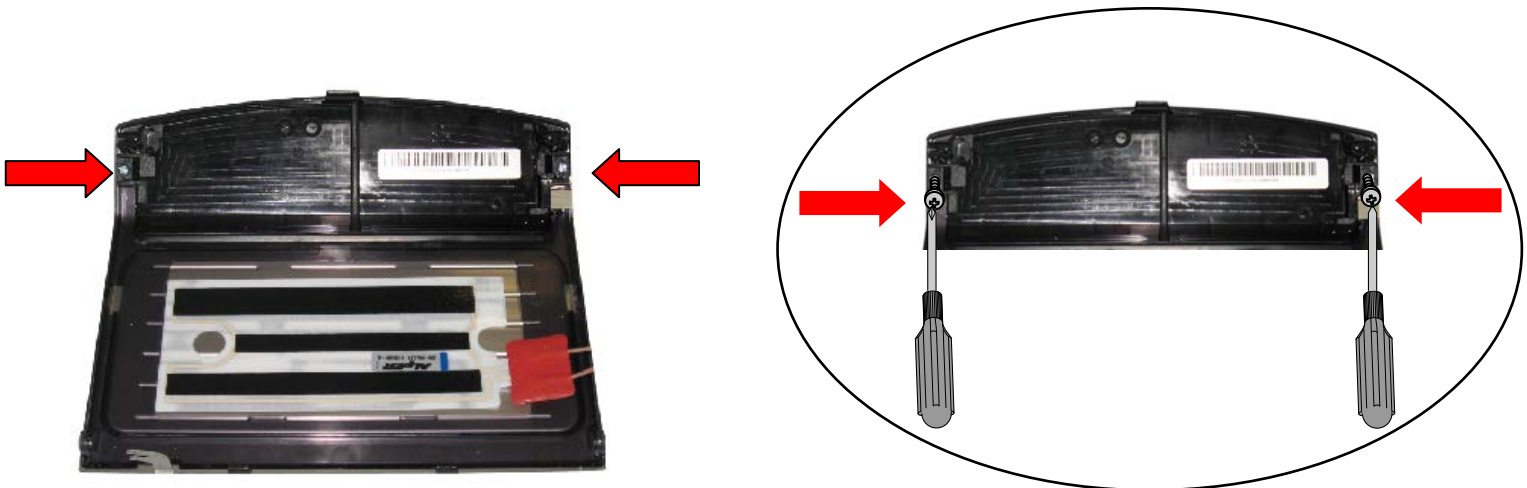
MODELLI / MODELS : ECAM26.455
OGGETTO : Visualizzazione messaggi errati
SUBJECT : Wrong display indication
GENNAIO / JANUARY 2012
 **ITALIANO**

Vi informiamo che, nel caso in cui vengano visualizzati messaggi errati (vedi immagine) la causa può essere dovuta ad un problema di collegamento tra scheda display e scheda potenza. Nell'eventualità, procedere come segue:



a) verificare che il connettore del cavo piatto sulla scheda potenza sia ben inserito. Se non lo fosse, sistemarlo.

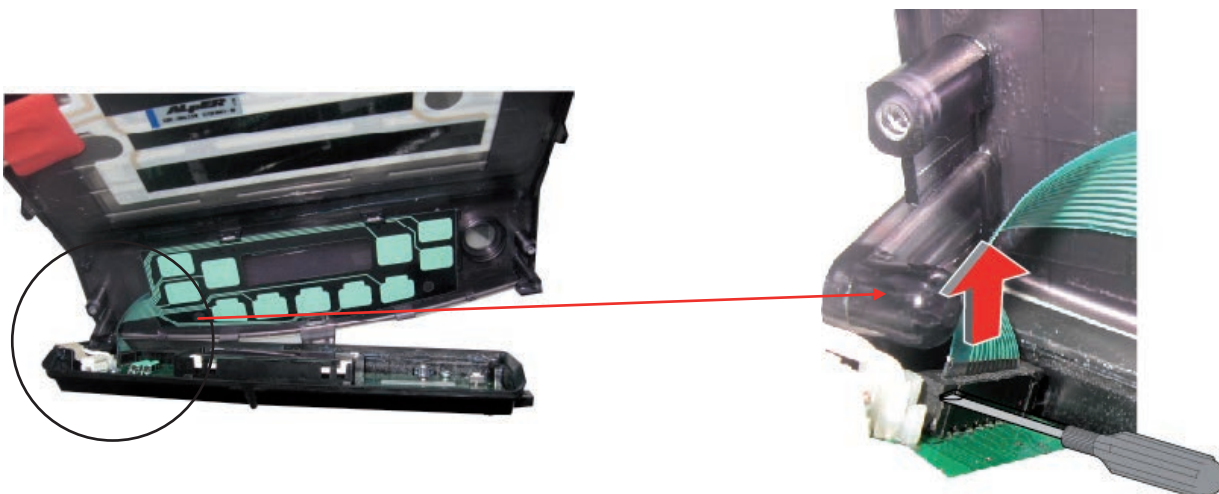
b) nel caso in cui il cavo fosse correttamente connesso, procedere con la sostituzione della scheda display, dal momento che il cavo piatto è saldato ad essa e non può essere sostituito come singolo pezzo.



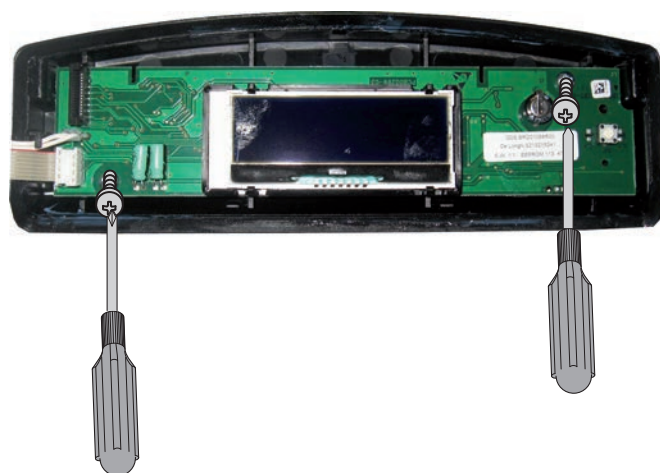
Togliere le 2 viti su ciascun lato

1. Spingere in avanti il coperchio
2. Una volta sganciato dal gancio frontale, sollevare leggermente il bordo superiore
3. Spingere delicatamente indietro il coperchio, per liberarlo dai due ganci posteriori
4. Togliere il coperchio sollevandolo.





5. Alzare con delicatezza la chiusura del connettore



6.a Togliere le 2 viti
6.b Togliere la scheda

ATTENZIONE: la scheda da ordinare è a codice **5213215521**

MACCHINE DEL CAFFE' / COFFEE MAKERS

MODELLI / MODELS : ECAM26.455

OGGETTO : Visualizzazione messaggi errati

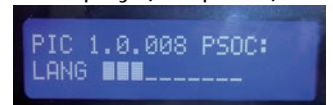
SUBJECT : Wrong display indication

GENNAIO / JANUARY 2012



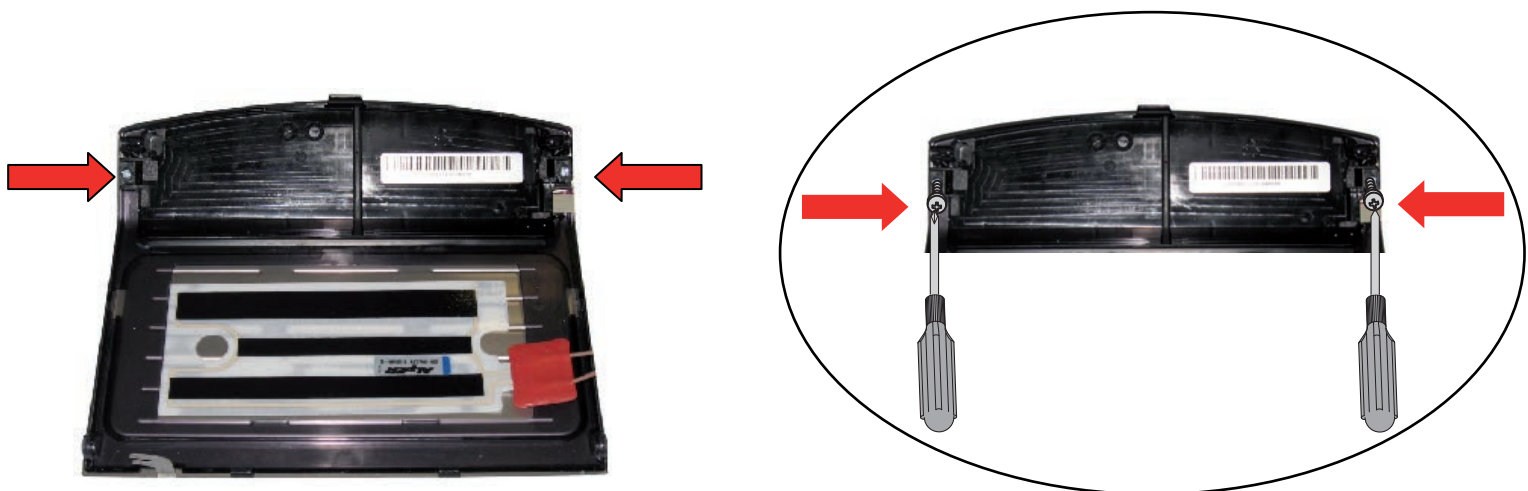
ENGLISH

We inform you that it could be possible, in the indicated model, to read wrong indication on Display (see photo). The problem is due to a lack of communication between the main PCB and the display one. In order to solve the problem, you will proceed as follows:



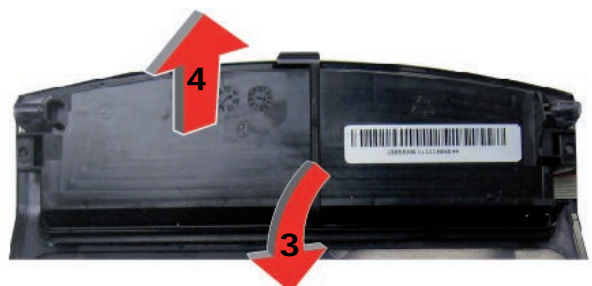
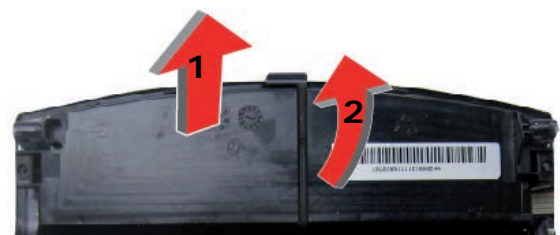
a) check if the connector of the flat cable on the main PCB is well and completely inserted on the slot. If it is not, pushing it well in place might be enough to solve the problem.

b) if cable is well connected, means the problem is on the flat cable itself. In this case, you will have to replace the display PCB, as the flat cable has the other end welded on it and is not available as single spare part.



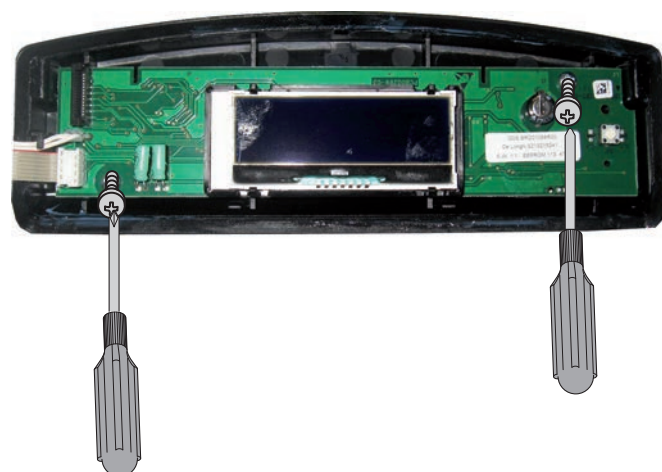
Screw off the 2 screws indicated by arrows.

1. Push cover forward.
2. Once cover is detached from the hook, lift the border up slightly.
3. Push back with care the cover, in order to detach it from the hooks.
4. Take off cover lifting it up.





5. Take off with care the connector using a screwdriver.



6.a Unscrew the 2 indicated screws
6.b Take off PCB

ATTENTION:

Only for Australia version: pcb part number to be ordered is 5213214891

All other versions: pcb part number to be ordered is 5213215521