



NOTE: This Performance Guide is to be used in conjunction with and not a substitute or as a replacement for the Manufacturer's Machine Manual provided with the subject equipment; provided however, to the extent that this Performance Guide conflicts with the Manufacturer's Machine Manual the conflicting language in the Performance Guide should be disregarded with any user proceeding in accordance with the Manufacturer's Machine Manual. If you have any questions feel free to contact us at 1-800-537-2552.

©2004, Leonard Manufacturing • Reprint 2005

2728 Erie Drive / Weedsport, New York 13166-9505
phone: 315-834-6611 / fax: 315-834-9220 / www.leonardtreecare.com

Leonardi

Grinding

Learn More,
Make More,
Be More.



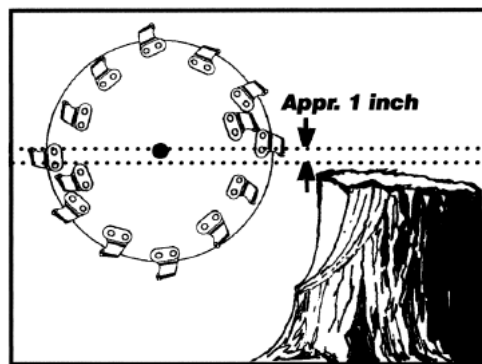


G R I N D I N G

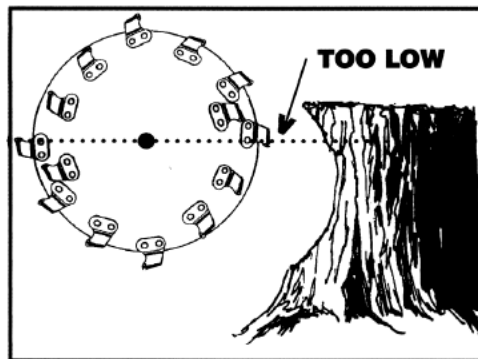
Grinding:

Height of Cut:

Correct Cutting Height

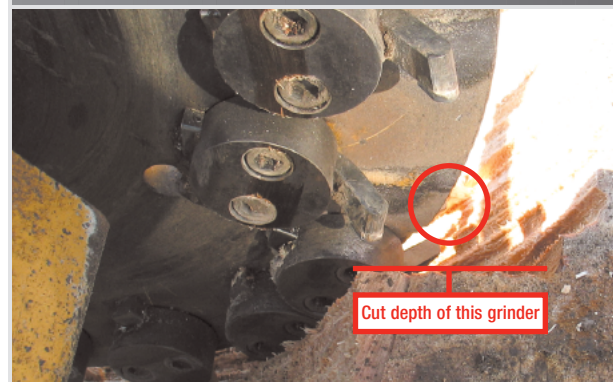


Incorrect Cutting Height



Depth of Cut: Ideal cut depth should match the configuration of your grinder's wheel pattern. A wheel that has a pattern of a 6-tooth spiral, will have 6 teeth that define the cut depth for that grinder. The depth of cut is basically the distance from the innermost tooth to the outermost tooth.

Correct Cutting Depth



Incorrect Cutting Depth



Sweeping: PLACE MARK ON CONTROL KNOB so you can count the turns. Now back out 2-1/2 to 3 turns (so swing speed is very slow at first) and start cutting with the correct height of cut (See Illustration #3 & #4) and the correct depth of cut, (See Illustration #6). At the same time, slowly adjust the knob so you can run the machine with a sufficient load.

Incorrect Cutting Height

CONTROL
KNOB FOR
SWING
SPEED



Place a mark here

CONTROL
LEVERS



Gently turn
knob clockwise
until it stops

Why? Advantages of using this method are: **1.** You will have the least amount of passes to remove the stump. This reduces any wasted motion outside the stump. **2.** This also slows down your swing speed giving you more reaction time. **3.** If you do hit something, you will spread the force out among the teeth and have less damage. **4.** This also spreads the wear out evenly, maximizing the life of the teeth.