

Tulip Bulb Sales located in Scholte House and Thistles.

Mail order forms available

DONATIONS will be appreciated.

Contributions are used for Pella Beautification Projects

PELLA GARDEN CLUB is a non-profit educational organization.

We accept cash, check and credit cards.

The Pella Garden Club

CLUB PROJECTS

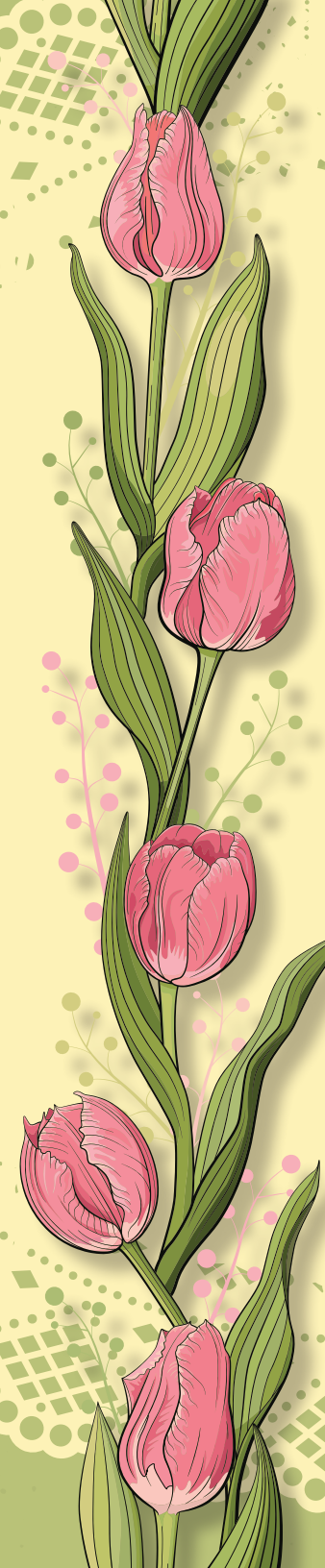
Tulip Time Flower Show (56 years), Christmas Tour of Homes (50 years), Summer Garden Party (4 years), Fall Flower Show, "Adopt-A-Curb" Street Plantings, Memorial Tree Planting, Franklin Place Landscaping, Downtown Street Tree Planting, Opera House Restoration, Arbor Day Trees for Children, Pella Dollars for Scholars, Tulip Bulb Sales, Scholte Garden Landscaping, Tulip Time Float Refurbishing, Vermeer Windmill Project, Historical Village Perennial Garden & Landscaping, Hospice House Landscaping, Blue Star Marker - Brinkhoff Park, Fair Haven Memorial Garden - 2014-2017, Scholte House Gardens - 2018, Tuttle House Walkway - 2019, Kiwanis Park - 2020, 2022 Wonder Spelen, Kerstmarkt Market: Christmas, Flash Flowers.

2024 COMMITTEE CHAIRPERSONS

- Chairperson** Janna Boyd, schedule
- Co-Chairperson** Delores Boerigter, schedule
- Artistic Entries** Mary Edwards
Sandy Winkel
- Judging & Judges** Delores Boerigter
- Coffee Time** Nan Tibbets
- Clerks** Marilyn Aldrich
Joanne Pitsch
- Hostesses (during show)** Ann Summitt
- Hostesses (selling bulbs)** Nola Leubbert
- Tulip Identification** Barb Braafhart
Sandy Heerema
Marlyn Ebbers
- Tulip Bulb Sales** Teresa Hedger
Candace Thersby
Charity Andeweg
- Dismantling** Shana Chapel
Kathy Cole
Karin Hudak

Pella Garden Club
61st Annual Flower Show
presents

*Holidays
With Tulips*



January 2024							February							March						
S	M	T	W	T	F	S	S	M	T	W	T	F	S	S	M	T	W	T	F	S
	1	2	3	4	5	6					1	2	3						1	2
7	8	9	10	11	12	13	4	5	6	7	8	9	10	3	4	5	6	7	8	9
14	15	16	17	18	19	20	11	12	13	14	15	16	17	10	11	12	13	14	15	16
21	22	23	24	25	26	27	18	19	20	21	22	23	24	17	18	19	20	21	22	23
28	29	30	31				25	26	27	28	29			24	25	26	27	28	29	30
April							May							June						
S	M	T	W	T	F	S	S	M	T	W	T	F	S	S	M	T	W	T	F	S
	1	2	3	4	5	6			1	2	3	4							1	
7	8	9	10	11	12	13	5	6	7	8	9	10	11	2	3	4	5	6	7	8
14	15	16	17	18	19	20	12	13	14	15	16	17	18	9	10	11	12	13	14	15
21	22	23	24	25	26	27	19	20	21	22	23	24	25	16	17	18	19	20	21	22
28	29	30					26	27	28	29	30	31		23	24	25	26	27	28	29
July							August							September						
S	M	T	W	T	F	S	S	M	T	W	T	F	S	S	M	T	W	T	F	S
	1	2	3	4	5	6					1	2	3							
7	8	9	10	11	12	13	4	5	6	7	8	9	10	1	2	3	4	5	6	7
14	15	16	17	18	19	20	11	12	13	14	15	16	17	8	9	10	11	12	13	14
21	22	23	24	25	26	27	18	19	20	21	22	23	24	15	16	17	18	19	20	21
28	29	30	31				25	26	27	28	29	30	31	22	23	24	25	26	27	28
October							November							December						
S	M	T	W	T	F	S	S	M	T	W	T	F	S	S	M	T	W	T	F	S
		1	2	3	4	5					1	2								
6	7	8	9	10	11	12	3	4	5	6	7	8	9	1	2	3	4	5	6	7
13	14	15	16	17	18	19	10	11	12	13	14	15	16	8	9	10	11	12	13	14
20	21	22	23	24	25	26	17	18	19	20	21	22	23	15	16	17	18	19	20	21
27	28	29	30	31			24	25	26	27	28	29	30	22	23	24	25	26	27	28

May 2, 3, 4, 2024

9:00 a.m. – 6:00 p.m.

Located at the Scholte House,
North Side of Central Park.



DESIGN RULES

1. This Flower Show conforms to the standards established by National Garden Clubs, Inc. The Handbook for Flower Shows, 2017 Edition, with revisions printed in the National Gardener Magazine is the authority for all issues not covered by the schedule, which is the law of the show.
2. Classes in the Tulip Time Flower Show are open to all flower growers and arrangers. Exhibitors may make only one entry in each class but may enter as many classes as desired. A design must be the current work of only one exhibitor and that exhibitor's name must appear on the entry card.
3. Entries in the Design Division must be preregistered with the Design Entries Chairman. The Design Entries Chairman will prepare all entry cards for all design classes and place them several days before the show is judged.
4. All exhibits must be in place by 11am on Wednesday, May 1. The Classification Chairmen for the show will check exhibits for conformity to the schedule prior to judging and sign the entry card. Final determination for conformance is the judges' responsibility.
5. Judging will begin at 1pm on the day of the show. Only the General Chairman, the Classification Chairman, Judges and the clerks will be allowed on the show floor during the time of judging. Judging will be by the NGC Standard of Awarding, HB p. 5 and any additions found in the National Gardener.
6. Tulips must be used in all design entries except Small Design. Other flowers and foliage may be used with tulips. Plant material is required in all classes. Fresh plant material may not be treated in any manner. Plant material that has been treated to alter its exterior appearance may be used only in its dried state.
7. All plant material must be identified on the 3" x 5" index card provided.
8. No artificial flowers, foliage, fruits or vegetables are permitted in the Design Division. No primary or secondary noxious weeds are permitted.
9. Plant material should be kept fresh and presentable by the exhibitor during the show.
10. The Pella Garden Club will strive to assure the safety of all items after arrival and placement, but is not responsible for any loss or damage to exhibits.
11. All containers, backgrounds, and design material must be called for before 12pm noon on Monday May 6, 2024.
12. Nationally accredited judges will judge the show according to the schedule and the Standard System of Awards. The decisions of the judges' are final.

AWARDS DESIGN DIVISION I

CLASS AWARDS

The National Garden Club Standard System of Awards. Only one first place (blue) ribbon per class. Must score 90 or above. Only one second place (red) ribbon per class. Must score 85 or above. Only one third place (yellow) ribbon per class. Must score 80 or above. One or more honorable mention (white) ribbons as merited. Must score 75 or above.

SECTION AWARDS

offered by the National Garden Club

To be eligible for these awards the design must score 95 or more. There must be a minimum of three classes with four entries in each.

DESIGNER'S CHOICE AWARD - It will be awarded to the highest scoring design among the following Section B.

Exhibitors have complete freedom to choose plant materials and other components within NGC policies.

TABLE ARTISTRY AWARD - It will be awarded to the highest scoring design among Section A.

Exhibition Type - designer's choice of plant materials with decorative units permitted without consideration to functional placement.

Functional Tables - planned settings with service of dishes, beverage containers, table coverings and napkins where convenience and order prevails.

SMALL DESIGN AWARD - It will be awarded to the highest scoring design in Section C.

DIVISION AWARDS

offered by the National Garden Club

AWARD OF DESIGN EXCELLENCE - It will be awarded to the highest scoring exhibit in the entire Design Division entered by a single exhibitor.

SWEEPSTAKES AWARD - It is awarded to the exhibitor earning the highest total number of points and is calculated by the Flower Show Committee. Blue ribbon = 3 points; Red ribbon = 2 points; Yellow ribbon = 1 point.

PELLA GARDEN CLUB AWARDS

NOVICE AWARD - It is awarded to the best design made by an exhibitor who has never won a blue ribbon.

GARDEN CLUB AWARD - It is awarded to a non-Garden Club member for an outstanding design that has not won a major award.

75th ANNIVERSARY AWARD - It is a traveling trophy awarded to a design showing tulips to their best advantage.

25th ANNIVERSARY AWARD - It is a traveling trophy given to an exceptional design that has not won a major award and vividly communicates expression of title and distinction.

PRESIDENT'S AWARD - It is a traveling trophy awarded to a Garden Club member for an exceptional design that has not won a major award.

QUEEN'S AWARD - It is awarded to the exhibitor earning the second highest total of points as calculated by the Flower Show Committee. Blue ribbon = 3 points; Red ribbon = 2 points; Yellow ribbon = 1 point.

PEOPLE'S CHOICE AWARD - Pella Garden Club members only. Using the 2 brass/glass containers, no artificial plant material. **Tulip Time in Pella**. Using the provided post-it notes vote for your favorite arrangement by number and placing your ballot in the ballot box provided.

TULIP TIME FLOWER SHOW 2024

DESIGN DIVISION

SECTION A – TABLE ARTISTRY

(NOTE: Staged as listed)

1. Celebrating Christmas (4)
Functional table set for four place settings on a table 30"x79"
2. 4th of July (4)
Exhibition table with one place setting
Wooden background 30" wide x 40" high provided
Table covering needed
3. Father's Day (4)
33" round high table set for 2

SECTION B – DESIGNER'S CHOICE

Designs staged on a pedestal

1. May Day Basket (4)
2. Trick or Treat (4)
3. Happy New Year (4)

SECTION C – SMALL DESIGN

Small design 8" wide, 8" high, 9" deep, staged on shelf in glass door cupboard.

1. My Valentine (4)
2. Luck of the Irish (4)
3. Pretty in Pink * cancer survivor month (4)
4. Easter Morning (4)

DESIGN SCALE OF POINTS

Conformance

To Type 7

To Schedule Requirements 7

Design Principles 48

Selection of Components 8

Organization of Components 8

Expression 8

Distinction 14

TOTAL 100