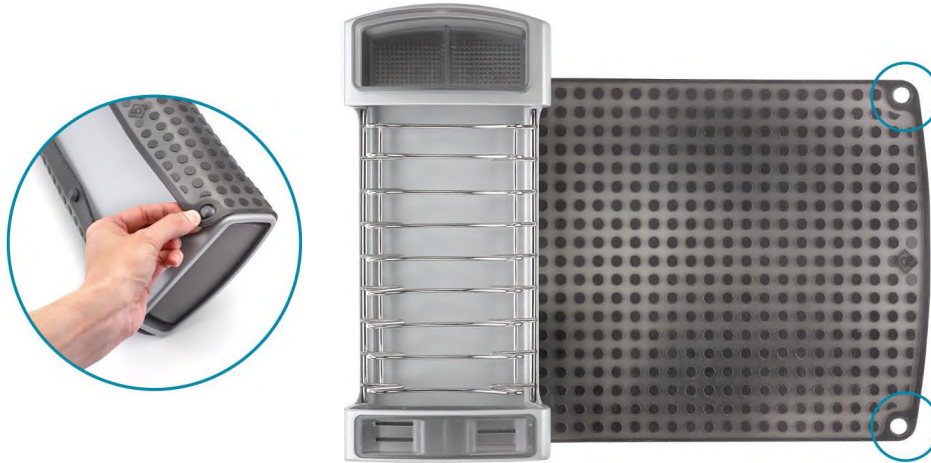


How to Unfold for use

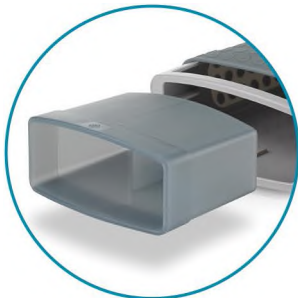
1 **Unfold silicone mat**

There are 5 rubber feet on the underside of the tray. 3 on one side and 2 on the other. Unfasten the silicone from the side with 2 feet only. This will allow the mat to stay secured to the tray and unfold for extra drying space. **IMPORTANT:** only remove the silicone mat from the side with 3 feet when cleaning (the mat is dishwasher safe - top rack only)



2 **Place utensil bin in tray**

The utensil bin rests within the plastic frame of the tray to store. Simply pull utensil bin out, turn so rounded edge of bin matches rounded edge of plastic tray and stand within frame.



Pull out



Turn & align



Insert

See reverse side for storage instructions

For product inquiries contact Polder customer service at +1(203) 888-9208 in the USA or +44(0)1243-780501 in the UK

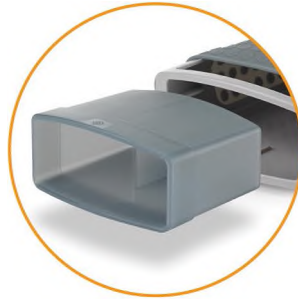
How to Fold for storage

1 Store utensil bin

Remove utensil bin from unit, turn so Polder logo is facing up and insert, flat side first, into side of plastic tray frame for storage.



Pull out



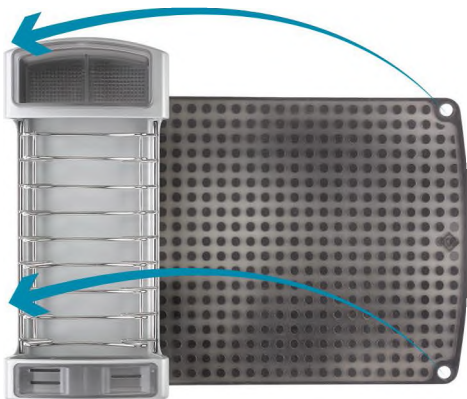
Turn & align



Insert

2 Fold silicone mat over rack

From open position, hold edge of silicone mat and fold over rack. Hook 2 round openings at either corner of the mat over 2 rubber feet on the underside of the unit to secure the mat in place.



See reverse side for use instructions

For product inquiries contact Polder customer service at +1(203) 888-9208 in the USA or +44(0)1243-780501 in the UK