

# Roma

## Chest Changer



Assembly Instructions

Conforms to BS EN 12221:2008+A1:2013

Tutti Frutti Direct Ltd. Unit3, 1000 North Circular Road, London, UK, NW2 7JP

t: +44(0)208 368 5800

e: customerservice@tuttibambini.co.uk

www.tuttibambini.com

# Roma

## Chest Changer

211459



IMPORTANT: RETAIN FOR FUTURE REFERENCE.  
READ CAREFULLY

# Hello,

## PLEASE READ THIS LEAFLET BEFORE ASSEMBLY

Dear Customer,

Thank you for buying Tutti Bambini furniture. Follow the instructions carefully and check that you have all the elements including the fittings before attempting assembly. If there are any missing or damaged parts, please inform us before you start the assembly. Please note that incorrect assembly of your furniture will not be a basis for a claim against the product being damaged.

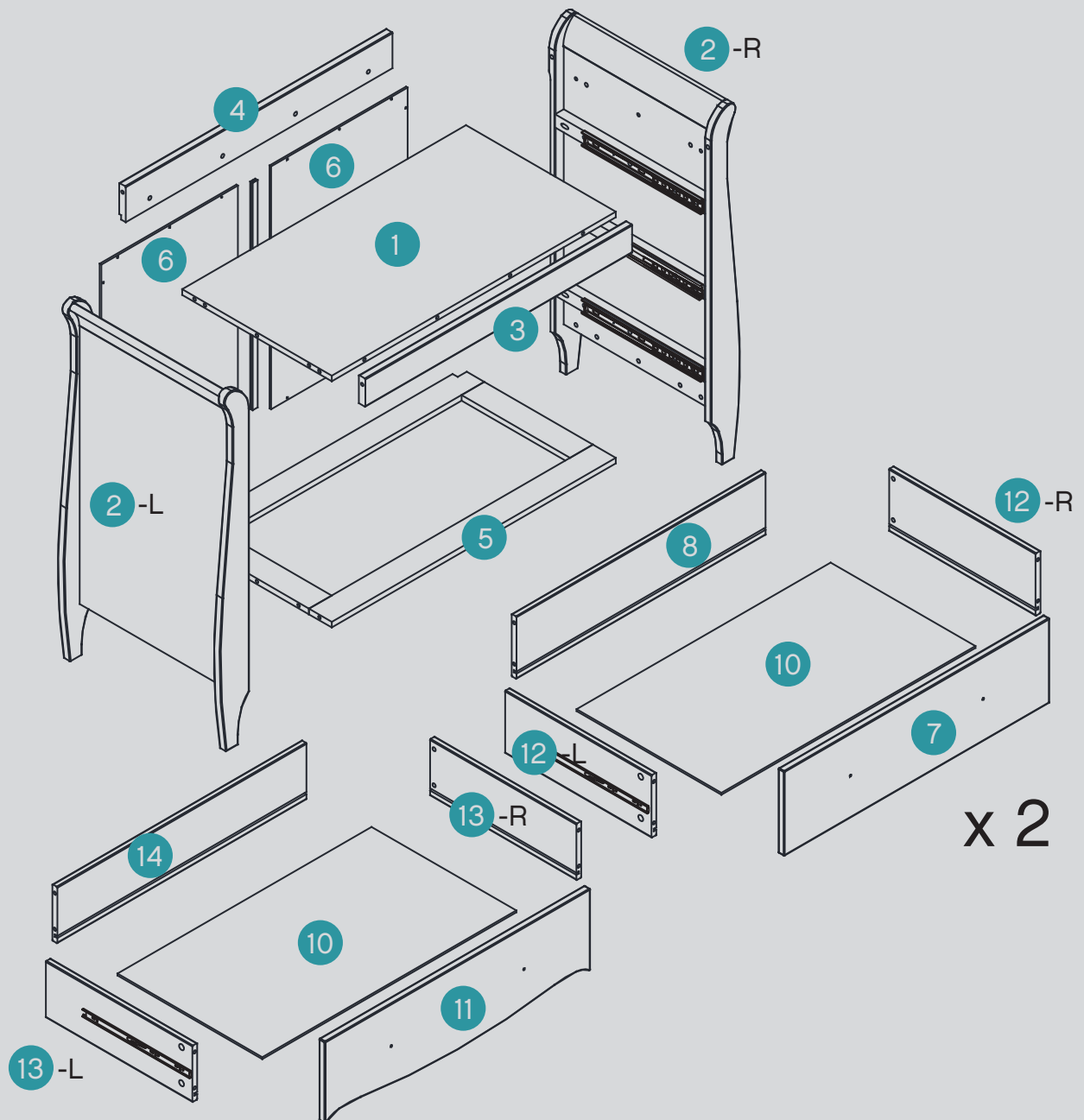
In the unlikely event that your furniture is found to be faulty, we ask that you send an email to: [customerservice@tuttibambini.co.uk](mailto:customerservice@tuttibambini.co.uk) with the following information that can be found on the white label on the outside parcel.

- Name
- Postcode
- Contact telephone number
- Sales order number (found on white label)
  - Product name & colour
  - Damaged part number
- A photo or video of the damaged part

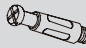


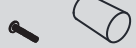


Tutti Bambini guarantee your product against faulty manufacture for a period of 12 months from date of receipt of purchase. This does not affect your statutory rights

*Team Tutti*

# Parts List



## Hardware List

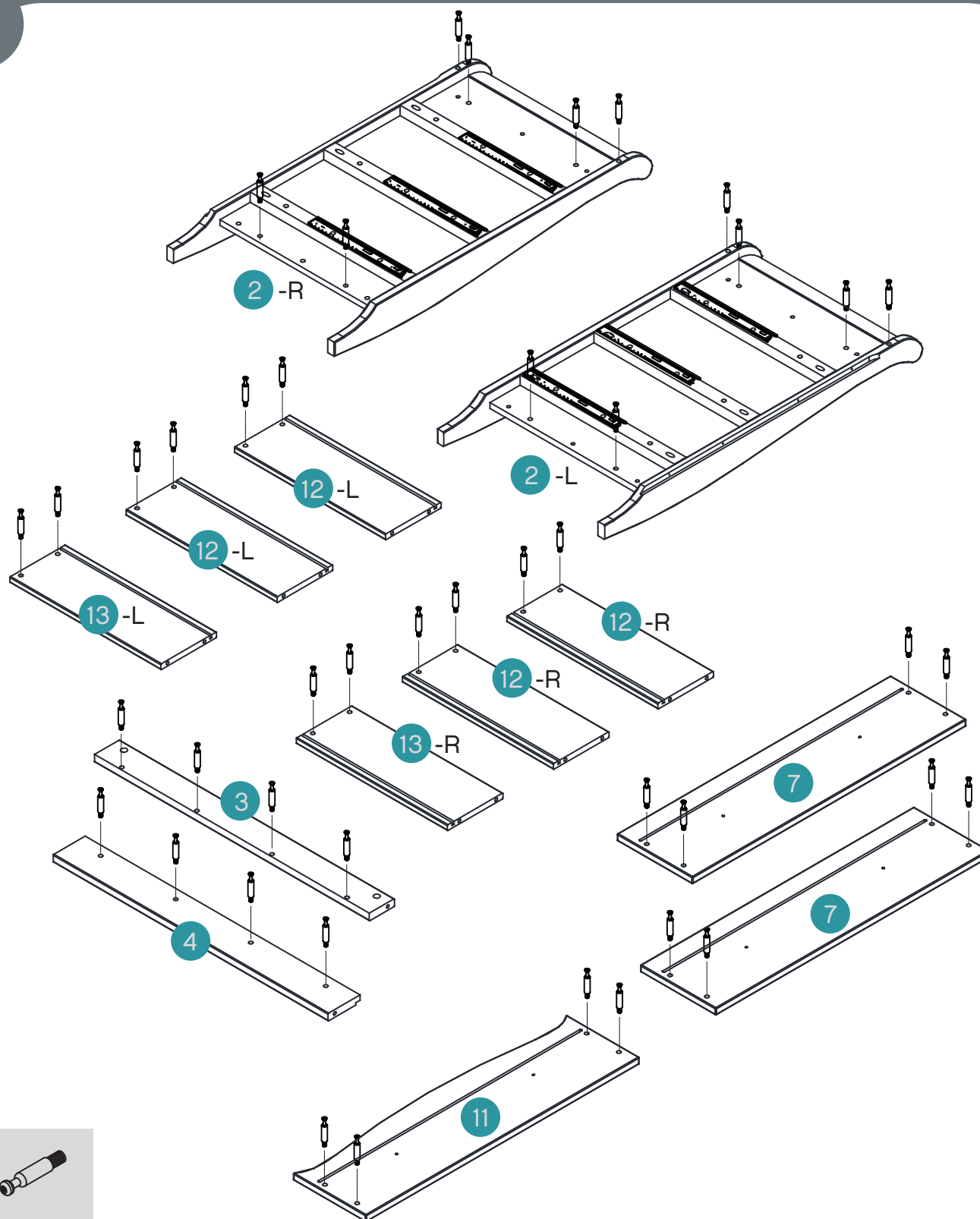
ID# A	 6.5x40mm	Qty 44 pc	ID# D	 Ø3.5x14mm	Qty 20 pc
ID# B	 15x11.5mm	Qty 44 pc	ID# E		Qty 6 pc
ID# C	 640mm	Qty 1 pc	ID# F	 wooden dowel	Qty 12 pc



# Assembling into chest



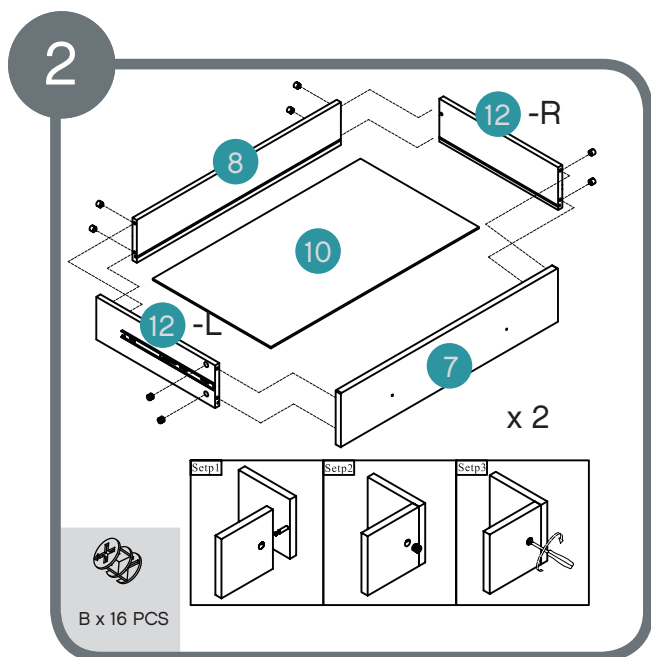
1



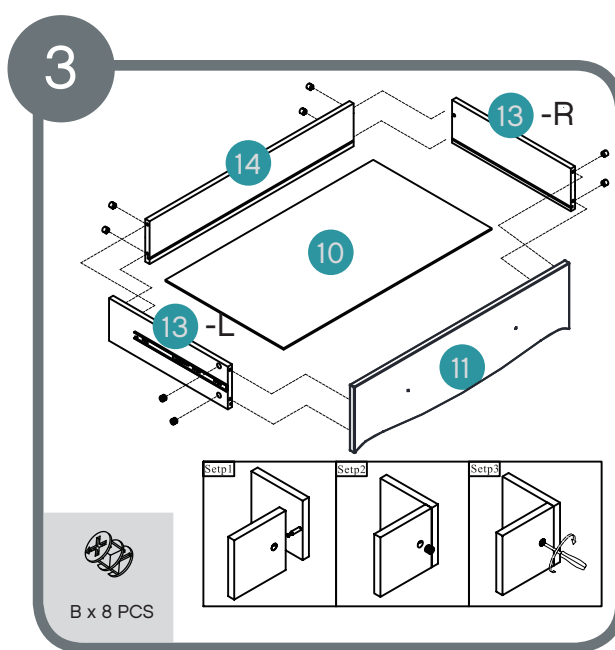
A x 44 PCS

Assemble metal dowels A x 44.

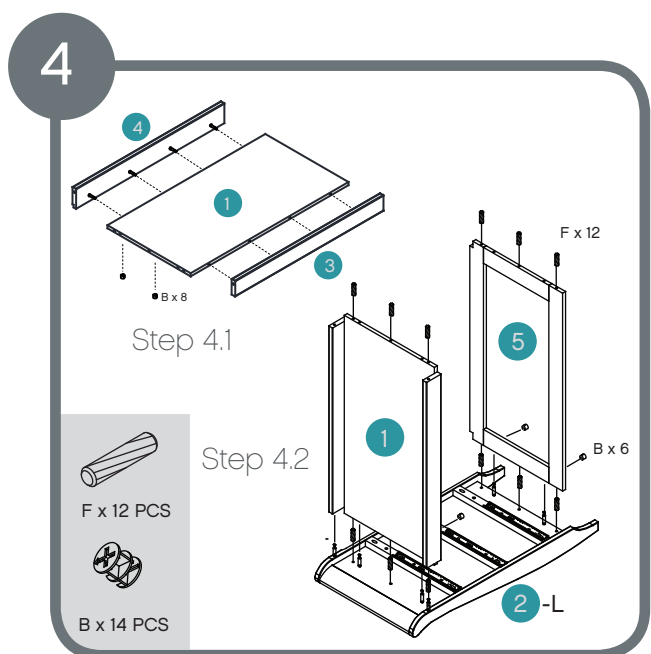
# Assembling into chest



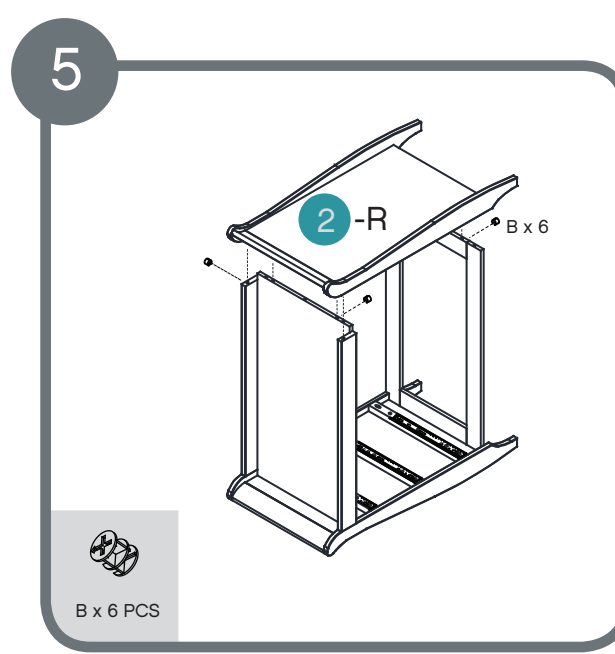
Assemble locking nuts 16 x B.



Assemble locking nuts 8 x B.



Assemble locking nuts 14 x B.  
Put wooden dowels 12 x F into holes on the sides of part 1&5 before connecting.



Assemble locking nuts 6 x B.

# Assembling into chest

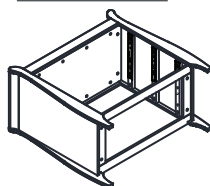


6

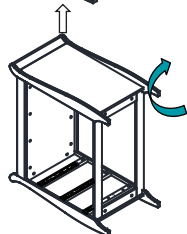
Step 6.3  
With two people,  
tilt chest gently to  
upright position



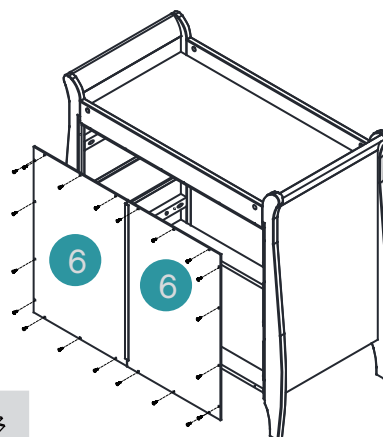
Step 6.2  
Rotate the chest  
for 90° to lie down  
on the floor



Step 6.1  
Lock all the hardwares



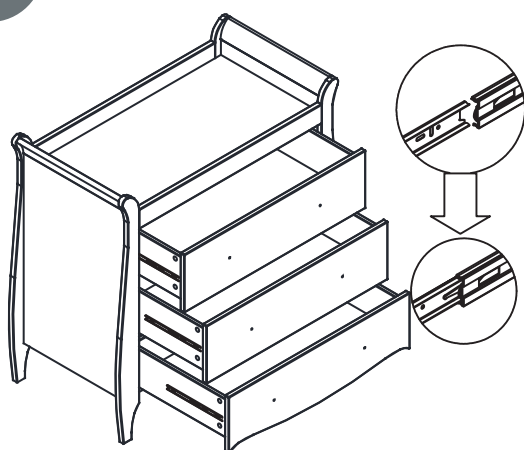
7



C x 1 PCS  
D x 20 PCS

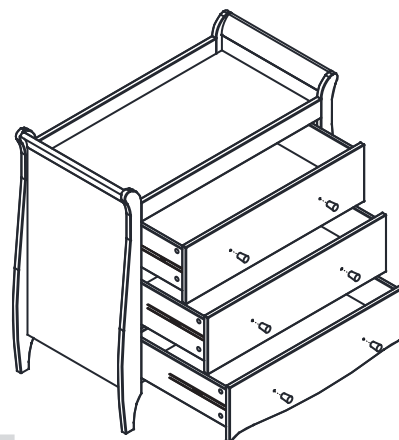
Assemble back panel using 20 x D and C

8



Assemble drawers

9



E x 6 PCS

Assemble handle 5 x E to drawers



# Safety advice and maintenance

## IMPORTANT! KEEP FOR FUTURE REFERENCE: READ CAREFULLY

1. WARNING: Never leave your child unattended. The safety of your child is your responsibility.
2. WARNING: Do not allow children to climb on the chest changer.
3. WARNING: Never leave your child unattended on the chest changer .
4. WARNING: Do not use the chest changer if it is damaged or broken or there are parts missing. Use only spare parts approved by Tutti Bambini.
5. WARNING: Do not place the chest changer in or near the vicinity of open fires or other surfaces of strong heat, such as gas or electric fires.
6. Always leave the chest changer clean and dry. Wipe away any spillage straight away. The chest changer may be cleaned with a damp cloth. Do not use aggressive cleaning agents such as bleach or strong detergents.
7. Check on a regular basis that all fittings and screws are correctly tightened and are not damaged. Loose screws can pinch parts of the body and clothing resulting in the risk of strangulation.
8. Do not twist or pivot the chest changer, if it is to be moved always lift with two people.
9. Maximum weight of the child 11kg or maximum age to 12 months

Product development dictates that components may occasionally differ from the ones shown in the diagrams of these instructions. The right to change the specifications and design of the furniture without prior notice remains with the manufacturer .

### Guarantee

All our products are produced from the finest quality materials and are manufactured under the strictest quality controls. We guarantee all our products or parts thereof against faulty manufacture for a period of one year from date of purchase. This guarantee is not effective against accidental damage or damage caused by incorrect use or neglect. This does not affect your statutory rights.







TUTTI  
bambini 

[www.tuttibambini.com](http://www.tuttibambini.com)

# Join Us



Follow us on Facebook  
TuttiBambiniUK



Follow us on Twitter  
TuttiBambiniUK



Follow us on Instagram  
TuttiBambiniUK