



Terpenes Profile

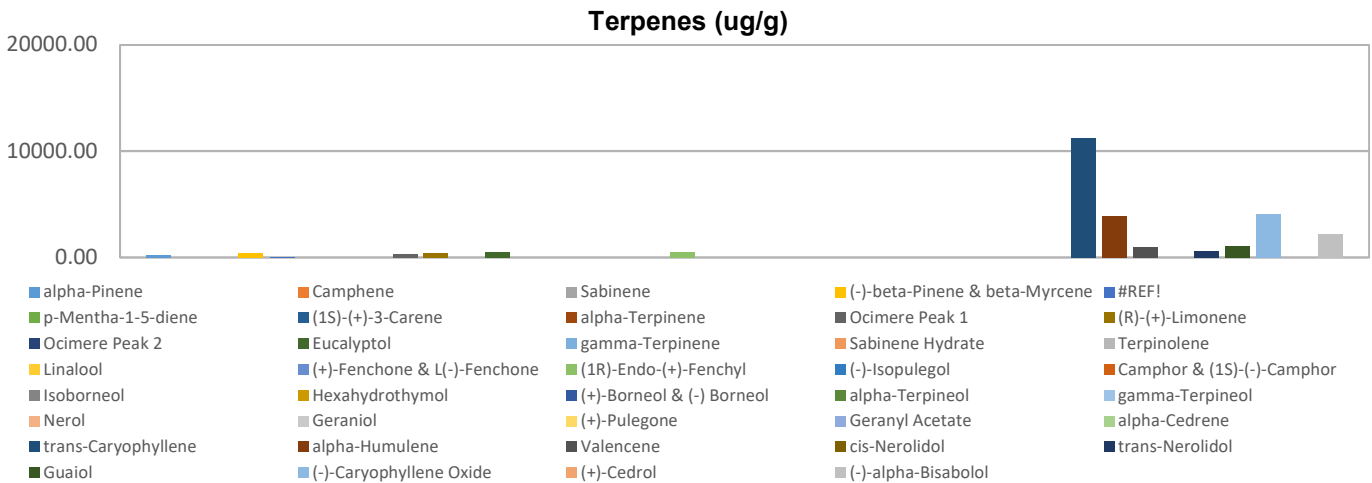
Customer: Appalachian Extracts
Customer Sample ID: Trump 1 CRC
Laboratory Number: 201906-0906
Extraction Technician: CB
Analytical Chemist: MF

Extraction Date(s)	Analysis Date(s)
6/28/2019	6/30/2019

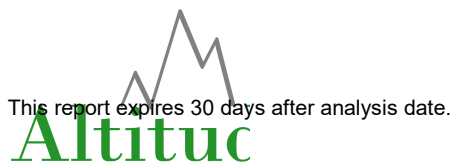
Terpene	Results ug/g	Terpene	Results ug/g
alpha-Pinene	241.46	Isoborneol	
Camphene		Hexahydrothymol	
Sabinene		(+)-Borneol & (-) Borneol	
(-)-beta-Pinene & beta-Myrcene	393.63	alpha-Terpineol	
p-Mentha-1-5-diene		gamma-Terpineol	
(1S)-(+)-3-Carene		Nerol	
alpha-Terpinene		Geraniol	
Ocimere Peak 1	307.45	(+)-Pulegone	
(R)-(+)-Limonene	413.43	Geranyl Acetate	
Ocimere Peak 2		alpha-Cedrene	
Eucalyptol	500.00	trans-Caryophyllene	11243.79
gamma-Terpinene		alpha-Humulene	3906.83
Sabinene Hydrate		Valencene	1006.60
Terpinolene		cis-Nerolidol	
Linalool		trans-Nerolidol	565.22
(+)-Fenchone & L(-)-Fenchone		Guaiol	1062.89
(1R)-Endo-(+)-Fenchyl	460.40	(-)-Caryophyllene Oxide	4048.14
(-)-Isopulegol		(+)-Cedrol	
Camphor & (1S)-(-)-Camphor		(-)-alpha-Bisabolol	2180.90

Reporting Limit is roughly 40 ug/g depending on amount extracted.

Empty result indicates data is less than detection limit.



Altitude Consulting, LLC utilizes NIST traceable Reference Standards and Certified Reference Material to calibrate analytical instruments along with proven analytical methods. The methods are applied in the most ethical manner following good laboratory practice guidelines. The results of this report are based solely on the sample submitted and cannot be reproduced.



Terpenes Profile