

Customer: Appalachian Standard LLC
 Customer Sample ID: Cherry Blossom (RFF)
 Laboratory Number: 19J0414-10



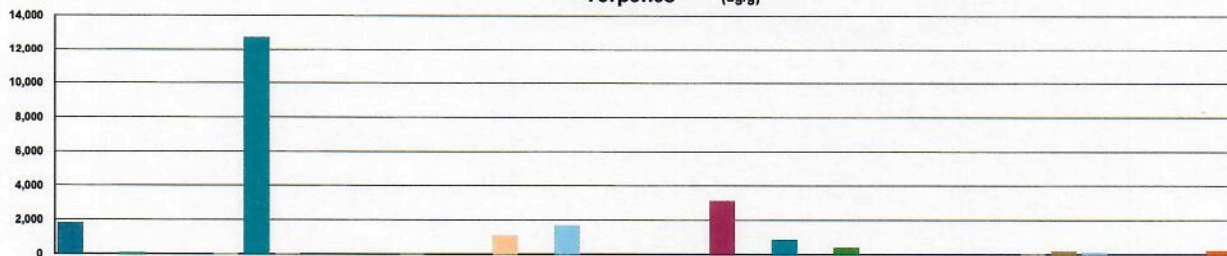
Terpene Profile

Extraction Technician: DF
 Analytical Chemist: GB

Extraction Date(s)	Analysis Date(s)
10/18/2019	10/22/2019

Terpene	Results	Terpene	Results
	ug/g		ug/g
alpha-Pinene	1810	Isoborneol	
Camphene	62.3	Hexahydrothymol	
Sabinene		(+)-Borneol and (-)-Borneol	
beta-Pinene and beta-Myrcene	>12000	alpha-Terpineol	36.1
p-Mentha-1,5-diene		gamma-Terpineol	
(1S)-(+)-3-Carene		Nerol	
alpha-Terpinene		Geraniol	
Ocimene Peak 1	1110	(+)-Pulegone	
(R) - (+)-Limonene	1700	Geranyl Acetate	
Ocimene Peak 2		alpha-Cedrene	
Eucalyptol (1,8-Cineole)		trans-Caryophyllene	3120
gamma-Terpinene		alpha-Humulene	871
Sabinene Hydrate		Valencene	401
Terpinolene		cis-Nerolidol	
Linalool		trans-Nerolidol	
(+)-Fenchone and L(-)-Fenchone		Guaiol	20.6
(1R)-Endo-(+)-Fenchyl	180	(-)-Caryophyllene Oxide	153
(-)-Isopulegol		(+)-Cedrol	
Camphor and (1S)-(-)-Camphor		(-)-alpha-Bisabolol (Levomenol)	226

Terpenes (ug/g)



- | | | | |
|------------------------------|--------------------------------|-----------------------------|---------------------------------|
| alpha-Pinene | Eucalyptol (1,8-Cineole) | Hexahydrothymol | alpha-Humulene |
| Camphene | gamma-Terpinene | (+)-Borneol and (-)-Borneol | Valencene |
| Sabinene | Sabinene Hydrate | alpha-Terpineol | cis-Nerolidol |
| beta-Pinene and beta-Myrcene | Terpinolene | gamma-Terpineol | trans-Nerolidol |
| p-Mentha-1,5-diene | Linalool | Nerol | Guaiol |
| (1S)-(+)-3-Carene | (+)-Fenchone and L(-)-Fenchone | Geraniol | (-)-Caryophyllene Oxide |
| alpha-Terpinene | (1R)-Endo-(+)-Fenchyl | (+)-Pulegone | (+)-Cedrol |
| Ocimene Peak 1 | (-)-Isopulegol | Geranyl Acetate | (-)-alpha-Bisabolol (Levomenol) |
| (R) - (+)-Limonene | Camphor and (1S)-(-)-Camphor | alpha-Cedrene | |
| Ocimene Peak 2 | Isoborneol | trans-Caryophyllene | |

Reporting limit is roughly 40 ug/g depending on amount extracted.