

AUTEL
ROBOTICS

EVO II Enterprise V3

COMPACT, VERSATILE, POWERFUL



Compact, Versatile, Powerful

EVO II Enterprise V3 integrates a superior imaging system, an upgraded 15km image transmission (SkyLink 2.0) and additional accessories in order to meet different aerial needs including inspection, search and rescue, law enforcement, fire fighting, and more. The foldable design empowers industry users with an efficient and portable aerial work tool.



SkyLink 2.0
Transmission



360° Obstacle
Avoidance



Moonlight
Algorithm 2.0



Modular
Accessories



Centimeter-level
Positioning with RTK

ADS-B

ADS-B Signal
Receiver

EVO II 640T Enterprise V3

640x512 30Hz Thermal Imaging Sensor

Equipped with 640*512 high-resolution thermal imaging camera featuring a 13mm focal length lens and 16x digital zoom, it is easy to observe distant targets. The system uses a new image processing algorithm, making thermal imaging details clearer and more discernible than competition with the similar resolution and hardware.

.8" RYYB CMOS Sensor

Equipped with a .8" RYYB CMOS sensor, featuring moonlight algorithm 2.0 that provides excellent noise suppression in limited lighting conditions, further enhancing its 50 megapixel camera to give users more details for better forensics and analysis. Detect, identify, classify subjects in low light situations and proceed with certainty.





EVO II Pro Enterprise V3

All New 6K 1" CMOS Camera

See clearer with Sony's new 20 megapixel 1 inch CMOS image sensor, the EVO II Pro Enterprise V3 supports up to 6K video resolution with greater dynamic range, stronger noise suppression, and higher frame rates.

Aperture Range of F2.8 to F11

The lens's adjustable aperture range of f2.8 to f11 and a maximum ISO of 44000 enables the photographer to enhance their control and creative freedom.



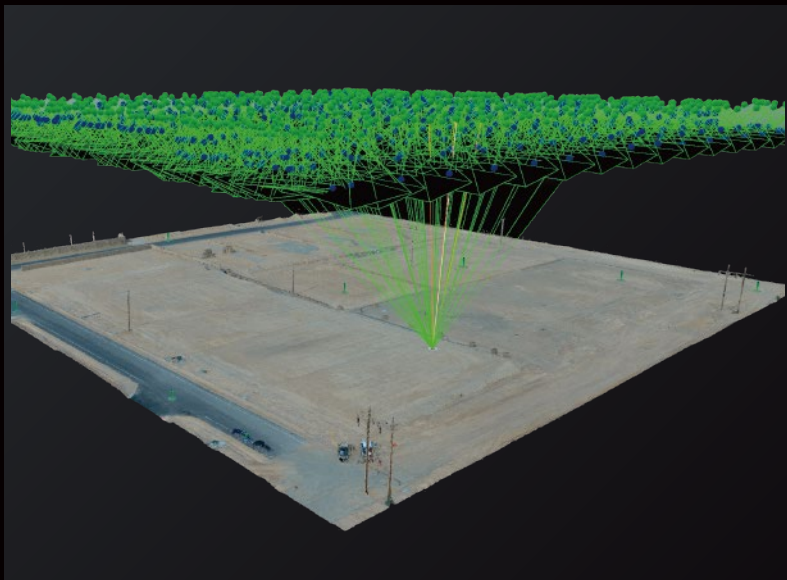
Excel in Low Light

EVO II Pro Enterprise V3 brings you Autel's Moonlight Algorithmn 2.0 with additional noise reduction processing. Paired with V3's upgraded CMOS, succeed in operations with minimal lighting or in harsh lighting situations at night.



Zoom in for the Details

EVO II Pro Enterprise V3 supports 3x lossless zoom and 16 times digital zoom. Obtain clear intel from farther away without suspicion.



Accident Reconstruction

EVO II Pro Enterprise V3 is excellent for rapid accident reconstruction with built in mission planning, and is compatible with Pix4d, Drone Deploy and Skybrowser.



Greater Dynamic Range with 4K HDR

4K HDR offers greater detail in highlights and shadows, providing higher- quality images from the most demanding environments.

Multiple Temperature Measurement Modes



Spot Temperature Measurement

Displays the temperature of a selected object with just a tap of the screen.



Regional Temperature Measurement

Displays the maximum, minimum, and average temperature of a selected area.



Central Temperature Measurement

Displays the temperature in the center area of the screen.



Temperature Alarm

Alerts the user when the temperature of an area reaches a predetermined threshold.



Isotherm

Detects any objects within a specified temperature range.

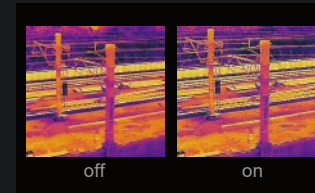


Image Enhancement

Allows the user to adjust image brightness, contrast, and image details in real time.

Zoom in From Safety

EVO II Dual 640T Enterprise V3 supports 4x lossless zoom and 16 times digital zoom. Obtain clear intel from farther away without suspicion.

16X

Digital Zoom





SkyLink 2.0

The EVO II Enterprise V3 is upgraded with Autel's all new SkyLink 2.0 Video Transmission technology.

15KM

Fly farther with HD video transmission up to 15km.

QHD

Obtain critical details with QHD video within 1km.

2.4G/5.8G/900MHZ

Support tri-band communication and can automatically frequency hop for maximum anti-interference capability.



*900MHz frequency band is only applicable for FCC countries.

Dedicated Enterprise Airframe



42 Minutes of Flight Time

Large propellers and revised flight algorithms gives the EVO II Enterprise V3 the longest flight time in its category.



Extended Thermal Vents

EVO II Enterprise V3 has additional thermal vents for additional heat dissipation, prolonging battery life.



Longer Carbon Fiber Arms

Carbon fiber arms and longer propellers provide additional rigidity and flight stability to the EVO II Enterprise platform.

360° Obstacle Avoidance

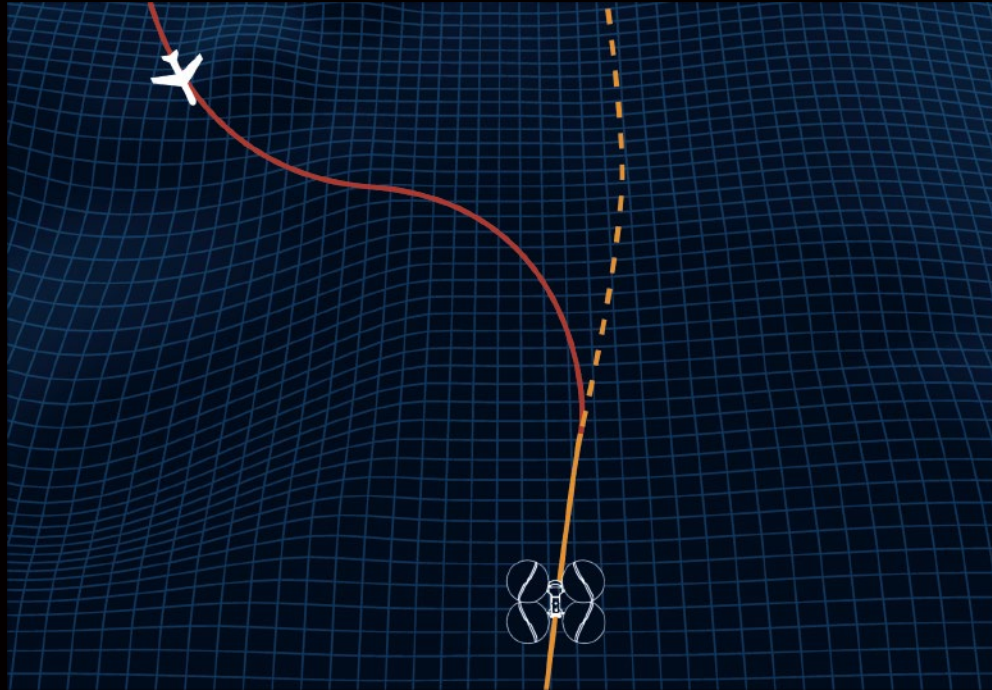
Equipped with 12 visual optical sensors, which integrates 19 sets of sensors including the main camera, ultrasonic wave, and IMU to build a 3D map of the drone and its surroundings in real time. The sensors are strategically placed to minimize blindspots on the drone so V3 can automatically stop near obstacles.



*Please refer to the manual for details on obstacle avoidance and its limitations, which may or may not work in limited lighting environments, under direct strong sunlight, or across thin tree branches or wires.

ADS-B Receiver

Detects the presence of any manned aircraft nearby emitting an ADS-B signal, giving the operator enough time to take evasive measures to avoid mid-air collisions.



Mission Versatility

With an expanded selection of accessories at its disposal, the EVO II Enterprise V3 can evolve from a simple imaging tool to a multifunctional flight platform that can adapt to different scenarios.



Loudspeaker

Enables effective on-site communication through long-distance live broadcasts and prerecorded audio loops.



Spotlight

Beams a powerful, long-distance aerial light when searching or shooting at night.



Strobe

Indicate the location of the aircraft at night to avoid air traffic accidents. Compliant with FAA regulations for night flying, visible over 3 Miles away.



RTK Module (Optional)

Provides centimeter-accurate positioning data for mapping and reduces electromagnetic interference for flying near critical structures.

Autel Smart Controller V3

Smart Controller V3's 7.9-inch, 2000nit high-brightness screen is clearly visible even under direct sunlight. SkyLink 2.0 Transmission technology guarantees long-distance operations from up to 15km away and enhances anti-interference abilities with triple band frequency hopping. The customized Android system allows for additional flexibility with 3rd party apps and an IP43 rating ensures all weather performance.



**7.9-Inch
HD Touch Screen**



**-20°C to 40°C
Temperature Range**



**2000nit
Maximum Brightness**



IP43 Resistance



Broadcast with Live Deck 2

Broadcast live mission intel to other personnel in the operation for enhanced situational awareness and critical decision making. The EVO II Enterprise V3 is compatible with Live Deck 2, which offer multiport streaming to monitors and Wifi support for multiple smart phones.



**1080P/60FPS
Video Stream**



**Three
Auto-Switch Bands**



**12KM
Transmission Range**



IP43 Resistance

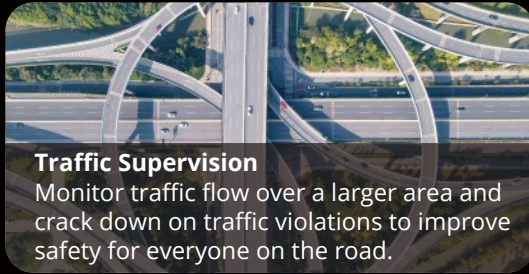


Applications



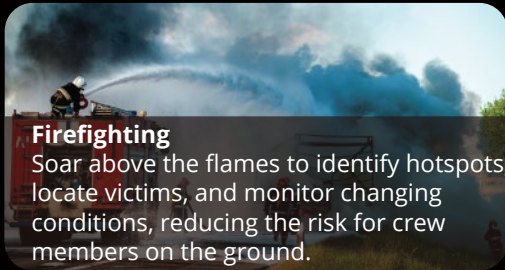
Public Safety

Assess threats from a safe distance, patrol an area during an investigation, or gather intelligence.



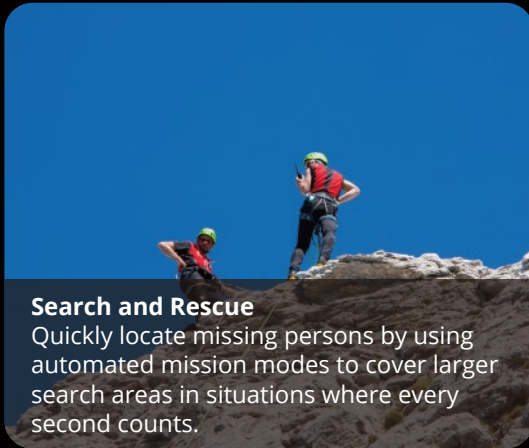
Traffic Supervision

Monitor traffic flow over a larger area and crack down on traffic violations to improve safety for everyone on the road.



Firefighting

Soar above the flames to identify hotspots, locate victims, and monitor changing conditions, reducing the risk for crew members on the ground.



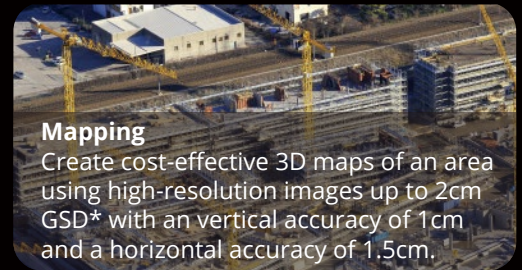
Search and Rescue

Quickly locate missing persons by using automated mission modes to cover larger search areas in situations where every second counts.



Power Inspection

Zip between transmission towers to quickly spot structural damage or overheating electrical elements, saving time and labor costs.



Mapping

Create cost-effective 3D maps of an area using high-resolution images up to 2cm GSD* with a vertical accuracy of 1cm and a horizontal accuracy of 1.5cm.

Specifications

Aircraft

Takeoff Weight (Without Accessories)	EVO II Pro Enterprise V3: 2.45lbs (1110g) EVO II Dual 640T Enterprise V3: 2.51lbs (1136.5g)
Diagonal Length	16.8in (427mm)
Max Flight Time (No Wind)	42min (without accessories) ; 38min (with strobe) ; 29min (with spotlight) 34min (with loudspeaker) ; 36min (with RTK module)
Operating Temperature	14°F to 104°F (-10°C to 40°C)
Wind Resistance	39mph (17m/s)
Hovering Accuracy Range	Vertical: ± 0.3ft (0.1m) (with RTK); ± 0.3ft (0.1m) (with vision positioning) ± 1.6ft (0.5m) (with GPS positioning) Horizontal: ± 0.3ft (0.1m) (with RTK); ± 0.9ft (0.3m) (with vision positioning) ± 4.9ft (1.5m) (with GPS positioning)

RC and Image Transmission

Max Transmission Distance (Unobstructed, Free of Interference)	FCC: 15km CE: 8km
Display Screen	2048x1536 60fps
Operating Time	~3hours (max. brightness); ~4.5hours (50% brightness)
Charging Time	120minutes
Internal Storage	ROM 128GB

EVO II Pro Enterprise V3 Camera

Sensor	1 inch CMOS; 20M pixels
Lens	FOV: 82°; 35mm format equivalent focal length: 29mm; Aperture: f/2.8 - f/11; Focus range: 0.5m to infinity
ISO Range	Video: 100-44000; Photo: 100-6400
Zoom	1-16x (up to 3x lossless zoom)
Maximum Photo Size	5472*3648 (3:2); 5472*3076 (16:9); 3840*2160 (16:9)
Photo Mode	5472x3076P30/P25/P24 3840x2160P60/P50/P48/P30/P25/P24 2720x1528P60/P50/P48/P30/P25/P24 1920x1080P60/P50/P48/P30/P25/P24

EVO II Dual 640T Enterprise V3 Visual Camera

Sensor	1/1.28"(0.8") CMOS; 50M effective pixels
Lens	FOV: 85°; 35mm format equivalent focal length: 23 mm; Aperture: f/1.9; Focus range: 0.5m to infinity (with auto focus)
ISO Range	Video: 100-64000; Photo: 100-6400
Zoom	1-16x (up to 4x lossless zoom)
Maximum Photo Size	8192*6144 (4:3); 4096*3072 (4:3); 3840x2160 (16:9)
Video Resolution	3840x2160P60/P50/P48/P30/P25/P24 2720x1528P60/P50/P48/P30/P25/P24 1920x1080P60/P50/P48/P30/P25/P24

EVO II Dual 640T Enterprise V3 Thermal Camera

Lens	FOV H33°V26°; Focal length 13mm
Zoom	1-16x
Wavelength Range	8~14μm
Temperature Measurement Accuracy	±3°C or ±3% of reading (whichever is greater) @Environmental temperature-20°C~60°C
Accurate Temperature Measurement Distance	2-20meters
Video Resolution	640x512@30fps
Photo Resolution	Infrared mode: 640*512 ; Picture-in-picture mode: 1920*1080, 1280*720

Accessories

Loudspeaker	Power: max. 18W Decibel: 120dB @ 1m; 88dB @ 60m; 70dB @ 110m Max bitrate: 36kbps Adjustable angle range: 0°~45°
Strobe	Power: avg. 1.6W Controllable range: 5000m Light intensity: min. 50cd; max. 486cd; avg. 290cd
Spotlight	Power: max. 35W Controllable range: 30m Adjustable angle range: 0°~90° Illuminance: FOV14°, max. 11lux @ 30m straight



www.autelrobotics.com