

EVO Max 4T

QUICK START GUIDE

快速指引

快速入門指南

クイックスタートガイド

빠른 시작 가이드

GUIDE DE DÉMARRAGE RAPIDE

SCHNELLSTARTANLEITUNG

GUIDA RAPIDA

GUÍA DE INICIO RÁPIDO

SKRÓCONA INSTRUKCJA OBSŁUGI

КРАТКОЕ РУКОВОДСТВО ПО НАЧАЛУ РАБОТЫ

СТИСЛЕ КЕРІВНИЦТВО КОРИСТУВАЧА

GUIA DE INÍCIO RÁPIDO

More About EVO Max 4T

EN

Scan the QR code or visit:



①

① Tutorial Videos

<https://www.autelrobotics.com/article/135.html>

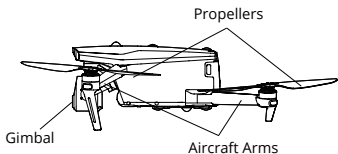


②

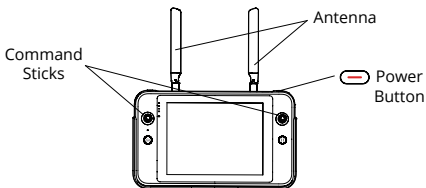
② Manuals: Disclaimer and Safety Operation Guidelines, Battery Safety Operation Guidelines, User Manual

<https://www.autelrobotics.com/download/542.html>

EVO Max 4T Aircraft

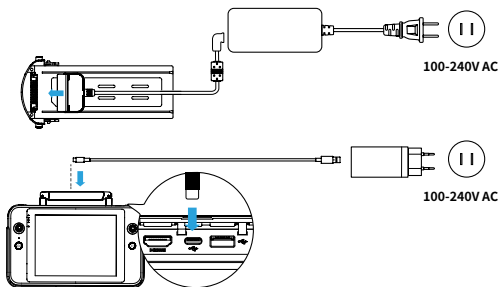


Smart Controller



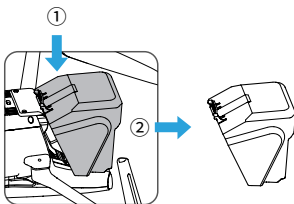
1 Charge the Battery

For first-time use, please charge and activate the aircraft battery and the integrated battery of remote controller.

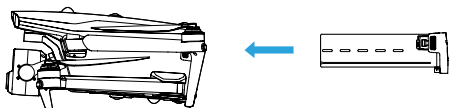


2 Set Up the Aircraft

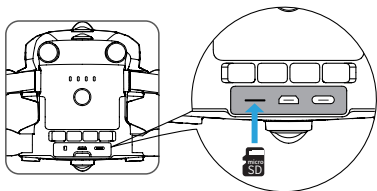
Press and hold the slot to remove the gimbal Cover



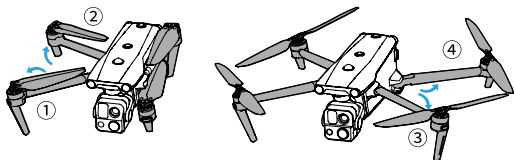
Insert the battery into the aircraft



Insert the micro SD card to the rear part of the aircraft

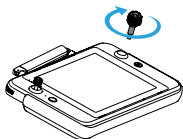
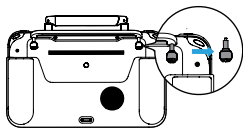


Unfold the aircraft arms in order

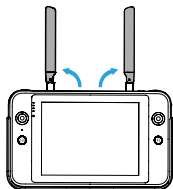


3 Set Up the Remote Controller

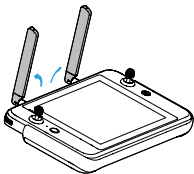
Install the Control Sticks



Unfold the Antenna

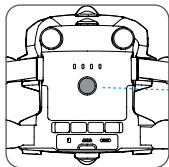


Or



4 Prepare for the Flight

Power on aircraft

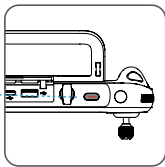


①

Press and hold
for 2 seconds



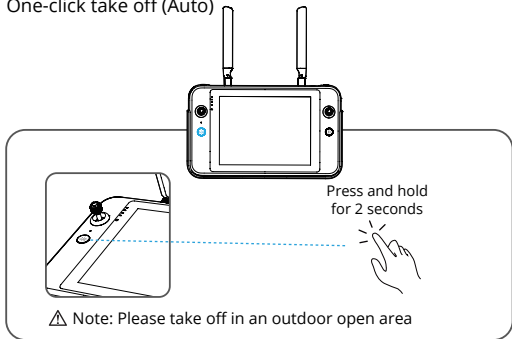
Power on
remote controller



②

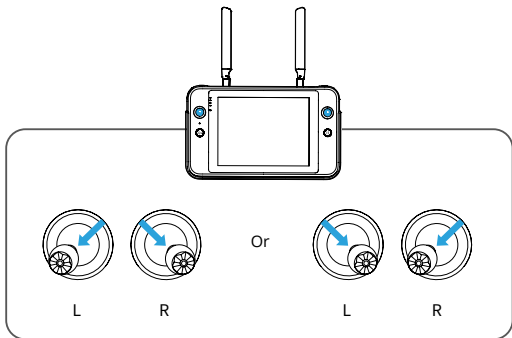
5 Fly

One-click take off (Auto)



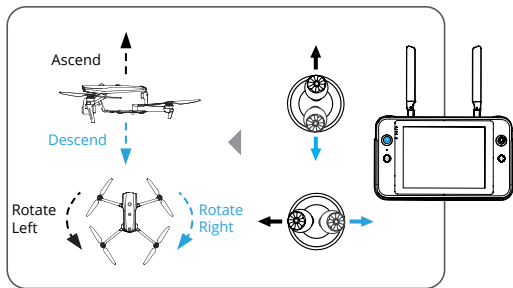
Or

Activate the rotor (Manual)



Control Sticks Operation (Mode 2)

Left Control Stick



Right Control Stick

