

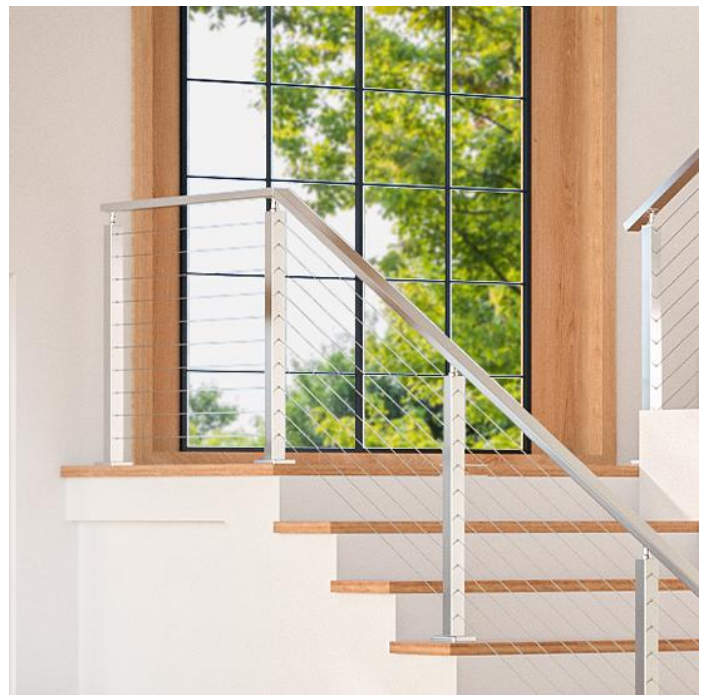
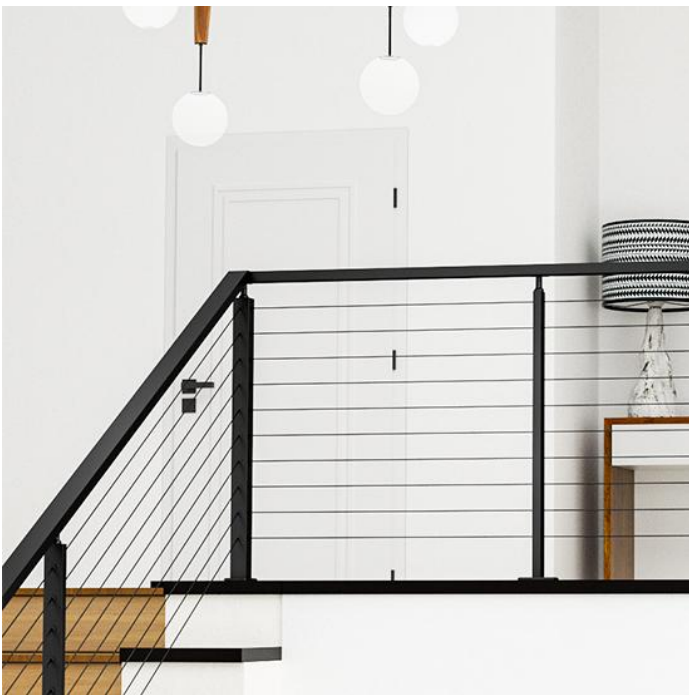


Pre-drilled Handrail HT14 User Guide

1. Overview

Muzata has upgraded its stainless steel flat handrail with pre-drilled holes to save your trouble of self-drilling. Original one-piece POM handrail connector is replaced by a split aluminum connector, hoping to reduce the difficulty of installation. In addition, to improve user experience, we have equipped all the accessories required for handrail installation in the package.

2. Specifications



Name	Model	Material	Length	Finish
6'6" Brushed Pre-drilled Stainless Steel Handrail Kit	HT14 SL4	T304 stainless steel	6'6"	Brushed finish
6'6" Black Pre-drilled Stainless Steel Handrail Kit	HT14 BP4	T304 stainless steel	6'6"	Black powder coated

3. Items related

(1) Package includes

For your convenience, we have provided a list of items included in the handrail packaging below.

① 6'6" Brushed Pre-drilled Stainless Steel Handrail Kit



② 6'6" Black Pre-drilled Stainless Steel Handrail Kit

1



Pre-drilled handrail T304 stainless steel

2



Aluminum handrail connector base

3



Aluminum handrail connector cover

4



Set screw

5



Machine screw

6



End cap

7



Allen wrench

8



Hole plug 4.5mm

9



Hole plug 6.1mm

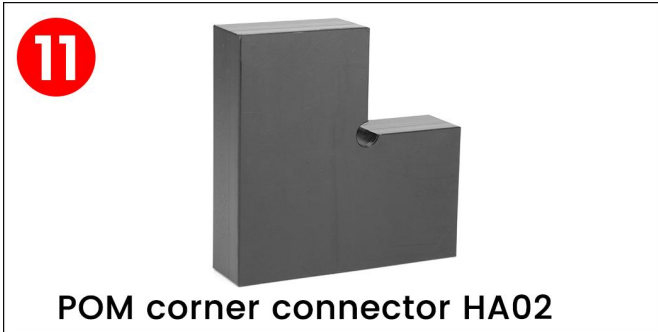
10



Gap cover

(2) Accessories related

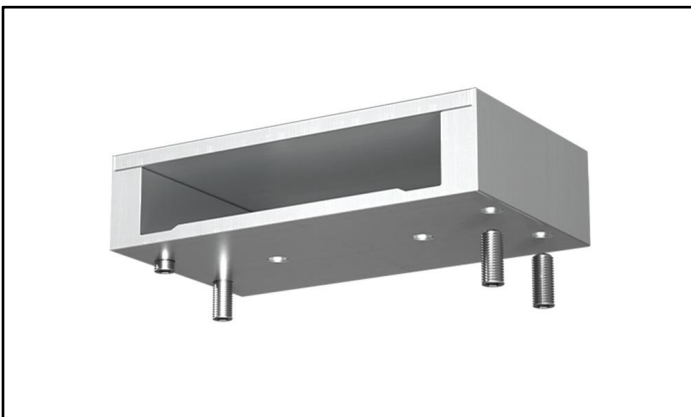
Please note that accessories listed below may be required but are not included in the package. If needed, they can be purchased separately.



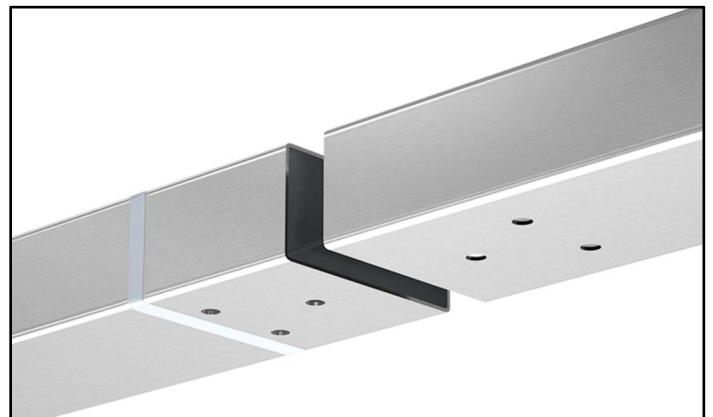
4. Installation Steps

4.1 Straight connection

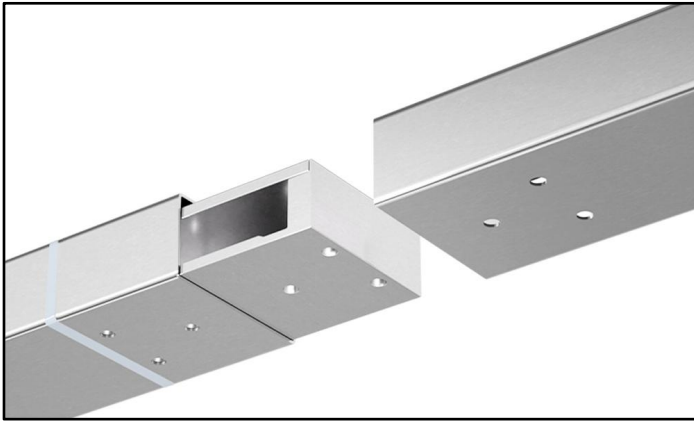
(1) Install the handrails



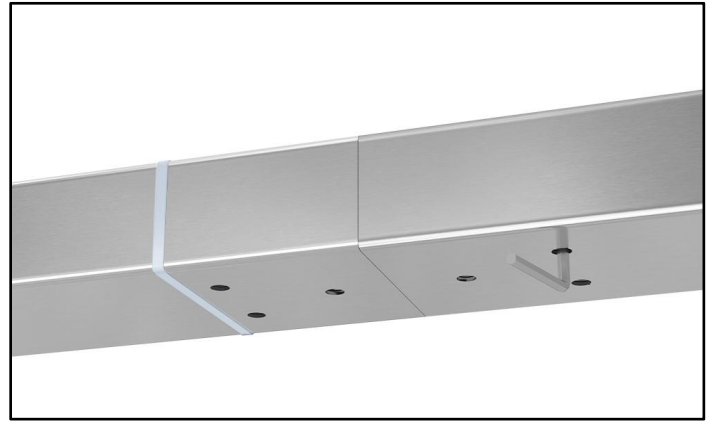
Step 1 - Cover the connector cover **3** onto the base **2** and screw the set screws **4** into the base.



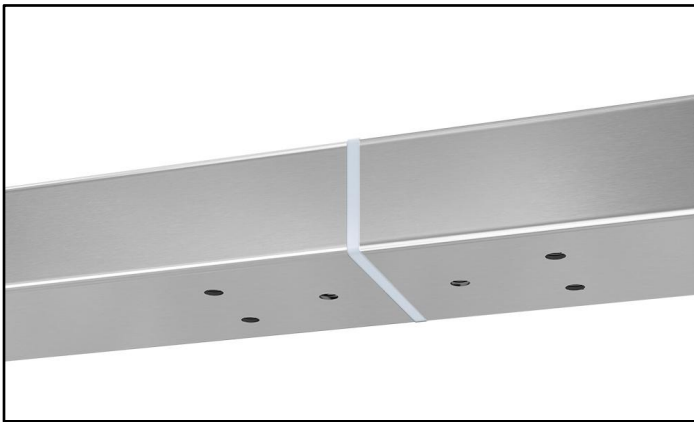
Step 2 - Insert the gap cover **10** into one of the handrail **1**. (Use when the handrail **1** is unevenly cut.)



Step 3 - Insert the connector **2** **3** and align it with the holes on the handrails **1**.



Step 4 - Tighten the set screws **4** until the connector **2** **3** is completely tapped in handrails **1**.



Step 5 - Cover the cutting area with gap cover **10** if the edge is not smooth.

(2) Install the handrails onto the posts

① With fixed top posts

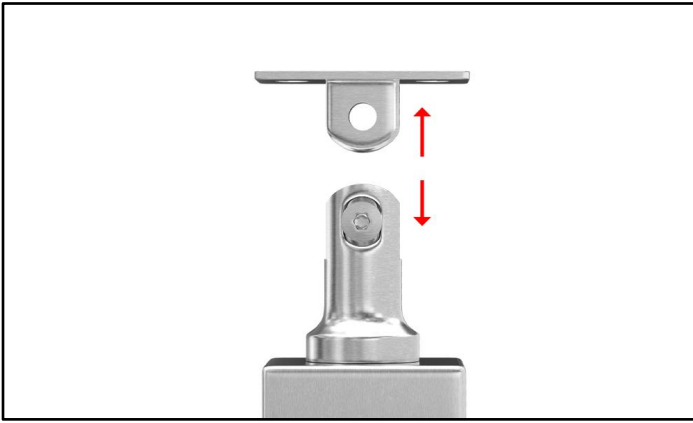


Step 1 - Place the installed handrails **1** onto the post and align it with the holes.

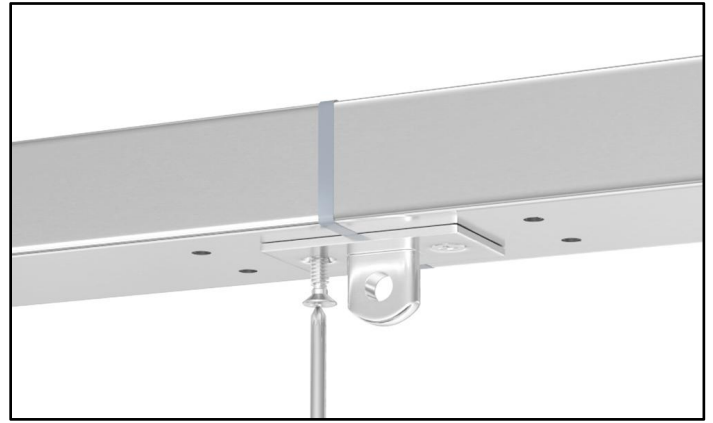


Step 2 - Install the machine screws **5**.

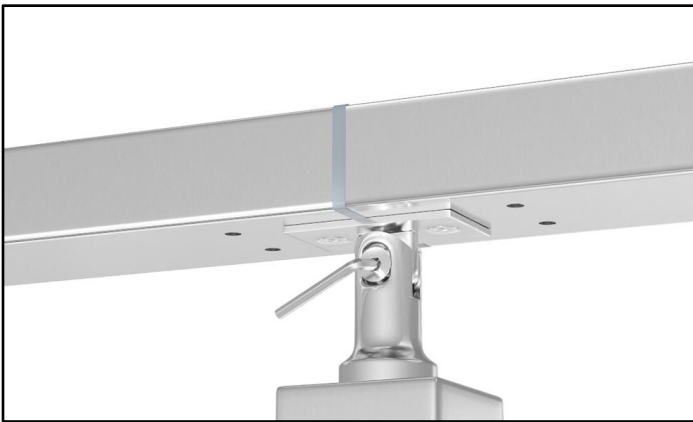
② With adjustable top posts



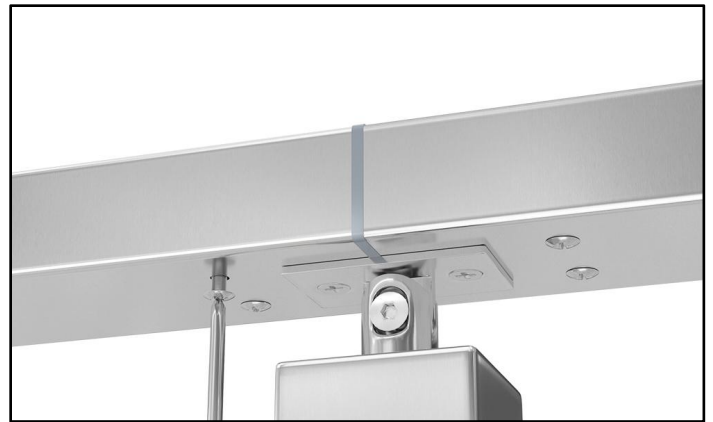
Step 1 - Remove the adjustable bracket from the base.



Step 2 - Connect the adjustable bracket to the handrail **1**.



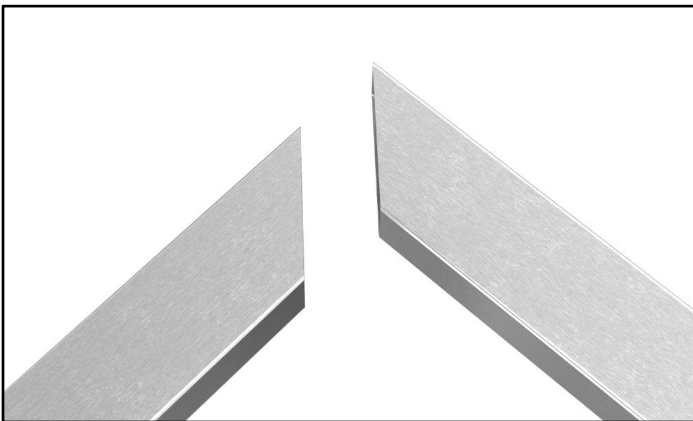
Step 3 - Place the installed handrails **1** onto the bracket with holes aligned and tighten the screws **12**.



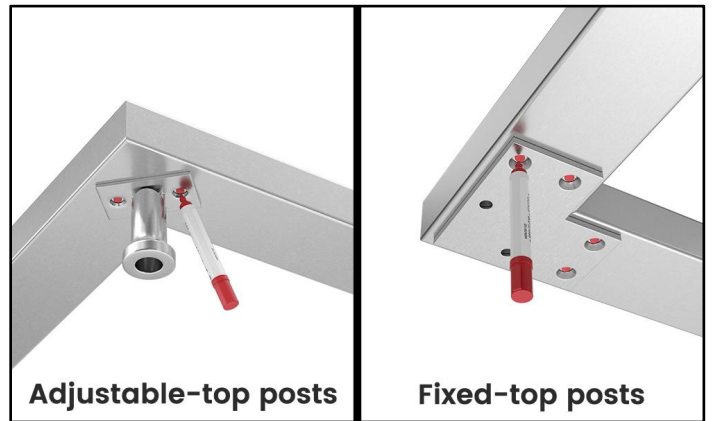
Step 4 - Install the machine screws **5**.

4.2 Corner connection

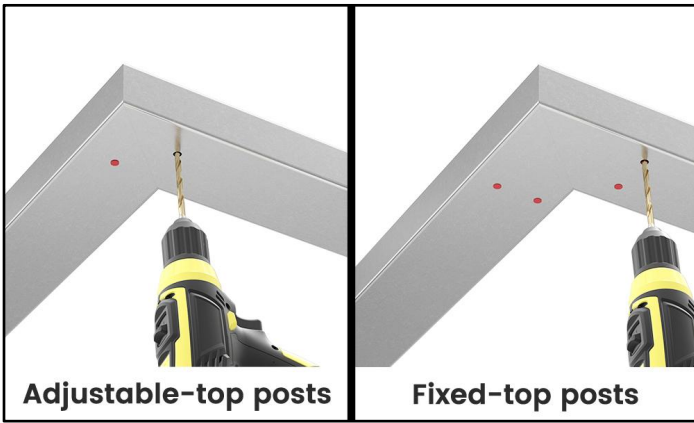
(1) Install the handrails



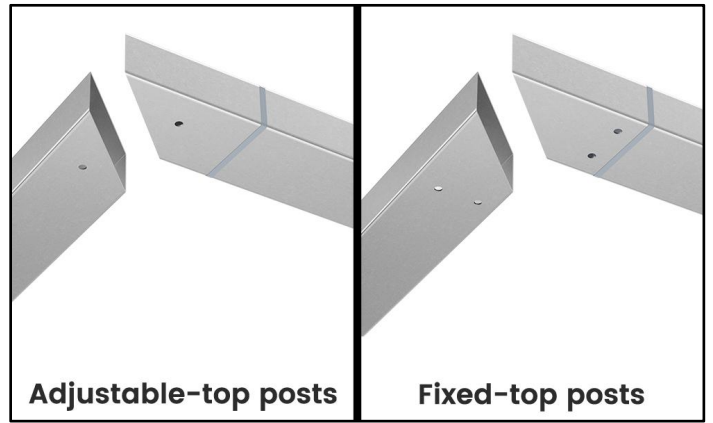
Step 1 - Cut the two handrails **1** at a 45° angle.



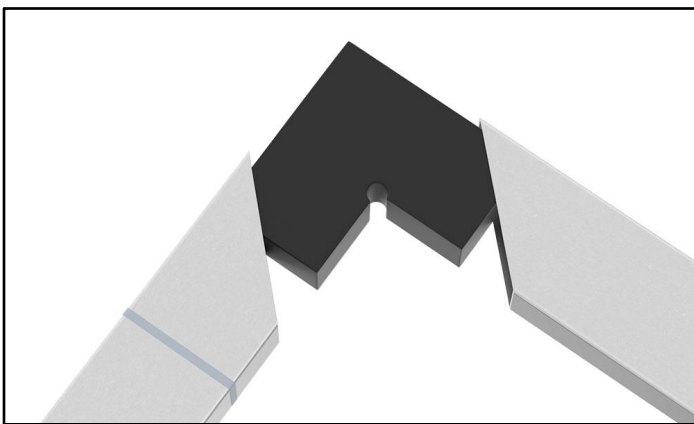
Step 2 - Mark the handrail **1** according to the bracket hole positions.



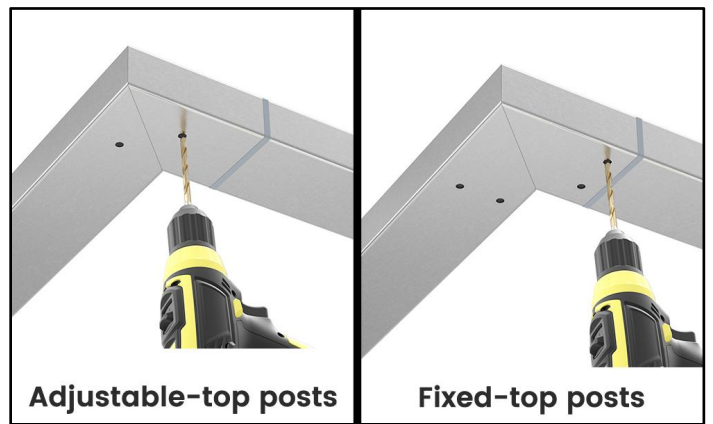
Step 3 - Drill holes with a 13/64" **13** drill bit at the marked positions.



Step 4 - Insert the gap cover **10** on one of the handrails **1**. (Use when the handrail is unevenly cut.)



Step 5 - Connect the two handrails **1** with corner connector **11**.



Step 6 - Drill holes in corner connector **11** with a 5/32" drill bit **14** according to the hole locations drilled in step 3.



Step 7 - Cover the cutting area with gap cover **10** if the edge is not smooth.

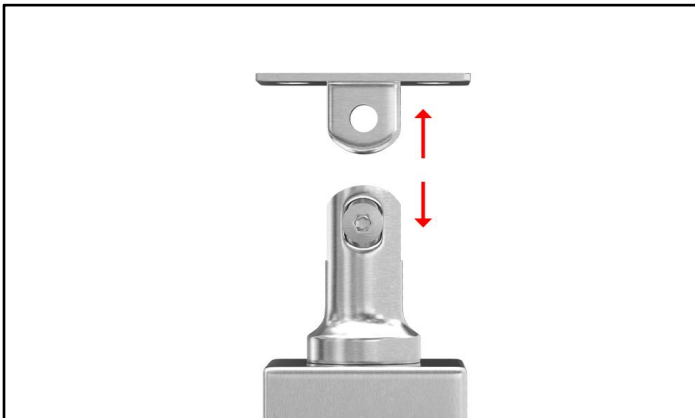
(2) Install the handrails onto the posts

① With fixed top posts



Step 1 - Install the handrail **1** onto the post bracket with M5x20mm self-tapping screws **12**.

② With adjustable top posts



Step 1 - Remove the adjustable bracket from the base.

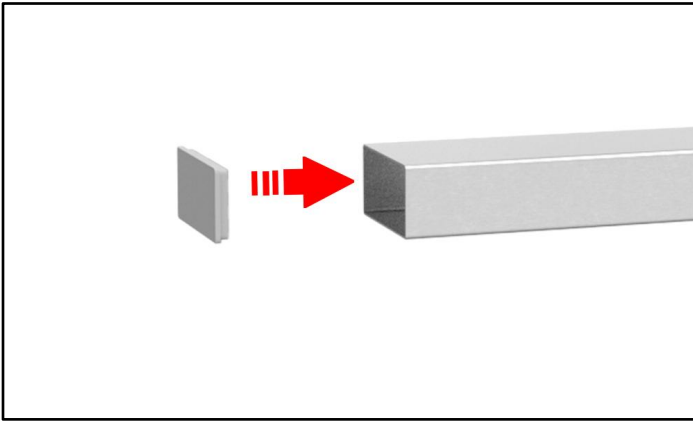


Step 2 - Connect bracket to the handrail **1** with M5x20mm self-tapping screws **12**.



Step 3 - Install the handrail **1** onto the post by tightening the adjustable bracket and bracket base.

(3) Insert the end caps into handrail



(4) Install the cable railing kit and cable runs as sequence



Please note that installation videos are available on our product pages for further details if needed.

5. Tips

- (1) Please make sure set screws are tightened to prevent the connector from sliding.
- (2) The pre-drilled holes of the handrails are specially designed to match Muzata cable railing posts.
- (3) The recommended post spacing between two posts is 3ft-4ft, no more than 4ft. For our 6'6" handrails, it would be best to adopt 3'3" post spacing.
- (4) The overall height of the railing (includes handrail) should be equal or higher than 36" to meet residential building codes of most states. Please consult your local building offices for building codes and make sure the system complies with the codes.
- (5) 3" cable spacing and 200 lbs tension on each cable line are recommended in order to pass the 4" sphere test (required by some states). You can buy a tension gauge online or from local stores.
- (6) Ensure that your posts and handrail are properly installed before you start cable installation.
- (7) You might have to buy a few more materials than expected in case some materials might not be reusable after operation mistakes.
- (8) It is recommended to have the assistance of partners when installing the handrails, since it will be easier to pre-install handrails and then install handrails onto the posts.

6. Free design service

We offer custom cable railing design service for free. If you are a beginner or not sure about how to do it, please reach us. Our experts can do all the planning, designing and budget work for you without extra charging.

7. About Muzata

MUZATA has helped millions of families with their cable railing projects during the past years. We believe that home renovation should be easy and affordable. So we work with every effort to provide quality products and professional service, to make Muzata a reliable brand.