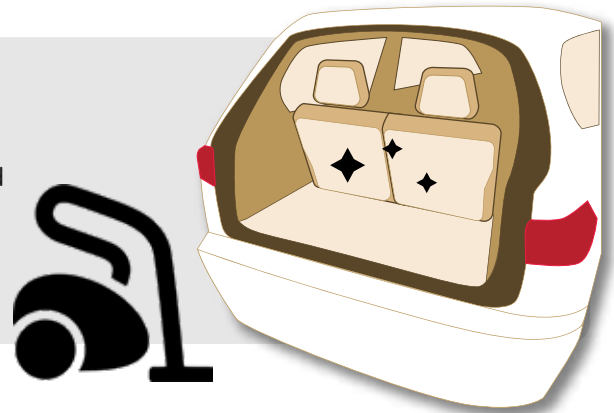


# 01. Clean Surfaces

## Clean Surfaces

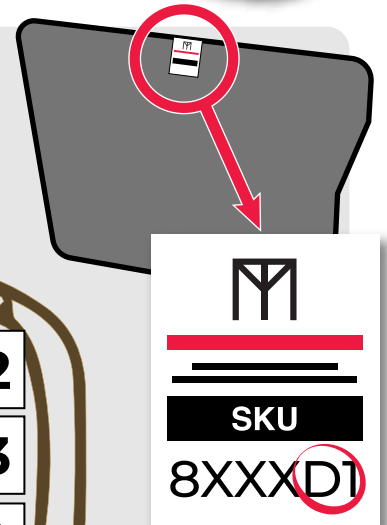
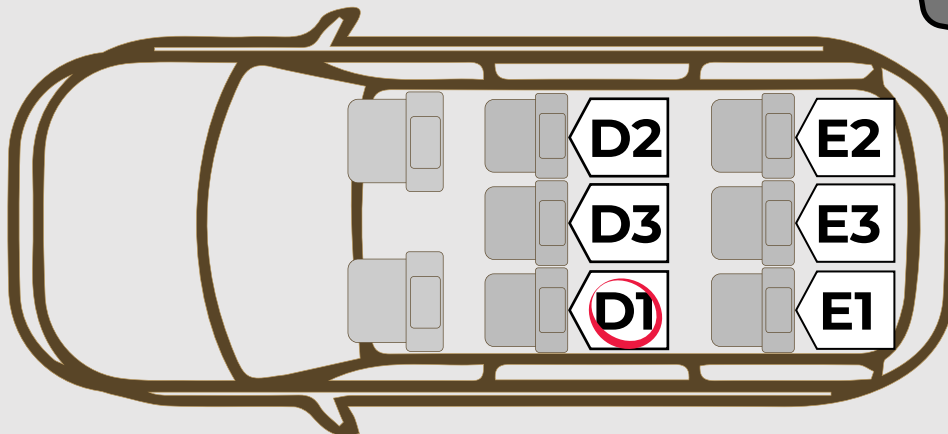
Ensure that seatback surfaces are clean and free of debris prior to installation.



# 02. Determine Locations

## Determine Locations

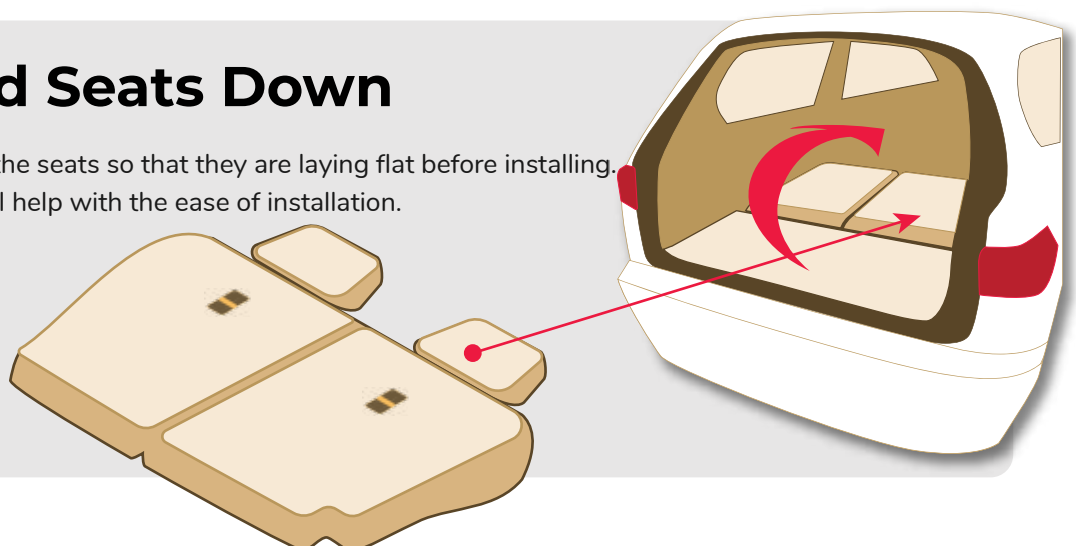
The SKU number on each tag has an identifier for the seatback positions. Review the SKU number to determine their locations.



# 03. Fold Seats Down

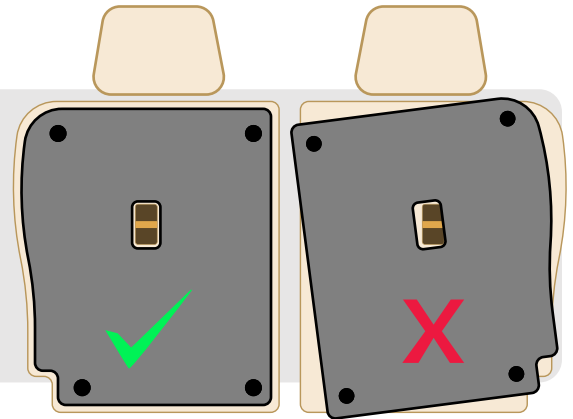
## Fold Seats Down

Adjust the seats so that they are laying flat before installing. This will help with the ease of installation.



### 04. Test Alignment

Lay the mats flat onto the back of the seat. Make sure all cut-outs are aligned and the mat sits perfectly within the seats perimeter.



### 05a. Install Seatback Mats (Vehicle Dependant)

On some vehicle models, the back seat fabric requires an adhesive layer to work with the fasteners on our mats. Please follow these steps if you have the paper backing on the back seat mats. If not, then proceed to Step 05b.

#### 1. Clean Surface

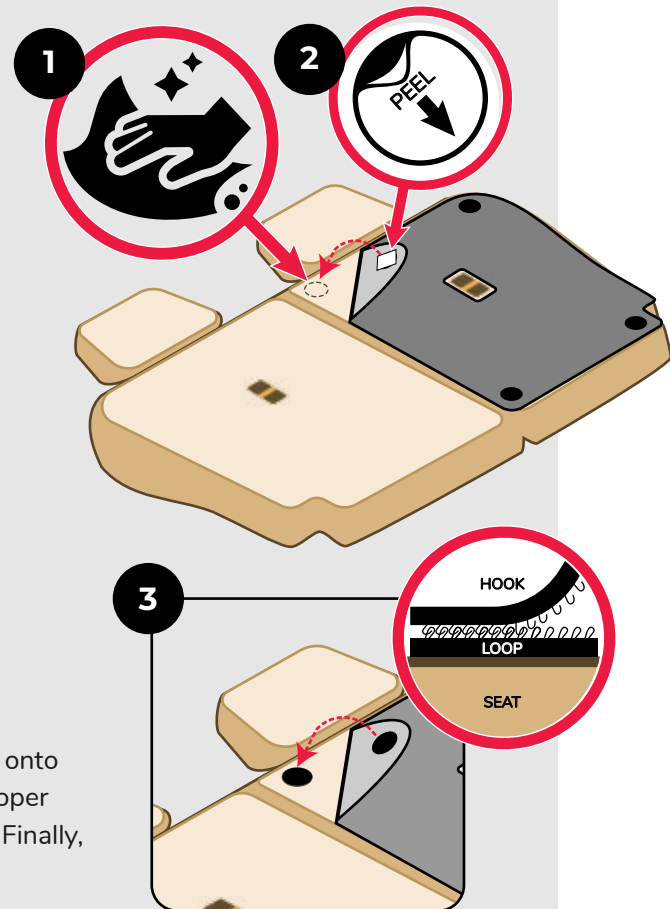
After aligning the mat, use the provided wipes to remove any existing residue or oils from the carpeted install areas.

#### 2. Peel Backing

Peel the white paper off to reveal the adhesive backing.

#### 3. Apply Adhesive

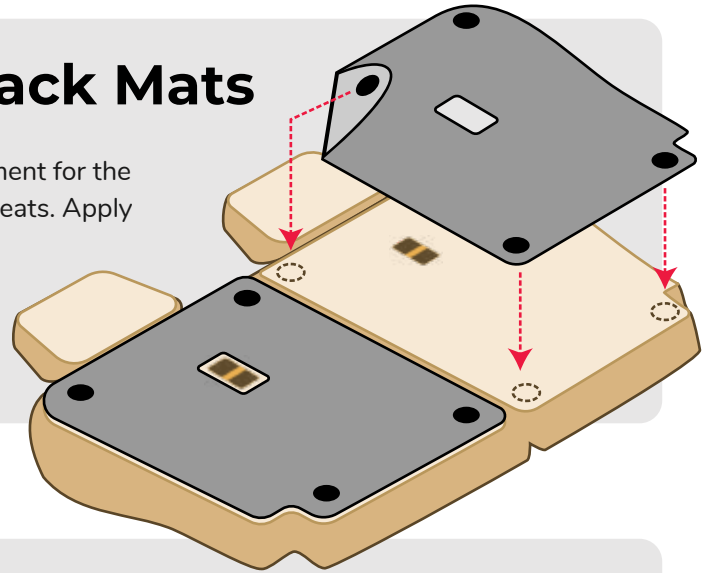
With the mat positioned correctly, apply the exposed adhesive onto the cleaned install areas. Install one area at a time to ensure proper alignment. Apply some pressure on the pucks once confirmed. Finally, allow 24 hours for the adhesive to cure before handling.



Warning: The adhesive backing will create a strong bind and should only be applied once fitment and alignment are confirmed.

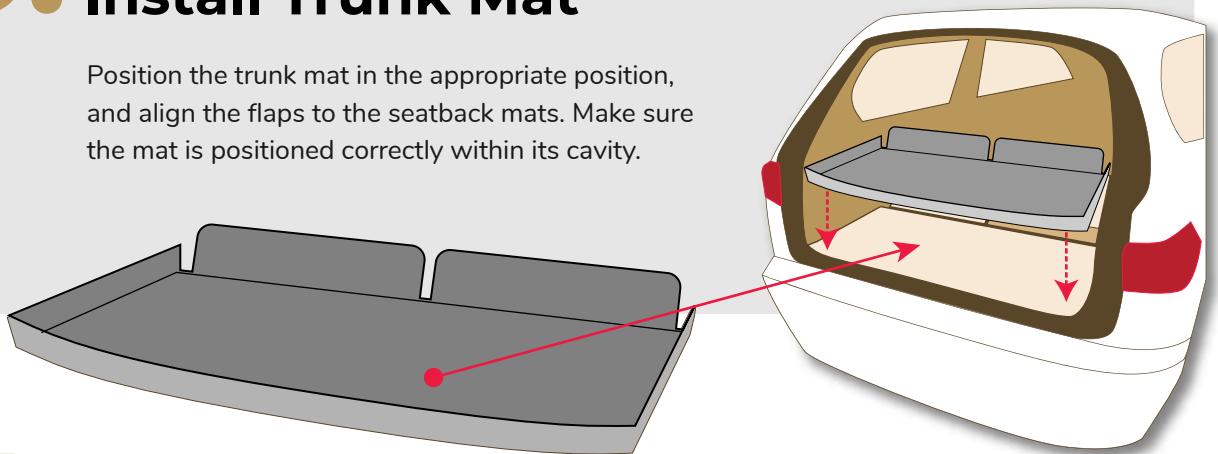
### 05b. Install Seatback Mats

Once you're confident with the alignment for the installation, apply the mats onto the seats. Apply pressure to secure the mat in place.



### 06. Install Trunk Mat

Position the trunk mat in the appropriate position, and align the flaps to the seatback mats. Make sure the mat is positioned correctly within its cavity.



### 07. Test Seat Movement

Adjust the seats back to the original position to ensure there is no interference. If the seatback mats interfere, simply re-adjust to clear seat movement.

