

1 Power It Up

Press the power button 5 times rapidly.

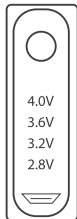
2 Attach Magnetic Collar

Tighten 1 of the 2 included magnetic collars onto the bottom threaded part of the cartridge.

3 Insert Cartridge

4 Adjust Power

If needed, cycle through power settings by pressing the power button 3 times rapidly.



5 Prime It

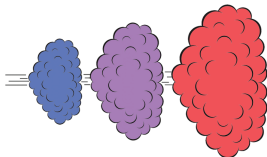
If needed, click button 2 times to enter preheat mode. The voltage lights will change colors slowly for a 15 second heating cycle. (Click button once to exit preheat mode.) Repeat as necessary.

6 Puff It

Hold down the power button and inhale.

Want a bigger vapor cloud?

Adjust the power to a higher setting.



7 Power It Down

Press the power button 5 times rapidly.

Battery Level Indicator

To check the battery level, insert a cartridge into the battery. The voltage lights below the power button will show how much battery is left. (1 light = 25%, 4 lights = 100%)

Charging

Connect the battery to the included micro USB cable and plug it into a standard USB adapter with an output of 5V and 0.5 -1.0A. While the battery is charging the voltage lights blink. Charging is complete when the 4 lights are solid.



Usage Disclaimer

Please READ before use.

Any damage, misuse or modification of this product may cause serious injury.

NEVER leave charging batteries unattended.

NEVER overcharge battery or leave on charger for extended periods of time.

ONLY use with Rove battery charger.

Specifications

Battery Capacity: 650mAh

Output Amps: 3.3A

Atomizer Resistance: 1.5 - 2.0 ohms

Charging Time: 1-2 hours

Charging Limits: 5V @ 0.5A - 1.0A

Battery Type: 16400 Battery

ROVETM PRO

