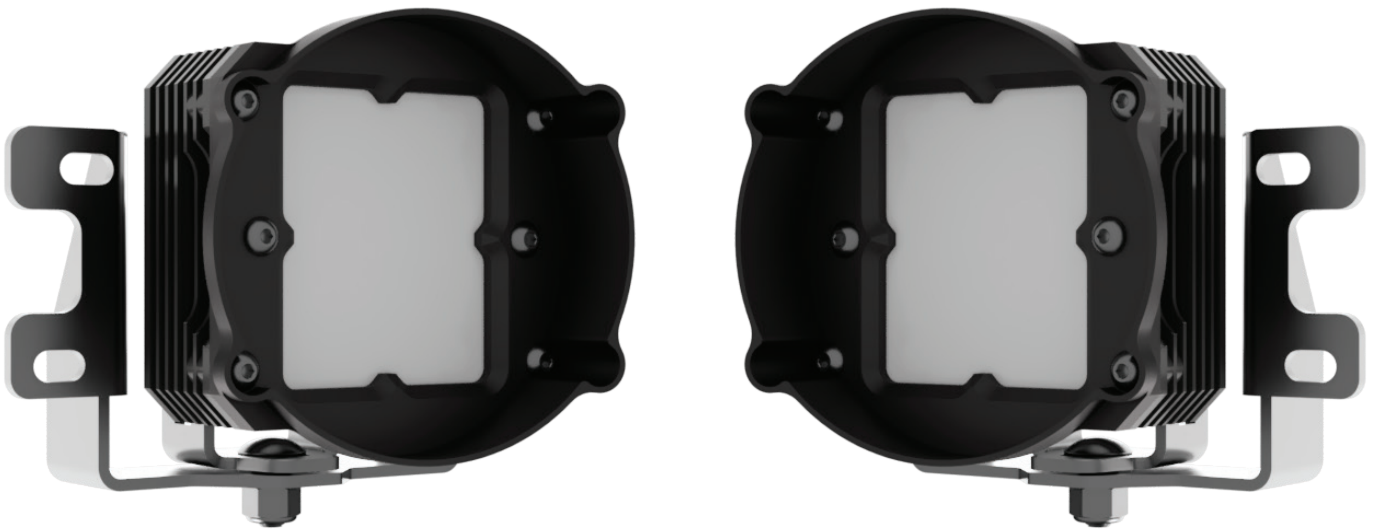


Heretic

BEYOND LUMENS

Toyota Tacoma ('12-'20) Fog Light Installation Instructions



Heretic

1168 West 500 North Suite 500
Centerville UT, 84014
801-725-4824
Support@hereticstudio.com

Heretic

BEYOND LUMENS

Tacoma ('12-'20)

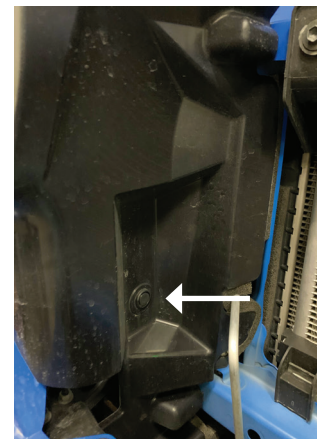
Tools Needed for Install:
Basic tool set

Kit Contents: 2x Light Bracket 2x Washer 2x Zip Tie
2x 1/4 - 20 Carriage Bolt 2x Wire Harness Adapters
2x 1/4 - 20 Nyloc 2X EPDM

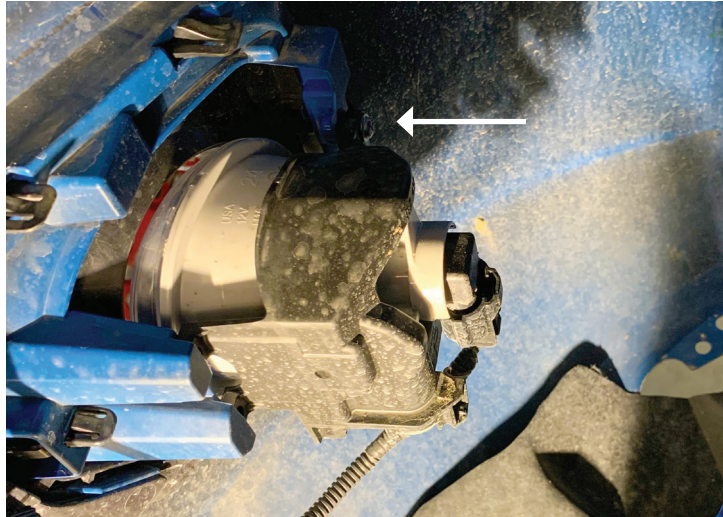
Step 1: Pop the hood and unhook the negative terminal on the battery to prevent accidental short circuits and fault codes from unplugging electrical components. Locate the two 10mm/Philips screws and two plastic retaining clips holding on the grille. Remove the two screws and the two plastic retaining clips.



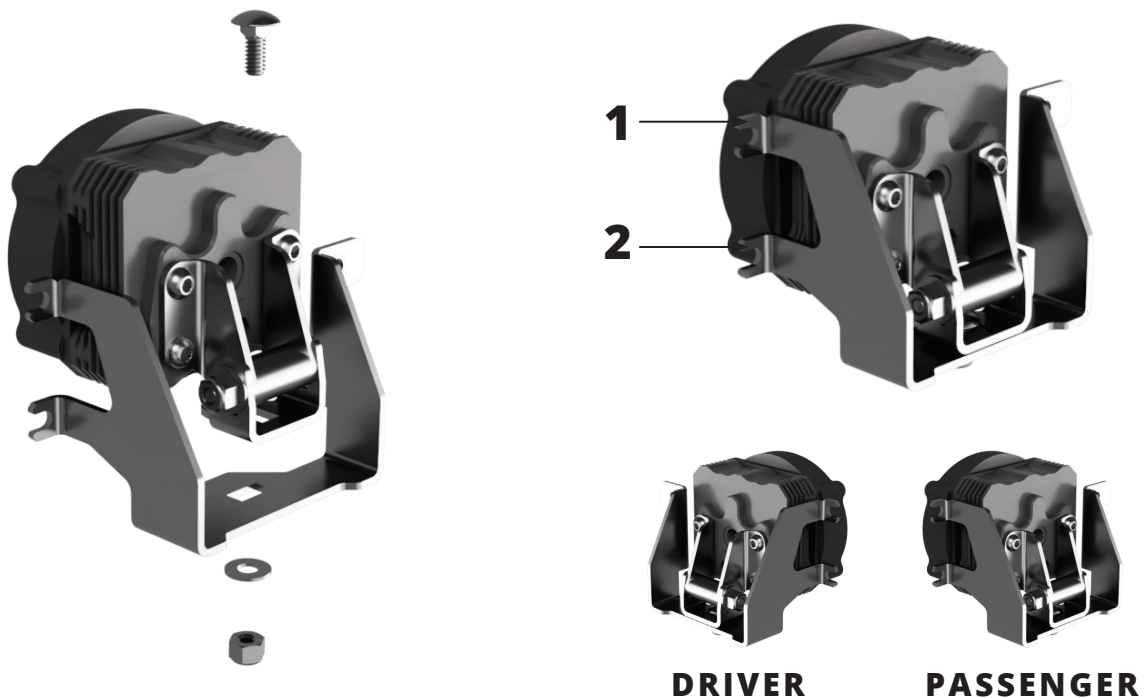
Step 2: To release the grille, pull the grille directly away from the front of the vehicle. Once the grill is removed, place it in a safe location. Locate the plastic retainer clip on the plastic splash guards. Remove the retainer clip and then remove the splash guard on each side. The factory fog light should now be visible.



Step 3: The factory fog light is held in with one Philips head screw located on the light's top exterior side. Remove the screw, unplug the light and place it in a safe location. Take note of how the light is held in our Quattro will mount the same way.



Step 4: To assemble the Quattro, attach the bracket using the supplied carriage bolt, washer and tighten the bolt until it's snug but not fully tight. The kit includes two thicknesses of sticky back EPDM, which is intended to be placed onto the brackets' tabs labeled 1 & 2. For the Tacoma, cut the **THIN** EPDM into $\frac{1}{2}$ " x $\frac{1}{2}$ " squares and place it onto the tabs' backside.



Step 5: Tighten the lights onto the vehicle with the factory screw. While tightening the screw, gently adjust the light assembly to ensure the desired alignment. Use the included H-11 wiring adapters to plug into factory wiring, ensuring the flip-flop connector is in the correct orientation. On most Toyotas, the fog light's **negative wire is a white wire with a black stripe**. The Quattro light wiring goes as follows; red = positive, black = negative.

Heretic tip

Now that the light is almost installed, it is a good idea to make sure the light connector is orientated correctly. If you disconnected any factory electronic devices during the install, reconnect them before connecting the battery. If your Tacoma has a sensor in the front bumper, reconnect the sensor but in a way that allows you to access the light. With the light switch turned on, and the fog light switch turned on, the lights should now light up. If the light does not, check the H-11 connector and, if needed, flip the connector 180 degrees. It is also a good time to check light alignment and make any necessary adjustments to the beam angle. We suggest that the light be turned off while making adjustments and then turned on after to check alignment. This will help prevent any accidental short circuiting.

Step 6: With the Quattro installed, route the wiring, avoiding any hot or moving parts, and use zip ties to keep the wiring in place. Reinstall the removed parts in reverse order, making sure to torque the bolts after driving 100 miles.

Your install is now complete! Thanks for choosing Heretic!



@hereticstudio

Heretic
BEYOND LUMENS

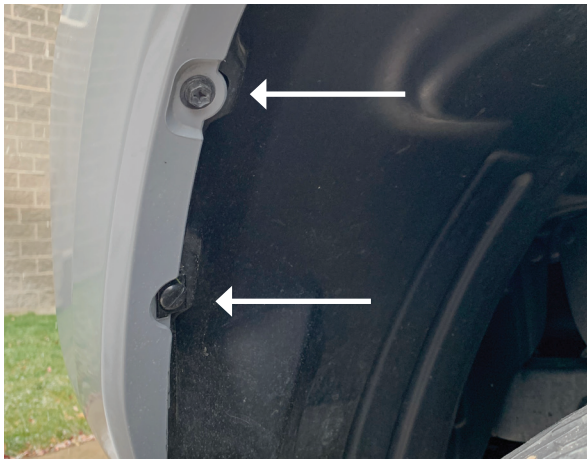
Heretic

1168 West 500 North Suite 500
Centerville UT, 84014
801-725-4824
Support@hereticstudio.com

Heretic

Tacoma ('12-'20) Install Type 2

Step 1: Remove stock fog light by removing the 10 mm screw and pushpin on the outside edge. There will also be one 10 mm screw on the bottom. If equipped, you may want to unscrew the plastic wheel well shroud to gain greater access to the rear of the stock fog light. Depending on vehicle year, there may be a backsplash behind the light, which will need to be removed.



Step 2: Pull the inner fender liner away from the bumper and hold it to the side. This will allow you to see the rear side of the factory fog light. The factory fog light is held in with one Philips head screw located on the light's top exterior side. Remove the screw, unplug the light, and place it in a safe location. Take note of how the light is held in our Quattro will mount the same way.

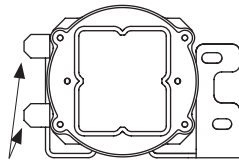
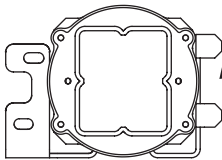
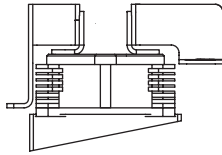
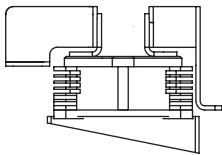


Heretic

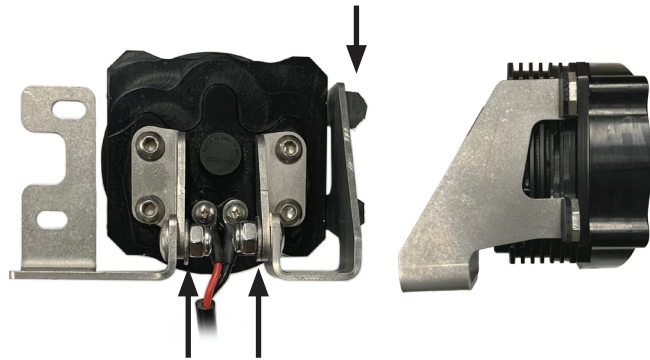
Step 3: Assemble the Quattro. Bolt the brackets onto the Quattro using the ¼-20 carriage bolt and nyloc nut as seen in the picture below, ensuring the angled bezels line up with the driver and passenger shrouds. Don't forget the washers, and they make all the difference when positioning the light. Tighten the bolts so that they are tight but not too tight to allow for adjustment.

Passenger Side

Driver Side



12



The kit includes two thicknesses of sticky back EPDM, which is intended to be placed onto the brackets' tabs labeled 1 & 2. For the Tacoma, cut the **THIN** EPDM into ½" x ½" squares and place it onto the tabs' backside.

Step 6: Tighten the lights onto the vehicle with the factory screw. While tightening the screw, gently adjust the light assembly to ensure the desired alignment. Use the included H-11 wiring adapters to plug into factory wiring, ensuring the flip-flop connector is in the correct orientation. On most Toyotas, the fog light's **negative wire is a white wire with a black stripe**. The Quattro light wiring goes as follows; red = positive, black = negative.



Heretic

Heretic tip

Now that the light is almost installed, it is a good idea to make sure the light connector is orientated correctly. With the light switch turned on, and the fog light switch turned on, the lights should now light up. If the light does not, check the H-11 connector and, if needed, flip the connector 180 degrees. This is also a good time to check light alignment and make any necessary adjustments to the beam angle. We suggest that the light be turned off while making adjustments and then turned on after to check alignment. This will help prevent any accidental short circuiting.

Step 7: With the Quattro installed, route the wiring, avoiding any hot or moving parts, and use zip ties to keep the wiring in place. Reinstall the removed parts in reverse order, making sure to torque the bolts after driving 100 miles.

Your install is now complete! Thanks for choosing Heretic!



Heretic

1168 West 500 North Suite 500
Centerville UT, 84014
801-725-4824
Support@hereticstudio.com