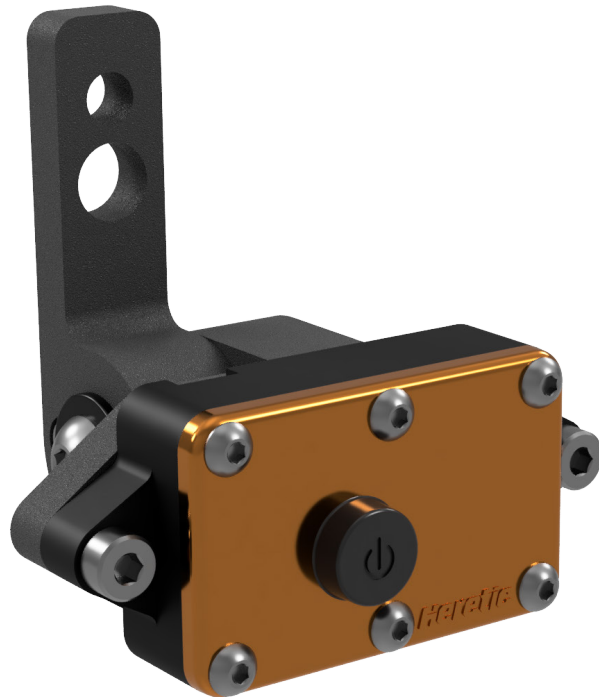




**Ford  
Bronco 21+  
Axis Mount Cargo Area Dome Light Install**



***Heretic***

1168 West 500 North Suite 500  
Centerville UT, 84014  
801-725-4824  
Support@hereticstudio.com

# Heretic

BEYOND LUMENS

**IMPORTANT:** Please read all instructions before beginning installation. These guidelines are provided in good faith to help prevent any issues arising from errors during installation. The manufacturer of this product shall not be held responsible for any user actions taken or not taken during installation. There are many details of the installation that are assumed to be general mechanical knowledge to experienced installers; which are not detailed in these instructions. These installation guidelines are intended to serve as professional recommendations and are not as a step-by-step, fail-safe installation checklist. Selection of an experienced installer is the sole responsibility of the project owner. Buyer is solely responsible for (and will indemnify and hold seller harmless for) any claims, losses, damages, fines, fees, costs, or other amounts arising out of Buyer's non-compliance with these installation instructions.

Always disconnect any power sources connected to your vehicle before servicing fuses or electrical systems.

## Tools Needed for Install:

- T25, T30 Torx screw driver
- 10mm socket, extension, wrench
- Panel Pry tool
- Wire Running Tool
- Tape / Zip Ties
- Crimp Tool
- Wire Cutters

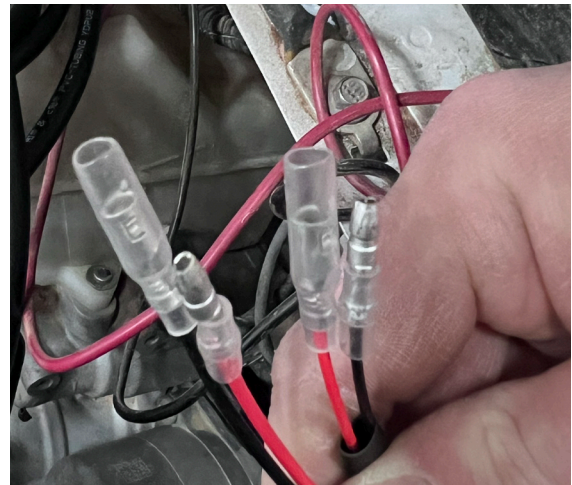
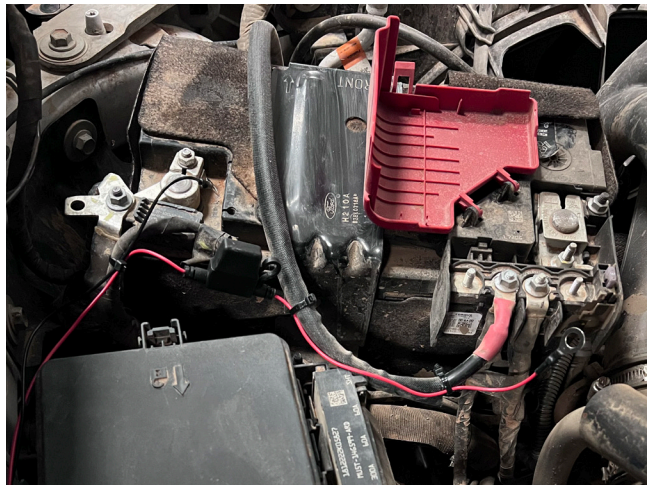
## Kit Contents:

- 1x Power Switch Harness
- 2x 84 Inch
- 1x 42 Inch
- 1x Axis Mount
- 1x Dome Light
- Mounting Hardware
- M6 Nyloc and washer
- Barrel Connector

## Ford Bronco ('21+)

**Step 1:** Pop the hood of the Bronco and location the positive and negative terminals on the battery. Route the "power Switch Harness" along existing wires and zip tie in place. Don't connect the ring terminal to the battery or run the switch, that will be done at the end of the install.

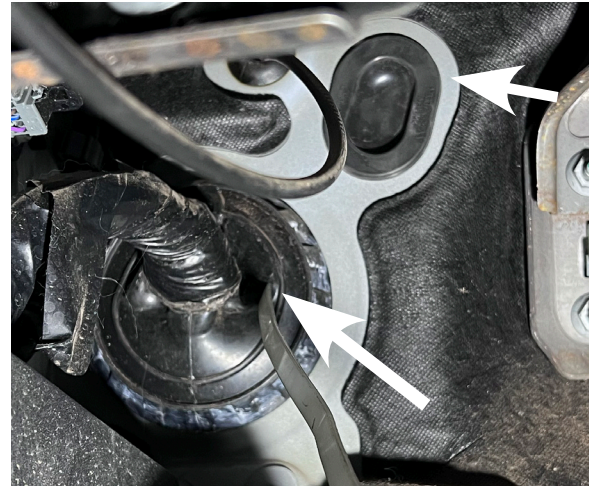
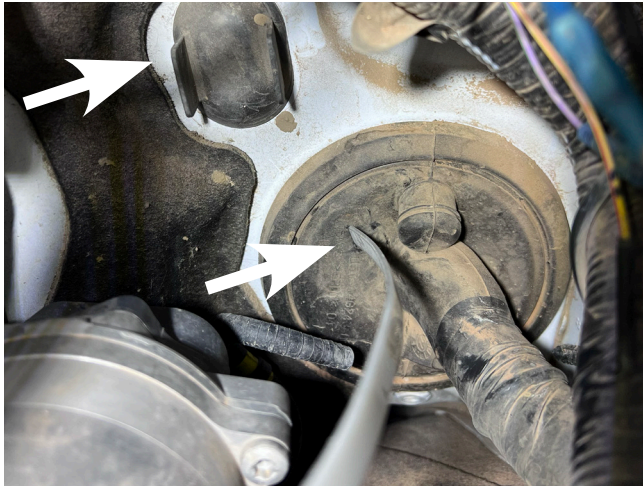
Next, Route the wires along the fender towards the fire wall. Attach one of the "84 Inch Extensions" to the "Power Switch Harness." Take note to attach it correctly by matching the colors and bullet style connector as indicated in the image below.



**Step 2:** Locate the OEM wire grommet. The wires will need to run through that grommet. We recommend using a large plastic zip tie (picture on the Left). Be careful to avoid any of the factory wiring when running through the firewall.

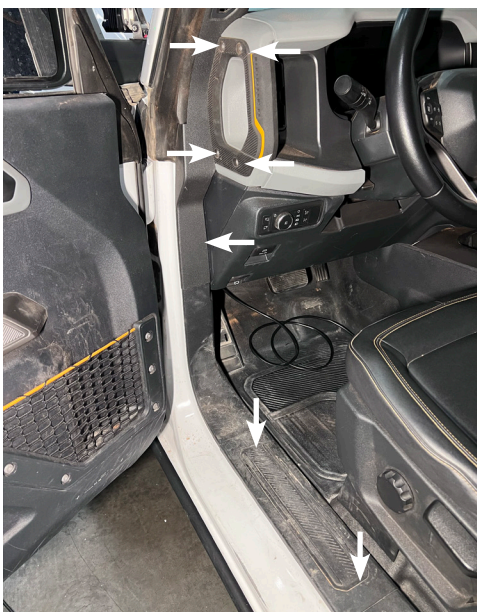
When routing the wire through the grommet, use electrical tape and tape a generous portion of the other end of the extension to the large plastic zip tie or wire running tool. Before pulling the wire, thoroughly apply some glass cleaner to the taped area. The glass cleaner will lubricate the wire going through the grommet and make it significantly easier to pull through.

**NOTE** - Some Broncos come with an unused grommet that can also be used. That grommet is indicated with an arrow.



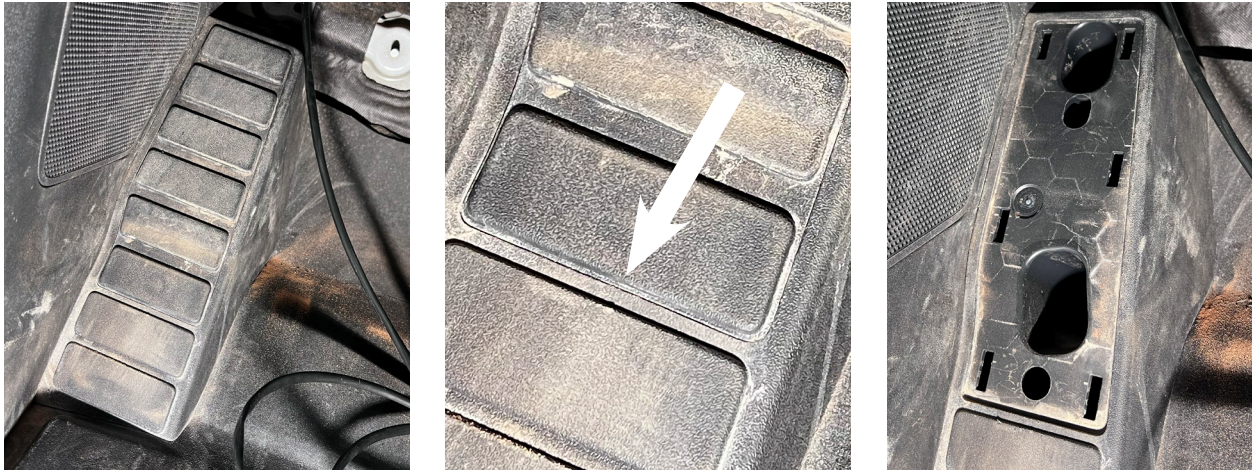
**Step 3:** With the wires ran through the firewall, the next step is to route them to the back of the vehicle. The door seal panels, dash handle and dead pedal will need to removed.

Start by removing four T30 Torx screws from the handle located on the side of the dash. Then remove the plastic trim panel along the door seal by pulling it the towards the back of the vehicle. Next remove the bottom door seal panel by pulling it towards the roof. Both panels are held by plastic clips only.



Next, remove the cover on the dead pedal. Using a panel pry tool, wedge the thinnest part of the tool into the seam and pry it up. The seam is located around the top 6 rectangles.

Once the cover is removed, remove the two 10mm nuts holding the panel to the floor. Next, remove the speaker grill by pulling the edge closest to the firewall towards the interior of the vehicle. Then release the clips holding the door seal panel and remove the rest of the trim. Zip tie and start routing the wire to the back of the vehicle following existing wiring.

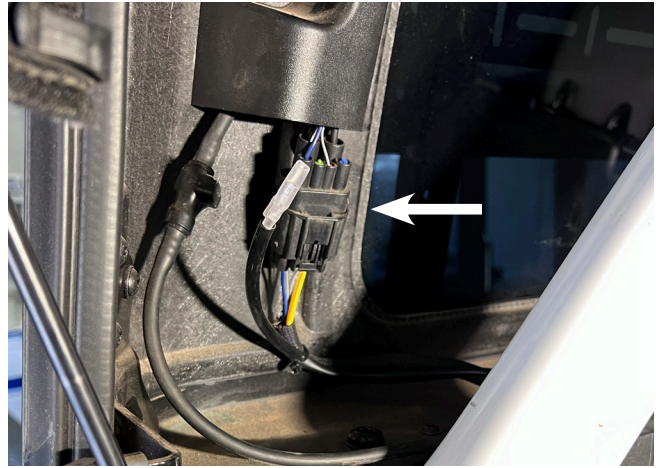


Remove the rear bottom door seal panel by pulling upward towards the roof and route the wire as indicated in the image. The b-pillar panel does not need to be removed, the wire can be "tucked" underneath.



Add the second "84 Inch Extension" and route the wires back to the rear cargo area. When routing the wires make sure to keep them away from the seat belt and any plastic clips.

Route the wires behind the cargo area panels and zip tie the end next to the plug indicated in the image. Excess wire can be hidden behind the cargo are panels.



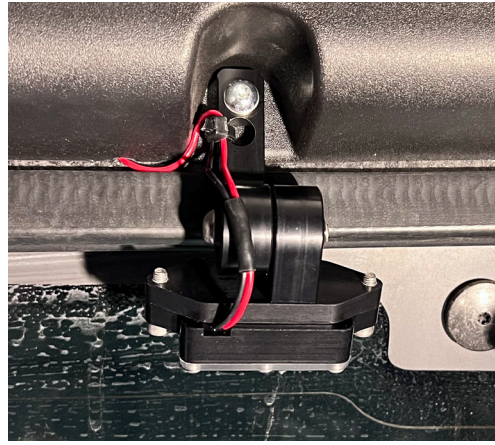
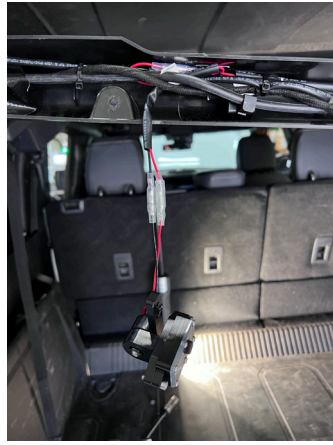
**Step 4:** With the wire routed to the back, the next step will be to removed the trim panels around the rear windshield and mounting the lights. The rear panels can removed by taking out six T25 Torx screws.



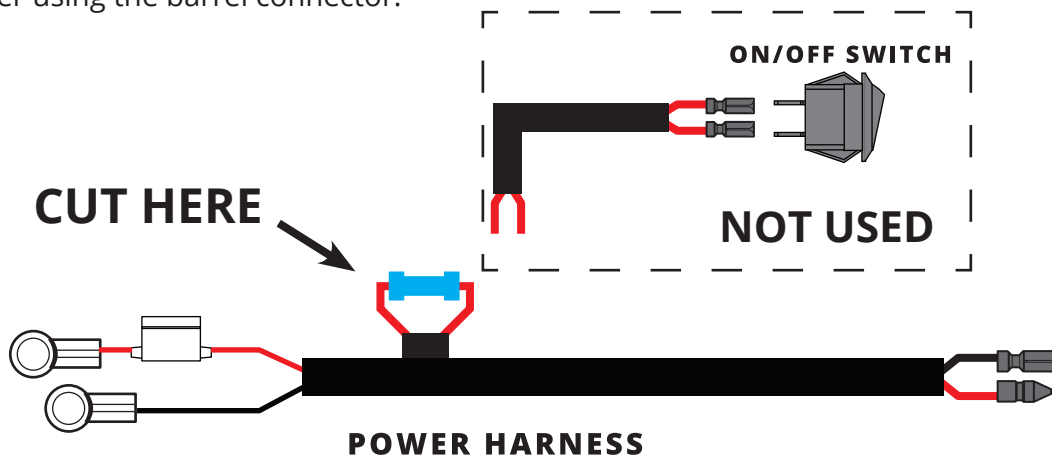
Once the panels are removed, attach the "42 Inch Extension" to the "84 Inch Extension." Route the wire following the OEM wiring, bundling the wire behind th panel. Next, mount the light in the lower cutout with the provided hardware. The washers can be used if the bolts bottom out before getting tight.

**NOTE-** If installing additional lights connect the "Y-Splitter" at the first light followed by the "42 Inch Extension" and then to the additional light.





**Step 5:** Connecting the power. To supply constant power to the lights the on and off switch will need to be cut off. Cut the switch as indicated in the diagram and connect the 2 red wires together using the barrel connector.



**Step 6:** Connect the ring terminals to the battery using the supplied M6 nut/washer and test the functionality of the lights. Once the functionality is checked, re-install any remaining panels in the reverse order.

**Your install is now complete! Thanks for choosing Heretic!**

   
@hereticstudio

***Heretic***  
*BEYOND LUMENS*