



# PINLOC 6000iPM USER MANUAL

VERSION 1

[sureshotlaser.com](http://sureshotlaser.com)

# GETTING STARTED

**Congratulations on your purchase of the Sureshot PINLOC 6000iPM. This owner's guide will help you achieve optimal performance by explaining the Sureshot PINLOC 6000iPM's features and operation, along with how to care for your laser. To ensure the best performance and longevity, please read these instructions before using your PINLOC 6000iPM.**

The **PINLOC 6000iPM** is packed with features such as:

**i** – Intelligent Pin seeking technology. This advanced mode uses uniquely developed software that ensures the closest object is chosen eliminating objects beyond the flag.

**P** – The pulse feature provides a short vibration when the target is acquired.

**M** - Internal magnet on the right side of the laser which enables it to be attached to any magnetic metal surface.



## **PULSE BUTTON**

1. Press to toggle Pulse Mode ON/OFF

## **MODE BUTTON**

1. Press and hold for 5 seconds to toggle between metres/yards

Quick press to cycle between:

- Scan Mode
- PINLOC Mode
- Default Mode

## **POWER BUTTON**

1. Press once to turn on LCD display
2. Press again to measure distance



## **ADJUSTABLE EYEPIECE**

## **BATTERY DOOR**



## **MAGNET**

[sureshotlaser.com](http://sureshotlaser.com)

# CONTENTS OF BOX

- Sureshot **PINLOC 6000iPM** Laser
- Protective Pouch
- Quick Start Guide
- Lens Cloth
- Wrist Strap
- Long Life Lithium Battery (CR2 3V)

To begin using your **PINLOC 6000iPM**, remove the protective plastic from the battery and insert into the laser rangefinder. Please refer to page 2 to locate the Battery Door.

## STARTING YOUR PINLOC 6000iPM

The **PINLOC 6000iPM** has three buttons: the Power button and the Mode button & the Pulse button (refer to page 2). To turn on your device, press the Power button for one second, the LCD screen will illuminate indicating the laser is ready to use.

## INTERNAL MAGNET

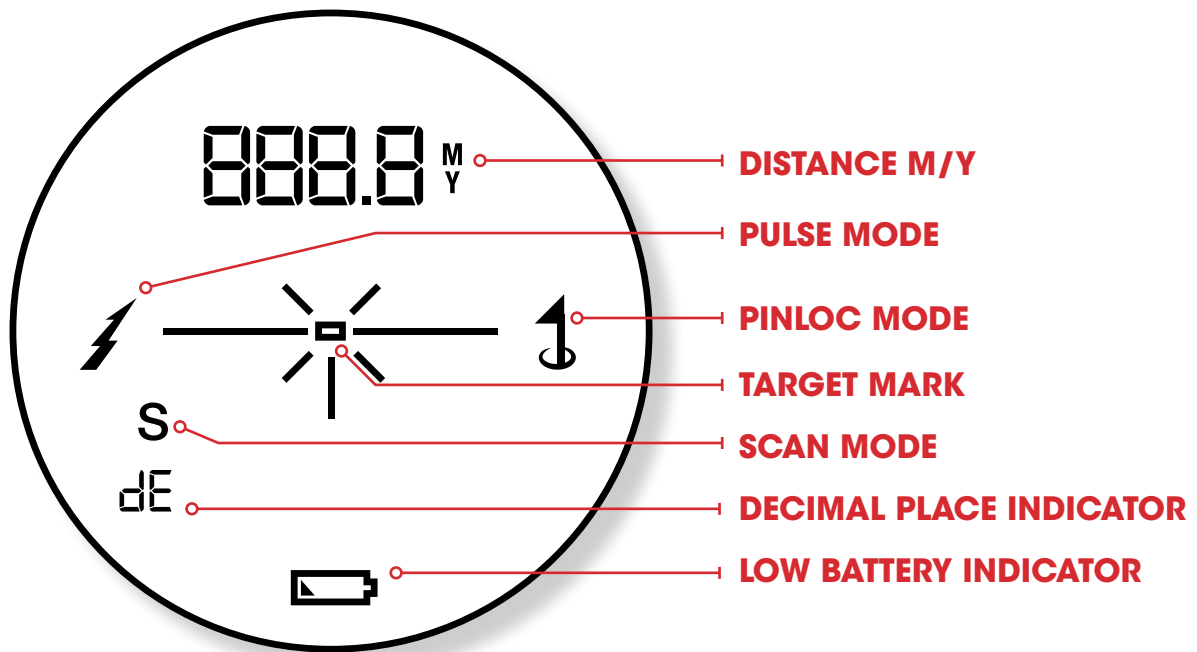
The **PINLOC 6000iPM** features an internal magnet on the side of the laser which enables it to be attached to any magnetic metal surface such as a cart or buggy for quick and easy access. Before attaching the laser to any surface using the internal magnet, ensure the connection is strong enough to hold the laser. It is the full responsibility of the operator to securely and safely operate the laser using internal magnet. Any damage by improper use of the internal magnet is not covered under warranty.

## ADJUSTING THE FOCUS

The **PINLOC 6000iPM** is designed with an adjustable eyepiece (dioptré). By adjusting the focus, people with far sighted or near sighted vision can use the **PINLOC 6000iPM** without glasses. Looking through the eyepiece, turn the dioptré a quarter turn left or right until the view is focused for you.



[sureshotlaser.com](http://sureshotlaser.com)

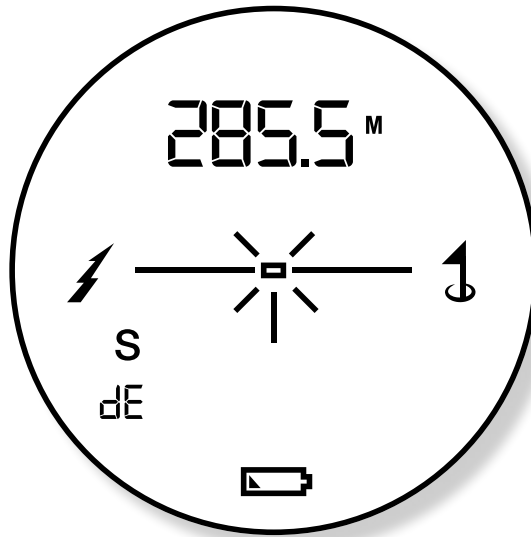


## OPERATING INSTRUCTIONS

Hold the **PINLOC 6000iPM** to your eye and depress the Power button once to turn on. The LCD display will now show three lines and a small rectangular box. Line the target up so it appears inside the rectangular box, then depress the Power button once. The distance from you to the target will be displayed on the screen instantly.

## PRIORITY LOC

The **PINLOC 6000iPM** instinctively locks onto the nearest target, which may be the smallest among multiple objects in the background giving you confidence you have the correct distance every time. Priority Loc intelligence delivers the first and closest target by scanning the area and displaying only the nearest distance. This feature automatically works by pressing the Power button once.



### **PULSE MODE ( ⚡ )**

The pulse feature provides a short vibration when the target is acquired through the rangefinder, ensuring you have correctly measured the distance to your chosen target. To turn Pulse mode on or off, press the button on the side of the laser once. A lightning bolt will appear in the viewfinder signifying Pulse mode is active.

### **PINLOC MODE ( 📍 )**

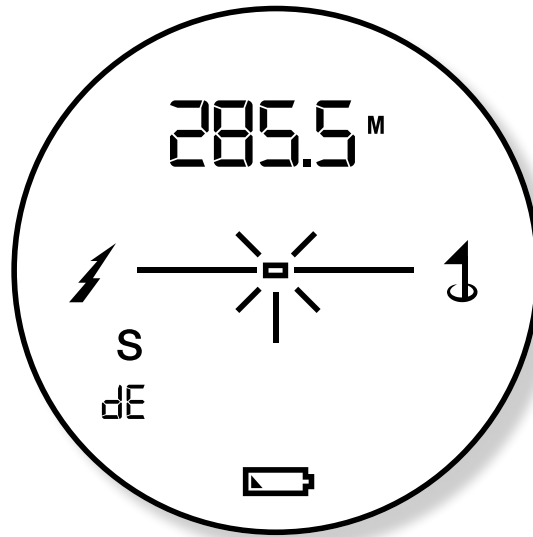
PINLOC technology ensures even the smallest target is locked on from the longest possible distance. This is important for delivering pinpoint accuracy. This feature is automatically delivered when the Power Button is depressed quickly once.

### **SCAN MODE ( S )**

The Scan feature displays a continuous update of distances to various targets across a panoramic area. To use the Scan feature, press the Power Button once, crosshairs will appear on screen. Pan across the target area. Once complete, press the Power Button again and the crosshairs will disappear and the laser will stop scanning.

### **DECIMAL PLACE ( dE )**

When the decimal place indicator is shown on screen, all measurements will be given to 1 decimal place. To toggle this feature on or off, quickly double press the Mode button.



### DISPLAY LOC

Each time the Power button is pressed, the distance is displayed on screen for 15 seconds, after which the screen automatically switches off.

### UNIT MEASUREMENT CHANGE

The **PINLOC 6000iPM** can be used to measure distances in metres or yards. Press the Mode button for 5 seconds to change the unit of measurement display. You can also change whether the distance shows a decimal place. Press the Mode button for 3 seconds to toggle the decimal point display.

### AUTOMATIC POWER-SAVE

The **PINLOC 6000iPM** will automatically switch off after 15 seconds of inactivity.

### BATTERY INDICATOR

A battery level warning will appear when the battery is running low. The battery can be replaced by removing the battery door (see diagram on page 2). Any brand of CR2 3V lithium battery can be used.

### ACCURACY

The **PINLOC 6000iPM** delivers incredible accuracy at +1 or -1 metre/yard. The range is dependent on the reflectivity of the target. The color, surface, shape and size of the target will affect reflectivity and the range. For example, red is highly reflective and will give longer range as opposed to black which is the least reflective color. A shiny surface will also provide more range than a dull one and likewise, a small target is more difficult to range than a large target. The angle to which you set your target also affects accuracy. A 90 degree angle will give you good range while a steep angle will provide limited range. Please note lighting, rain and fog can also affect accuracy levels, the less light the shorter the unit's maximum range.

# REGISTERING

Follow the easy instructions at [www.mgigolf.com/register-sureshot](http://www.mgigolf.com/register-sureshot) and enter the serial code found on the box/unit. The serial code starts with 5I (capital i). e.g. 5I12345

## **WHY REGISTER YOUR LASER?**

It is recommended that you register your **PINLOC 6000iPM** for warranty purposes. Registering your device helps you by allowing the Sureshot customer service team to document which equipment you own and where you purchased it for warranty claims. Also, if you misplace or lose your unit and it is found, we can return it to you.

## **CLEANING AND MAINTENANCE**

Gently blow away any dust or debris on the lenses or use the lens cloth. To remove dirt or fingerprints, rub in a circular motion. Use of a coarse cloth or unnecessary rubbing may scratch the lens surface and eventually cause permanent damage. For a more thorough cleaning, photographic lens tissue and photographic-type lens cleaning fluid or isopropyl alcohol may be used. Always apply the fluid to the cleaning cloth – never directly on the lens. **For protection of your PINLOC 6000iPM, always store in the pouch provided.**

[sureshotlaser.com](http://sureshotlaser.com)

# DISCLAIMERS

**WARNING:** This device contains a magnet. Magnets could affect the functioning of pacemakers and implanted heart defibrillators. If you use these devices, keep sufficient distance from the magnet.

Warn others who wear these devices from getting too close to magnets.

**CAUTION:** Use caution to avoid direct sunlight into the eyepiece to prevent damage to the display/internal components. When using the internal magnet to attach the device to a cart bar or frame, tilt the device so the eyepiece is aimed towards the ground, not pointed upwards towards the sun. When you are not using the device, please store it in the case for additional protection.

- Magnet may lose part of its adhesive force permanently if exposed to temperatures above 175°F (80° C).
- Magnets produce far-reaching, strong magnetic field. They could damage phones, TVs, laptops, computer hard drives, credit and ATM cards, data storage media, mechanical watches, hearing aids and speakers. Keep unit away from devices and objects that could be damaged by strong magnetic fields.
- Magnets have strong magnetic fields which can pinch skin and fingers. Use caution when attaching the unit to metal.
- Users need to change the battery when the battery icon displays empty. A low battery can affect accuracy. If you do not use the **PINLOC 6000iPM** for a long period of time, please take the battery out to minimise drainage.
- Do not touch the eyepiece directly or disassemble the device for any reason.
- If the external lens is dirty, please clean it with the lens cloth or isopropyl alcohol.
- Impacts or high pressure should be avoided.
- This unit is water resistant only – it is not waterproof.
- Avoid prolonged exposure of the lens in direct sunlight as this may cause damage to the optics of the device.
- The internal magnet should not be removed for any reason.
- Do not attempt to attach the laser to a non-magnetic, non-metallic surface.
- Do not attach the laser to a surface that is unstable or likely to disrupt the magnetic connection between the laser and the magnetic surface.
- It is the full responsibility of the operator to safely and securely attach the laser via the internal magnetic to a magnetic surface strong enough to hold the laser.
- Any damage caused by improper use of the internal magnet is not covered under warranty.
- Any damage caused by the laser falling or being dropped due to improper use of the internal magnet is not covered under warranty.



# NEED HELP?

Our friendly team is available via our website, telephone or email. It is recommended that you contact us first rather than returning to the place of purchase for the fastest response to your query.

**[www.mgigolf.com](http://www.mgigolf.com)**

## **MGI AUSTRALIA**

**Service Email:** [support@sureshotgps.com](mailto:support@sureshotgps.com)

**Live Chat:** visit [www.mgigolf.com](http://www.mgigolf.com)

**Toll Free within Australia:** 1300 644 523 (excludes mobiles)

Western Australia/ Internal phone +61 3 8872 6700

**Local Service Centres:** visit [www.mgigolf.com](http://www.mgigolf.com)

to locate you local service centre.

## **MGI USA**

**Service Email:** [serviceusa@mgigolf.com](mailto:serviceusa@mgigolf.com)

**Live Chat:** visit [www.mgigolf.com](http://www.mgigolf.com)

**Telephone:** 1800 617 2990

## **MGI GLOBAL**

**Sales Email:** [globalsales@mgigolf.com](mailto:globalsales@mgigolf.com)

**Service Email:** [customerservice@mgigolf.com](mailto:customerservice@mgigolf.com)

**Live Chat:** visit [www.mgigolf.com](http://www.mgigolf.com)

**[sureshotlaser.com](http://sureshotlaser.com)**

# SPECIFICATIONS

FEATURES	IMPERIAL	METRIC
Internal Magnet	YES	YES
Slope Mode	NO	NO
Pulse Mode	YES	YES
Scan Mode	YES	YES
PINLOC Mode	YES	YES
Priority LOC	YES	YES
Side Button	Toggle Pulse Mode	Toggle Pulse Mode
Multi Coated Lens for Optimum Clarity	YES	YES
Shock Proof	YES	YES
Water Resistant	YES	YES
Measure Range	5-1000y	5-914m
Range to Flag	5-330y	5-301m
Objective Lens	0.9"	24mm
Magnification	6X	6X
Field of View	6.5°	6.5°
Exit Pupil Diametre	0.15"	4.0mm
Battery Type	Enhanced CR2 3V Lithium	Enhanced CR2 3V Lithium
Working Temperature Range	14°F - 120°F	-10°C - 50°C
Low Level Battery Indicator	YES	YES
Auto Battery Saving	After 15 seconds	After 15 seconds
Dimensions	4.16" x 2.9" x 1.6"	105.7 x 73.8 x 40.7mm
Accuracy	±1y	±1m
Display	LCD	LCD
Special Functionality	Intelligence & Pulse	Intelligence & Pulse

# WARRANTY

## Limited Warranty

Sureshotgps™ Pty Ltd ("SS") warrants that product delivered in this package will be free from material defects for one (1) year following the date of purchase from SS or its authorized reseller, (2) year warranty if you register on sureshotgps.com within 30 days of purchase (Australia only). Specifications subject to change without notice. For the purpose of this warranty, "material defect" means any defect in a SS product that can be reproduced by SS and is a substantial nonconformity from the published specifications for such product. SS shall not be responsible for any loss or damage whatsoever resulting from any defect in or associated with its products which occur or are notified by the purchaser to SS or its authorized repairer more than one year from said date of purchase. This Limited Warranty does not apply to the battery, normal wear and tear or if any component of the sureshot hardware is opened or repaired by an unauthorized person or company, and does not cover repair or replacement of any sureshot hardware damaged by: MISUSE, MOISTURE OR LIQUIDS, EXPOSURE TO HEAT, ACCIDENT, ABUSE OR NEGLIGENCE. Dropping your sureshot can permanently damage the laser, optical lenses and LCD, display which is not covered under the terms of the Limited Warranty. This Limited Warranty does not cover physical damage to the surface of the SS, including cracks or scratches on the LCD screen and Lenses. This Limited Warranty does not extend to any defects which have been caused or contributed by neglect, misuse or accident, nor in respect of product which has been altered by other than authorized SS personnel or its authorized repairers. The determination as to whether the terms of this warranty are to apply to returned products is within the sole discretion of SS or its authorized repairer. Provided any returned product is determined to be covered by this warranty, SS or its authorized repairers shall at SS's sole discretion, repair or replace, free of charge, any products or parts thereof. In no event whatsoever shall SS be liable for any incidental, special or consequential loss or damage resulting from the purchase and/or use of its products howsoever caused and howsoever claimed. Any liability on SS under this warranty in respect of any repair and /or replacement and/or any action involving any of its products shall be limited to and not exceed the purchase price of the product in question. The terms of this warranty are subject to relevant provisions of any Federal, State or Municipal law. Any dispute or action in relation to this warranty or the construction of it shall be subject to and conducted in accordance with the laws of Victoria, Australia.

Before returning any product, contact the SS Customer Support Group and obtain an RA number. Visit the sureshotgps™ website [www.sureshotgps.com](http://www.sureshotgps.com) for support contact details. If the Customer Support Group verifies that the product is likely to be defective they will issue an RA number to place on the outer package in which the product will be shipped. SS cannot accept any product without an RA number on the package. Warranty returns must also be accompanied by a copy of the dated proof of purchase. Deliver the product along with the RA number to SS. If you ship the product you must assume the risk of damage or loss in transit. You must use the original container (or the equivalent) and pay the shipping charge. SS may replace or repair the product with either a new or reconditioned product and the returned product becomes SS's property. SS warrants the repaired or replaced product to be free from material defects for a period of the greater of (i) ninety (90) days from the return shipping date; or (ii) the period of time remaining on the original one (1) year warranty. If there is any inconsistency between this Limited Warranty and any Warranty included in the packaging of the sureshot, the provisions of this Limited Warranty shall apply.

Our goods come with guarantees that cannot be excluded under Consumer Law. You are entitled to a replacement or refund for a major failure and for compensation for any other reasonably foreseeable loss or damage. You are also entitled to have the goods repaired or replaced if goods fail to be of acceptable quality and the failure does not amount to a major failure. This warranty is in addition to other rights and remedies available to the consumer under law. The consumer is responsible for expenses associated with a warranty claim. To make a warranty claim, cease using the goods immediately and contact SS directly using the contact details on the back of this User Manual. Proof of purchase is mandatory.

[sureshotlaser.com](http://sureshotlaser.com)



**[www.mgigolf.com](http://www.mgigolf.com)**

**GLOBAL CUSTOMER SUPPORT**

**E** [support@sureshotgps.com](mailto:support@sureshotgps.com)

**MGI GOLF AUSTRALIA**

**MGI HEAD OFFICE**

11 Maurice Court Nunawading 3131

Victoria Australia

**T** +61 3 8872 6700 **E** [sales@mgigolf.com](mailto:sales@mgigolf.com)

**SERVICE** [customerservice@mgigolf.com](mailto:customerservice@mgigolf.com)

**MGI GOLF USA**

**T** 1800 617 2990 **E** [salesusa@mgigolf.com](mailto:salesusa@mgigolf.com)

**SERVICE** [serviceusa@mgigolf.com](mailto:serviceusa@mgigolf.com)

**MGI GLOBAL**

**E** [globalsales@mgigolf.com](mailto:globalsales@mgigolf.com)

Follow us on



*Absolute attention has been taken to ensure this User Manual is correct at time of exporting. Specifications, images and statistics may change at any time. Visit [www.mgigolf.com](http://www.mgigolf.com) for the most current model information. 02/2021*