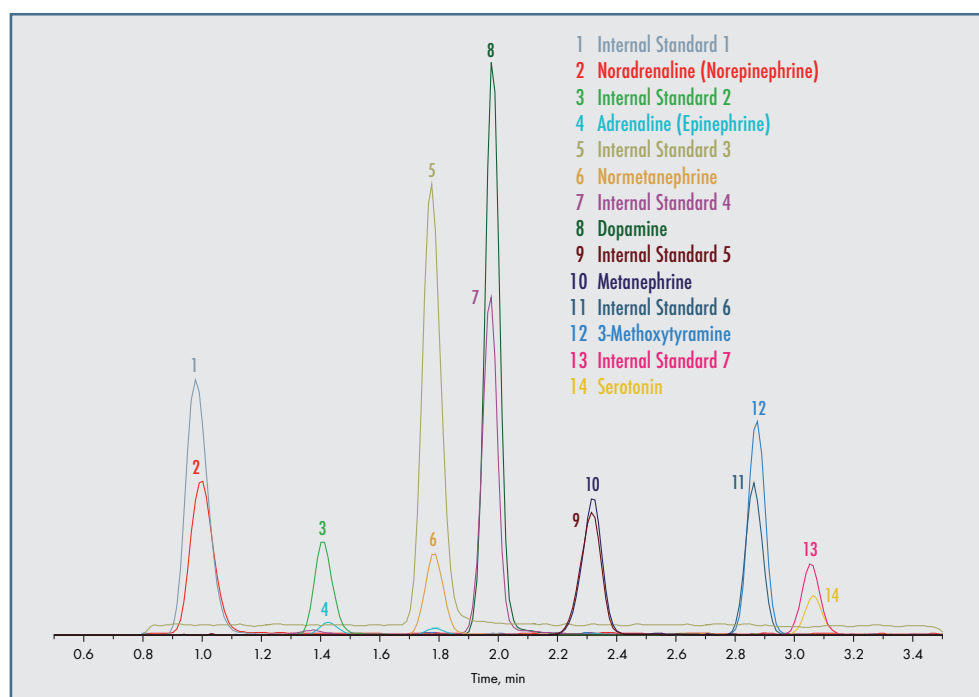


# MassChrom® Catecholamines, free Metanephrines, Serotonin in Urine with 96 SPE Well Plates

## Sample Prep Set for LC-MS/MS Analysis

- > Identical Chromatographic Platform for all Sample Prep Sets
- > 7 analytes with one Sample Prep Set
- > Isotopically labelled internal standards
- > 6PLUS1® Multilevel Calibrator Set & MassCheck® controls
- > Fully automated workflow available



The Sample Prep Set Catecholamines, free Metanephrines and Serotonin in Urine allows the quantitative determination of adrenaline (epinephrine), noradrenaline (norepinephrine), dopamine, metanephrine, normetanephrine, 3-methoxytyramine and serotonin in patient urine samples by LC-MS/MS. One typical application for this kit is the analysis of patient samples with suspected catecholamine or serotonin secreting tumors.

The Sample Prep Set encompasses all required components for an efficient and fast sample preparation by solid phase extraction (SPE) with 96 SPE well plates. The correct pH, required for a precise analysis, is verified quickly and conveniently by a colour indicator and can be adjusted with a specific reagent. The 6PLUS1® Multilevel Calibrator Set and MassCheck® controls ensure high precision of results. A fully automated workflow solution is also available.

Alternatively, there is also a method available using Sample Clean Up Columns (80600/C).

### SPECIFICATIONS

Linearity: 1600–5000 µg/l  
 Limit of quantification: 1.0–13.5 µg/l  
 Intraassay: CV = 1.5–8.1 %  
 Interassay: CV = 3.1–10.7 %  
 Analysis time: 4 min

### PRE-ANALYTIC TREATMENT

Specimens: 24 h urine collected in a suitable container with 10 ml of 10–25 % HCl. Spontaneous urine can be also analysed (see instruction manual).

Sample stability: Patient specimens are stable for at least 7 days at +2 to +8 °C in amber coloured vials. For longer storage periods keep samples frozen below -18 °C.

### SAMPLE PREPARATION

- > Put 96 SPE well plate onto a collection plate.
- > Pipette 200 µl of the sample/calibrator/MassCheck® control into each well of the 96 SPE Well Plate.
- > Add 50 µl Internal Standard Mix and 600 µl Neutralisation Buffer.
- > Check for correct colour.
- > Centrifuge 5 min at 150 x g, discard effluent.
- > Add 0.9 ml Wash Buffer 1 and centrifuge 5 min at 150 x g, discard effluent.
- > Add 2 x 0.9 ml Wash Buffer 2 and centrifuge each time 1 min at 150 x g, discard effluent.
- > Centrifuge 1 min at 2000 x g to dryness, discard effluent.
- > Place 96 SPE well plate onto a new collection plate.
- > Add 500 µl Elution Buffer to each well and centrifuge 2 min at 100 x g.
- > Add 500 µl Dilution Buffer to each well of the collection plate.
- > Seal collection plate with adhesive seal.
- > Shake for 2 min at 900 rpm and transfer to autosampler.
- > Inject up to 10 µl.

### LC-MS/MS PARAMETERS

Injection volume: ≤ 10 µl  
 Ionisation: ESI positive  
 MS/MS-Mode: MRM

## ORDERING INFORMATION

These products are not available in all countries

Order no.	Product
80000	<b>MassChrom®</b> Biogenic Amines/Metabolites in Urine: Chromatographic Platform Starter Set
	<b>Components available separately:</b>
80001	Mobile Phase A, 1000 ml
80002	Mobile Phase B, 500 ml
80009	Rinsing Solution, 1000 ml
80100	Analytical column (equilibrated with test chromatogram), 1 pc.
80600/96	<b>MassChrom®</b> Biogenic Amines/Metabolites in Urine: Catecholamines, free Metanephrines, Serotonin with 96 SPE Well Plate Sample Prep Set for 96 analyses
	<b>Components available separately:</b>
80604	Internal Standard Mix, 5 ml
80605	Neutralisation Buffer, 60 ml
80606	Wash Buffer 1, 90 ml
80607	Wash Buffer 2, 90 ml
80608	Elution Buffer, 50 ml
80609	Dilution Buffer, 50 ml
80056	Collection plates <b>MassChrom®</b> Biogenic Amines/Metabolites in Urine, 3 pcs.
80057	96 SPE well plate <b>MassChrom®</b> Biogenic Amines/Metabolites in Urine, 1 pc.
80059	Pierceable adhesive seals for 96 well plates <b>MassChrom®</b> Biogenic Amines/Metabolites in Urine, 3 pcs.
80600/480	<b>MassChrom®</b> Biogenic Amines/Metabolites in Urine: Catecholamines, free Metanephrines, Serotonin with 96 SPE Well Plates Sample Prep Set for 480 analyses
	<b>Components available separately:</b>
80604/5	Internal Standard Mix, 5 x 5 ml
80675	Neutralisation Buffer, 300 ml
80676	Wash Buffer 1, 450 ml
80677	Wash Buffer 2, 500 ml
80678	Elution Buffer, 250 ml
80679	Dilution Buffer, 250 ml
80056	Collection plates <b>MassChrom®</b> Biogenic Amines/Metabolites in Urine, 3 pcs.
80057	96 SPE well plate <b>MassChrom®</b> Biogenic Amines/Metabolites in Urine, 1 pc.
80059	Pierceable adhesive seals for 96 well plates <b>MassChrom®</b> Biogenic Amines/Metabolites in Urine, 3 pcs.
	<b>Startup Accessories for 80600/96 and 80600/480:</b>
80615	Tuning Mix, Internal Standards and Analytes, 1 ml
80610	System Check Solution, 1 ml
80603	Adjustment Reagent, 10 ml
15070	Stainless steel prefilter housing, 1 pc.
15071	Stainless steel prefilter, 0.5 µm, 5 pcs.
	<b>Chromsystems Multilevel Calibrator and MassCheck® Controls for 80600/96 and 80600/480 (lyoph.):</b>
80639	6PLUS1® Multilevel Urine Calibrator Set Catecholamines, free Metanephrines, Serotonin, 7 x 2 ml
0372	<b>MassCheck®</b> Catecholamines, free Metanephrines, Serotonin Urine Control Level I, 5 x 2 ml
0373	<b>MassCheck®</b> Catecholamines, free Metanephrines, Serotonin Urine Control Level II, 5 x 2 ml

