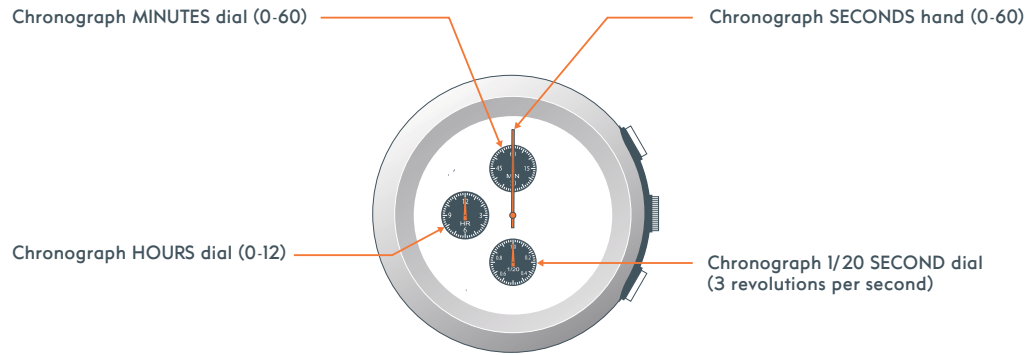
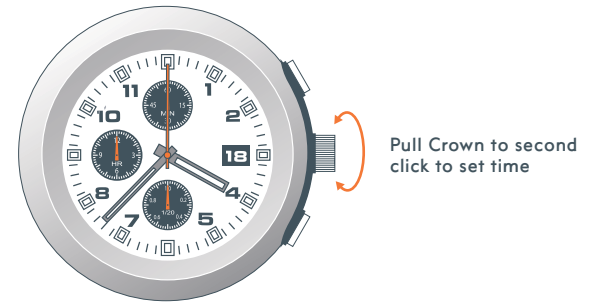
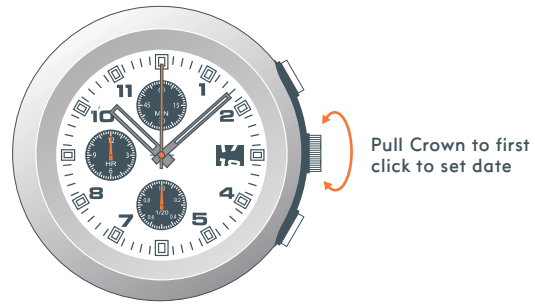
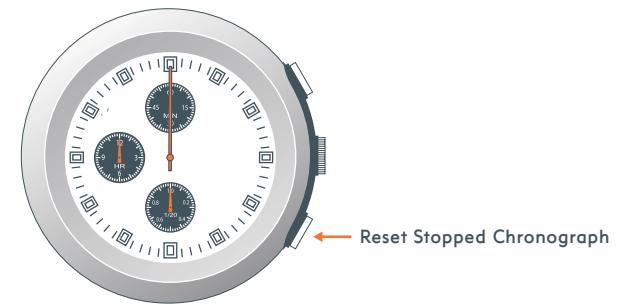
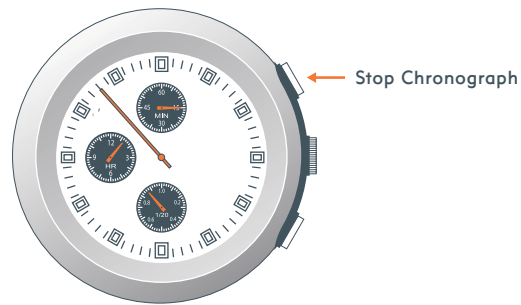
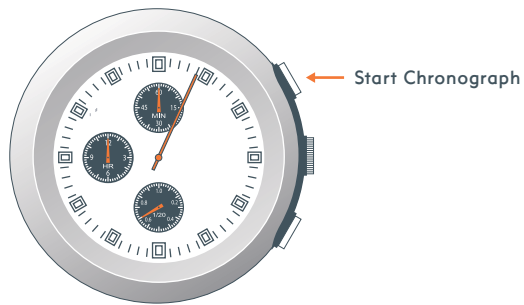


LANCE CHRONO

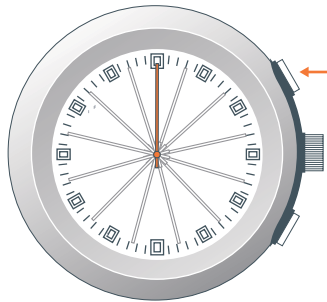


NOTE: The 1/20 SECOND dial will stop after 30 seconds to save battery life.

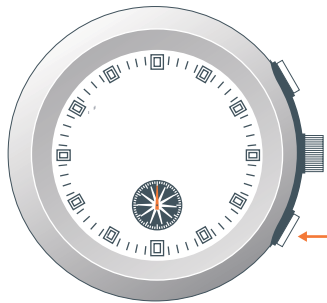




If the SECONDS and 1/20 SECOND hands do not return to "0" position after resetting the chronograph, pull Crown to second click for calibration



Press until SECOND hand reads zero



Press until 1/20 SECOND hand reads zero



Once hands have been zeroed, reset time and return crown to normal position

H2O RESIST

100m

OPERATING TEMPERATURE

-5 to 50° Celsius

Material Specifications

CRYSTAL

Mineral Glass

LINKS

Titanium

STRAP

Polyurethane

CASE

Aluminum

CASEBACK

Stainless Steel

BUTTONS

Stainless Steel

BUCKLE

Stainless Steel

Mode Limits

CHRONOGRAPH

11:59'59"

Battery

SR927W

Battery Replacement

Do not open watch back.

Battery replacement must be performed by a certified Nike service center to retain a valid warranty. In addition to battery replacement, the service center will test movement, gaskets, water resistance and hardware, to further ensure the long-term care of your watch.