



Monterey CERT NEWSLETTER

August 2023 *“Training And News For
The Monterey, CA COMMUNITY
EMERGENCY RESPONSE TEAM”.*
*A Monterey citizen volunteer emergency
response team funded by the City of
Monterey*



Twenty-Three CERT Members Deploy To Assist Police With Traffic Control During Monterey 4th of July Parade!

On Tuesday, July 4th, twenty-three CERT members deployed for a **planned event** to assist Monterey Police with traffic control during the Monterey 4th of July parade. CERT deployed to seven designated locations along the parade perimeter to secure hard-closure points. This was both an outstanding deployment and training event as many aspects of a CERT event were exercised. We established staging, set-up command & communications, conducted safety checks, deployed CERT to the field, rotated relief teams, provided food and rehab, worked with another City agency (POLICE), tracked teams in the field and conducted demobilization and sign-out.



Monterey 4th of July Parade



CERT Responds to Search For Missing, At-Risk Teen.

On Friday, June 30th at 5 P.M., Monterey CERT received an alert/request from the Monterey Police Department to deploy and assist with an active search for a missing, at-risk male teen. CERT members responded to the Staging area at Monterey Peninsula College. Just as CERT was about to send members into the field, the subject was located a few blocks from Staging. We are always relieved to have this type of positive conclusion to a search event.

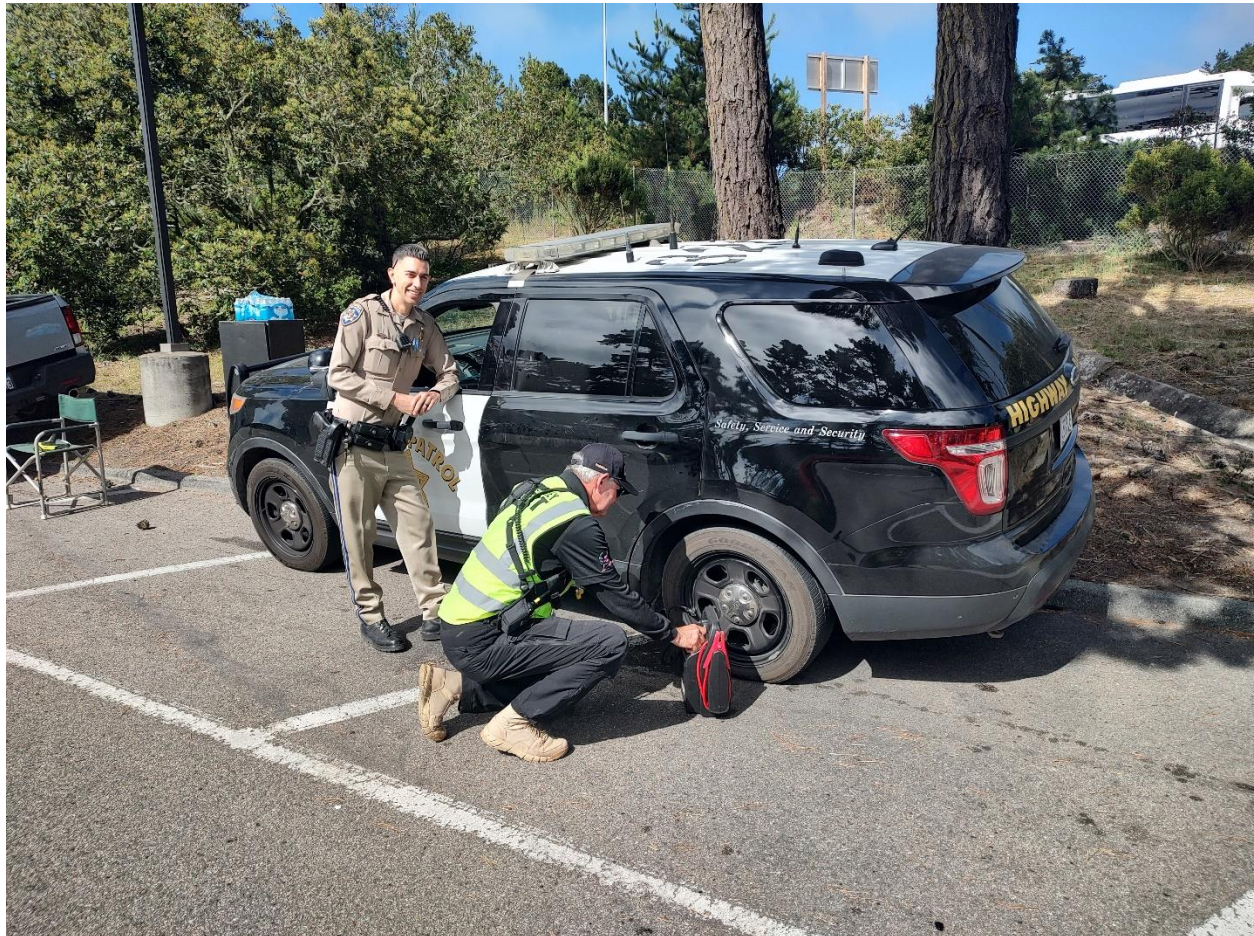
20 CERT Members Respond To Assist in Search for Missing Monterey Resident Salvatore Lucido.



On Monday, July 24th the Monterey Police Department activated CERT to assist in the search for a missing, at-risk, 44 year old male subject identified as Salvatore Lucido of Monterey. 20 CERT members responded to assist. CERT volunteers searched assigned grids in Pebble Beach for several hours. **The subject remains missing.** If you see Mr. Lucido or have information as to his whereabouts, please call 911 or the Monterey Police Department at **646-3830.**

Carmel Valley CERT Provides Traffic Control Assistance At LPGA U.S. Open in Pebble Beach.

Working with event officials, Pebble Beach personnel and Cal-Fire, Carmel Valley CERT members provided traffic control services during the LPGA U.S. Open golf event in at Pebble Beach. CV CERT members were stationed at several locations, including the Carmel Hill Gate to assist with managing the large traffic impacts from the event.



Above: Carmel Valley CERT member Jim Pagnella assists a California Highway Patrol Officer with a tire that needed to be inflated. Carmel Valley CERT members worked at the LPGA U.S. Open during the entire four days of the event. This was an outstanding training opportunity as, under the leadership of Team Captains Greg &Carolyn Profeta, members established Command, set-up communications, assigned tasks, conducted safety checks, provided relief, rotated teams and most importantly, worked as a team.

Next **CERT class for new members** occurs over three consecutive Saturdays, October 14th, 21st & 28th. To enroll, send an email of interest to : training@montereycert.org



Above : CERT responders train on using a fire extinguisher. This is just one part of the FEMA CERT training curriculum.

Safety Tip : Many of us love to hike on the numerous trails in our area.

Always make sure someone knows where you will be hiking. Make sure your cell phone is charged. If you become lost in a remote area, call for help. Walking downhill is often the most likely way to encounter people and help. Try changing the voice mail on your phone to report where you are and that you may be injured. This way if your phone battery goes dead, your voice mail will give important information to those who may be looking for you. Always have a map with you. There are trail maps available online or through easily obtained books for most of our local hiking areas, like Jack's Peak, Garland Park and the Big Sur Coast. Carry water, some basic first-aid supplies and food. Benedryl is an effective treatment for allergic reactions. Mylar blankets are very light and compact and can help keep you warm. Have a small flashlight. Have fun, but STAY SAFE !

Guide to Your CERT Hand-Held Radio: The CERT radio system is quite advanced. We have hand-held radios in all neighborhood containers and the trailer. Over 100 CERT members have purchased your own CERT hand-held radio! Here is a guide to the use of your radio. **REMEMBER: Your radio “talks” to you when you press a button on the front or the middle left side of the radio.**



1. **A/B button.** This allows you to switch your transmit capability between the upper and lower (A&B) banks of the radio. This establishes your “Primary Bank or Channel”. You can monitor both banks, but only transmit on one or the other. There is a small arrow on the screen, to the left of the word “FIRE” (as shown above) that denotes which bank you have transmit capability on.
2. **MENU button.** For normal use avoid this button.
3. **TDR button.** This allows you to choose whether you are monitoring one bank or two. For most users, it is best to remain on your one assigned channel and use only one bank to avoid excessive radio traffic.

4. **EX button.** This allows you to lock the buttons on the front of your radio to avoid unwanted adjustments or changes. A small key emblem will appear in the lower right-hand side of the screen to denote your push buttons are locked. This does NOT lock the knobs on top of the radio, or the buttons on the left side. Depress for two seconds to activate or de-activate.
5. **UP and DOWN arrows.** These allow you to change channels on the designated bank (the one with the small arrow to the left). This is the same function as the middle knob on the top of the radio. The knob on the right top is your on/off volume control.



On the left side of the radio you have **three buttons**. The top button is your **transmit button**. Depress the button for one second, then speak clearly into the front of the radio with your mouth approximately 8-12” from the radio face. Release the button when you are finished speaking. Keep your transmissions brief. When reporting a hazard to Command, report:

What is it? Where is it? What do you need?

The **middle button allows you to scan** (listen to) all the channels in the primary bank. This can be very confusing as there are many CERT, MURS, fire and police channels programmed into your radio. Again, best to remain on your assigned channel, without the scan function on.

The **lower button activates the small flashlight** on the top on your radio. This is very helpful when you need light for a short duration to write down important information or illuminate the area. Extended use will reduce your radio battery time. CERT 4 is our primary channel as it uses a “repeater” to boost signal.

You can only transmit on the 4 CERT and 5 MURS (Multi-Use Radio System) channels. The other channels are monitor (listen to) only.

The antenna on the top of your radio should be tightly fastened in place. This is a twist on/off adjunct which can work loose. Check it regularly to assure it is firmly attached. **DO NOT ATTEMPT TO TRANSMIT WITHOUT AN ANTENNA.**

REMEMBER: It is best to use only one of the radio (TDR Switch) banks and remain on your assigned radio channel. This avoids hearing excessive radio traffic which can be very confusing. Make sure you are familiar with the functions of the CERT radio as this is our primary means of communication.



Battery. The battery is on the back of the radio. (1.) To remove the battery, simultaneously depress the buttons on both sides of the battery. Pull back on the top of the battery.

To attach the radio to your belt, depress the belt radio holder (2.) and slide the radio onto your belt. On the inside of the battery on a small label is the date of manufacture. If older than 5 years, replace the battery. Date is on the inside.

Next CERT Radio Drill: Monday, August 14th at 7 P.M. on CERT Channel 4

Consult with your team leader to view your CERT container

TEAM	LAST NAME	FIRST NAME	E-MAIL
CONA	Ruccello	Richard	rruccello@aol.com
CONA	Brassfield	Michael	tobiejuan@comcast.net
Crml	Smythe	Scot	scot@smytheglobal.com
Crml	Vollmer	Wanda	info@peaceofmindpreparedness.com
CV	Profeta	Greg	greg@forgeintheforest.com
CV	Profeta	Carolyn	carolyn@forgeintheforest.com
DMB	Swisher	Gerald	concretescarecrow@gmail.com
DMB	Blackstone	Sarah	sarahblack@aol.com
DV	Hanson	Scott	stanh831@gmail.com
FH	Ittelson	John	jittelson@mac.com
FH	O'Brien	Dan	dan@salasobrien.com
MV	Alameda	Lisa	alameda738@att.net
NM	Rizzo	Gene	gene@coastalmanufacturing.net
OG	Dawson	Mike	mike.dawson.67@gmail.com
OG	Whitney	Lee	lwhitney306@gmail.com
OT	Netzorg	Greg	gzorg1@comcast.net
OT	Rasmussen	Thor	thor@gotcomms.com
OT	Preti	Isabelle	Isapreti@sbcglobal.net
PG	Leon-Guerrero	Glenn	leongg7@gmail.com
SL	Duke	Dennis	dduke01@sbcglobal.net
SL	Kastros	Demetrius	demekastros@msn.com
	Casanova		
CONA	Oak/Knoll	NM	New Monterey
Crml	Carmel	OG	Oak Grove
CV	Carmel Valley	OT	Old Town
DMB	Del Monte Beach	PG	Pacific Grove
DV	Dela Vina	SL	Skyline
FH	Foothill		
MH	Monterey High		
MV	Monte Vista		
CV	Carmel Valley		