

PORT AUTHORITY.

# Port Authority® Tall Textured Soft Shell Jacket. TLJ705



Perfect for everyday wear, our soft shell jackets have an understated texture that make them a bit more sophisticated than other soft shells. Super soft with stretch, these wind-resistant, water-repellent jackets deliver pure comfort. The raglan silhouette gives you optimum range of motion, while the angled zippered chest pocket adds visual appeal.

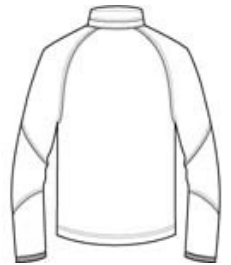
- 96/4 poly/spandex woven shell bonded to 100% polyester microfleece with laminated film insert to repel water and wind
- 1000MM fabric waterproof rating
- 1000G/M<sup>2</sup> fabric breathability rating
- Storm flap with chin guard
- Ergonomic zipper pulls
- Zippered chest pocket
- Front zippered pockets
- Spandex-trimmed cuffs
- Port Pocket™ for decoration access

#### CARE INSTRUCTIONS

Machine wash cold with like colors. Only non-chlorine bleach if needed. Tumble dry low, remove promptly. Cool iron if necessary.

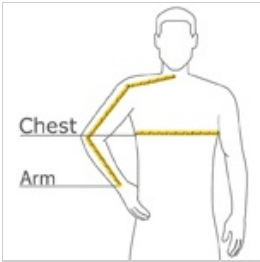


front



back

#### HOW TO MEASURE



#### CHEST WIDTH

Measure under the arm and around the fullest part of the chest with arms down, keeping tape horizontal.

#### ARM

Place hand on hip. Start at the center of the back of the neck and measure across the shoulder, to the elbow, and then down to the wrist.

#### SIZE CHART

	LT	XLT	2XLT	3XLT	4XLT
Chest	41-43	44-46	47-49	50-53	54-57

#### COLOR INFORMATION



Black  
PMS NTR BLACK  
C