



Span the divide between dressy and casual with this versatile v-neck sweater vest that pairs easily with slacks or jeans.

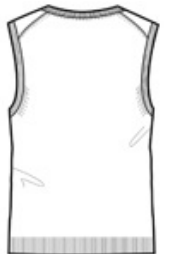
- 60/40 cotton/nylon
- Rib knit v-neck, armholes and hem

**CARE INSTRUCTIONS**

Wash cold with like colors, non-chlorine bleach if necessary, lay flat to dry.



front



back

**HOW TO MEASURE**



**CHEST WIDTH**

Measure under the arm and around the fullest part of the chest with arms down, keeping tape horizontal.

**SIZE CHART**

	XS	S	M	L	XL	2XL	3XL	4XL
Chest	32-34	35-37	38-40	41-43	44-46	47-49	50-53	54-57

**COLOR INFORMATION**



Black  
PMS NTR BLACK  
C



Charcoal Heather  
PMS 426C



Navy  
PMS 532C