

# Red House<sup>®</sup> Nailhead Non-Iron Shirt. RH370



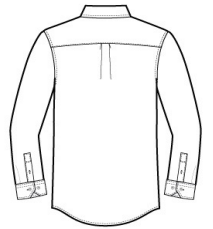
Thoroughly updated, this crisp nailhead shirt has a silky feel and a wrinkle-resistant finish for exceptional non-iron performance. 4-ounce, 60/40 cotton/polyester with pucker-free taped seams and RH engraved buttons to elevate the office-ready look. Button-down collar, left chest pocket, back box pleat and mitered adjustable cuffs.

**CARE INSTRUCTIONS**

Machine wash cold with like colors, only non-chlorine bleach when needed, tumble dry low, warm iron if needed.

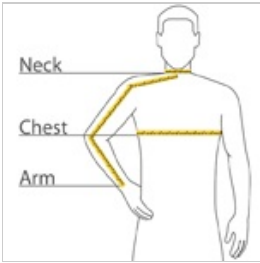


front



back

**HOW TO MEASURE**



**CHEST WIDTH**

Measure under the arm and around the fullest part of the chest with arms down, keeping tape horizontal.

**NECK**

Measure around the fullest part of the neck at the base.

**ARM**

Place hand on hip. Start at the center of the back of the neck and measure across the shoulder, to the elbow, and then down to the wrist.

**SIZE CHART**

	XS	S	M	L	XL	2XL	3XL	4XL
Chest	32-34	35-37	38-40	41-43	44-46	47-49	50-53	54-57
Neck	14 1/2 - 15	15 - 15 1/2	15 1/2 - 16	16 - 16 1/2	16 1/2 - 17	17 - 17 1/2	17 1/2 - 18	18 - 18 1/2
Arm	30 1/2	32	34	35	36 1/2	37 1/2	38 1/2	39 1/2

**COLOR INFORMATION**



Blue Pearl  
PMS 7451C



Deep Scarlet  
PMS 505C



Ice Grey  
PMS NO MATCH



Mediterranean Blue  
PMS 7687C



Navy  
PMS 2139C