

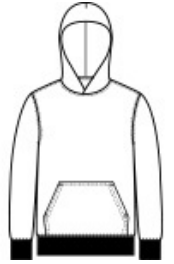
Cozy sweats in our core weight.

- 7.8-ounce, 50/50 cotton/poly fleece
- Air jet yarn for softness
- No draw cord at hood

Due to the nature of 50/50 cotton/polyester neon fabrics, special care must be taken throughout the printing process.

**CARE INSTRUCTIONS**

Machine wash cold, inside out, with like colors. Only non-chlorine bleach when needed. Tumble dry medium. Medium-hot iron. Do not iron decoration.



front



back

**HOW TO MEASURE**



**CHEST WIDTH**

Measure under the arm and around the fullest part of the chest with arms down, keeping tape horizontal.

**SIZE CHART**

	XS	S	M	L	XL
Size	4	6/8	10/12	14/16	18/20
Chest	25-26	26-28	28-30	30-32	32-35

**COLOR INFORMATION**

Ash PMS COOL GRAY 3C	Athletic Heather PMS COOL GRAY 7C	Carolina Blue PMS 7682C	Charcoal PMS COOL GRAY 11C	Coyote Brown PMS 2326C	Dark Chocolate Brown PMS 412C	Dark Green PMS 560C	Dark Heather Grey PMS 7540C	Gold PMS 137C	Graphite Heather PMS COOL GREY 10C	Heather Navy PMS 2379C
Jet Black PMS NTR BLACK C	Kelly Green PMS 340C	Lime PMS 367C	Maroon PMS 490C	Navy PMS 2380C	Neon Blue PMS 801C	Neon Green PMS 902C	Neon Pink PMS 926C	Neon Yellow PMS 379C	Olive Drab Green PMS 7771C	Orange PMS 172C
Purple PMS 7672C	Red PMS 200C	Royal PMS 2133 C	Sangria PMS 2046C	Sapphire PMS 2185C	Team Purple PMS 669C	True Royal PMS 7687C	White PMS WHITE	Woodland Brown PMS NO MATCH		