



OGIO® Ladies Luuma Tank. LOG801



This versatile tank drapes for easy movement.

- 4.1-ounce, 75/20/5 poly/TENCEL™ Lyocell/spandex jersey with stay-cool wicking technology
- OGIO heat transfer label for tag-free comfort
- Self-fabric neck and armholes
- Keyhole details at back
- Iridescent heat transfer O on front left hem
- Side vents

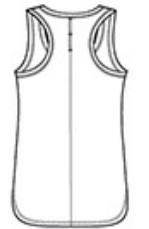
TENCEL is a trademark of Lenzing AG.

CARE INSTRUCTIONS

Machine wash cold with like colors; only non-chlorine bleached when needed, tumble dry low, do not use fabric softener, remove promptly, cool iron if necessary, do not dry clean.

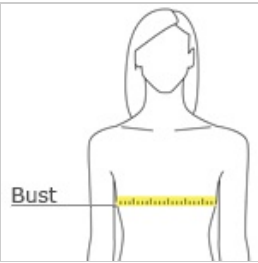


front



back

HOW TO MEASURE



BUST

Measure under the arm and around the fullest part of the bust with arms down, keeping tape horizontal.

SIZE CHART

	XS	S	M	L	XL	2XL	3XL	4XL
Size	2	4/6	8/10	12/14	16/18	20/22	24/26	28/30
Bust	32-34	35-36	37-38	39-41	42-44	45-47	48-51	52-55

COLOR INFORMATION



Blacktop
PMS NTR BLACK
C



Diesel Grey
PMS 7540C



Lilac Heather
PMS 2054C



Petrol Grey
Heather
PMS COOL GRAY
10C