

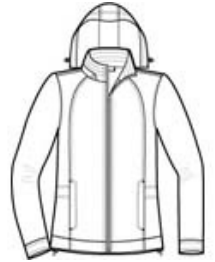


Build the team—or recognize those you depend on—with the Successor™ Jacket. This business-to-casual style has a modern look and a soft, quiet hand. Designed with a zip-off hood, this multitasking jacket is versatile enough for mild wind and rain protection.

- 100% polyester with PU coating
- Polyester lining throughout
- Zip-off hood with draw cord and toggles
- Interior zippered pocket
- Front zippered pockets
- Adjustable snap cuffs
- Open hem with locking draw cords
- Port Pocket™ for easy embroidery access

**CARE INSTRUCTIONS**

Machine wash cold. Do not bleach or dry clean. Do not tumble dry.

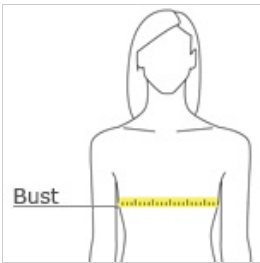


front



back

**HOW TO MEASURE**



**BUST**

Measure under the arm and around the fullest part of the bust with arms down, keeping tape horizontal.

**SIZE CHART**

	S	M	XS	XXL	3XL	4XL	L	XL
Size	4/6	8/10	2	20/22	24/26	28/30	12/14	16/18
Bust	35-36	37-38	32-34	45-47	48-51	52-55	39-41	42-44

**COLOR INFORMATION**