

*Eddie Bauer*

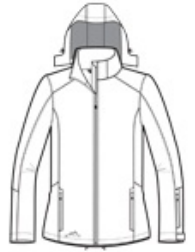
# Eddie Bauer® Ladies Hooded Soft Shell Parka. EB537



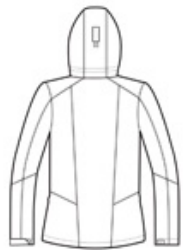
This longer-length parka offers very good water protection and breathability thanks to a 3K/3K fabric. A detachable hood and articulated sleeves make this parka a cold-weather must-have. 3000MM fabric water protection rating, 3000G/M<sup>2</sup> fabric breathability rating, interior storm flap, chin guard, reverse coil zippers, front zippered pockets, adjustable tab cuffs with hook and loop closures and an open hem with locking draw cords. Princess seams, reverse coil zippered left sleeve pocket, contrast Eddie Bauer logo on right hem. Made of a 96/4 poly/spandex shell bonded to a water-resistant laminated film and a 100% polyester microfleece interior.

### CARE INSTRUCTIONS

Machine wash cold. Only non-chlorine bleach when needed. Tumble dry low. Cool iron if necessary. Do not dry clean.



front



back

### HOW TO MEASURE



### BUST

Measure under the arm and around the fullest part of the bust with arms down, keeping tape horizontal.

### SIZE CHART

|      | XS    | S     | M     | L     | XL    | 2XL   | 3XL   | 4XL   |
|------|-------|-------|-------|-------|-------|-------|-------|-------|
| Size | 2     | 4/6   | 8/10  | 12/14 | 16/18 | 20/22 | 24/26 | 28/30 |
| Bust | 32-33 | 34-35 | 36-37 | 38-40 | 41-43 | 44-46 | 47-49 | 50-52 |

### COLOR INFORMATION



Admiral Blue  
PMS 534C



Black  
PMS NTR BLACK  
C



Grey Steel  
PMS 7540C