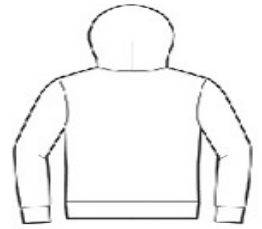




- Retail fit
- Tear-away label
- White draw cords
- Side seamed
- Kangaroo pockets
- Rib knit cuffs and hem
- Solid Colors and Heather Colors: 8-ounce, 52/48 Airlume combed and ring spun cotton/poly fleece, 32 singles
- Athletic Heather: 8-ounce, 90/10 Airlume combed and ring spun cotton/poly fleece, 32 singles
- Heather Navy: 8-ounce, 60/40 Airlume combed and ring spun cotton/poly fleece, 32 singles
- DTG Colors: 8-ounce, 70/30 Airlume combed and ring spun cotton/poly fleece with 100% cotton face for printability



front

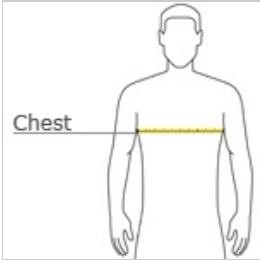


back

CARE INSTRUCTIONS

Machine wash warm, inside out, with like colors. Only non-chlorine bleach. Tumble dry low. Medium iron. Do not iron decoration. Do not dry clean.

HOW TO MEASURE



CHEST WIDTH

Measure under the arm and around the fullest part of the chest with arms down, keeping tape horizontal.

SIZE CHART

| | XS | S | M | L | XL | 2XL |
|-------|-------|-------|-------|-------|-------|-------|
| Chest | 31-34 | 34-37 | 38-41 | 42-45 | 46-49 | 50-53 |

COLOR INFORMATION

| | | | | | | | | | | |
|--|---|---|---|---|---|---|--|---|---|---|
|  |  |  |  |  |  |  |  |  |  |  |
| Ash PMS 428CP | Athletic Heather PMS COOL GREY 5UP | Black PMS Black C | Black Heather PMS Black 7CP | DTG Black PMS BLACK 3C | DTG Dark Grey PMS COOL GREY 11CP | DTG White PMS WHITE C | Dark Grey PMS 432 CP | Dark Grey Heather PMS 7540CP | Deep Heather PMS 2333CP | Heather Deep Teal PMS 7699C |
|  |  |  |  |  |  |  |  | | | |
| Heather Forest PMS 567U | Heather Navy PMS 296UP | Heather True Royal PMS 2388U | RoyalMaroon PMS 7643C | Navy PMS 533C | Peach PMS 2016UP | Red PMS 200C | True Royal PMS 7684CP | | | |