

PORT AUTHORITY.

Port Authority® Easy Care Tuxedo Apron with Stain Release. A704

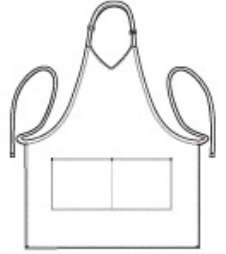


The tailored, upscale look of the tuxedo v-neck--along with its stain and wrinkle protection--makes this the apron of choice for servers or front-of-the-house workers.

- 8-ounce, 65/35 poly/cotton twill
- Adjustable neck strap
- Two front pockets
- 27.5"w x 30"l

CARE INSTRUCTIONS

Machine wash warm, do not bleach. Tumble dry low.



front

SIZE CHART

	OSFA
Length	30
Apron Waist Width	27 1/2
Apron Width at Top	10 1/2
Pockets	8 1/2 x 17

COLOR INFORMATION



Black
PMS NTR BLACK
C