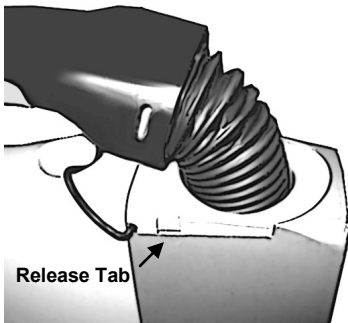


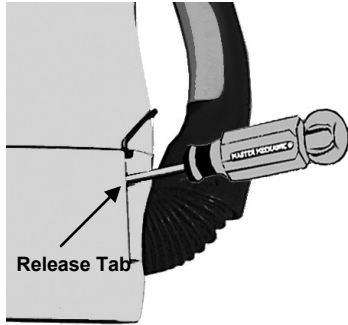


# Cabinet Installation Instructions

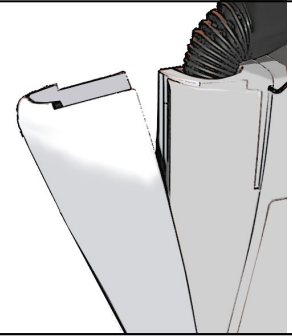
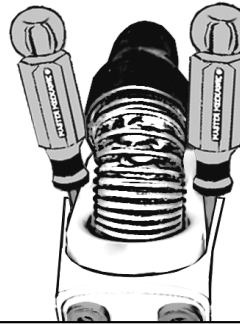
1.



Release Tab

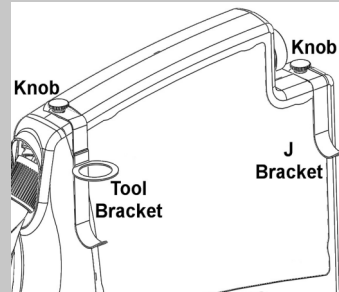


Release Tab



Before installing, remove bracket from the bottom of the Vroom by inserting a flat blade screwdriver into the release tabs located on each side of the mounting bracket as shown.

5.



Knob

Knob

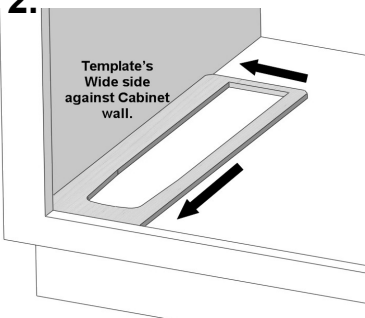
Tool Bracket

J Bracket

**\*Not available with all models.**

Attach accessory brackets as shown.

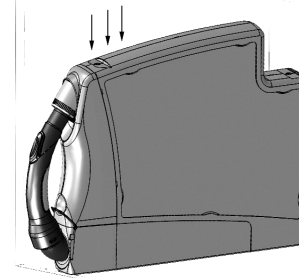
2.



Template's Wide side against Cabinet wall.

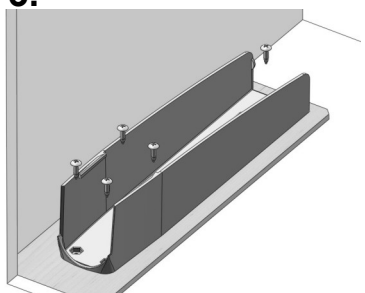
Locate cardboard template inside the cabinet. Place template's wide side against cabinet wall.

6.



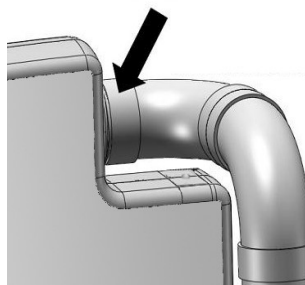
Install the Vroom in the mounting bracket by pushing it into place as shown. It will snap in place when installed correctly.

3.



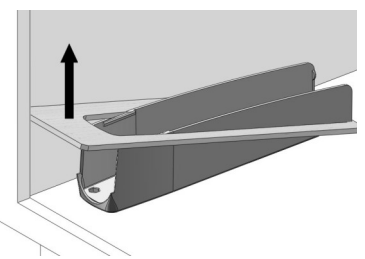
Place mounting bracket in template. Secure with 5 screws as shown.

7.



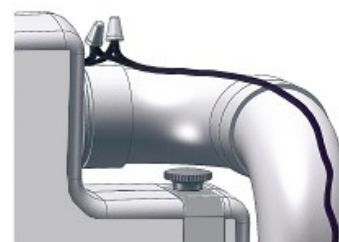
Connect the vacuum tubing to the Vroom's connector on the back as shown. **Do NOT glue, press fit only for service reasons.**

4.



Remove the cardboard template.

8.



Connect the low voltage wires on the back of the unit.

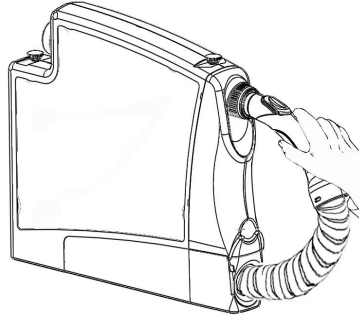


# Using Your New Vroom

1.

### Turn it on.

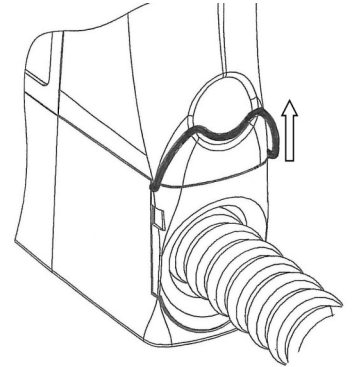
Just lift the handle until the Vroom clicks on. Then pull out the handle.



4.

### When Finished

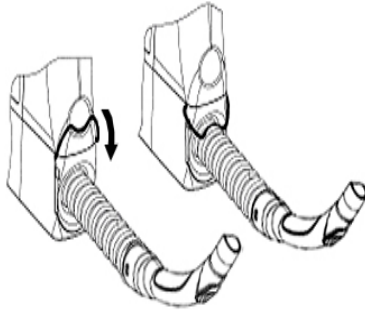
Flip up the hose lock.



2.

### Lock the Hose

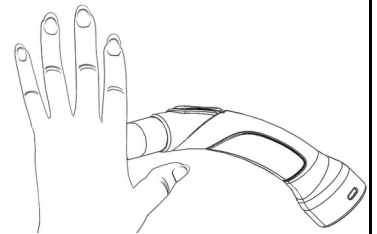
Pull out as much hose as you want. Then flip the Hose Lock down (as shown) to hold it in place.



5.

### Retract the Hose

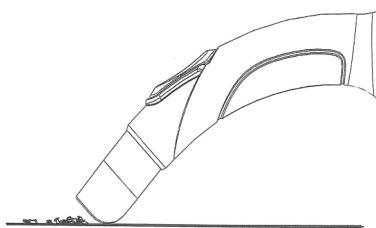
Cover the handle end with your hand. The Vroom Hose retracts automatically.



3.

### Vacuum with the Handle

The rounded edge of the handle means you can vacuum without an attachment.



6.

### Store the Handle

Place the handle inside the green hose dock and lower it into the storage position as shown. Vroom turns off automatically.

