

Actreen® Hi-Lite Set



EN Instructions for use

DE Gebrauchsanweisung

ES Instrucciones de uso

FR Mode d'emploi

IT Istruzioni per l'uso

NL Gebruiksaanwijzing

BG Инструкции за употреба

CA Mode d'emploi

CS Návod k použití

DA Brugsanvisning

EL Οδηγίες χρήσης

FI Käyttöohje

HU Használati útmutató

LV Lietošanas instrukcija

NO Bruksanvisning

PT Instruções de Uso

RO Instrucțiuni de folosire

RU Инструкция по применению

SK Pokyny na použitie

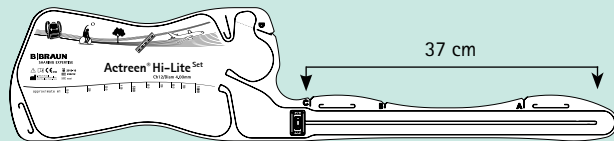
SV Bruksanvisning

TR Kullanma talimatları

B | BRAUN

EN INSTRUCTIONS FOR USE

Actreen® Hi-Lite Set is a sterile prelubricated, ready-to-use set with non-return valve indicated for intermittent urinary catheterisation.



UNFOLD THE SET BY TEARING OFF THE STICKER.

IF YOU WANT TO RELEASE ALL THE CATHETER:

- Grip and tear off the film at mark "C"
- If you have reduced dexterity, with one hand, hold the connector and with the other hand insert your thumb in the eyelet at mark "C" in order to pull off the protective sheath.



OR



1. PREPARATION:

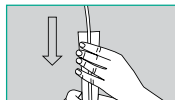
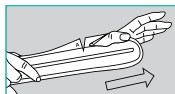
- Carefully wash hands before and after catheterisation, and clean the area surrounding the urethral opening.

2. OPENING OF THE CATHETER:

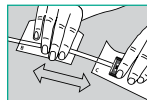
- If you have good dexterity, grip and tear off the film at mark "A".
- If you have reduced dexterity, with one hand, hold the catheter and with the other hand insert your thumb in the eyelet at mark "A" in order to pull off the protective sheath.
- Then, fold up the sheath into accordion folds without touching the catheter.



OR



For a simplified no touch technique release a movable sheath by gripping and tearing off the film at marks B and C.



3. CATHETERISATION:

MALE

- With one hand hold the penis upwards to decrease the curvature of the urethra.
- With the other hand carefully introduce the catheter into the urethra until it reaches the bladder and the urine drains into the bag.

FEMALE

- With one hand spread the greater lips of the vagina to locate the urethral opening.
- With the other hand carefully introduce the catheter into the urethra until it reaches the bladder and the urine drains.
- Manual pressure on the lower abdomen towards the end of catheterisation will ensure that the bladder is completely emptied.
- When the bladder is completely empty, gently withdraw the catheter.

4. EMPTYING:

- To empty the bag, tear off along the dotted line located on the bag.
- To discreetly dispose of Actreen® Hi Lite Set, refold the set and reposition a part of the sticker to close it.
- Then discard the catheter according to the current local regulations.

