

Mepilex[®] Border Heel

Product application guide



Mepilex[®] Border Heel


Mölnlycke[®]

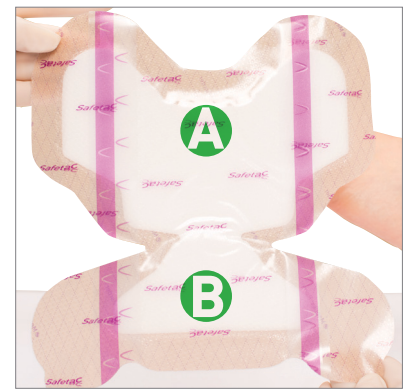
Product application guide

Note

In case of clinical signs of infection, the use of Mepilex® Border Heel may be continued if proper treatment for infection is initiated. Do not use dressing with dry, intact eschar.

Prepare the area:

Cleanse intact skin. Dry the surrounding skin thoroughly. Ensure that skin is free of dimethicone, skin sealants and emollients. Use of skin barrier under dressing is not necessary.



1. After the skin/wound is prepared, dry the area thoroughly. Then remove the central backing and slide the dressing under the heel to the desired location.



2. Apply the adherent part of the dressing marked 'A' (see illustration above) to the posterior heel/Achilles tendon areas, positioning the narrowest part of the dressing at the base of the heel. Do not stretch.



3. Remove the backing from one of the area 'A' flaps (ankle flaps). Apply and smooth. Repeat with the other side. Do not stretch.



4. Gently apply the adherent part of the dressing marked 'B' (see illustration above) under the plantar surface of the foot. Do not stretch.



5. Remove the backing from one of the area 'B' flaps (flaps with tabs). Apply and smooth border. Repeat with the other side. Do not stretch.



6. Press and smooth the dressing to ensure the entire dressing is in contact with the skin.

Tips and tricks

- **Think 'A'** for 'Achilles' to remember how to apply the dressing correctly.
- Apply the dressing to clean, dry skin.
- Do not stretch the dressing during application.
- Apply a non-skid sock if patient is ambulatory, this will also improve stay-on-ability.
- If the patient is mobile and walking around, we would recommend appropriate non-slip footwear to reduce the risk of falls.
- Consider the use of Tubifast® or other tubular bandages as extra support for very agitated patients or for those where the dressing comes off prematurely: the dressing is designed with the intention of being gentle to the skin.

Pressure injury prevention re-application guide



1. Gently pull handling tabs to release dressing from skin.



2. Continue to release the dressing from the skin using the handling tabs until the skin is exposed for skin check.



3. While maintaining the dressing position at the proximal edge of 'A' (see picture), perform assessment of the skin.



4. Re-apply the foam and border of the dressing. Make sure the flaps with the tabs are placed over the ankle flaps.



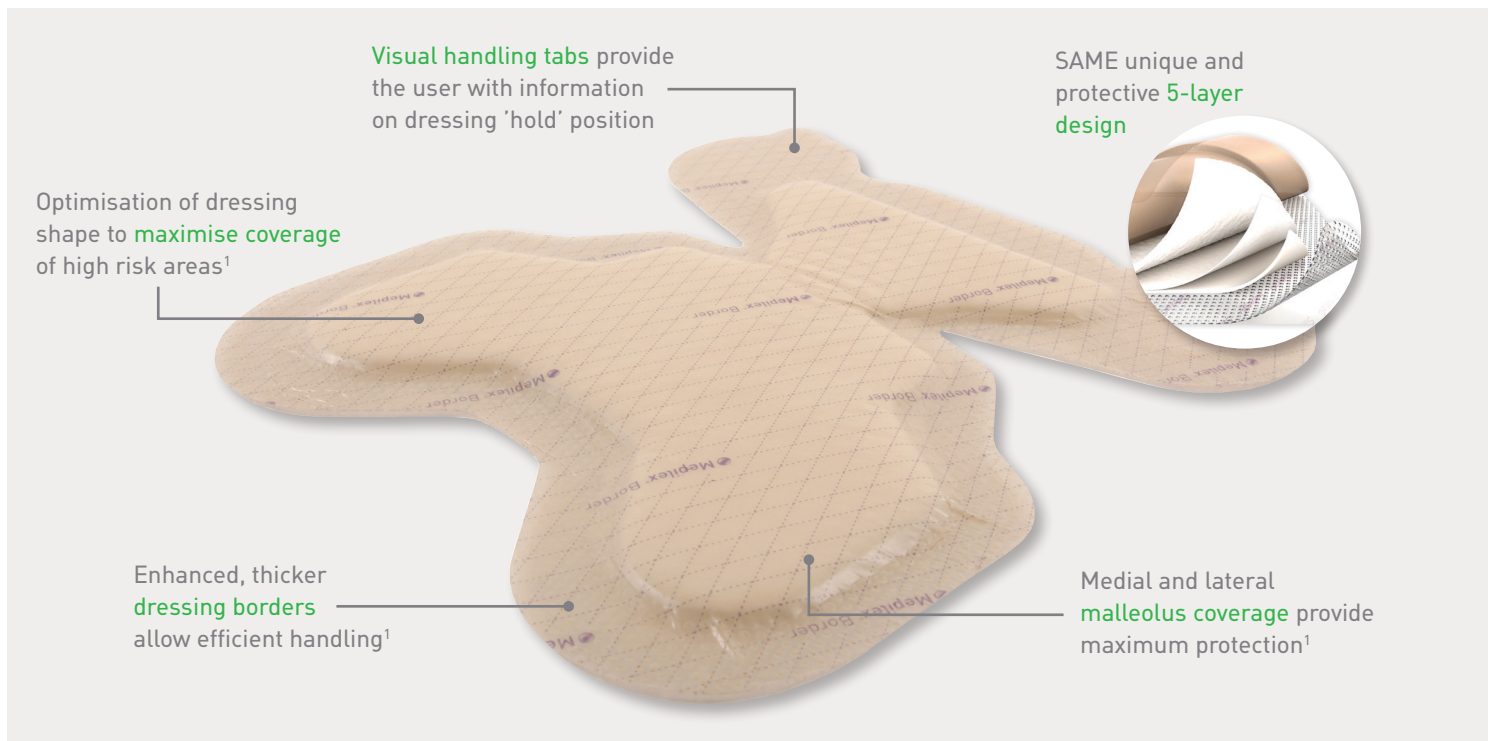
5. Confirm dressing is replaced to its original position, making sure the border is intact and flat.



6. Press and smooth the dressing to ensure the entire dressing is in contact with the skin.

7. Re-apply non-skid sock if using, especially for ambulatory patients. If the patient is mobile and walking around, we would recommend appropriate non-slip footwear to reduce risk of falls.

How Mepilex® Border Heel works



Prevention

Mepilex® Border Heel is an all-in-one foam dressing shaped to fit the heel and protect the areas around the heel, Achilles and bilateral malleoli. When used for prevention* it will aid in protecting the skin from damage caused by pressure, shear and friction². The Safetac® technology layer protects the skin by maintaining optimal positioning and by limiting friction and shear at the patient-dressing interface². The Safetac® technology layer allows for repositioning of the dressing after skin inspection.

Benefits

- ✓ Handling tabs for easier skin checks
- ✓ Slightly thicker border for better handling and stay-on-ability
- ✓ Self-adherent – no secondary fixation needed
- ✓ Shaped to fit heels – no need to cut or adapt

Areas of use

Mepilex® Border Heel is designed to be applied on the heel for the prevention of skin damage or during treatment of exuding wounds including pressure injuries, diabetic foot ulcers, heel ulcers, traumatic wounds and other secondary healing wounds.

Treatment

Mepilex® Border Heel, when used for treatment, effectively absorbs and retains exudate³ and maintains a moist wound environment. The Safetac® technology layer seals the wound edges, prevents exudate leakage onto the surrounding skin, thus minimising the risk of maceration⁴. The Safetac® technology layer allows the dressing to be changed without damaging the wound or surrounding skin,⁵ or exposing the patient to additional pain⁶.

- ✓ Minimises pain and trauma at dressing changes^{5, 6, 7}
- ✓ Medial and lateral malleolus coverage to provide maximum protection
- ✓ Can remain in place for several days
- ✓ Can be adjusted without losing its adherent properties

Mepilex® Border Heel ordering information‡

Product code	Size	Pcs/box
282750	22 x 23cm	6

‡ Packaged sterile in single packs

* When used as a part of an overall prevention protocol

References: 1. Davies P. User evaluation of interface dressings for pressure ulcer prevention. Mölnlycke Health Care [GMCS-2017-058] 2017. 2. Black J. et al. Consensus statement: Global evidence based practice recommendations for the use of wound dressings to augment pressure ulcer prevention protocols, August 2012. 3. Feili F. A laboratory evaluation of the fluid management capacities of absorbent foam dressings. Poster presentation at EWMA conference, Vienna, Austria, 23-25 May 2012. 4. Wiberg A.B. et al. Preventing maceration with a soft silicone dressing: in-vitro evaluations. Poster presented at the 3rd Congress of the WUWHS, Toronto, Canada, 2008. 5. White R. et al. Evidence for atraumatic soft silicone wound dressing use. Wounds UK, 2005. 6. White R. A multinational survey of the assessment of pain when removing dressings. Wounds UK 2000;4(1). 7. Dykes et al. Effects of adhesive dressings on the stratum corneum of the skin. Journal of Wound Care February, 2001;10(2).

www.molnlycke.com.au | www.molnlycke.co.nz

Mölnlycke Health Care, 12 Narabang Way, Level 4, Belrose, NSW, 2085. Phone 1800 005 231. www.molnlycke.com.au. New Zealand Orders & Enquiries 0800 005 231, www.molnlycke.co.nz. The Mölnlycke, Mepilex and Safetac trademarks, names and logos are registered globally to one or more of the Mölnlycke Health Care Group of Companies. © 2020 Mölnlycke Health Care AB. All rights reserved. AUWCP0033

