

# Stays on

Uniquely conforms



Mepilex<sup>®</sup> Border Flex

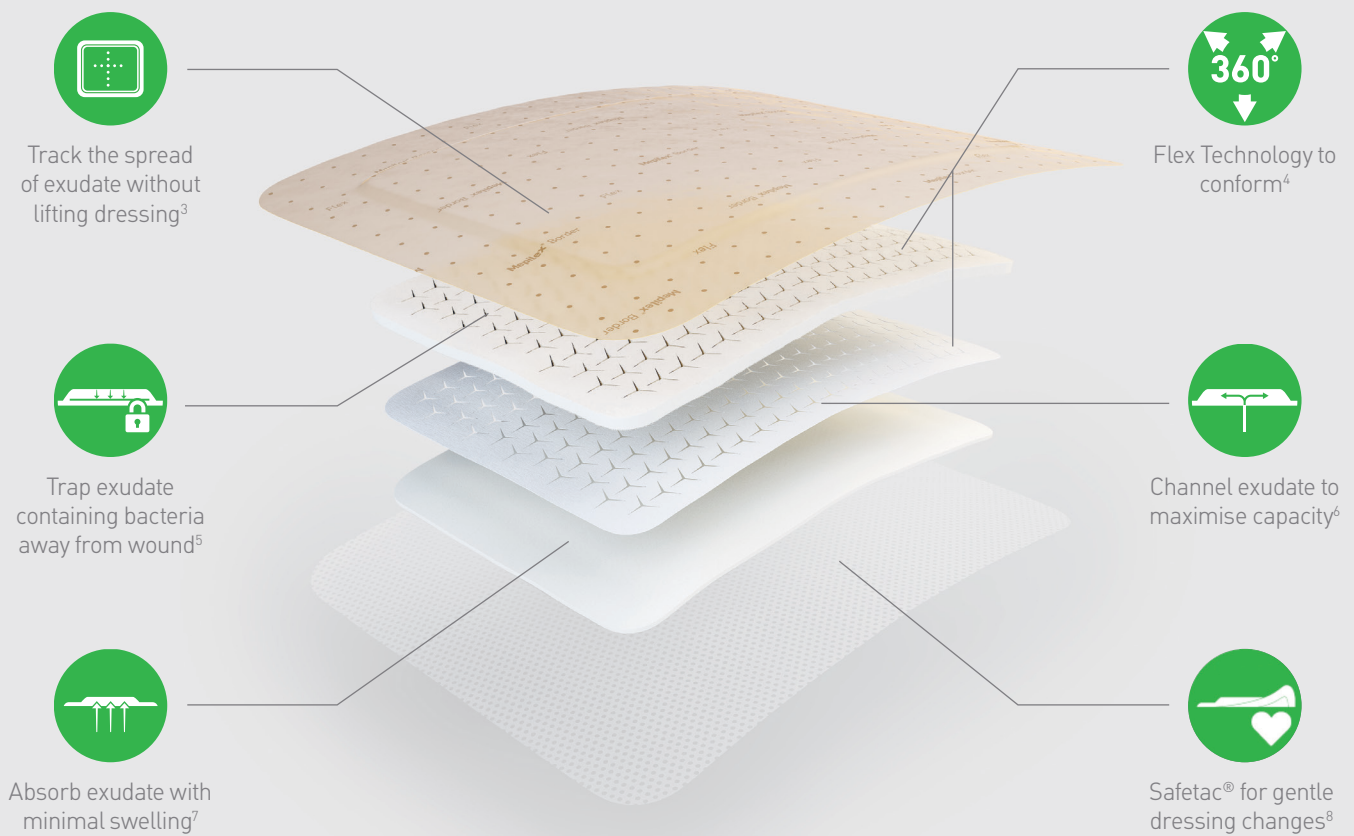
Our next generation of flexible dressings



Wounds need to heal. Patients need care. Nurses need time. Budgets are tight. The challenge is finding a dressing that is comfortable and stays on as long as it is needed.

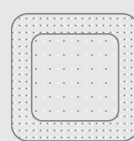
## Introducing the Mepilex® Border Flex range

Our next generation of flexible dressings are designed to stay on and uniquely conform; giving time back to nurses, cost savings back to managers and quality of life back to patients<sup>1,2</sup>.

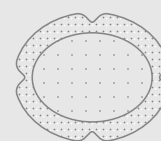


### Choose the right dressing for your patient's needs

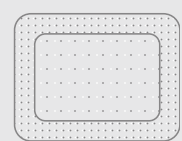
Designed for a wide range of exuding wounds including: leg and foot ulcers, traumatic wounds (e.g. skin tears) and surgical wounds, as well as part of a prophylactic therapy to help prevent skin damage, e.g. pressure injuries.



Square



Oval



Rectangular

Up to 1/3 of patients complain that their dressing needs changing daily<sup>9</sup>.

## Smart exudate management

Giving you confidence to leave the dressing on for longer and still maintain an optimal wound healing environment.

AS MUCH AS

**2.2x**

**greater exudate handling** compared to other tested foam dressings<sup>12</sup>



### 1. Rapid absorption with minimal swelling:

The foam layer allows rapid absorption of both normal and viscous exudate<sup>10,11</sup> and it is better at handling exudate than comparable dressings<sup>12</sup>.



### 2. Maximises capacity by channelling exudate:

Exudate is channelled away from the wound and over a wider area to increase moisture vapour loss and reduce swelling<sup>6,7</sup>.



### 3. Traps bacteria away from the wound:

The superabsorbent fibres in the retention layer prevent exudate containing bacteria from re-entering the wound bed, even under compression<sup>5</sup>. Backing film prevents entry of external bacteria<sup>13</sup>.



### 4. Tracks exudate without dressing removal:

The Exudate Progress Monitor allows the spread of exudate to be objectively assessed and recorded, without disturbing the wound<sup>3</sup>.

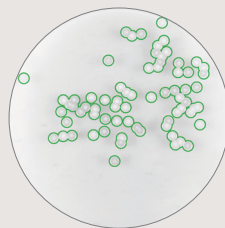
## Fighting recontamination

Bacteria trapping in action: Mepilex<sup>®</sup> Border Flex **releases up to 22 times less bacteria** than other dressings<sup>14</sup>



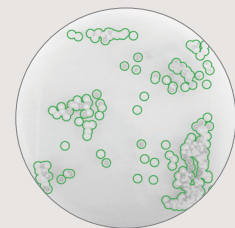
A

Mepilex Border Flex after 1 hour of contact, number of bacterial colonies: between zero and the low single digits <sup>\*15,16</sup>.



B

Sorbact<sup>®</sup> Foam Gentle Border after 1 hour of contact, number of bacterial colonies: about 70 bacterial colonies <sup>\*15</sup>.



C

Cutimed<sup>®</sup> Siltec<sup>®</sup> Sorbact<sup>®</sup> after one hour of contact, number of bacterial colonies: too numerous to count <sup>\*16</sup>.

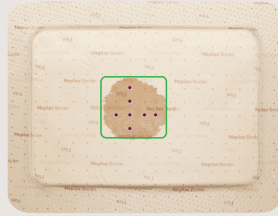
\*In vitro studies comparing the ability to trap bacteria in the dressing when exposed to pressure. The pictures show bacteria on agar plates. The in vitro tests do not compare the bacterial binding effect between Sorbact<sup>®</sup> and Mepilex<sup>®</sup> Border Flex. Other functions relating to managing bacteria have not been subject to the comparison. These are in vitro tests, the clinical relevance has not been investigated.

## How the Exudate Progress Monitor works

Leaving wounds undisturbed can help healing. The Exudate Progress Monitor gives you the confidence to leave the dressing in place for longer<sup>3</sup>.

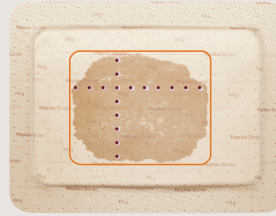


The Exudate Progress Monitor is a grid of equidistant dots.



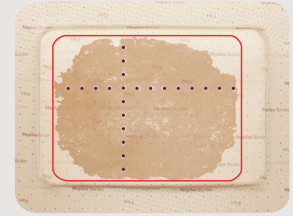
**e.g. 4 x 4cm**

As exudate spreads you can record a dot count that reflects exudate volume in the dressing.



**e.g. 8 x 10cm**

You can then refer to the recorded dot count to help monitor exudate trends.



**e.g. 10 x 13cm**

Consider dressing change when exudate is approaching the borders of the dressing.\*

**\*Wound inspection and dressing change frequencies are driven by clinical decision and should be at the discretion of the treating clinician**

Note: All images are stylised for ease of visualisation. Exudate Progress Monitor dots do not change appearance with/without exudate.

9/10 patients feel their wound impacts their quality of life<sup>9</sup>.

**SafetaC**  
TECHNOLOGY

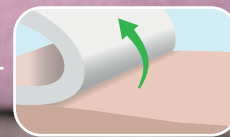
## Reduced pain and damage to the skin

All Mepilex<sup>®</sup> Border Flex dressings seek to reduce trauma caused by dressing changes. This is made possible by our proven Safetac<sup>®</sup> soft silicone wound contact layer, which **minimises pain and damage to the skin and the risk of maceration** compared with traditional (adhesive) dressings<sup>8,17,18</sup>.

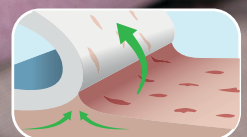
MORE THAN

**9/10**

patients preferred dressings with **Safetac** over other dressings with traditional adhesives<sup>8</sup>



Safetac minimises skin stripping



Skin stripping occurs with traditional adhesive

More than half (58%) of patients complain that their dressing pulls or does not move with their body<sup>9</sup>.

## Designed to conform and stay on

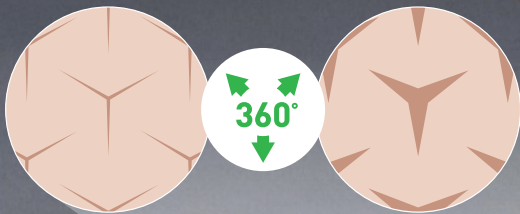
Thanks to Flex Technology, the unique conformability of Mepilex<sup>®</sup> Border Flex allows it to adapt to the shape and movement of the patient<sup>4</sup>. Reducing pressure on the skin and pull on the borders increases comfort and minimises the risk of detachment<sup>19</sup>.

**And it is water-resistant so your patients can shower<sup>20</sup>.**



## Unique Flex Technology = 360° flexibility

Y-cuts expand to allow movement:

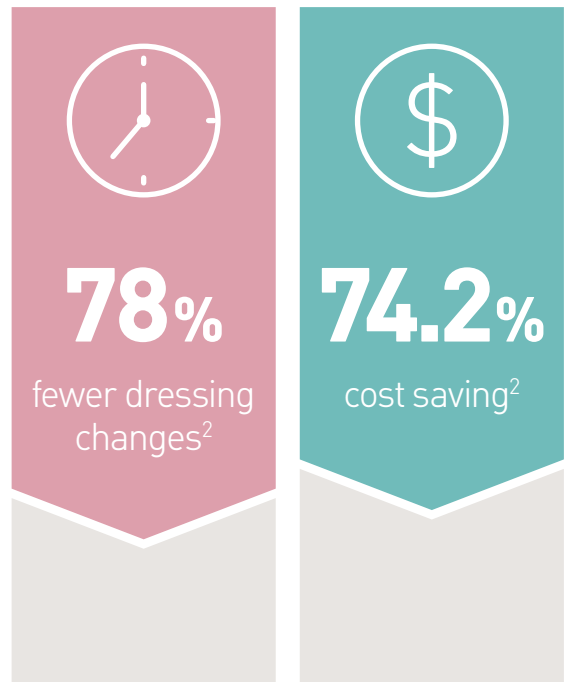


**UP TO 11x**  
more flexible  
than other foam  
dressings<sup>4</sup>.



# Mepilex® Border Flex can make a positive impact on your budget

Every unnecessary dressing change comes at a cost, from the care hours and material waste, to the patient's discomfort. In a quality improvement project (QIP) performed during one year, it was observed that Mepilex Border Flex can, as part of other improvement processes implemented, help reduce these costs by staying on for longer, supporting patients and carers in achieving their healing and budget goals<sup>1</sup>. In another recent QIP performed during six months it was observed that dressing utilisation was reduced in the group using Mepilex Border Flex vs. the group with formulary dressing, decreasing the total cost of care and giving time back to nurses<sup>2</sup>.



Learn more about Mepilex Border Flex [here](#)



Square

Product code	Size (cm)	Pad size (cm)	Pcs/Box
595211	7.5 x 7.5	4.5 x 4.5	10
595311	10 x 10	6.5 x 6.5	10
595011	12.5 x 12.5	8.5 x 8.5	10
595411	15 x 15	11 x 11	10
595611	15 x 20	11x16	10



Oval

Product code	Size (cm)	Pad size (cm)	Pcs/Box
583500	7.8 x 10	3.5 x 5.5	5
583300	13 x 16	9 x 12	5
583400	15 x 19	11 x 15.2	5

References: 1. Nelson, D. A New Bordered Foam Dressing Technology Improves Wound Outcomes and Satisfaction While Reducing Dressing Utilization in Acute Care. Poster Presentation at WOCN Annual Meeting, Nashville, 2019. 2. Tyson, L. Study First: Driving the Case for Improving Hospital Wound Care. Poster Presentation at WOCN Annual Meeting, Nashville, 2019. 3. Mölnlycke Health Care. Mepilex® Border Flex – Estimate of spreading area using dot pattern on backing film. Report no. PD-528872. Data on file. 4. Mölnlycke Health Care. Mepilex® Border Flex Product Manual – Conformability PD-528870. Data on file. 5. Mölnlycke Health Care. Mepilex® Border Flex-Bacteria encapsulation. Report no. PD-537072. Data on file. 6. Mölnlycke Health Care. Mepilex® Border Flex Product Manual – Spreading layer PD-528874. Data on file. 7. Mölnlycke Health Care. Product Manual – Maintained dressing profile. Report no. 525458. Data on file. 8. White, R. A multinational survey of the assessment of pain when removing dressings. Wounds UK 2008;4(1):14-22. 9. Opinion Matters 'Professional Health Care Treatment for Wounds' survey conducted June-July 2018 in UK. Data on file. 10. Mölnlycke Health Care. Mepilex® Border Flex – Absorption and dispersion tests on inclined plane, viscous test solution. Report no. PD-528871. Data on file. 11. Mölnlycke Health Care. Product manual Initial abs different test solutions. Report no. PD-535352. Data on file. 12. Mölnlycke Health Care. Mepilex® Border Flex – Fluid handling capacity compared to Urgotul® Foam Absorb Border, Aquacel® Foam, Allevyn® Gentle Border, Allevyn® Life, Optifoam® Gentle, KerraFoam® Gentle Border. Report no. PD-527642. Data on file. 13. Mölnlycke Health Care. Product Manual Mepilex® Border Flex – Viral penetration. Report no. PD-535090. Data on file. 14. Karlsson, C et al. Bacterial trapping of a newly developed all-in-one soft silicone foam dressing. Poster. EWMA, Krakow. 2018. 15. Karlsson, C et al. A quantitative method for determination of bacterial trapping effect in wound dressings. Poster. EWMA, Krakow. 2018. 16. Mölnlycke Health Care. Cutimed. Report no. PD-551237. Data on file. 17. Woo, K., Coutts, P.M., Price, P., Harding, K., Sibbald, R.G. A randomised crossover investigation of pain at dressing change comparing foam dressings Advances in Skin and Wound Care 2009;22(7):304-310. 18. Meaume S. et al. A study to compare a new self-adherent soft silicone dressing with a self-adherent polymer dressing in stage II pressure ulcers. Ostomy Wound Management, 2003. 19. Mölnlycke Health Care. Mepilex® Border Flex – External data – FEM simulations MxB Flex vs Allevyn Life. Report no. PD-529747. Data on file. 20. Mölnlycke Health Care. Mepilex® Border Flex – Waterproofness. Report no. PD-532095. Data on file.

[www.molnlycke.com.au](http://www.molnlycke.com.au) | [www.molnlycke.co.nz](http://www.molnlycke.co.nz)

Mölnlycke, 12 Narabang Way, Level 4, Belrose, NSW, 2085. Phone 1800 005 231. New Zealand Orders & Enquiries 0800 005 231, [www.molnlycke.co.nz](http://www.molnlycke.co.nz). The Mölnlycke, Mepilex and Safetac trademarks, names and logos are registered globally to one or more of the Mölnlycke Health Care Group of Companies. ©2020 Mölnlycke Health Care. All rights reserved. AUWC\_IM001255\_V1

Allevyn is a registered trademark of Smith & Nephew. Aquacel is a registered trademark of ConvaTec Inc. Cutimed and Siltec are registered trademarks of BSN Medical. KerraFoam is registered trademark of Crawford Healthcare INC. Optifoam is a registered trademark of Medline Industries, Inc. Sorbact is a registered trademark of ABIGO Medical. Urgotul is a registered trademark of Urgo Medical.

