



**TRUNCATED DOMES DEPOT**  
**ADA & CALIFORNIA COMPLIANT**

All Products USA Made  Every Order Ships Free

## Detectable Warning System Aids The Visually Impaired

- Available in four (4) sizes: 2' x 2', 2' x 3', 2' x 4' and 2' x 5'.
- Flexible construction conforms to fit dips, slopes and inclines in sidewalks and walkways.
- Ultra-ADA Pads are designed for the visually impaired to feel the raised, truncated domes with their feet. This, in combination with the tapping cane, can alert them to a different surface than the surrounding concrete sidewalk and an upcoming intersection.
- Installs quickly and easily using adhesive and anchors (included).
- Better slip resistance than composites.
- Better impact resistance than composites.
- UNBREAKABLE.
- Complies with the Americans with Disabilities Act (ADA), 49 CFR 37.9.

Provide tactile warning surfaces which comply with the detectable warnings on walking surfaces section of the Americans with Disabilities Act.

Title 49 CFR Transportation, Part 37.9 Standards for Accessible Transportation Facilities, Appendix A, Section 4.29.2 Detectable Warnings on Walking Surfaces.

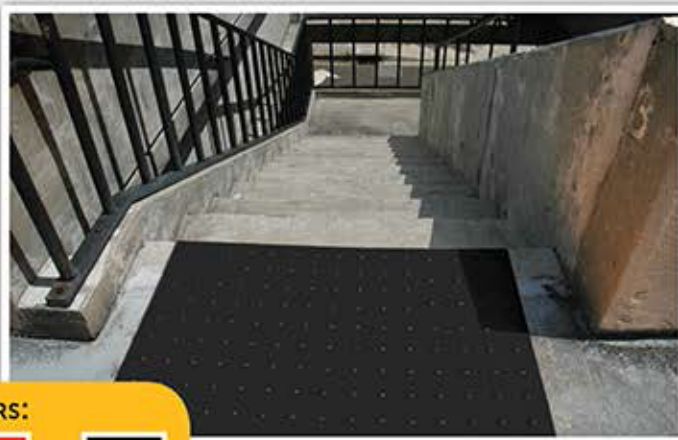
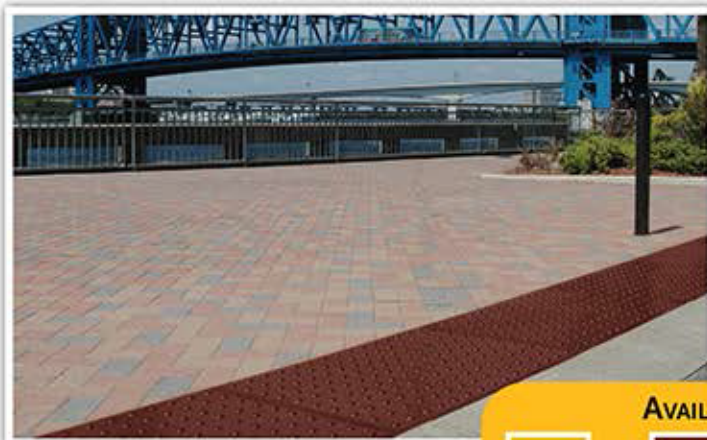


Flexible urethane material bends and conforms to slopes, curves and other irregularities.

### Ultra-ADA Pads, Urethane

Surface Mount (Retrofit)

Size ft. (mm)	Yellow	Brick Red	Safety Red	Black
2 x 2 (610 x 610)				
2 x 3 (610 x 914)				
2 x 4 (610 x 1,219)				
2 x 5 (610 x 1,524)				



#### AVAILABLE COLORS:



Yellow



Brick Red



Safety Red



Black

Custom Colors Also Available