



If you are experiencing any issues with your RCS Refrigerator please send pictures as depicted below so we may diagnose your issue quickly. Please include a copy/photo of your sales receipt.

[Click here for the RCS Care Form](#)

Also you may want to run down this check list:

- Is there a breaker or GFCI tripped causing no power to your unit?
- Do you have lights in the fridge but it is not cooling?

When you submit images of the refrigeration please include the following images



Image of the fridge inside the outdoor kitchen.

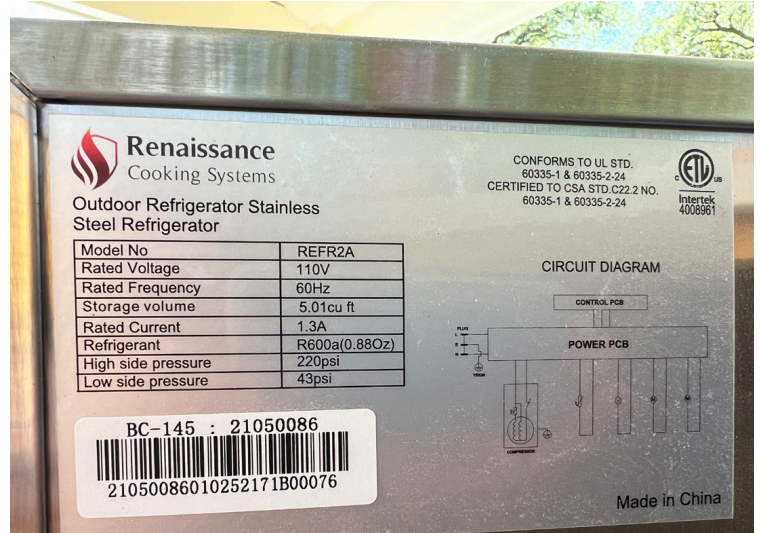


Image of the serial number, located on the back of the fridge.

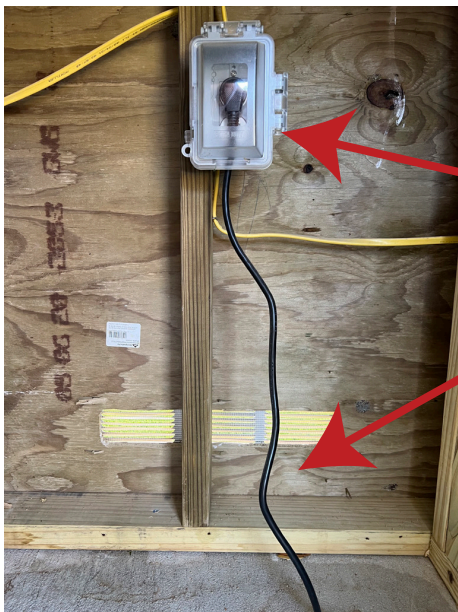


Image inside the outdoor kitchen showing how the fridge is plugged in and an image of the vents on the kitchen.