



AMERICA'S FIRST AND BEST BUILT GAS GRILL FOR OVER 60 YEARS

FAMILY OWNED & OPERATED SINCE 1957



Walter Koziol & daughter,
Nacy Koziol, standing with
the first Outdoor Gas Grill
in 1960.

Proudly carrying on what was started back in 1957, we remain focused on bringing you the best quality, innovation, design and construction backed by the best warranties in the industry.



Why MHP Grills? In a word... **Quality**

DESIGN & CONSTRUCTION

- Proudly made in the USA
- MHP Grills average a life span of 20+ years (Industry average is 4 years)
- Constructed of commercial grade 304 stainless steel & cast aluminum for lasting durability
- Our cast aluminum & commercial grade 304 stainless steel design withstand the elements better than any other material

GRILLING EXPERIENCE

- Porcelain briquettes provide consistent even heat distribution & minimize flare-ups
- Cast Aluminum housing provide ultimate heat retention
- Choose grill features & add optional upgrades to customize for specific needs

LIFETIME SERVICE

- Backed by one of the most comprehensive lifetime warranties in the industry
- Quality materials & construction mean easier to maintain & less to replace
- Perform maintenance easily on an MHP Grill for a lifetime of service
- Friendly & knowledgeable customer service dealers readily available for the lifetime of the grill

**UNIQUE FEATURES FOR
THE ABSOLUTE FINEST
QUALITY AND
UNMATCHED COOKING
PERFORMANCE**



**Porcelain Briquettes &
Stainless Steel Rock Grate**

Long lasting Flavor Master briquettes are kiln fired at 2,400 degrees providing food with a cleaner, fresher barbecue flavor, are self-cleaning & will not rust. For long life, our stainless steel heavy-duty Rock Grate provides maximum durability & heat retention.



**Sta-Kool Stainless Steel
Handle**

Our quality Sta-Kool handle stays cool to the touch & rolls when you open the hood.



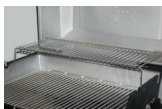
Electronic Ignition

With a specially designed stainless steel collector box, gas and air are combined to provide faster starts from either side of the burner. Battery included.



**Solid Cast Aluminum
Housing**

Permanent mold cast aluminum housing (not die-cast) allow greater thickness while providing years of endurance & unmatched cooking performance. High-temp powder-coat finish provide lasting beauty & durability.



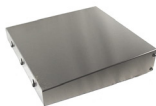
**Stainless Steel Swing-
Away Warming Rack**

Standard on most of our models. Can be used to keep items warm or as a secondary cooking surface.



**Built-in Shish Kabob
Skewer Holders**

Grilling the perfect Shish Kabob just got easier. Built-in slots allow easy turning for consistent grilling.



**Stainless Steel
Drop-Down Shelves**

Each drop-down shelf comes with built-in utensil holders. Extremely durable & FDA approved. JNR models includes one shelf, all other models include two shelves.



Brass Valves

Solid brass valves with infinite settings allow for a wide range of temperatures from high to low & offer superior corrosion resistance.

**JNR & WNK Models
Grill Heads**



Model #WNK4DD



Model #JNR4DD

Need a grill that does not need to be replaced every few years?

The **JNR** and **WNK** models are built to last with solid, durable and rust-resistant heavy cast aluminum construction while providing even heat. All models combine our stainless steel H-burner, cooking grids, stainless steel briquette grate and porcelain briquettes to create a time-tested and reliable cooking system. While a variety of bases, cooking surfaces and upgrades allows customization for lifestyle, space and budget.

**Heavy-Duty Stainless
Steel Dual "H" Burner**



All grills are available in natural or propane gas. LP hose & regulator available on LP grill models only.

JNR4DD Overall Dimensions
22 1/2" W x 17" H x 24 1/2" D
(without shelves)

WNK4DD Overall Dimensions
26 3/4" W x 19" H x 24 1/2" D
(without shelves)

Cooking Area	495 Sq. In	642 Sq. In
BTU's	30,000	40,000
# of Burners (traditional)	1 Dual	1 Dual
# of Controlled Cooking Zones	2	2
Stainless Steel Drop-Down Shelves	1 Shelf	2 Shelves
Stainless Steel Warming Rack	Drop-In	Swing-Away
Stainless Steel Cooking Grids	Standard	Standard
SearMagic Cooking Grids	Available	Available

Tri-Burn & Hybrid Models Grill Heads



Model #W3G4DD | #WHRG4DD

You don't have to give up quality design and construction for grilling versatility. MHP offers a grill head design that is built to last with your choice of cooking system. All models feature our SearMagic Cooking Grids, a secondary cooking rack and electronic ignition.

Tri-Burn Cooking System

Three cast stainless steel oval burners and stainless steel heat plates with individual controls allows for more efficient indirect cooking. Available on the W3G4DD.

Hybrid Cooking System

Two in one grill for the ultimate in cooking versatility. Use the infrared burner for time-saving grilling and the cast stainless steel burners for traditional grilling. Available on the WHRG4DD.

All grills are available in natural or propane gas. LP hose & regulator available on LP grill models only.

Overall Dimensions

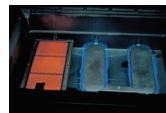
26 3/4" W x 19" H x 24 1/2" D
(without shelves)

W3G4DD WHRG4DD

Cooking Area	642 Sq. In	642 Sq. In
BTU's	41,934	41,934
Oval Cast Stainless Steel Burners	3	2
Infrared Burners	--	1
# of Controlled Cooking Zones	3	3
Stainless Steel Drop-Down Shelves	2 Shelves	2 Shelves
Stainless Steel Warming Rack	Swing-Away	Swing-Away
SearMagic Cooking Grids	Available	Available



Tri-Burner



Hybrid Burner



Searmagic Cooking Grids - Reversible

These high-performance, reversible, rust-free, anodized aluminum cooking grids heat up faster and cook foods at a uniform temperature. The ribbed side is perfect for steaks and burgers while the smooth side is ideal for delicate items such as fish or vegetables.

Mounting Options

MHP grills offer a variety of mounting applications allowing complete customization of the grill to fit a particular space, need and style.



MPP- 48" no-rust anodized aluminum in-ground post with stainless steel grease cup for grill head. 4" post fits all models & for Natural or LP gas installation.



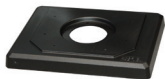
MPB- Anodized aluminum post & NuStone deck/patio base with stainless steel gas feed tubing & grease cup for grill head. 4" dia. post fits all models & for Natural or LP gas installation.



OCOL-B- One-piece black powder paint aluminum column includes stainless steel grease cup for grill head & conceals propane tank. Fits all models & OP/OM bases.



OCOL- One-piece commercial grade stainless steel column includes stainless steel access door, grease cup for grill head & conceals tank. Fits all models & bases.



OP*- Black Powder Painted cast aluminum portable base. Fits OCOLB & OCOL column. OPN Model has a 12 ft hose with quick disconnect coupler.



OM*- Black Powder Painted cast aluminum portable base with 8" rubber wheels and locking casters. Fits OCOLB or OCOL column. OMN Model has 12 ft hose with quick disconnect coupler.



NMSGS- Stainless steel grill enclosure sleeve only.

Fits WNK4, TJK2.

NMS2-GS- Fits W3G, T3G, WHRG, THRG, WRG, TRG



* Add N for NG or P for LP

Grill Accessories

Enhance & protect your outdoor grill. Our premium accessories have been designed specifically for our grills with quality materials & craftsmanship.



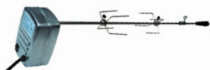
SBA3* - The premium Commercial grade stainless steel side burner is 12,000 BTU rated, has its own electronic ignition, and is factory assembled for simple bolt on installation. Fits JNR4DD, WNK4DD, WHRG4DD & W3G4DD.



MHPSEAR* - This 12,000 BTU stainless steel unit has a rust-free, anodized aluminum SearMagic® cooking grid that heats up faster and cooks food at a uniform temperature. The reversible grid provides increased cooking versatility. It also has an electronic ignition, pull-out drip tray and stainless steel cover. Fits JNR4DD, WNK4DD, WHRG4DD & W3G4DD.



GRRB3* - Infra-Roast Rotisserie Burner System. Infra-red rear burner heats up fast seals in juices for more moist results. Constructed of commercial grade stainless steel. Easy to install or remove for normal grilling. 12,000 BTU rated, has its own control. Burner is removable when not in use. Fits WNK4DD, WHRG4DD & W3G4DD.



RKMHP- Rotisserie kit includes RO6 stainless steel motor, motor mounting bracket, rotisserie rod, handle, bushing, forks & 3ft. cord. Max 25lb. balanced load. Fits JNR4DD, WNK4DD, WHRG4DD & W3G4DD.

Grill Covers

Our grill covers are constructed of a durable polyester lined vinyl, designed to protect your grills from the elements.



DDVPREM- Full length grill cover. Used with shelf position down. Fits JNR4DD, WNK4DD, WRG, W3G, WHRG, TRG,T3G, THRG.



HHCVPREM- Mid-length grill cover. Used with shelf position up. Fits JNR4DD.



GGCVPREM- Mid-length grill cover. Used with shelf position up. Fits WNK4DD, WHRG4DD, W3G4DD.



CV4PREM- Full length grill cover. Used with shelf position up. Fits WNK, WRG, TJK, TRG, T3G, WHRG, W3G, THRG.

Warranty

LIMITED LIFETIME WARRANTY ON THE FOLLOWING:

(Against Rust Through)

Top Casting • Bottom Casting • Control Panel • Side Shelf Brackets • Bottom Shelf Frame • Tank Ring • Cast Legs • Stainless Steel Fasteners • In-Ground & Patio Base Post • Stainless Steel & Black Aluminum Column • Stainless Steel Shelves • Stainless Steel Burners • Venturi Tubes • Stainless Steel & SearMagic® Cooking Grids • Stainless Steel & SearMagic® Warming Racks

10-YEAR WARRANTY ON THE FOLLOWING:

(LX Grill Series Warranty Against Rust Through)

Stainless Steel Body's, Smoker Tops, Lids, Carts, Cooking Grids, Stainless Steel Burners

5-YEAR WARRANTY ON THE FOLLOWING:

(Against Rust Through)

Infrared Burners • Stainless Steel Briquette Grates • Porcelain Briquettes

3-YEAR WARRANTY ON THE FOLLOWING:

(LX & Tri-burn Grill Series Warranty Against Rust Through)

Stainless Steel Heat Plates

1-YEAR WARRANTY ON THE FOLLOWING:

(Against Rust Through)

All other Components Including; Igniter System • Gas Valves • NuStone Side Shelves • NuStone Patio Base • Knobs • Porcelain Coated Briquette Grates • 30 Day Warranty on Paint
Anything not stated above falls under the 1-Year Warranty

There is a 1 year warranty on all parts if grills are put into commercial, multi-unit or community use.

WHAT IS NOT COVERED:

Transportation and shipping cost • Labor for replacement or repairs • Damage from accident, misuse, alteration, abuse, improper installation or storage • Removal and re-installation costs • Finishes on surface that are damaged by improper installation, improper storage, accident, misuse, abuse or alteration • Inoperable due to improper installation or storage • The costs of a service call to diagnose a problem • All warranties are non-transferable and apply only to the original purchaser • This warranty does not imply or assume any responsibility for consequential damages that might result from use, misuse, or improper installation of this cooking appliance. This warranty does not cover claims which do not involve defective workmanship or materials. Bill of sale, canceled check, or payment record should be kept to verify purchase date and establish warranty period.

CGProducts

(800) 833-5998 • CGProducts.com

18700 Carrot St. • Spring, TX 77379
Rodney@CGProducts.com • Franci@CGProducts.com