

### Standard Conditions of Sale

The catalogue description and any exhibition of samples are only broad indications of the Products and Drury Precision Engineering Limited may make design changes which do not diminish their performance or visual appeal and supplying them in such state shall conform to the order.

The Buyer acknowledges no representation or warranty (other than as to title) has been given or will apply to the Products other than those in Drury Precision Engineering Limited order or confirmation and the Buyer confirms it has chosen the Products as being of merchantable quality and suitable for its particular purposes.

The Buyer is responsible for ensuring that the warranty on the motorcycle is not affected by the fitting of the products.

On return of any defective Products Drury Precision Engineering Limited shall at its option either supply a replacement or refund the purchase money but shall not be liable if the Products have been modified or used or maintained otherwise than in accordance with Drury Precision Engineering Limited instructions and good engineering practice or if the defect arises from accident or neglect.

Other than identified above and subject to Drury Precision Engineering Limited not limiting its liability for causing death and personal injury, it shall not be liable for indirect or consequential loss and otherwise its liability shall be limited to the amounts paid by the Buyer for the Products.

These terms do not affect the Buyer's statutory rights.  
If you require any further information, then please contact us:

Phone: UK Callers: 0800 634 2801  
International Callers: +44 1507 466729  
Fax: +44 (0) 1507 462 790  
Email: [sales@evotech-performance.com](mailto:sales@evotech-performance.com)

Please note that the above is for your information only and does not constitute the Terms and Conditions of your purchase. These can be found on our website [www.evotech-performance.com](http://www.evotech-performance.com). If you do not have internet access, you can obtain our Terms and Conditions by writing to us at the above address.

### Returns, Refunds and Replacements

We hope you are happy with your purchase from Evotech Performance. However, if you wish to return or replace a product, then please carefully read the information and follow the instructions below before sending back your item.

If, within 30 days, you wish to return a product that is not faulty, we will be happy to accept it back, providing that it is undamaged and in a re-sellable condition. You will have to pay the return postage and we will discount your refund by a 10% re-packaging and re-stocking fee. We will not refund the original postage.

If the product is faulty, or the wrong part, or any other reason that is our fault we will also refund the return postage costs.

In either event, please ask for advice when you wish to return anything by calling 0800 634 2801 or by emailing [sales@evotech-performance.com](mailto:sales@evotech-performance.com), we will advise the best method of returning it.

If a product should develop a fault after 30 days, please contact us to discuss.

Please let us know why you wish to return the product.

If you are returning faulty goods, you are entitled to a refund or a replacement part. Please indicate which you prefer.

Please ensure that the goods are packed securely, and include all of the original parts, using the original packaging where possible. If necessary place in suitable extra packaging to protect the goods whilst in transit to us.

Please make sure that you obtain and retain Proof of Posting Certificate from the Post Office when you return your goods. This is to protect you in the event that your goods are lost in transit; they remain your responsibility until they reach us.

#### **Returns Address:**

**Evotech Performance, Beechings Way, Alford, Lincolnshire, LN13 9JE, United Kingdom.**



**EVOTECH**  
P E R F O R M A N C E

## **Kawasaki Z1000SX Installation Instructions**

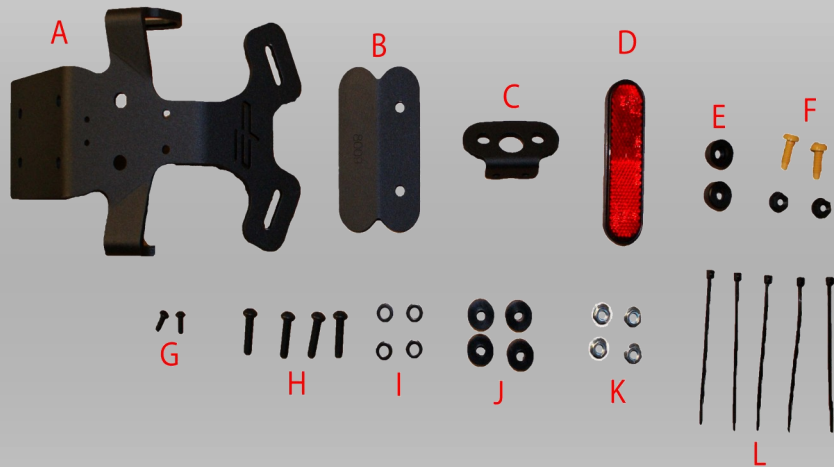
**Fits Years 2011-Onwards**

**Product Reference - 7851**

**[www.evotech-performance.com](http://www.evotech-performance.com)**

### Kit contents

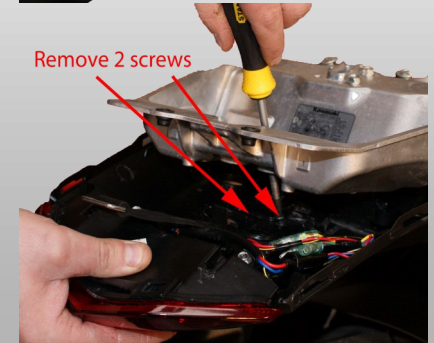
- |                                  |                             |
|----------------------------------|-----------------------------|
| A-1 x Main Bracket               | H-4 x M6x35Black B/H Screws |
| B-1 x Rear light Bracket         | I-4 x M6 Black Washers      |
| C-1 x Reflector Bracket          | J-4 x Main Bracket Spacers  |
| D-1 X Reflector                  | K-4 x M6 Flange Nuts        |
| E-2 x Number plate Light Spacers | L-5 x Small Cable Ties      |
| F-2 x Plastic Screws and Nuts    |                             |
| G-2 x M4x12 Black B/H Screws     |                             |



### Fitting Instructions

1. Remove rear set. Key lock is located under the rear of the bike on the left hand side.
2. Remove tool kit
3. Remove front seat 2 screws.
4. Remove Rear cowl 4 screws.
5. Remove grab rails 4 screws

6. Remove 2 cross head screws from fender.
7. Remove 4 main fender mounting screws. Located where the tool kit was positioned.
8. Remove 2 cross head screws located on the top of the Plastic fender. You need to bend the plastic down to allow access to the screw heads see Diagram



9. Disconnect indicators and rear light from bike loom. Electrical clips are located on the right hand side of bike. Remove indicators and rear light from fender. Please pay attention when removing the indicators.
10. Fit indicators to new tail tidy. Using 2 x M4 screws and spacers fit number plate light to new tail tidy
11. Secure wiring to tail tidy using cable ties.
12. Reconnect indicators and number plate light to bike loom.
13. Assemble tail tidy to bike using 4 M6 x 35 and 4 spacer. Position spacer between tail tidy and bike. Please pay attention to the positioning of the wires to avoid trapping.
14. Refit rear cowl, front seat, rear seat and grab rears in this order.
16. Check electrics.

Please visit: [www.evotech-performance.com](http://www.evotech-performance.com)  
to view our full product range