



SP0072

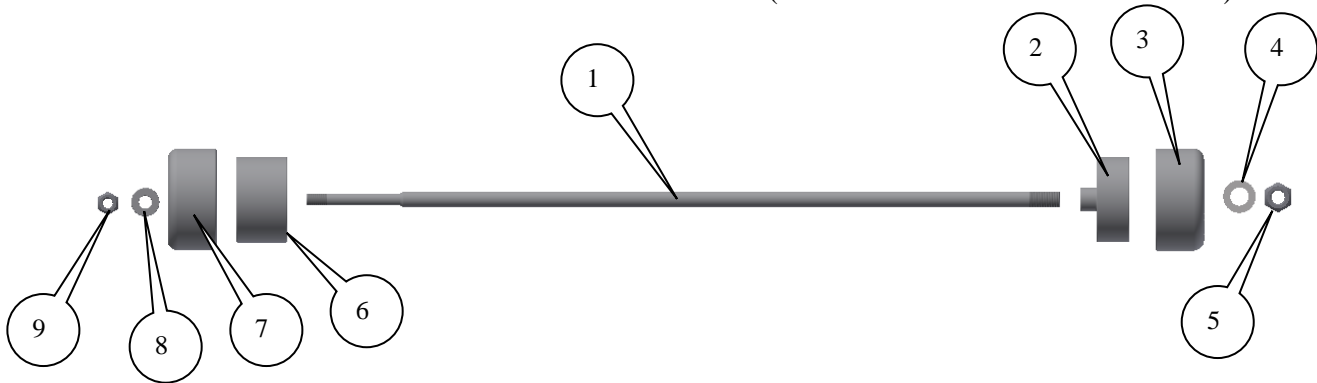
FITTING INSTRUCTIONS FOR SP0072 SWINGARM-PROTECTORS
YAMAHA TRACER 700 2016-



THIS KIT CONTAINS THE ITEMS PICTURED AND LABELLED BELOW.
DO NOT PROCEED UNTIL YOU ARE SURE ALL PARTS ARE PRESENT.

Please note that the way the kit is packed does not necessarily represent the way of mounting to the bike.

THE PARTS SHOWN MAY BE REPRESENTATIVE ONLY (FOR CLARITY OF INSTRUCTIONS ONLY)



LEGEND

- ITEM 1 = SPINDLE BAR (SB124=370mm LONG) (x1)
- ITEM 2 = RIGHT-HAND SPACER (S0988, 8mm INTERNAL DIAMETER) (x1).
- ITEM 3 = R-H-S CRASH PROTECTOR (B0442 M8 (8mm INTERNAL DIAMETER)) (x1).
- ITEM 4 = M8 WASHER (19mm OUTSIDE DIAMETER) (x1).
- ITEM 5 = M8 NYLOC NUT (x1).
- ITEM 6 = LEFT-HAND SPACER (S0987, 6mm INTERNAL DIAMETER) (x1).
- ITEM 7 = L-H-S CRASH PROTECTOR (B0442 M6 (6mm INTERNAL DIAMETER)) (x1).
- ITEM 8 = M6 WASHER (19mm OUTSIDE DIAMETER) (x1).
- ITEM 9 = M6 NYLOC NUT (x1).



SP0072

Please note that in cases where kits are packed with rubber washers holding the components onto the bolt – *the rubber washers should be thrown away!*

TOOLS REQUIRED

- 10mm A/F SOCKET AND WRENCH.
- 13mm A/F SOCKET AND WRENCH.

FITTING INSTRUCTIONS

- Place the spindle bar (item 1) through the rear wheel spindle from the right hand side (feed the end with the smaller thread through first).
- Place spacer with the smaller hole (item 6) over the exposed end of the spindle bar on the left hand side (the counter bore will fit over the spindle nut and spacer).
- Place the crash protector with the smaller hole (item 7) over the exposed spindle bar on the left hand side so that it sits against the spacer just fitted.
- Place the washer with the smaller hole (item 8) over the exposed spindle bar on the left hand side so that it sits into the counter bore in the crash protector just fitted.
- Place the smaller nut (item 9) over the exposed spindle bar on the left hand side (please ensure the nyloc nut is fully engaged).
- On the right hand side place the remaining spacer (item 2) with the larger hole over the exposed spindle bar so that the smaller spigot locates into the spindle.
- Place the remaining crash protector with the larger hole (item 3) over the exposed spindle bar so that it sits against the spacer just fitted.
- Place the remaining washer with the larger hole (item 4) over the exposed spindle bar so that it sits into the counter bore in the crash protector just fitted.
- Place the larger remaining nut (item 5) over the exposed spindle bar (please ensure the nyloc nut is fully engaged).
- Tighten both nuts (ensuring both nuts are fully engaged and equal amounts protrude from either side) **DO NOT OVER-TIGHTEN—THE NYLOC NUTS WILL HOLD IT TIGHT.**

ISSUE 1 04/08/2016 (NSY)

CONSUMER NOTICE

The catalogue description and any exhibition of samples are only broad indications of the Products and R&G may make design changes which do not diminish their performance or visual appeal and supplying them in such state shall conform to the order. The Buyer acknowledges no representation or warranty (other than as to title) has been given or will apply to the Products other than those in R&G's order or confirmation and the Buyer confirms it has chosen the Products as being of merchantable quality and suitable for its particular purposes. Where R&G fits the Products or undertakes other services it shall exercise reasonable skill and care and rectify any fault free of charge unless the workmanship has been disturbed. The Buyer is responsible for ensuring that the warranty on the motorcycle is not affected by the fitting of the Products. On return of any defective Products R&G shall at its option either supply a replacement or refund the purchase money but shall not be liable if the Products have been modified or used or maintained otherwise than in accordance with R&G's or manufacturer's instructions and good engineering practice or if the defect arises from accident or neglect. Other than identified above and subject to R&G not limiting its liability for causing death and personal injury, it shall not be liable for indirect or consequential loss and otherwise its liability shall be limited to the amounts paid by the Buyer for the Products or the fitting or service concerned. These terms do not affect the Buyer's statutory rights.

R&G RACING RETURNS POLICY (NON-FAULTY GOODS)

Returns must be pre-authorized (if not pre-authorized the return will be rejected). Goods may only be returned direct to us if they were purchased direct from us (customer must prove if necessary). Otherwise to be returned to original vendor. Goods must be in re-sellable condition, in the opinion of R&G Racing. All returns are subject to a 25% restocking and handling fee (25% of the gross value exc. P&P – at the prevailing price at time of purchase). The customer must pay any and all carriage charges. No returns of discontinued products, unless within 14 days of purchase. This policy does not affect your statutory rights and does not refer to faulty goods.

R&G Racing

Unit 1, Shelley's Lane, East Worldham, Alton, Hampshire, GU34 3AQ

Tel: +44 (0)1420 89007 Fax: +44 (0)1420 87301 www.rg-racing.com Email: info@rg-racing.com



SP0072

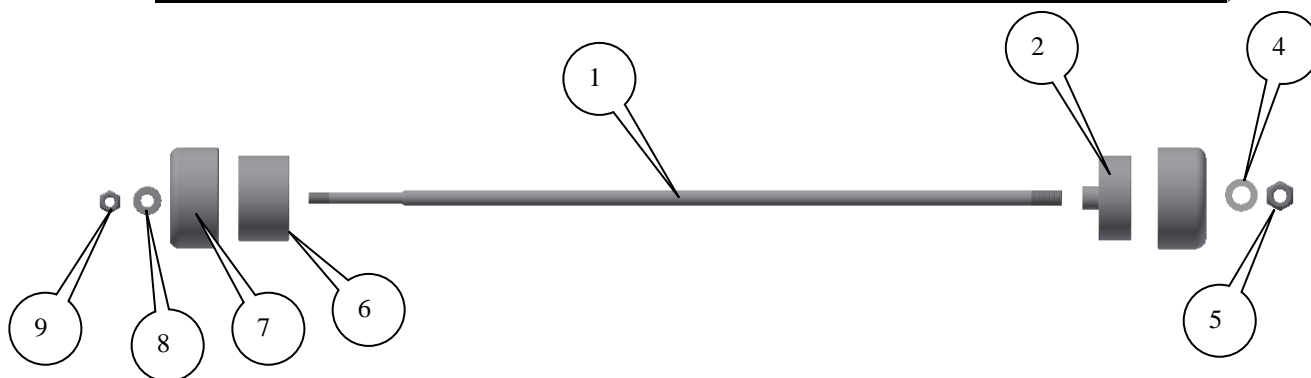
NOTICE DE MONTAGE POUR SP0072 PROTECTION BRAS OSCILLANT
YAMAHA TRACER 700 2016-



Le kit contient les articles exposés ci-dessous, vérifier que toutes les pièces soient présentes avant de procéder au montage.

LA FAÇON DONT LE KIT EST EMBALLE NE CORRESPOND PAS FORCEMENT A LA FAÇON DE MONTER LES PIÈCES SUR LA MOTO.

LES PARTIES PRESENTÉES PEUVENT ÊTRE UNIQUEMENT REPRESENTATIVES (POUR LA CLARTE DES INSTRUCTIONS UNIQUEMENT)



LEGENDE

- ARTICLE 1 = BARRE D'AXE (SB124=370mm DE LONG) (x1)
- ARTICLE 2 = ENTRETOISE COTE DROIT (S0988, 8mm DIAMETRE INTERNE) (x1).
- ARTICLE 3 = PROTECTION CRASH COTE DROIT (B0442 M8 (8mm DIAMETRE INTERNE)) (x1).
- ARTICLE 4 = M8 RONDELLE (19mm DIAMETRE INTERNE) (x1).
- ARTICLE 5 = M8 ECROU (x1).
- ARTICLE 6 = ENTRETOISE COTE GAUCHE (S0987, 6mm DIAMETRE INTERNE) (x1).
- ARTICLE 7 = L (B0442 M6 (6mm DIAMETRE INTERNE)) (x1).
- ARTICLE 8 = M6 RONDELLE (19mm DIAMETRE EXTERNE) (x1).
- ARTICLE 9 = M6 ECROU (x1).



SP0072

Notez que si les kits sont emballés avec des rondelles en caoutchouc servant à tenir les composants, *ces rondelles doivent être jetées!*

OUTILS REQUIS

- 10mm CLE A DOUILLE
- 13mm CLE A DOUILLE.

INSTRUCTIONS DE MONTAGE

- Placer la barre d'axe (article 1) dans le moyeu de roue arrière du coté droit (Insérer l'extrémité avec le plus petit filetage en premier).
- Placer l'entretoise avec le plus petit trou (article 6) sur l'extrémité de la barre d'axe du coté gauche (l'alésage se place sur l'écrou d'axe et l'entretoise).
- Placer la protection crash avec le plus petit trou (article 7) sur l'extrémité de la barre d'axe du coté gauche de façon à ce qu'elle se place contre l'entretoise tout juste insérée.
- Placer la rondelle avec le plus petit trou (article 8) sur l'extrémité de la barre d'axe du coté gauche de façon à ce qu'elle se place dans l'alésage de la protection crash.
- Placer le plus petit écrou (article 9) sur l'extrémité de la barre d'axe du coté gauche (veiller à ce que l'écrou soit complètement engagé).
- Placer l'entretoise restante du coté droit (article 2) avec le trou plus large sur l'extrémité de la barre d'axe de façon à ce que le petit ressort se place dans l'axe.
- Placer la protection crash restante avec le trou plus large (article 3) sur l'extrémité de la barre d'axe de façon à ce qu'elle se place contre l'entretoise tout juste insérée.
- Placer la rondelle restante avec le trou plus large (article 4) sur l'extrémité de la barre d'axe de façon à ce qu'elle se place dans l'alésage de la protection crash tout juste insérée.
- Placer l'écrou large restant (article 5) sur l'extrémité de la barre d'axe (veiller à ce que l'écrou soit complètement serré).
- Serrer les 2 écrous (veiller à ce que les 2 écrous soient complètement engagés et que les longueurs dépassantes de chaque coté soient identiques) **NE PAS TROP SERRER—LES ECRUS FIXENT L'ENSEMBLE.**

ISSUE 1 04/08/2016 (NSY)

CONSUMER NOTICE

The catalogue description and any exhibition of samples are only broad indications of the Products and R&G may make design changes which do not diminish their performance or visual appeal and supplying them in such state shall conform to the order. The Buyer acknowledges no representation or warranty (other than as to title) has been given or will apply to the Products other than those in R&G's order or confirmation and the Buyer confirms it has chosen the Products as being of merchantable quality and suitable for its particular purposes. Where R&G fits the Products or undertakes other services it shall exercise reasonable skill and care and rectify any fault free of charge unless the workmanship has been disturbed. The Buyer is responsible for ensuring that the warranty on the motorcycle is not affected by the fitting of the Products. On return of any defective Products R&G shall at its option either supply a replacement or refund the purchase money but shall not be liable if the Products have been modified or used or maintained otherwise than in accordance with R&G's or manufacturer's instructions and good engineering practice or if the defect arises from accident or neglect. Other than identified above and subject to R&G not limiting its liability for causing death and personal injury, it shall not be liable for indirect or consequential loss and otherwise its liability shall be limited to the amounts paid by the Buyer for the Products or the fitting or service concerned. These terms do not affect the Buyer's statutory rights.

R&G RACING RETURNS POLICY (NON-FAULTY GOODS)

Returns must be pre-authorized (if not pre-authorized the return will be rejected). Goods may only be returned direct to us if they were purchased direct from us (customer must prove if necessary). Otherwise to be returned to original vendor. Goods must be in re-sellable condition, in the opinion of R&G Racing. All returns are subject to a 25% restocking and handling fee (25% of the gross value exc. P&P – at the prevailing price at time of purchase). The customer must pay any and all carriage charges. No returns of discontinued products, unless within 14 days of purchase. This policy does not affect your statutory rights and does not refer to faulty goods.

R&G Racing

Unit 1, Shelley's Lane, East Worldham, Alton, Hampshire, GU34 3AQ

Tel: +44 (0)1420 89007 Fax: +44 (0)1420 87301 www.rg-racing.com Email: info@rg-racing.com