

### Kit Contents

Description	Part No	Pcs
Screw M4x8	01050-04	2
O-ring 4.5x1.5	00338-59	2
Top Cap M50x1	60005-01	2
O-ring 46x2.5	00576-03	2
Spring 7.5 N/mm	68036-75	1
Spring 8.5 N/mm	68036-85	1
Sticker Öhlins	00192-01	2
Sticker Öhlins	01185-04	2
Sticker Öhlins	01185-01	2

#### 👁️Note!

Before installing this product, check the contents of the kit. If anything is missing, please contact an Öhlins dealer.

#### ⚠️Warning!

Öhlins cannot be held responsible for any personal injury or damage that may occur after installing the Öhlins spring kit. We strongly recommend to let an Öhlins authorized service center install this kit.

#### ⚠️Warning!

After you have installed this product, taken a test ride at low speed to make sure that your vehicle has maintained stability.

#### 👁️Note!

Please note that this image is a general representation of the product and may differ slightly from your product.

#### 👁️Note!

Please note that during storage and transportation, especially at high ambient temperature, some of the oil and grease used for assembling may leak and stain the packaging. This is in no way detrimental to the product, wipe off the excessive oil/grease with a cloth.

## Fork Spring Kit for Honda CRF300L

# FSK 159

## Mounting Instructions



# MOUNTING INSTRUCTIONS

## Congratulations!

With this purchase you have made a clear statement. This high performance Front Fork kit from Öhlins is nothing but pure racing breed which means that you have taken one more step to eliminate luck on your motorcycle.

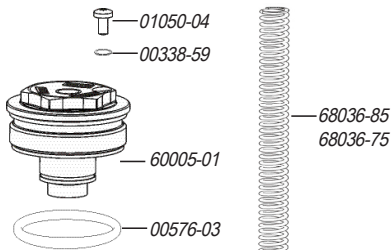
The balance between your Front Fork and rear suspension will sharpen up and the performance of your Front Fork will improve. Almost 40 years of racing experience is now a crucial part of your riding experience.

## Relief screw

After using your motorcycle for a certain amount of time, please remove the screw situated on the top cap in order to release the air accumulated inside the Front Fork. Screw No.01050-04 Tightening torque is 3 Nm.

## Recommended oil

Model	Öhlins oil
CRF300 L.....	01314-01



## How to install

- 1.Put the motorcycle on the work stand so that the front wheel barely touch the ground. Make sure the motorcycle is in a stable position.
- 2.Looseen the screws of the triple clamp top mounting.
- 3.Looseen (do not remove) both fork top caps 1/2 turn.
- 4.Remove both fork legs as per vehicle service manual instructions.
- 5.Remove the original Top cap and spring.
- 6.Remove the circlip, washer and top out rubber from the original top cap.
- 7.Purge all the oil from both Fork Legs.
- 8.Install the Öhlins spring (in the RH leg only), then fill the Öhlins oil in both Fork Legs.
- 9.Re-install the top out rubber, washer and circlip onto the Öhlins top cap.
- 10.Install the Öhlins top cap. Torque the top cap to the damper rod as vehicle service manual instruction.
- 11.Re-install both fork legs as per vehicle service manual instructions.

## Recommended oil volume

Model	Damping Leg	Spring Leg
CRF300 L.....	595 ml	585 ml

### ⓘ Note!

Honda CRF300L has the Damping system in one Fork leg and the spring in the other Fork Leg.

## Recommended spring

Spring part No.	Spring rate	For rider weight
68036-75	7.5 N/mm	Below 80 kg
68036-85	8.5 N/mm	Above 80 kg

ⓘ Öhlins products are subject to continuous improvement and development, therefore, although these instructions include the most up-to-date information available at the time of printing, minor updates may occur.

To find the latest information contact an Öhlins distributor. Please contact Öhlins if you have any questions regarding the contents in this document.

Part no. MI\_FSK 159\_EN\_0  
Issued 2021-03-10

© Öhlins Asia Co. Ltd. All rights reserved. Any reprinting or unauthorized use without the written permission of Öhlins Racing AB is prohibited.

Öhlins Asia Co. Ltd  
700/937 Moo5, Tambol Nongkhaka,  
Amphur Phantong, Chonburi Province  
20160 Thailand



[www.ohlins.com](http://www.ohlins.com)

# MOUNTING INSTRUCTIONS

## Congratulations!

With this purchase you have made a clear statement. This high performance Front Fork kit from Öhlins is nothing but pure racing breed which means that you have taken one more step to eliminate luck on your motorcycle.

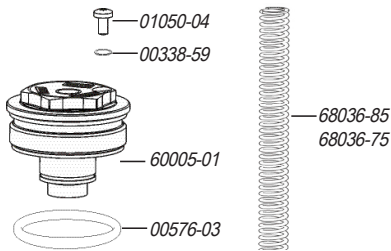
The balance between your Front Fork and rear suspension will sharpen up and the performance of your Front Fork will improve. Almost 40 years of racing experience is now a crucial part of your riding experience.

## Relief screw

After using your motorcycle for a certain amount of time, please remove the screw situated on the top cap in order to release the air accumulated inside the Front Fork. Screw No.01050-04 Tightening torque is 3 Nm.

## Recommended oil

<b>Model</b>	<b>Öhlins oil</b>
CRF300 L.....	01314-01



## How to install

- 1.Put the motorcycle on the work stand so that the front wheel barely touch the ground. Make sure the motorcycle is in a stable position.
- 2.Looseen the screws of the triple clamp top mounting.
- 3.Looseen (do not remove) both fork top caps 1/2 turn.
- 4.Remove both fork legs as per vehicle service manual instructions.
- 5.Remove the original Top cap and spring.
- 6.Remove the circlip, washer and top out rubber from the original top cap.
- 7.Purge all the oil from both Fork Legs.
- 8.Install the Öhlins spring (in the RH leg only), then fill the Öhlins oil in both Fork Legs.
- 9.Re-install the top out rubber, washer and circlip onto the Öhlins top cap.
- 10.Install the Öhlins top cap. Torque the top cap to the damper rod as vehicle service manual instruction.
- 11.Re-install both fork legs as per vehicle service manual instructions.

## Recommended oil volume

<b>Model</b>	<b>Damping Leg</b>	<b>Spring Leg</b>
CRF300 L.....	595 ml	585 ml

### ⓘ Note!

Honda CRF300L has the Damping system in one Fork leg and the spring in the other Fork Leg.

## Recommended spring

<b>Spring part No.</b>	<b>Spring rate</b>	<b>For rider weight</b>
68036-75	7.5 N/mm	Below 80 kg
68036-85	8.5 N/mm	Above 80 kg

ⓘ Öhlins products are subject to continuous improvement and development, therefore, although these instructions include the most up-to-date information available at the time of printing, minor updates may occur.

To find the latest information contact an Öhlins distributor. Please contact Öhlins if you have any questions regarding the contents in this document.

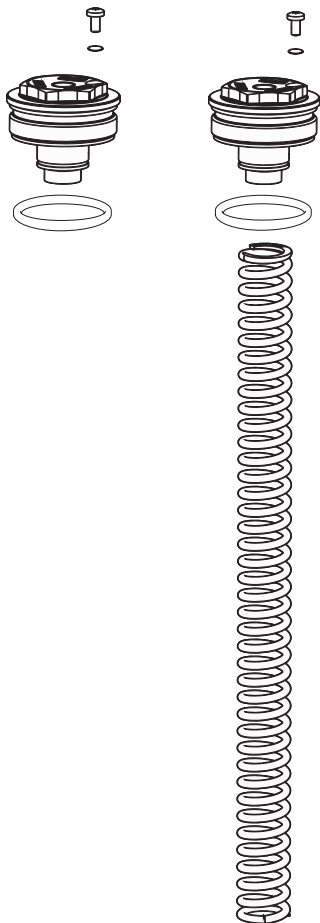
Part no. MI\_FSK 159\_EN\_0  
Issued 2021-03-10

© Öhlins Asia Co. Ltd. All rights reserved. Any reprinting or unauthorized use without the written permission of Öhlins Racing AB is prohibited.

Öhlins Asia Co. Ltd  
700/937 Moo5, Tambol Nongkhaka,  
Amphur Phantong, Chonburi Province  
20160 Thailand



[www.ohlins.com](http://www.ohlins.com)



### Kit Contents

Description	Part No	Pcs
Screw M4x8	01050-04	2
O-ring 4.5x1.5	00338-59	2
Top Cap M50x1	60005-01	2
O-ring 46x2.5	00576-03	2
Spring 7.5 N/mm	68036-75	1
Spring 8.5 N/mm	68036-85	1
Sticker Öhlins	00192-01	2
Sticker Öhlins	01185-04	2
Sticker Öhlins	01185-01	2

#### 👁️Note!

Before installing this product, check the contents of the kit. If anything is missing, please contact an Öhlins dealer.

#### ⚠️Warning!

Öhlins cannot be held responsible for any personal injury or damage that may occur after installing the Öhlins spring kit. We strongly recommend to let an Öhlins authorized service center install this kit.

#### ⚠️Warning!

After you have installed this product, taken a test ride at low speed to make sure that your vehicle has maintained stability.

#### 👁️Note!

Please note that this image is a general representation of the product and may differ slightly from your product.

#### 👁️Note!

Please note that during storage and transportation, especially at high ambient temperature, some of the oil and grease used for assembling may leak and stain the packaging. This is in no way detrimental to the product, wipe off the excessive oil/grease with a cloth.

## Fork Spring Kit for Honda CRF300L

# FSK 159

## Mounting Instructions

