

Kit Contents

Description	Part No	Pcs
Screw	01050-04	2
O-ring	00338-59	2
Top Cap	60005-36	2
O-ring	00638-11	2
Spring 7.0 N/mm	68022-70	1
Spring 8.0 N/mm	68022-80	1
Sticker Öhlins	00192-01	2
Sticker Öhlins	01185-01	2
Sticker Öhlins	01185-04	2

👁️Note!

Before installing this product, check the contents of the kit. If anything is missing, please contact an Öhlins dealer.

⚠️Warning!

Öhlins cannot be held responsible for any personal injury or damage that may occur after installing the Öhlins spring kit. We strongly recommend to let an Öhlins authorized service center install this kit.

⚠️Warning!

After you have installed this product, taken a test ride at low speed to make sure that your vehicle has maintained stability.

👁️Note!

Please note that this image is a general representation of the product and may differ slightly from your product.

👁️Note!

Please note that during storage and transportation, especially at high ambient temperature, some of the oil and grease used for assembling may leak and stain the packaging. This is in no way detrimental to the product, wipe off the excessive oil/grease with a cloth.

Fork Spring Kit for Kawasaki KLX150BF

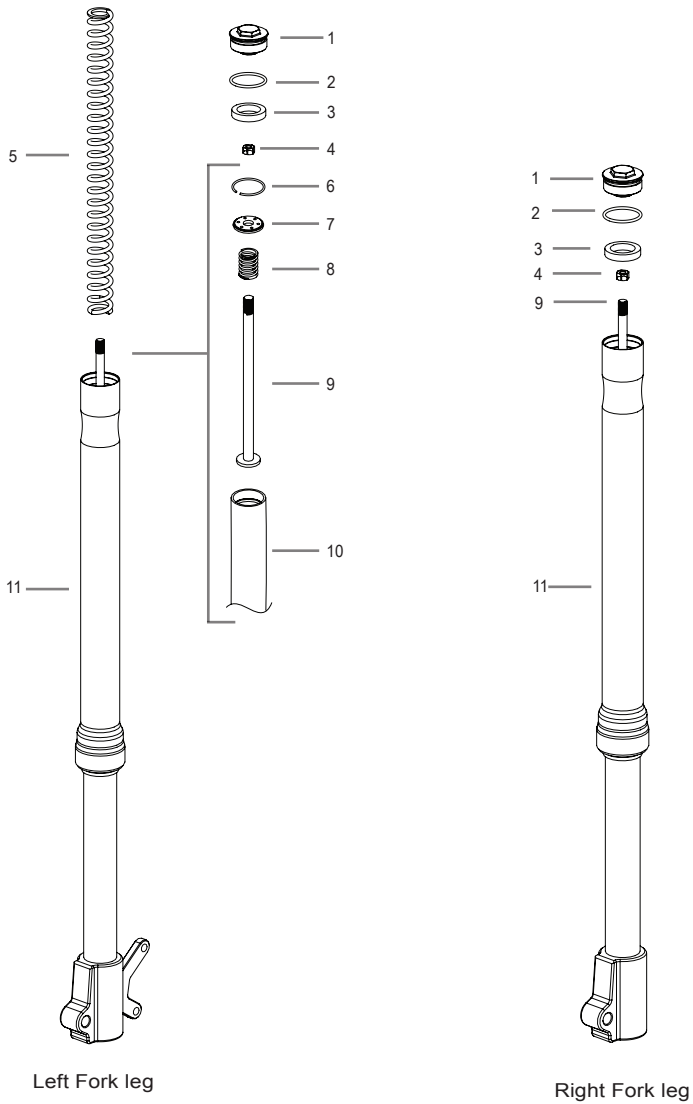
FSK 139

Mounting Instructions



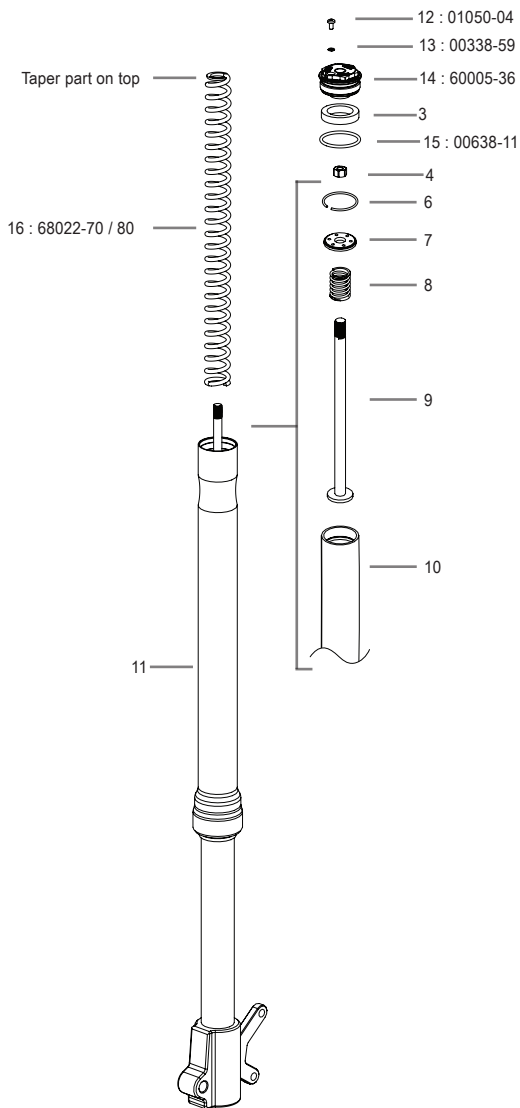
MOUNTING INSTRUCTIONS

Original Front Fork assembly

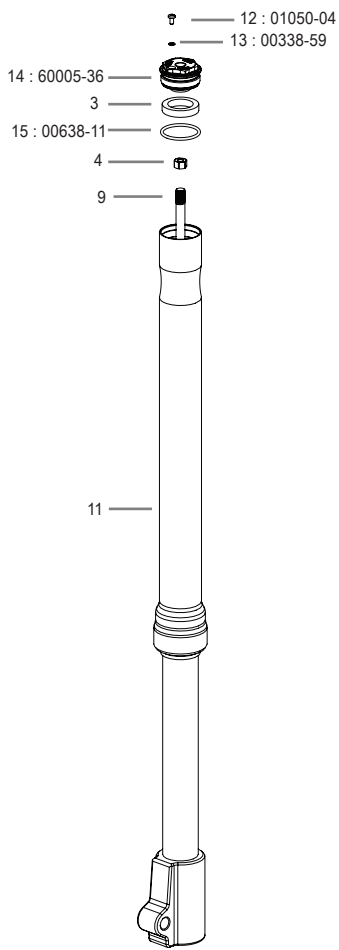


MOUNTING INSTRUCTIONS

Öhlins Front Fork kit assembly



Left Fork leg



Right Fork leg

MOUNTING INSTRUCTIONS

Congratulations!

With this purchase you have made a clear statement. This high performance Front Fork kit from Öhlins is nothing but pure racing breed which means that you have taken one more step to eliminate luck on your motorcycle.

The balance between your Front Fork and rear suspension will sharpen up and the performance of your Front Fork will improve. Almost 40 years of racing experience is now a crucial part of your riding experience.

Recommended oil

We recommended to use Öhlins high performance Front Fork fluid 01314-01.

Recommended oil Level

400 ml. in RH Leg.

350 ml. in LH Leg.

👁️ Note!

Öhlins FSK 139 spring 68022-70 rate is 7.0N/mm.

Öhlins FSK 139 spring 68022-80 rate is 8.0N/mm.

	Recommended spring	
Feeling	Soft	Hard
LH Leg	68022-70	68022-80

👁️ Note!

The measurement of oil level is taken from the top of the inner tube (6) to the oil surface.

> The fork leg need to be in vertical position

> The fork need to be fully compressed

> The fork must be without the spring and the preload tube

MOUNTING INSTRUCTIONS

How to install

1. Put the motorcycle on a work stand so that the front wheel barely touches the ground. Make sure the motorcycle is in a stable position.

2. Release the top tripleclamp screws.

2.1 Loosen but don't remove the front fork top caps.

2.2 Uninstall both fork legs from the motorcycle.

Note!

Work with 1 fork leg at the time

Left Fork Leg

3. Remove the original top cap (1), stop rubber (3) and nut(4)

4. Purge all the oil from the fork Leg.

5. Remove the circlip (6), Washer(7), Top out spring(8), Shaft(9) and Spring(5).

6. Install Ohlins spring (16), Shaft(9), Top out spring(8), washer(7), circlip(6) and nut(4).

Note

The spring marking (taper section) must be place upwards.

7. Fill the fork leg with oil according to the recommended type and quantity.

8. Place the standard stop rubber(3) onto the Öhlins top cap (14) and tighten it to the shaft(9) and outer tube(10).

MOUNTING INSTRUCTIONS

Right Fork Leg

9. Remove the original top cap (1), stop rubber (3) and nut(4).

10. Purge all the oil from the fork Leg.

11. Fill the fork leg with oil according to the recommended type and quantity.

12. Place the standard stop rubber(3) onto the Öhlins top cap (14) and tighten it to the shaft(9) and outer tube(10).

13. Re-install both fork leg as per vehicle services manual instructions.

Relief screw

After using your motorcycle for a certain amount of time, remove the screw situated on the top cap in order to release the air accumulated inside the Front Fork. Screw No.01050-04 Tightening torque is 3 Nm.

This page intentionally left blank

👁️ Öhlins products are subject to continuous improvement and development, therefore, although these instructions include the most up-to-date information available at the time of printing, minor updates may occur.

To find the latest information contact an Öhlins distributor. Please contact Öhlins if you have any questions regarding the contents in this document.

Part no. MI_FSK139_EN_0
Issued 2018-09-05

© Öhlins Asia Co. Ltd. All rights reserved. Any reprinting or unauthorized use without the written permission of Öhlins Racing AB is prohibited.

Öhlins Asia Co. Ltd
700/937 Moo5, Tambol Nongkhaga,
Amphur Phantong, Chonburi Province
20160 Thailand



www.ohlins.com