



FITTING INSTRUCTIONS FOR LP0371 LICENCE PLATE BRACKET



THIS KIT CONTAINS THE ITEMS PICTURED AND LABELLED OVER PAGE.

SOME PARTS MAY BE SHOWN FOR CLARITY OF INSTRUCTIONS ONLY.

DO NOT PROCEED UNTIL YOU ARE SURE ALL PARTS ARE PRESENT.

PLEASE READ ALL INSTRUCTIONS BEFORE PROCEEDING.

IF IN ANY DOUBT WHEN FITTING OUR PRODUCTS, CONSULT ONE OF OUR DEALERS OR HAVE FITTED BY A QUALIFIED TECHNICIAN.

PLEASE NOTE THAT THE WAY THE KIT IS PACKED DOES NOT NECESSARILY REPRESENT THE WAY OF MOUNTING TO THE BIKE.

IN THE EVENT OF RUBBER WASHERS BEING USED TO HOLD COMPONENTS ONTO BOLTS, THESE RUBBER WASHERS CAN BE THROWN AWAY.

DIGITAL COPIES OF THESE INSTRUCTIONS ARE AVAILABLE FROM:

WWW.RG-RACING.COM

R&G

Unit 1, Shelley's Lane, East Worldham, Alton, Hampshire, GU34 3AQ
Tel: +44 (0)1420 89007 Fax: +44 (0)1420 87301 www.rg-racing.com Email: info@rg-racing.com

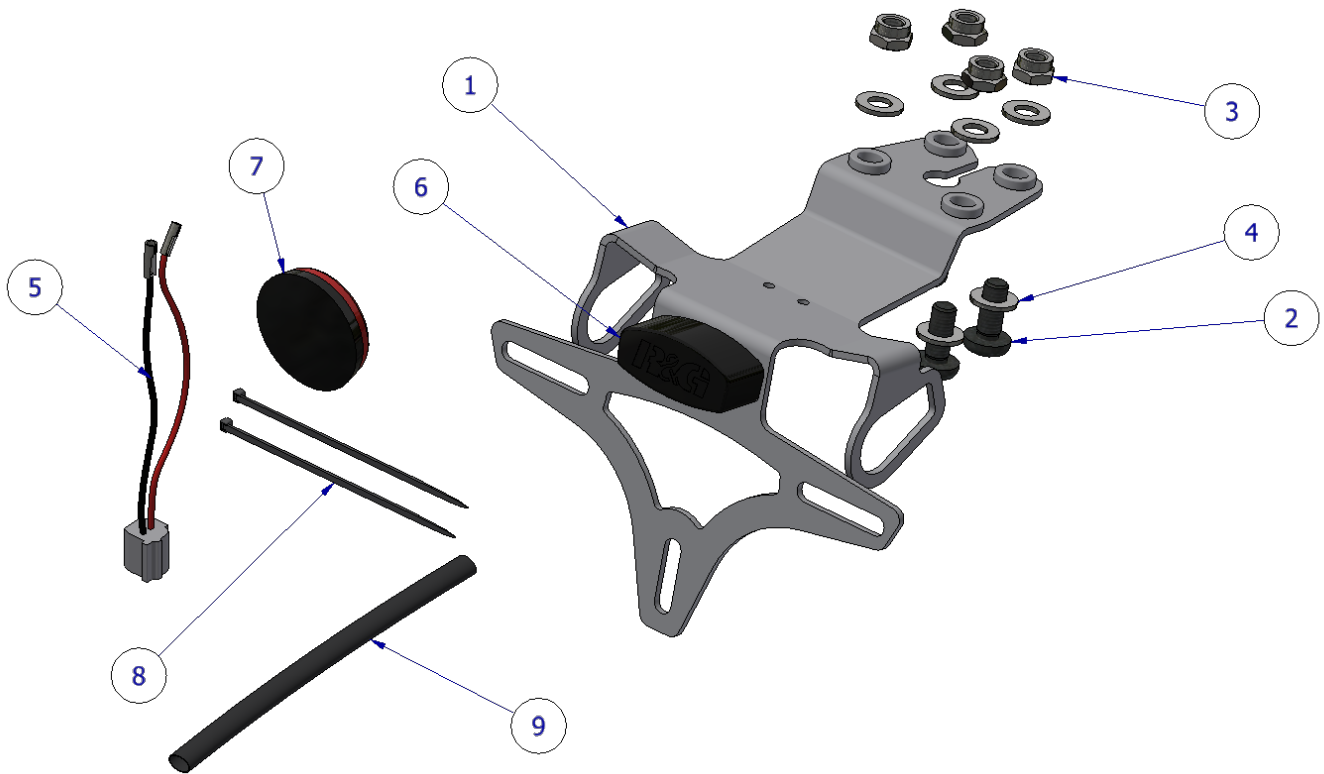


<u>TOOLS REQUIRED</u>	<u>GENERAL TORQUE SETTINGS</u>
<ul style="list-style-type: none"> •set of metric Allen keys to include 5mm A/F size. •10mm spanner or socket and wrench. <ul style="list-style-type: none"> •Phillips screwdriver. •Cable cutters. •Small amount of adhesive. 	M4 BOLT = 8Nm M5 BOLT = 12Nm M6 BOLT = 15Nm M8 BOLT = 20Nm M10 BOLT = 40Nm M12 BOLT = 40Nm

ITEM NO.	DESCRIPTION	QTY
ITEM 1	LICENCE PLATE BRACKET (TB0296)	1
ITEM 2	M8 x 20mm LONG BUTTON HEAD BOLTS	4
ITEM 3	NYLOC NUTS	4
ITEM 4	WASHERS	8
ITEM 5	LICENCE PLATE ILLUMINATOR CONNECTOR (CON0051)	1
ITEM 6	LA0002 LICENCE PLATE ILLUMINATOR ASSEMBLY	1
ITEM 7	REFLECTOR (REFL 3)	1
ITEM 8	2.5mm CABLE TIES	2
ITEM 9	180mm LENGTH OF HEATSHRINK	1



ASSEMBLY DIAGRAM



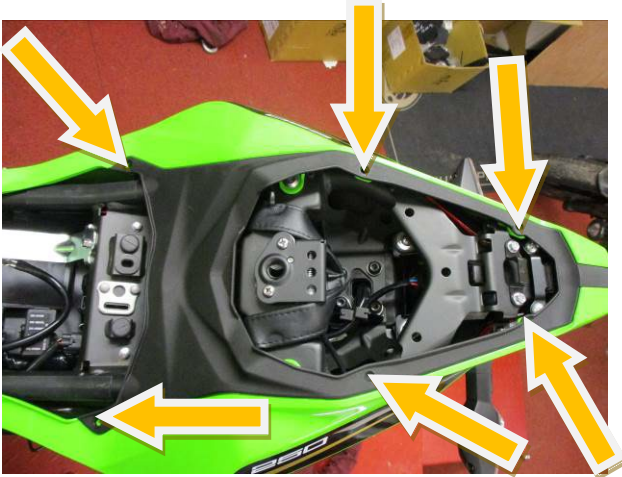
FITTING PICTURES



PICTURE 1



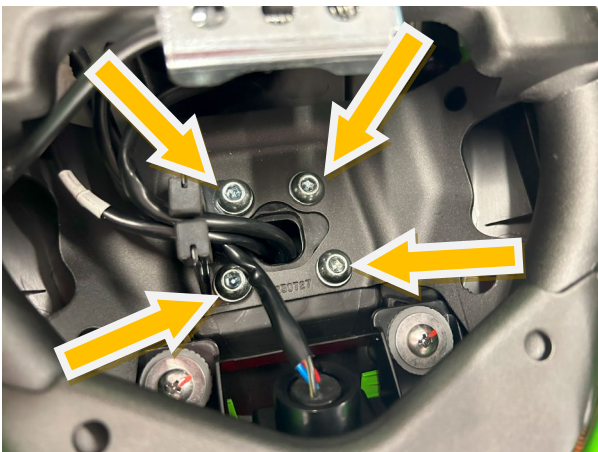
PICTURE 2



PICTURE 3



PICTURE 4



PICTURE 5



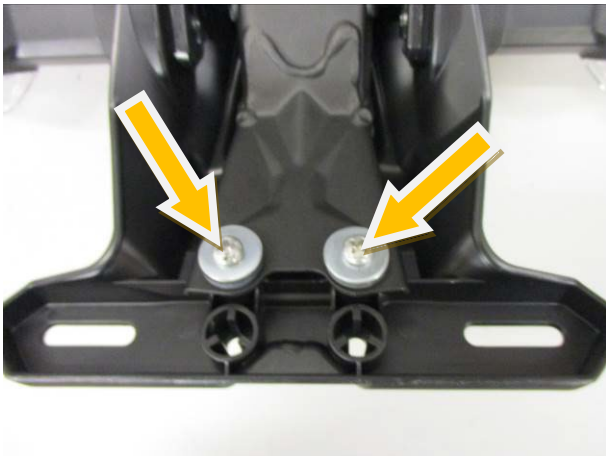
PICTURE 6



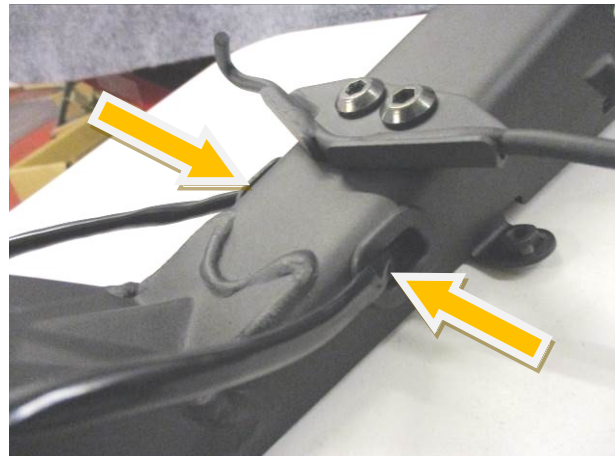
PICTURE 7



PICTURE 8



PICTURE 9



PICTURE 10



PICTURE 11



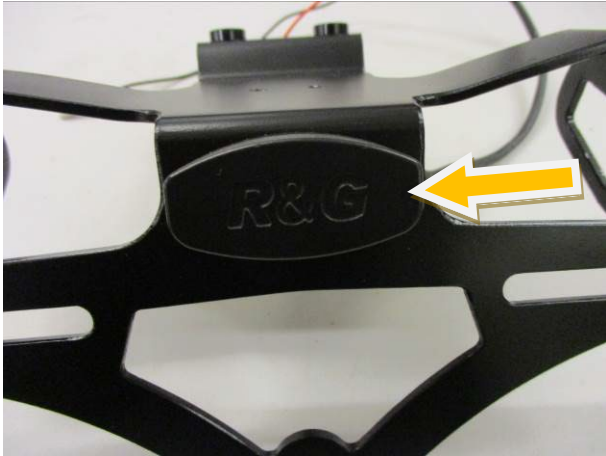
PICTURE 12



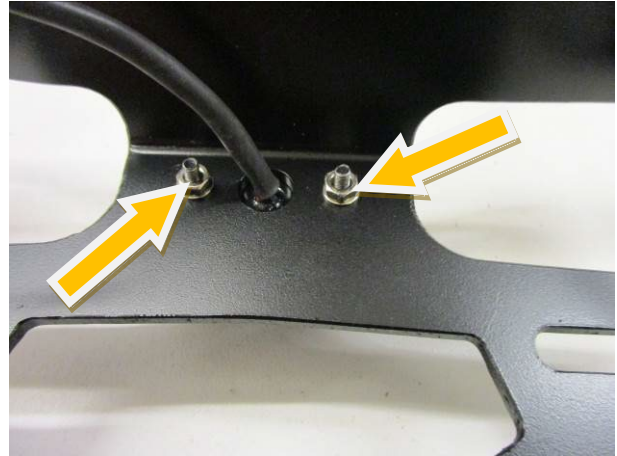
PICTURE 13



PICTURE 14



PICTURE 15



PICTURE 16



PICTURE 17



PICTURE 18



PICTURE 19



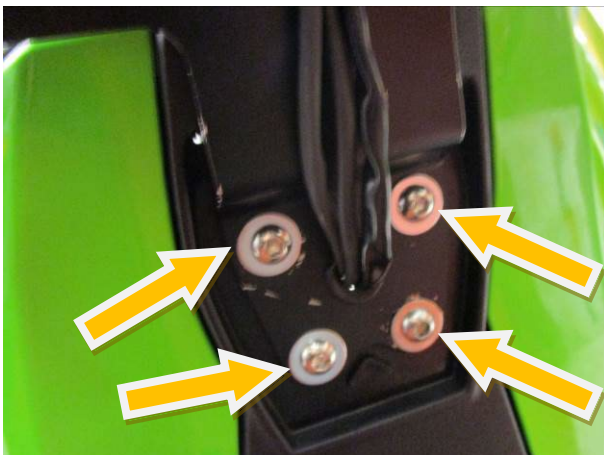
PICTURE 20



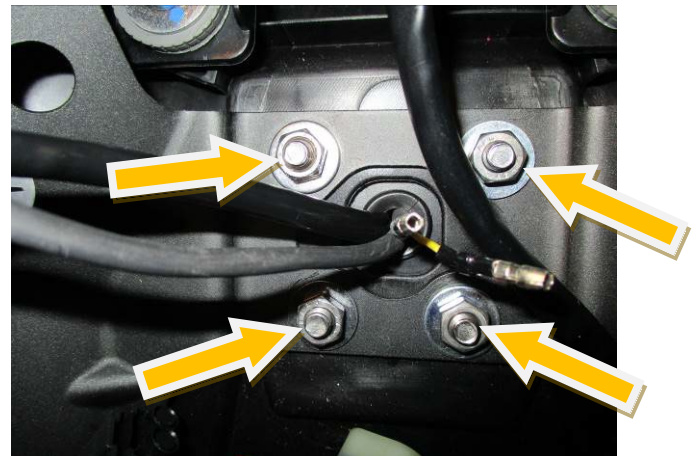
PICTURE 21



PICTURE 22



PICTURE 23



PICTURE 24



PICTURE 25



FITTING INSTRUCTIONS

- To fit the R&G tail tidy, first remove the pillion seat using the key as shown in **picture 1**.
- Pull the rider's seat catch as shown in **picture 2** and remove the rider seat.
- Remove the six push rivets arrowed in **picture 3** and remove the seat surround.
- Disconnect the three wiring plug sockets for the licence plate illuminator and indicators located under the seat catch arrowed in **picture 4**.
- Remove the four bolts arrowed in **picture 5** while supporting the original licence plate bracket.
- Carefully lower the original licence plate bracket while feeding the wiring through the hole in the under-tray as shown in **picture 6** and remove.
- Remove the two bolts arrowed in **picture 7**, this will allow the cover to be removed as shown in **picture 8**.
- Remove the cable tie holding the wiring in place and remove the wiring from the cable clip/guide.
- Remove the two screws arrowed in **picture 9** and remove the metal support bracket while feeding the indicator wires through the wiring grommets as shown in **picture 10**.
- Remove the indicator clamp screw arrowed in **picture 11**.
- Remove the indicator clamp as shown in **picture 12**.
- Remove the indicator spreader plate as shown in **picture 13**.
- Gently squeeze the indicator stem and remove the indicator as shown in **picture 14**.
- Repeat the above steps to remove the opposite indicator.
- Fit the indicators into the new licence plate bracket (**Item 1**) and secure as shown in **pictures 17 - 20**.
- Feed the wires of the new R&G licence plate illuminator (**Item 6**) through the central hole in the new licence plate bracket (**Item 1**) as shown in **picture 15**.
- Secure using the washers and nut supplied as shown in **picture 16**.
- Fit one length of heat-shrink (**Item 9**) to the wires and heat gently to shrink to fit.
- Fit the light shroud and use a small amount of adhesive to hold it in position as shown in **picture 15**.
- Feed all the wiring through the slot in the bracket and secure in place using one of the cable ties (**Item 8**) as shown in **picture 21**.
- Offer the new licence plate bracket into position on the under-tray while feeding the wiring through the slot in the under-tray as shown in **picture 22** and secure using the four bolts with washers (**Items 2 and 4**) and the four nuts with washers (**Items 3 and 4**) as shown in **pictures 23 and 24**, please ensure the wires are not crushed.
- Route the wiring as original and reconnect the licence plate illuminator using the supplied connector (**Item 5**) and indicators to the original plug sockets as shown in **picture 25** (if illumination fails please swap the bullet connectors over).
- Refit and secure the seat surround as original.
- Refit the rider and pillion seats as original.
- Refit the licence plate (it may require drilling).



- **IMPORTANT: IF FITTING A FULL-SIZE LICENCE PLATE AND PLACING IT FAR DOWN ON THE LICENCE PLATE HANGER, THERE IS A SMALL CHANCE OF THE LICENCE PLATE HITTING THE BACK WHEEL UNDER HEAVY LOAD AND OVER LARGE BUMPS IN THE ROAD. IT IS YOUR RESPONSIBILITY TO CHECK FOR THIS POSSIBILITY AND TAKE AVOIDING ACTION. FAILURE TO CHECK THIS COULD RESULT IN SERIOUS INJURY.**
- Depending on local laws, attach enclosed reflector (**Item 7**) in an appropriate location.
- Test the licence plate illuminator and all lights before riding.

ISSUE 1 - 03/11/2023 (MH)

CONSUMER NOTICE

The catalogue description and any exhibition of samples are only broad indications of the Products and R&G may make design changes which do not diminish their performance or visual appeal and supplying them in such state shall conform to the order. The Buyer acknowledges no representation or warranty (other than as to title) has been given or will apply to the Products other than those in R&G's order or confirmation and the Buyer confirms it has chosen the Products as being of merchantable quality and suitable for its particular purposes. Where R&G fits the Products or undertakes other services it shall exercise reasonable skill and care and rectify any fault free of charge unless the workmanship has been disturbed. The Buyer is responsible for ensuring that the warranty on the motorcycle is not affected by the fitting of the Products. On return of any defective Products R&G shall at its option either supply a replacement or refund the purchase money but shall not be liable if the Products have been modified or used or maintained otherwise than in accordance with R&G's or manufacturer's instructions and good engineering practice or if the defect arises from accident or neglect. Other than identified above and subject to R&G not limiting its liability for causing death and personal injury, it shall not be liable for indirect or consequential loss and otherwise its liability shall be limited to the amounts paid by the Buyer for the Products or the fitting or service concerned. These terms do not affect the Buyer's statutory rights.

R&G RETURNS POLICY (NON-FAULTY GOODS)

Returns must be pre-authorized (if not pre-authorized the return will be rejected). Goods may only be returned direct to us if they were purchased direct from us (customer must prove if necessary). Otherwise to be returned to original vendor. Goods must be in re-sellable condition, in the opinion of R&G. All returns are subject to a 25% restocking and handling fee (25% of the gross value exc. P&P – at the prevailing price at time of purchase). The customer must pay any and all carriage charges. No returns of discontinued products, unless within 14 days of purchase. This policy does not affect your statutory rights and does not refer to faulty goods.

R&G

Unit 1, Shelley's Lane, East Worldham, Alton, Hampshire, GU34 3AQ
Tel: +44 (0)1420 89007 Fax: +44 (0)1420 87301 www.rg-racing.com Email: info@rg-racing.com



NOTICE DE MONTAGE LP0371 SUPPORT DE PLAQUE



CE KIT CONTIENT LES ARTICLES ILLUSTRÉS ET ÉTIQUETES SUR LA PAGE.

CERTAINES PARTIES PEUVENT ÊTRE PRÉSENTES UNIQUEMENT POUR LA CLARTÉ DES INSTRUCTIONS.

NE PAS PROCÉDER AU MONTAGE TANT QUE VOUS N'ÊTES PAS SÛR QUE TOUTES LES PIÈCES SOIENT PRÉSENTES.

VEUILLEZ LIRE TOUTES LES INSTRUCTIONS AVANT DE CONTINUER.

EN CAS DE DOUTE LORS DU MONTAGE DE NOS PRODUITS, CONSULTEZ UN DE NOS REVENDEURS OU FAITES APPEL À UN TECHNICIEN QUALIFIÉ.

VEUILLEZ NOTER QUE LA FAÇON DONT LE KIT EST EMBALLÉ NE REPRÉSENTE PAS NECESSAIREMENT LA MANIÈRE DE LE MONTER SUR LA MOTO.

SI DES RONDELLES EN CAOUTCHOUC SONT UTILISÉES POUR MAINTENIR LES COMPOSANTS SUR LES BOULONS, ELLES PEUVENT ÊTRE JETÉES.

NOTICE DISPONIBLE AU TÉLÉCHARGEMENT SUR :

WWW.RG-RACING.COM

R&G

Unit 1, Shelley's Lane, East Worldham, Alton, Hampshire, GU34 3AQ
Tel: +44 (0)1420 89007 Fax: +44 (0)1420 87301 www.rg-racing.com Email: info@rg-racing.com

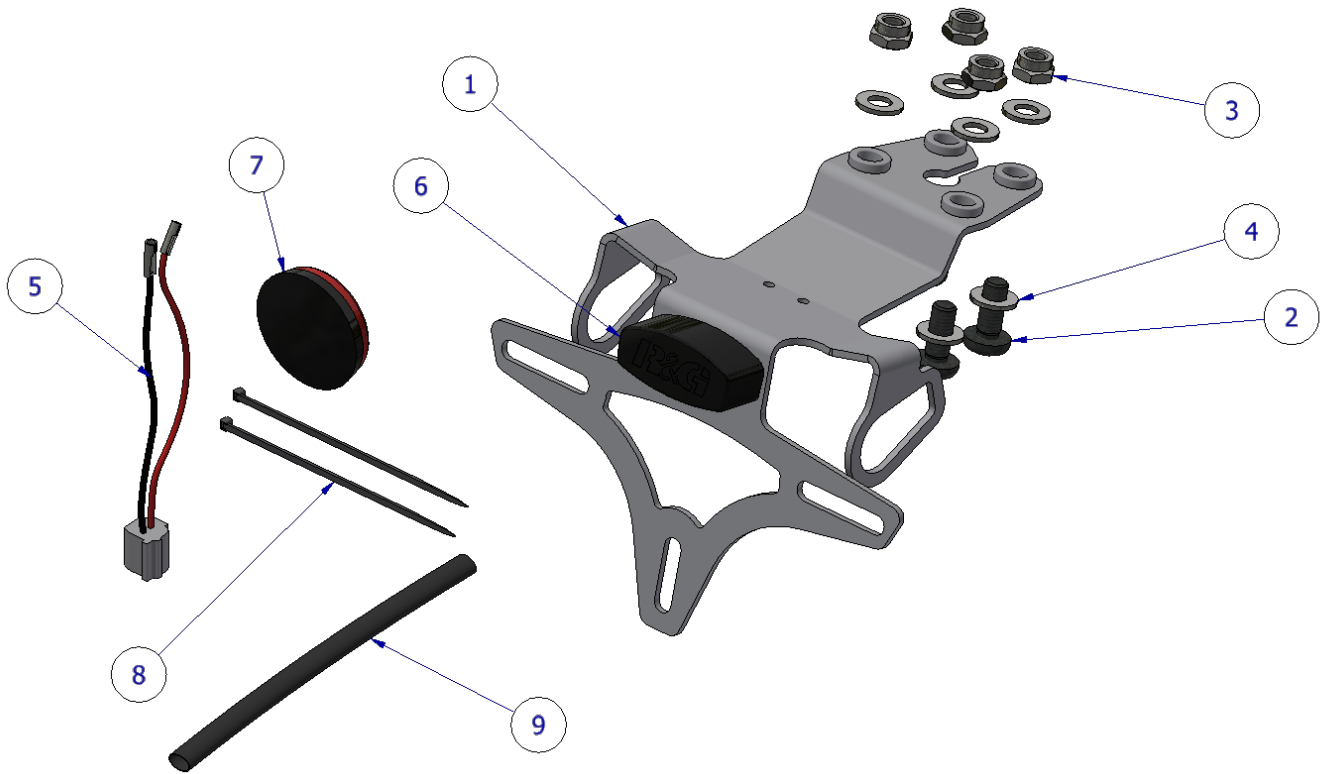


<u>TOOLS REQUIRED</u>	<u>VALEURS DE SERRAGE</u>
<ul style="list-style-type: none"> •Clé Allen 5mm •Clé à molette 10mm •Tournevis cruciforme. <ul style="list-style-type: none"> •Coupe câble. •Un peu d'adhésif. 	M4 BOULON = 8Nm M5 BOULON = 12Nm M6 BOULON = 15Nm M8 BOULON = 20Nm M10 BOULON = 40Nm M12 BOULON = 40Nm

ARTICLE NO.	DESCRIPTION	QTÉ
ARTICLE 1	SUPPORT DE PLAQUE (TB0296)	1
ARTICLE 2	M8 x 20mm BOULONS	4
ARTICLE 3	ÉCROUS	4
ARTICLE 4	RONDELLES	8
ARTICLE 5	CONNECTEUR DE FEU DE PLAQUE (CON0051)	1
ARTICLE 6	LA0002 ASSEMBLAGE DE FEU DE PLAQUE	1
ARTICLE 7	RÉFLECTEUR (REFL 3)	1
ARTICLE 8	2.5mm COLLIERS DE SERRAGE	2
ARTICLE 9	180mm MANCHON THERMO RÉTRACTABLE	1



SCHÉMA D'ENSEMBLE



PHOTOS DE MONTAGE



PHOTO 1



PHOTO 2

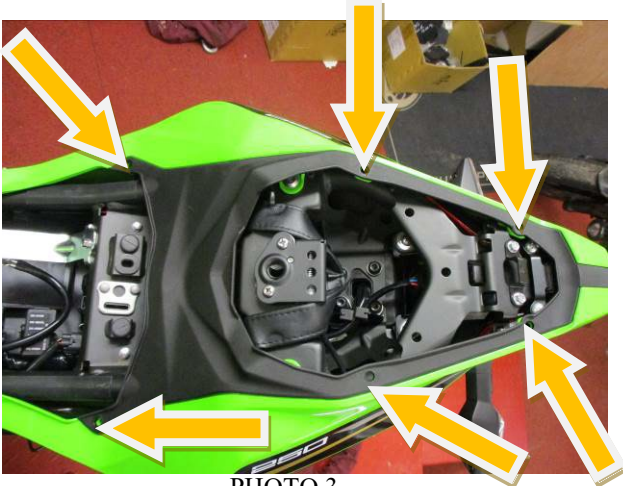


PHOTO 3



PHOTO 4

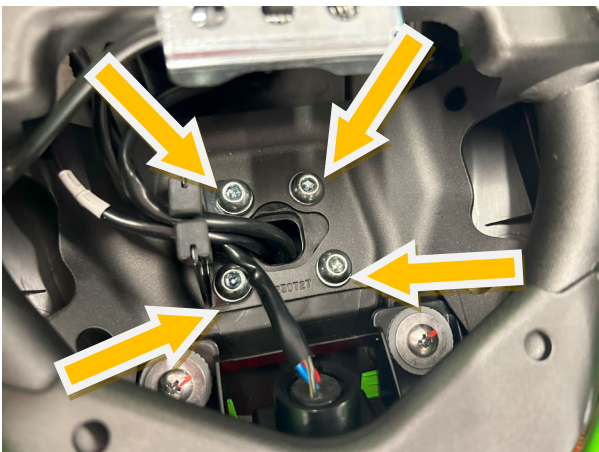


PHOTO 5



PHOTO 6



PHOTO 7



PHOTO 8

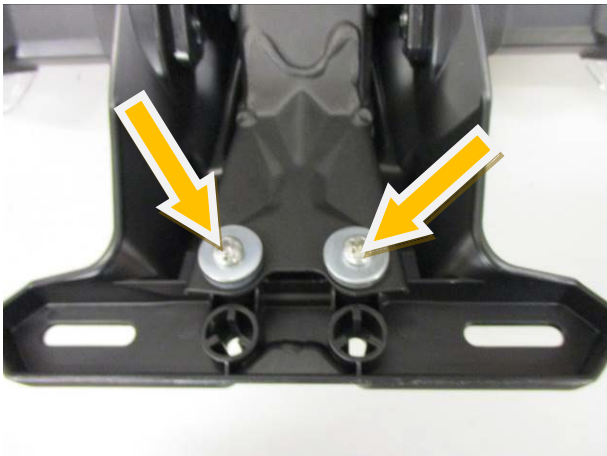


PHOTO 9

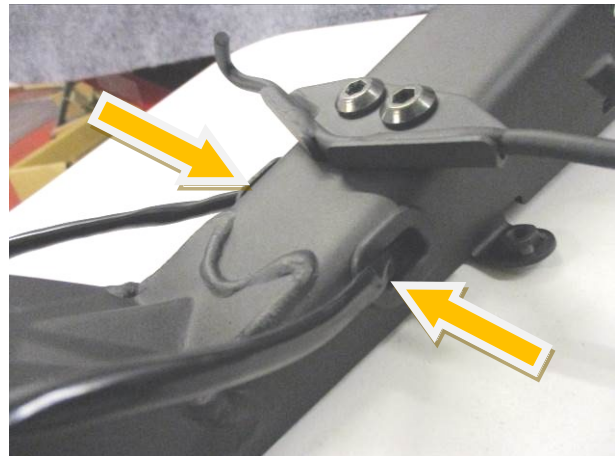


PHOTO 10



PHOTO 11



PHOTO 12



PHOTO 13



PHOTO 14

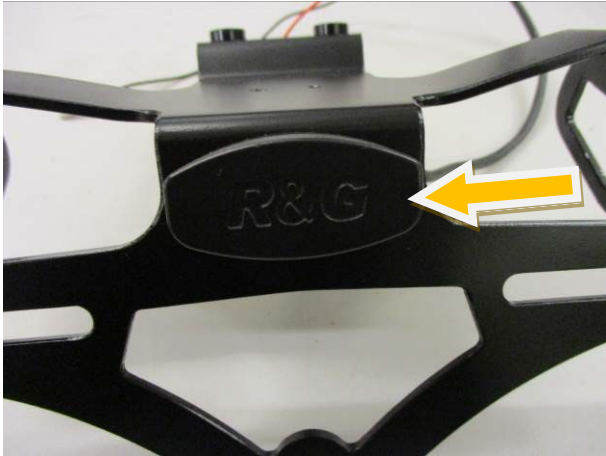


PHOTO 15

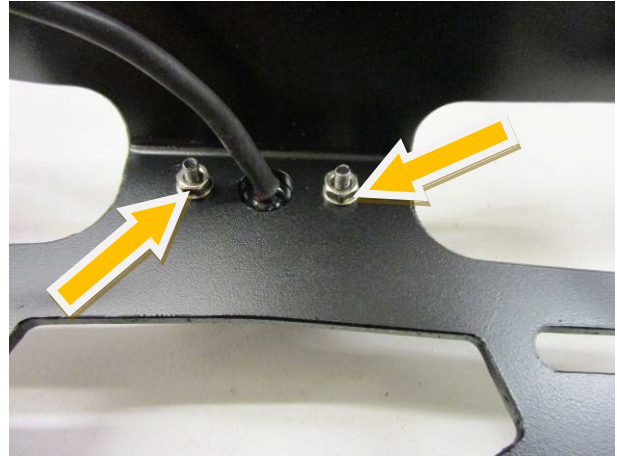


PHOTO 16



PHOTO 17



PHOTO 18



PHOTO 19



PHOTO 20



PHOTO 21



PHOTO 22

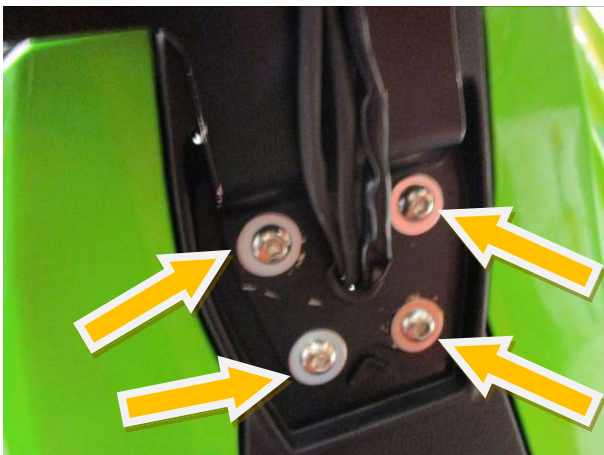


PHOTO 23

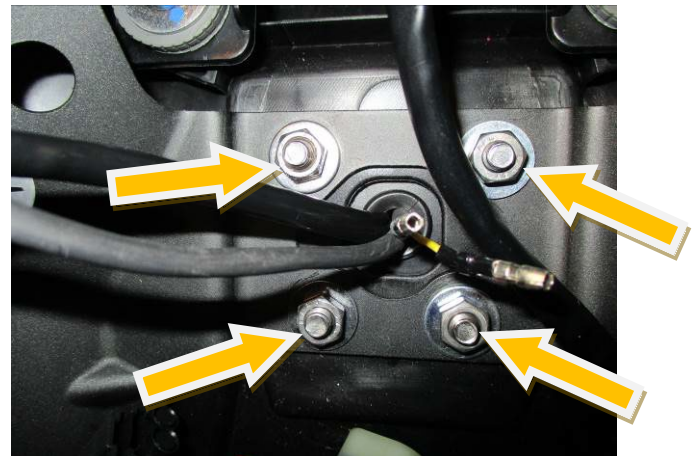


PHOTO 24



PHOTO 25



NOTICE DE MONTAGE

- Pour monter le support R&G, retirez d'abord la selle passager à l'aide de la clé comme indiqué sur la photo 1.
- Tirez le loquet de la selle pilote comme indiqué sur la photo 2 et retirez la selle pilote.
- Retirez les six rivets poussoirs fléchés sur la photo 3 et retirez le contour du siège.
- Débrancher les trois prises de câblage de feu de plaque d'immatriculation et des clignotants situées sous le loquet de selle indiqué par la flèche sur la photo 4.
- Retirez les quatre boulons fléchés sur la photo 5 tout en soutenant le support de plaque d'immatriculation d'origine.
- Abaissez soigneusement le support de plaque d'immatriculation d'origine tout en faisant passer le câblage à travers le trou du sous-plateau comme indiqué sur la photo 6 et retirez-le.
- Retirez les deux boulons fléchés sur la photo 7, cela permettra de retirer le couvercle comme indiqué sur la photo 8.
- Retirez l'attache-câble qui maintient le câblage en place et retirez le câblage du clip/guide de câble.
- Retirez les deux vis fléchées sur la photo 9 et retirez le support métallique tout en faisant passer les fils des clignotants à travers les passe-fils comme indiqué sur la photo 10.
- Retirez la vis de serrage du clignotant indiquée par la flèche sur la photo 11.
- Retirez la pince du clignotant comme indiqué sur la photo 12.
- Retirez la plaque d'épandage de clignotants comme indiqué sur la photo 13.
- Pressez doucement la tige du clignotant et retirez le clignotant comme indiqué sur la photo 14.
- Répétez les étapes ci-dessus pour supprimer l'autre clignotant.
- Montez les clignotants sur le nouveau support de plaque d'immatriculation (Article 1) et fixez-les comme indiqué sur les photos 17 à 20.
- Faire passer les fils du nouvel éclairage de plaque d'immatriculation R&G (Article 6) à travers le trou central du nouveau support de plaque d'immatriculation (Article 1) comme indiqué sur la photo 15.
- Fixez à l'aide des rondelles et de l'écrou fournis comme indiqué sur la photo 16.
- Montez une longueur de gaine thermo rétractable (article 9) sur les fils et chauffez doucement pour rétreindre le manchon sur le fil.
- Montez le cache-lumière et utilisez une petite quantité d'adhésif pour le maintenir en position comme indiqué sur la photo 15.
- Faites passer tout le câblage à travers la fente du support et fixez-le en place à l'aide de l'un des serre-câbles (article 8) comme indiqué sur la photo 21.
- Présenter le nouveau support de plaque d'immatriculation en position sur le sous-plateau tout en faisant passer le câblage à travers la fente du sous-plateau comme indiqué sur la photo 22 et fixer à l'aide des quatre boulons avec rondelles (articles 2 et 4) et des quatre écrous avec rondelles (articles 3 et 4) comme indiqué sur les photos 23 et 24, veuillez vous assurer que les fils ne soient pas écrasés.



- Acheminer le câblage comme d'origine et rebrancher l'éclairage de plaque d'immatriculation à l'aide du connecteur fourni (Article 5) et des clignotants aux prises d'origine comme indiqué sur la photo 25 (en cas de panne d'éclairage, permutez les connecteurs).
- Reposez et fixez l'encadrement du siège comme à l'origine.
- Reposer les selles pilote et passager comme d'origine.
- Reposez la plaque d'immatriculation (cela peut nécessiter un perçage).).
- **IMPORTANT : SI VOUS MONTEZ UNE PLAQUE D'IMMATRICULATION DE GRANDE TAILLE ET LA PLACEZ BIEN EN BAS SUR LE SUPPORT DE PLAQUE D'IMMATRICULATION, IL Y A UN RISQUE QUE LA PLAQUE D'IMMATRICULATION FRAPPE LA ROUE ARRIÈRE SOUS UNE CHARGE LOURDE ET SUR DE GROSSES BOSSES SUR LA ROUTE. IL EST DE VOTRE RESPONSABILITÉ DE VÉRIFIER CETTE POSSIBILITÉ ET DE PRENDRE DES MESURES POUR ÉVITER. NE PAS VÉRIFIER CELA POURRAIT ENTRAÎNER DES BLESSURES GRAVES.**
- En fonction des lois locales, fixez le réflecteur (article 7) fourni à un endroit approprié.
- Testez l'éclairage de la plaque d'immatriculation et tous les feux avant de rouler.

ISSUE 1 - 03/11/2023 (MH)