



**FITTING INSTRUCTIONS FOR LP0303BK LICENCE PLATE BRACKET  
FOR HONDA CRF250L/RALLY 2019-**



**THIS KIT CONTAINS THE ITEMS PICTURED AND LABELLED OVER PAGE.**

SOME PARTS MAY BE SHOWN FOR CLARITY OF INSTRUCTIONS ONLY.

DO NOT PROCEED UNTIL YOU ARE SURE ALL PARTS ARE PRESENT.

**PLEASE READ ALL INSTRUCTIONS BEFORE PROCEEDING.**

**IF IN ANY DOUBT WHEN FITTING OUR PRODUCTS, CONSULT ONE OF  
OUR DEALERS OR HAVE FITTED BY A QUALIFIED TECHNICIAN.**

PLEASE NOTE THAT THE WAY THE KIT IS PACKED DOES NOT NECESSARILY REPRESENT THE  
WAY OF MOUNTING TO THE BIKE.

IN THE EVENT OF RUBBER WASHERS BEING USED TO HOLD COMPONENTS ONTO BOLTS,  
THESE RUBBER WASHERS CAN BE THROWN AWAY.

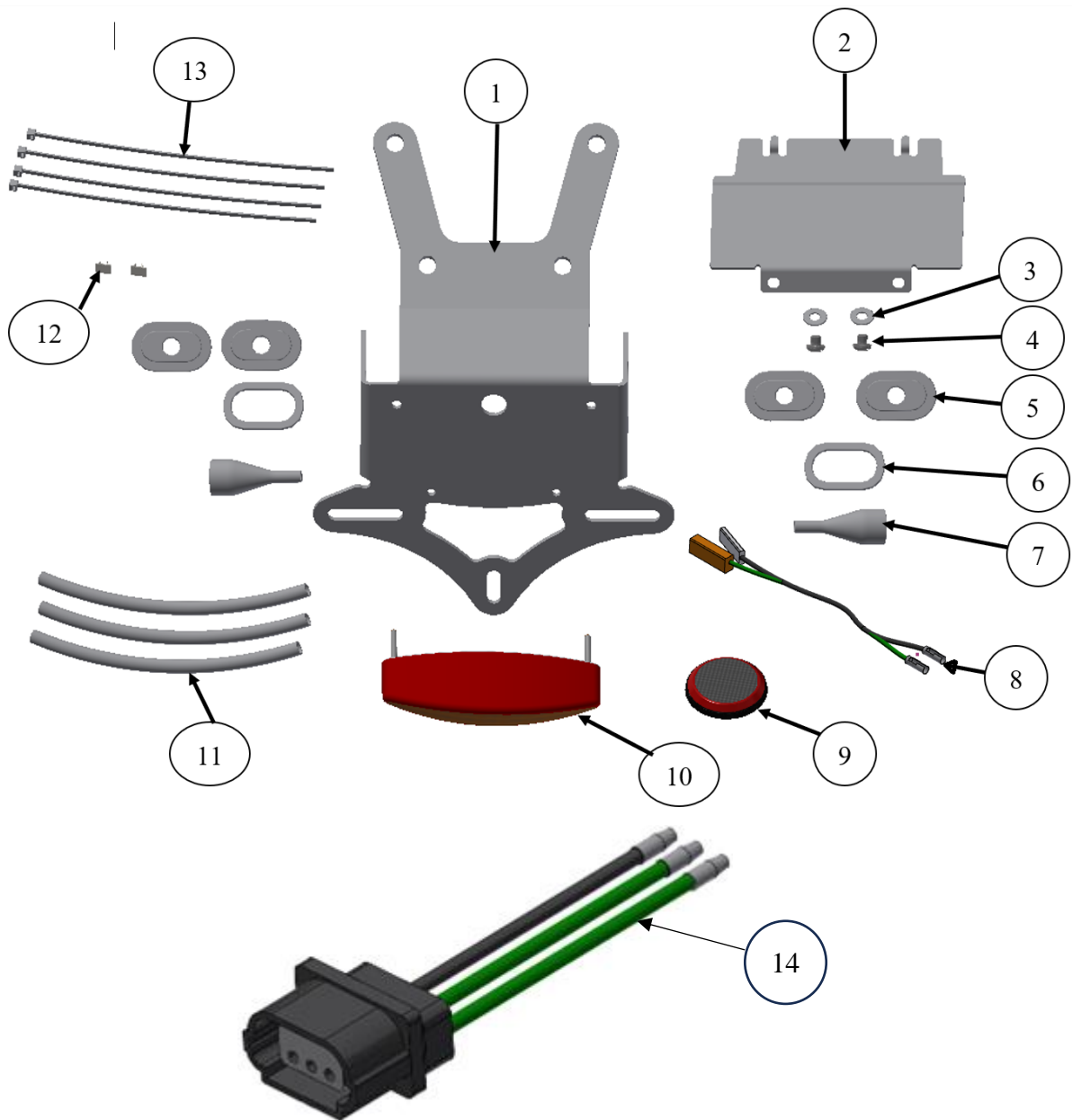
**DIGITAL COPIES OF THESE INSTRUCTIONS ARE AVAILABLE FROM:**

[WWW.RG-RACING.COM](http://WWW.RG-RACING.COM)



<b><u>TOOLS REQUIRED</u></b>	<b><u>GENERAL TORQUE SETTINGS</u></b>
<ul style="list-style-type: none"> <li>• Set of metric Allen keys to include 4, 5 &amp; 6mm A/F sizes.</li> <li>• 6, 10 and 12mm spanner or socket and wrench.               <ul style="list-style-type: none"> <li>• Phillips type driver.</li> </ul> </li> <li>• Cable cutters/ Electrical wire crimps.</li> </ul>	<p>M4 BOLT = 8Nm</p> <p>M5 BOLT = 12Nm</p> <p>M6 BOLT = 15Nm</p> <p>M8 BOLT = 20Nm</p> <p>M10 BOLT = 40Nm</p> <p>M12 BOLT = 40Nm</p>

<b>ITEM NO.</b>	<b>LEGEND</b>	<b>QTY</b>
ITEM 1	LICENCE PLATE BRACKET (TB0303 PART 1)	1
ITEM 2	LICENCE PLATE BRACKET/COVER PLATE (TB0303 PART 2)	1
ITEM 3	M5 WASHERS	2
ITEM 4	M5 x 5mm LONG BUTTON HEAD BOLTS	2
ITEM 5	MINI INDICATOR ADAPTORS (I0065)	4
ITEM 6	ORIGINAL INDICATOR ADAPTORS (I0032)	2
ITEM 7	INDICATOR WIRING COVERS (IWC0002)	2
ITEM 8	R&G MINI INDICATOR/REAR LIGHT CONNECTORS (CON0056)	2
ITEM 9	REFLECTOR (REFL 3)	1
ITEM 10	REPLACEMENT REAR LIGHT (LA0005)	2
ITEM 11	150mm LENGTHS OF HEATSHRINK	3
ITEM 12	CABLE CLIPS (CLIP 1)	2
ITEM 13	2.5mm CABLE TIES	4
ITEM 14	REAR LIGHT CONNECTOR (CON0076)	1





**Assembly Diagram**



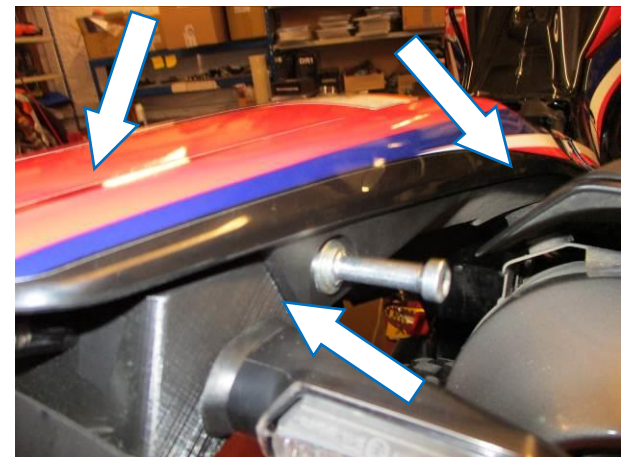
PICTURE 1



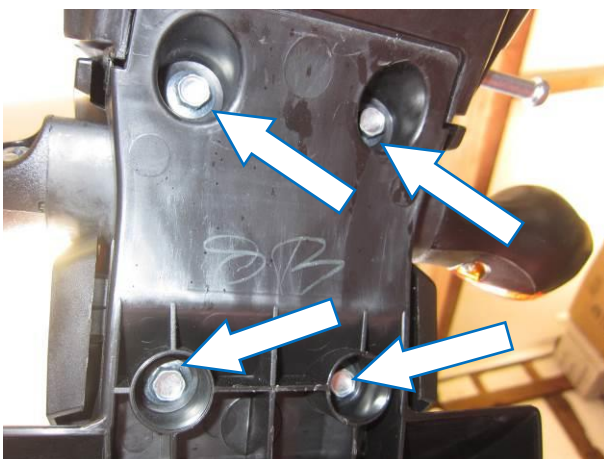
PICTURE 2



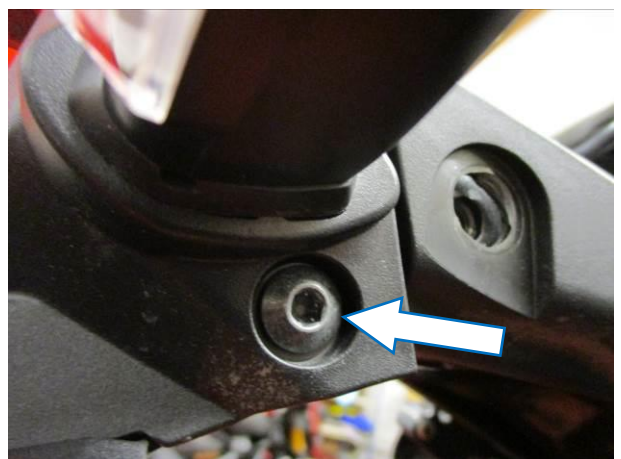
PICTURE 3



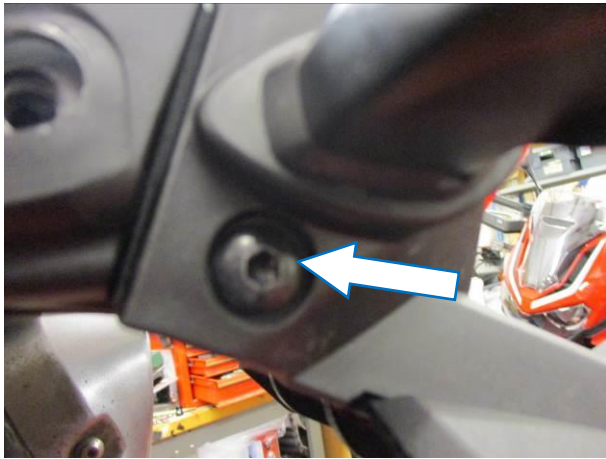
PICTURE 4



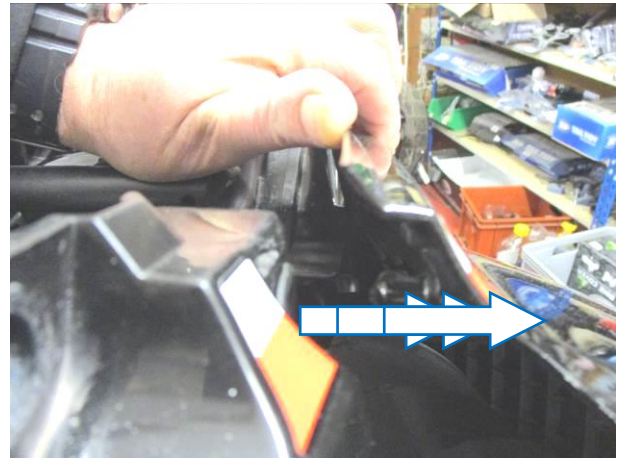
PICTURE 5



PICTURE 6



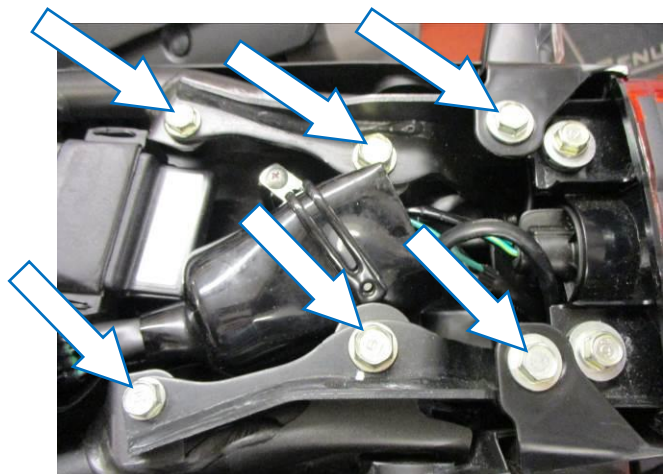
PICTURE 7



PICTURE 8



PICTURE 9



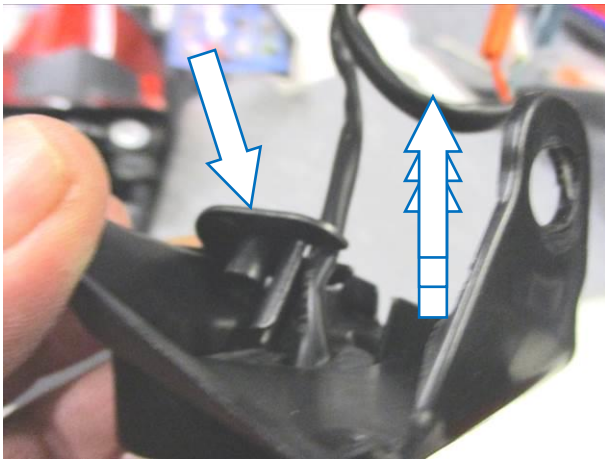
PICTURE 10



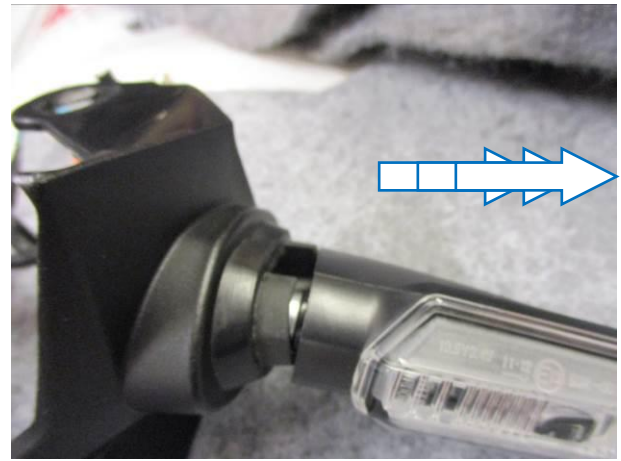
PICTURE 11



PICTURE 12



PICTURE 13



PICTURE 14



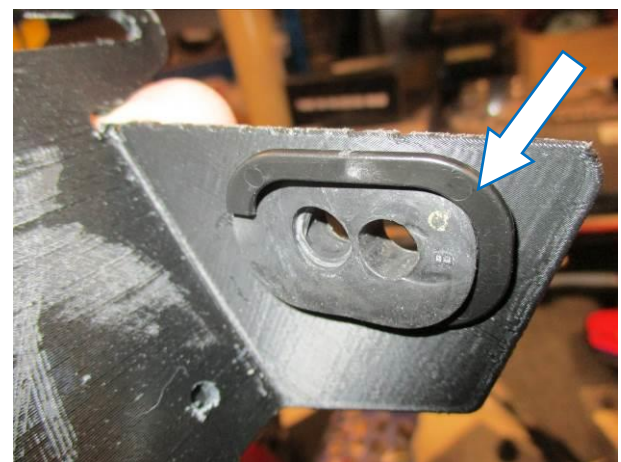
PICTURE 15



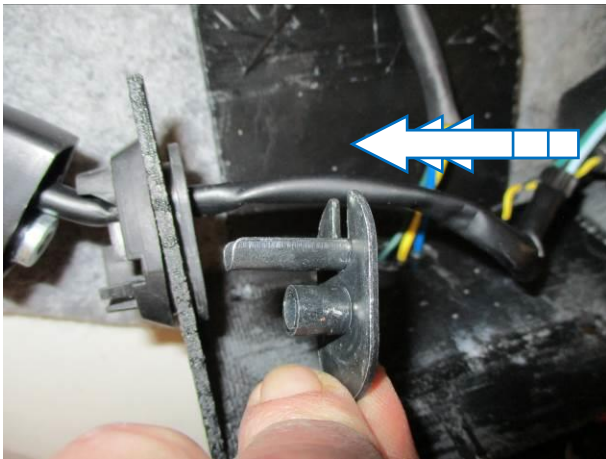
PICTURE 16



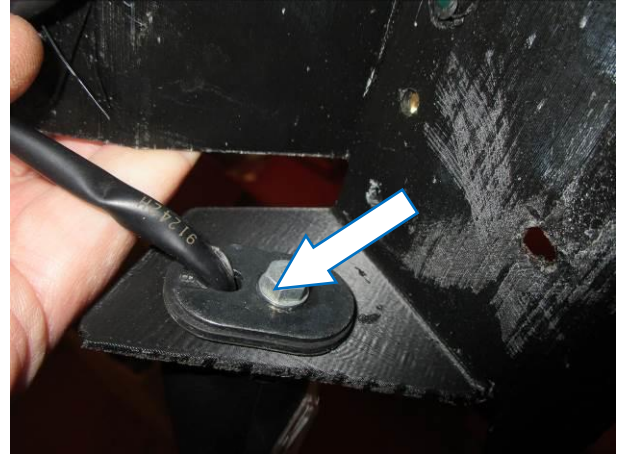
PICTURE 17



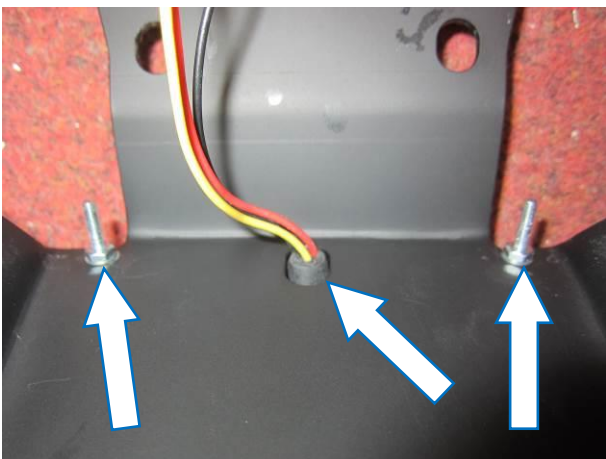
PICTURE 18



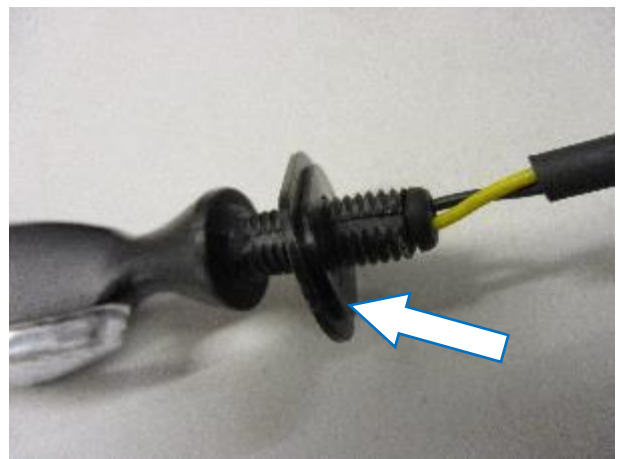
PICTURE 19



PICTURE 20



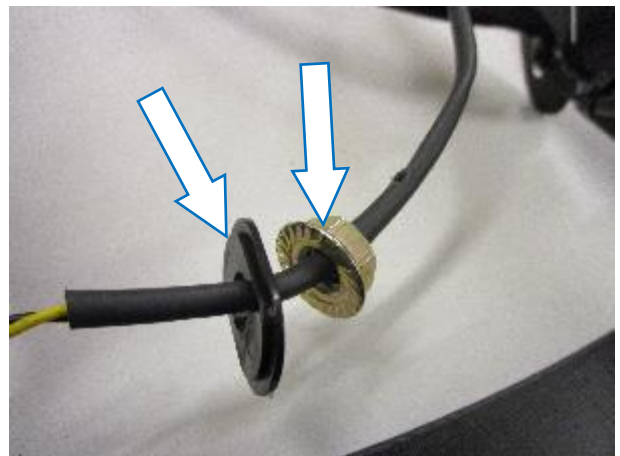
PICTURE 21



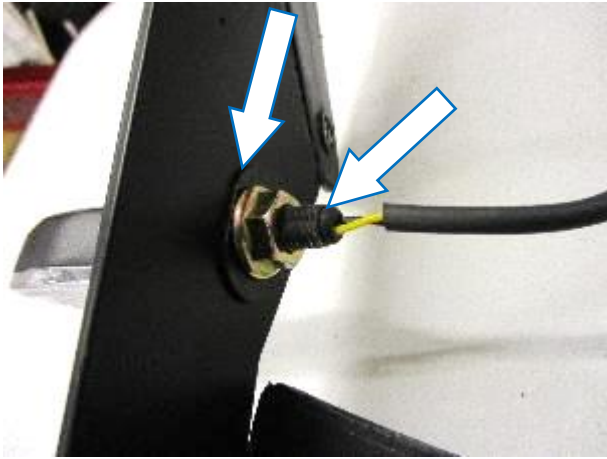
PICTURE 22



PICTURE 23



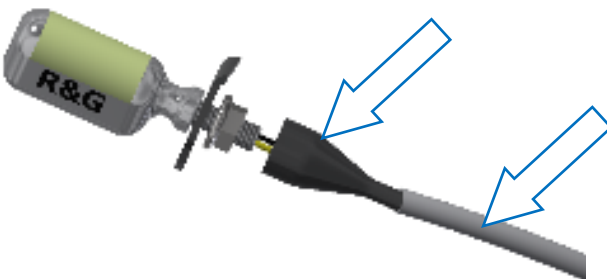
PICTURE 24



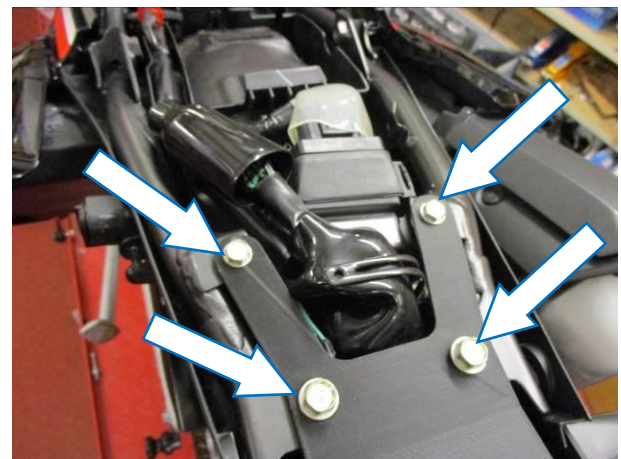
PICTURE 25



PICTURE 26



PICTURE 27



PICTURE 28



PICTURE 29



PICTURE 30





### **FITTING INSTRUCTIONS**

- To fit the R&G tail tidy, first remove the two forward bungee hooks/bolts arrowed in **pictures 1 and 2** then remove the seat.
- Remove the two rearward bungee hooks/bolts arrowed in **pictures 3 and 4**.
- Remove the four cover bolts arrowed in **picture 5** and remove the cover.
- Remove the two bolts arrowed in **pictures 6 and 7**.
- Unclip the rear seat cowling from both sides as shown in **picture 8** and remove the cowling.
- Disconnect the wiring plug sockets as shown in **picture 9 (please note it is a good idea to label/mark the connectors for reassembly)**.
- Remove the six bolts arrowed in **picture 10** and carefully remove the original licence plate bracket.

### **If reusing the original indicators**

- Remove the two screws arrowed in **picture 11**, this will allow the bracket to be split apart for access to the indicators.
- Remove the bolt arrowed in **picture 12**, then remove the cable guide/clamping bracket as shown in **picture 13**.
- Remove the indicator from the rubber mounting grommet as shown in **picture 14**, then remove the grommet as shown in **picture 15**.
- Cut the indicator spacer (**item 6**) as shown in **picture 16**.
- Gently squeeze the grommet and fit into the new licence plate bracket (**item 1**) as shown in **picture 17**, then use the cut spacer to tighten the location of the grommet as shown in **picture 18**.
- Refit the indicator into the grommet and refit the cable guide/clamping bracket as shown in **picture 19** and secure with the original bolt as shown in **picture 20**.
- Repeat the above for the opposite indicator.
- Fit the new rear light assembly (**item 10**) to the licence plate bracket and secure using the supplied nuts and washers as shown in picture 21.

### **If using the mini indicators**

- To fit the R&G Mini Indicators (R&G mini-indicator product code RG370 for bulb type, RG371 for LED type, RG373 for LED eyebrow or RG372 for Aero Style led type).
- Position one of the indicator adaptors (**item 5**) onto the wiring of each indicator as shown in **picture 22** (with the location spigot facing away from the indicator), place this assembly into the licence plate bracket as shown in **picture 23**.
- Place another of the adaptors onto the exposed wires (with the location spigot facing the bracket) and secure using the supplied nut as shown in **pictures 24 and 25**.
- Feed the indicator wiring through one of the nut/wire covers (**item 7**) as shown in **pictures below** and **picture 26** (it helps if a small amount of liquid detergent is used) and position the nut cover over the nut (repeat the above for the opposite indicator).



- Fit one length of heat-shrink (**item 11**) over the wires of each indicator so the heat-shrink fits over the stem of the nut/wire cover and gently heat until the heat-shrink contracts to the wiring and nut/wire cover as shown in **pictures below and picture 27**.



- Offer the new licence plate bracket into position and secure using the original bolts as shown in **picture 28**.
- Feed the wires into the under-seat space as original.
- Clip the new cable cover (**item 2**) to the under-tray as shown in **picture 29** and secure using the bolts with washers (**item 3 and 4**) as shown in **picture 30**.

**If using the original indicators**

- Connect the plug sockets to the wiring loom as original.

**If using the mini indicators**

- Use CON0056 (item 8) in place of the standard indicator connection. Connect the new indicators via the bullet connectors. (it is a good idea to check the operation of the indicators at this stage if illumination fails please swap the bullet connectors over).

**To connect the new rear light**

- Use the provided CON0076 (item 14) rear light connector to connect the rear light plug socket as original. See below for connections.

Original wiring colours-----R&G rear light wiring colours  
 GREEN-----BLACK  
 GREEN/WHITE-----RED  
 BLACK-----YELLOW

- Check the rear brake light at this stage. If illumination fails or does not behave as expected, swap the bullet connectors around.
- Use the supplied cable ties and clips (**items 12 and 13**) to neaten and tidy the wiring
- Refit and secure the rear seat cowl and side panels/covers as original.
- Refit the seat as original and licence plate (it may require drilling).
- **IMPORTANT: IF FITTING A FULL-SIZE LICENCE PLATE AND PLACING IT FAR DOWN ON THE LICENCE PLATE HANGER, THERE IS A SMALL CHANCE OF THE LICENCE PLATE HITTING THE BACK WHEEL UNDER HEAVY LOAD AND OVER LARGE BUMPS IN THE ROAD. IT IS YOUR RESPONSIBILITY TO CHECK FOR THIS POSSIBILITY AND TAKE AVOIDING ACTION. FAILURE TO CHECK THIS COULD RESULT IN SERIOUS INJURY.**



- Depending on local laws, attach enclosed reflector (**item 9**) in an appropriate location.
- Test all lights before riding.

ISSUE 1 29/01/2024 (DM)

#### **CONSUMER NOTICE**

The catalogue description and any exhibition of samples are only broad indications of the Products and R&G may make design changes which do not diminish their performance or visual appeal and supplying them in such state shall conform to the order. The Buyer acknowledges no representation or warranty (other than as to title) has been given or will apply to the Products other than those in R&G's order or confirmation and the Buyer confirms it has chosen the Products as being of merchantable quality and suitable for its particular purposes. Where R&G fits the Products or undertakes other services it shall exercise reasonable skill and care and rectify any fault free of charge unless the workmanship has been disturbed. The Buyer is responsible for ensuring that the warranty on the motorcycle is not affected by the fitting of the Products. On return of any defective Products R&G shall at its option either supply a replacement or refund the purchase money but shall not be liable if the Products have been modified or used or maintained otherwise than in accordance with R&G's or manufacturer's instructions and good engineering practice or if the defect arises from accident or neglect. Other than identified above and subject to R&G not limiting its liability for causing death and personal injury, it shall not be liable for indirect or consequential loss and otherwise its liability shall be limited to the amounts paid by the Buyer for the Products or the fitting or service concerned. These terms do not affect the Buyer's statutory rights.

#### **R&G RETURNS POLICY (NON-FAULTY GOODS)**

Returns must be pre-authorized (if not pre-authorized the return will be rejected). Goods may only be returned direct to us if they were purchased direct from us (customer must prove if necessary). Otherwise to be returned to original vendor. Goods must be in re-sellable condition, in the opinion of R&G. All returns are subject to a 25% restocking and handling fee (25% of the gross value exc. P&P - at the prevailing price at time of purchase). The customer must pay any and all carriage charges. No returns of discontinued products, unless within 14 days of purchase. This policy does not affect your statutory rights and does not refer to faulty goods.

R&G

Unit 1, Shelley's Lane, East Worldham, Alton, Hampshire, GU34 3AQ

Tel: +44 (0)1420 89007 Fax: +44 (0)1420 87301 [www.rg-racing.com](http://www.rg-racing.com) Email: [info@rg-racing.com](mailto:info@rg-racing.com)