

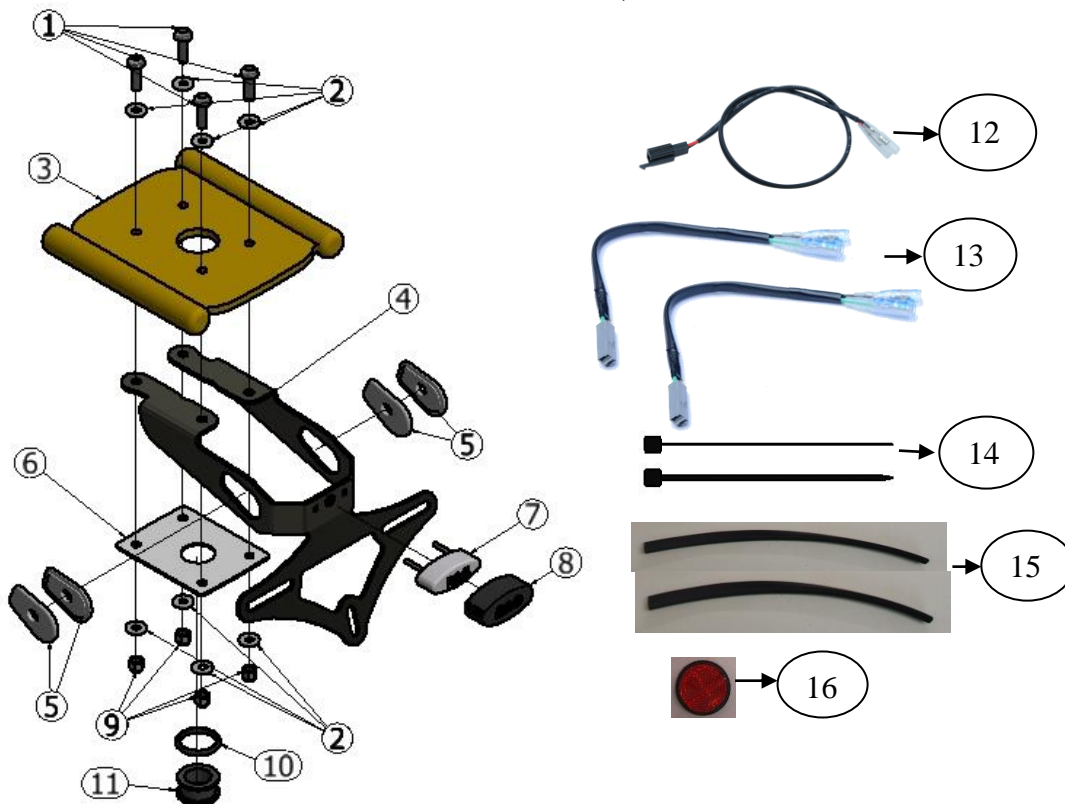


**FITTING INSTRUCTIONS FOR LP0214BK LICENCE PLATE BRACKET**  
**KAWASAKI Z650 2017-**



**THIS KIT CONTAINS THE ITEMS PICTURED AND LABELLED BELOW.**  
**DO NOT PROCEED UNTIL YOU ARE SURE ALL PARTS ARE PRESENT.**  
Please note that the way the kit is packed does not necessarily represent the way of mounting to the bike

THE PARTS SHOWN MAY BE REPRESENTATIVE ONLY (FOR CLARITY OF INSTRUCTIONS ONLY)





## **LEGEND**

Page | 2

- ITEM 1 = M6 x 20mm Long Button Head Bolts (x4)
- ITEM 2 = M6 Washers (x8)
- ITEM 3 = OEM Sub-frame (For illustration only; not included in the kit)
- ITEM 4 = R&G Licence Plate Bracket (TB0214 Part 1) ( x1)
- ITEM 5 = Mini Indicator Adapters (I0039) (x4)
- ITEM 6 = Cover Plate (TB0214 Part 2) (x1)
- ITEM 7 = Licence Plate Illuminator (LA0002) (x1)
- ITEM 8 = Licence Plate Illuminator Shroud (x1)
- ITEM 9 = M6 Nyloc Nuts (x4)
- ITEM 10 = O-RING (OR0006) (x1)
- ITEM 11 = Rubber Bung (RB0002) (x1)
- ITEM 12 = Licence Plate Illuminator Connector (Con0007) (x1)
- ITEM 13 = Indicator Connectors (Con0032) (x2)
- ITEM 14 = Cable Ties (x3)
- ITEM 15 = Heat Shrink Tubes 180mm Long (x3)
- ITEM 16 = Reflector (x1)

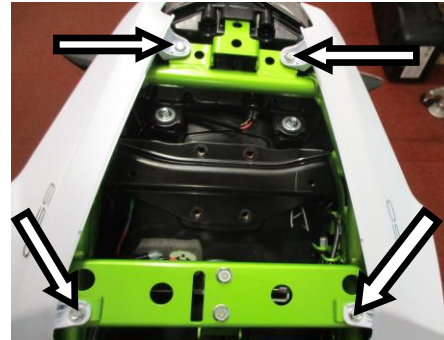
Please note that in cases where kits are packed with rubber washers holding the components onto the bolt – *the rubber washers should be thrown away!*

### **TOOLS REQUIRED**

- Set of metric Allen keys to include 4, 5 & 6 A/F size.
  - 10mm spanner.
- Small amount of super glue.



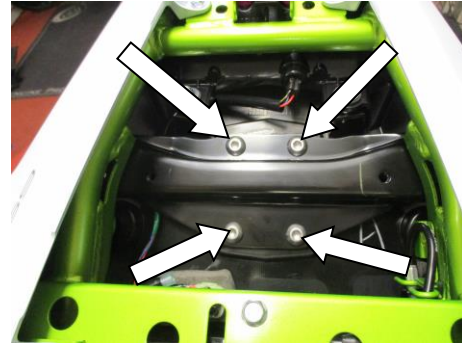
PICTURE 1



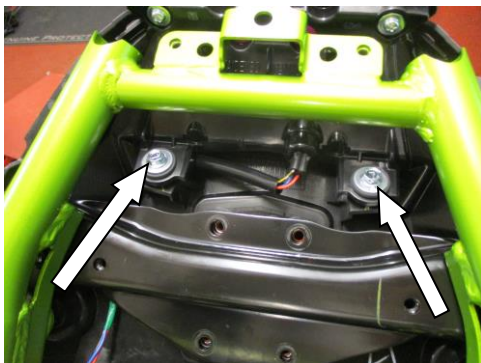
PICTURE 2



PICTURE 3



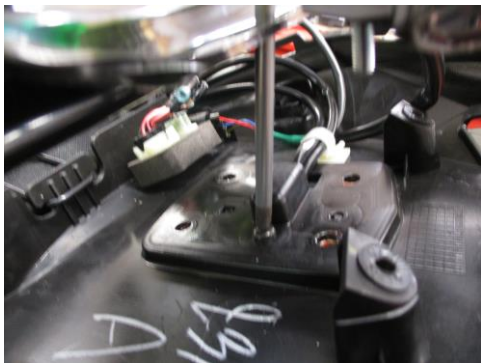
PICTURE 4



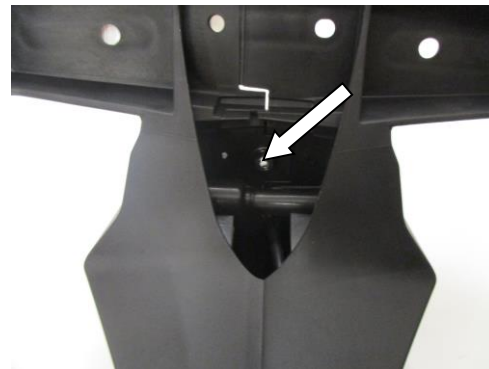
PICTURE 5



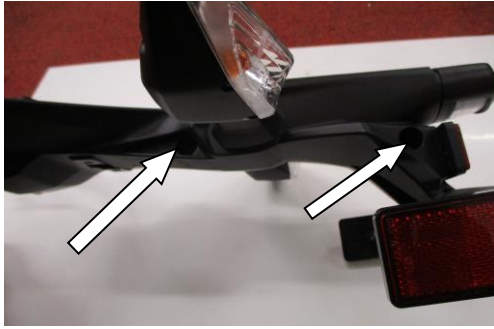
PICTURE 6



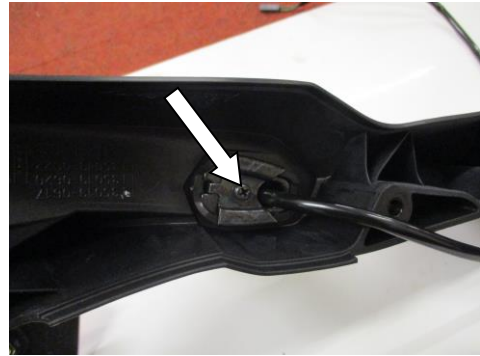
PICTURE 7



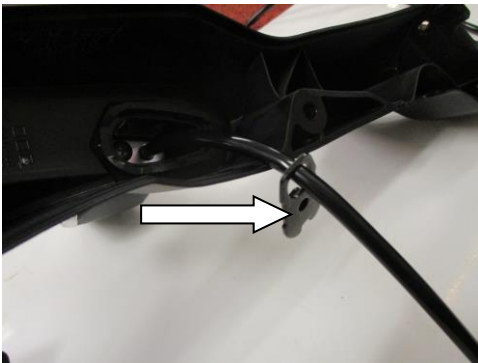
PICTURE 8



PICTURE 9



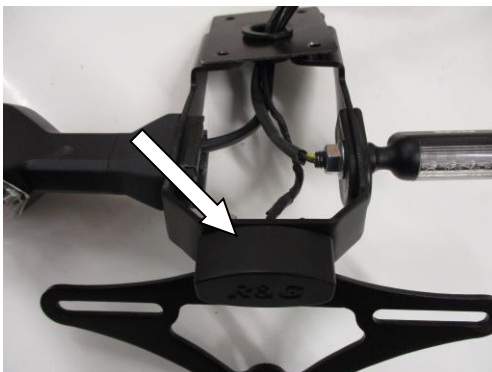
PICTURE 10



PICTURE 11



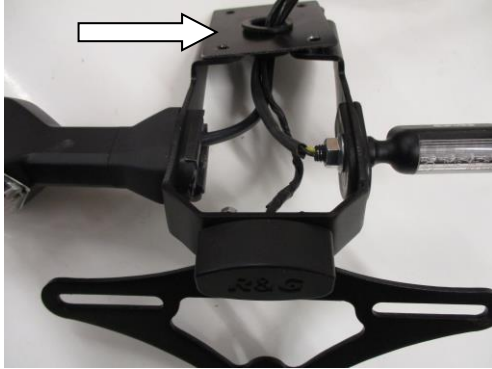
PICTURE 12



PICTURE 13



PICTURE 14



PICTURE 15

### **FITTING INSTRUCTIONS**

- To fit the R&G tail tidy, remove the seat using the key.
- Starting from the right-hand side of the bike, remove the bolt arrowed in Picture 1 using 4mm Allen key.
- Using a wrench and an 8mm socket, Remove the four bolts arrowed in Picture 2.
- Slide the RHS rear panel off and repeat the procedure to the LHS rear panel.
- Please locate the OEM license plate illuminator and the indicator connectors, disconnect all three connectors (Shown in Picture 3).
- Using a 5mm Allen key, remove the Four bolts securing the OEM license plate bracket as arrowed in picture 4.
- Using a wrench and an 8mm socket, remove the two bolts arrowed in Picture 5.
- Gently pull down the undertray assembly away from the sub-frame. Remove the screw arrowed in Picture 6 using a Phillip screwdriver (it's not necessary to remove the undertray completely); shown in picture 7.
- Once removed, pull away the OEM license plate bracket assembly from the bike. On the OEM license plate bracket, using a wrench and 10mm socket remove the nut securing the OEM reflector as arrowed in Picture 8.
- Remove the two screws located on the side of the OEM license plate bracket (arrowed in Picture 9) using a Phillips screwdriver.
- Split the OEM license plate bracket in halves, remove either rear indicator by removing the screw arrowed in picture 10 using a Phillips screwdriver. Remove the expander plate (arrowed in Picture 11) and gently squeeze out the indicator out from the OEM licence plate bracket. Repeat the procedure to the other indicator.



- From the kit, take the R&G license plate bracket (item 4) and fit both OEM indicators just removed to the licence plate as original (shown in picture 12).

*IF fitting R&G Mini indicators:*

- From the kit take the mini indicator adaptors ( Item 5) and locate the two plates together as illustrated in exploded diagram above.
- Fit the R&G Mini Indicator through the hole with the slot.
- Fit the bullet connectors on the R&G indicator and Indicator connectors (Item 13) as follows:
- If fitting R&G Aero Indicators with LED's
  - Indicator Yellow ----- → Indicator Connector Green*
  - Indicator Black ----- → Indicator Connector Black*
- If fitting R&G Mini Indicators with bulbs
  - Indicator Black/white ----- → Indicator Connector Green*
  - Indicator Black ----- → Indicator Connector Black*
- If fitting R&G Mini Indicators with LED's
  - Indicator Black/white ----- → Indicator Connector Green*
  - Indicator Black ----- → Indicator Connector Black*
- Fit one length of heat shrink supplied (item 15) to protect the indicator wiring on both indicators.
- From the kit, take the R&G License plate Illuminator (Item 7) and place it through the three in-line holes in the centre of license plate bracket (item 4) as shown in picture 13. Secure the license plate illuminator using M3 washers and nuts provided in the kit. Apply a little amount of super glue around the top surface of the license plate illuminator (Item 7) and place the license plate illuminator shroud (item 8) over.
- Feed the license plate illuminator wires through one of the heat-shrink tube (item 15) provided and using a suitable heat resource, shrink the tube to protect the wires.
- From the kit take the Rubber bung (item 11), O-ring (Item 10) and cover plate (Item 6). Locate the O-ring into the Rubber bung. Locate the rubber bung and O-Ring assembly into the provided hole in the cover plate (Item 6) (O-ring to sits below the cover plate), shown in Picture 14.
- Feed all the wires (License plate illuminator & indicators wiring) through the rubber bung from below and locate the cover plate assembly on top of the R&G license plate bracket as shown in Picture 15.
- Offer the whole assembly towards the sub-frame and feed the wires as original. Secure the assembly onto the sub-frame using M6 bolts (Item 1), M6 washers (Item 2) and M6 nyloc nuts (Item 9). *Note: Washers to be located as illustrated in exploded diagram above.* Tighten the nuts to 15Nm.
- From the kit take the licence plate illuminator connector (Item 12) and connect the male connector to main loom as original. Connect the bullet connectors in this scheme:
  - Illuminator Red ----- → wiring loom Red*
  - Illuminator Black ----- → wiring loom Black*

*If the license plate illuminator fails to illuminate, please swap the connectors around.*
- Connect the Indicator connectors to the main loom as original.
- Check all the lights for correct operations.
- Tidy the wiring using the cable ties (Item 14) provided.
- Re-fit the OEM undertray as original.
- Re-Fit the rear panels/ bodywork as original.
- Fit a licence plate to new licence plate bracket (it may require re-drilling

R&G Racing

Unit 1, Shelley's Lane, East Worldham, Alton, Hampshire, GU34 3AQ

Tel: +44 (0)1420 89007 Fax: +44 (0)1420 87301 [www.rg-racing.com](http://www.rg-racing.com) Email: [info@rg-racing.com](mailto:info@rg-racing.com)



- **IMPORTANT: WHEN FITTING A LICENCE PLATE (NO MORE THAN 130mm TALL) IT MUST BE PLACED AS HIGH AS POSSIBLE ON THE LICENCE PLATE HANGER AND CHECKED FOR COLLISION WITH THE REAR WHEEL WHEN THE SUSPENSION IS AT FULL COMPRESSION, THERE IS A SMALL CHANCE OF THE LICENCE PLATE HITTING THE BACK WHEEL UNDER HEAVY LOAD AND OVER LARGE BUMPS IN THE ROAD. IT IS YOUR RESPONSIBILITY TO CHECK FOR THIS POSSIBILITY AND TAKE AVOIDING ACTION. FAILURE TO CHECK THIS COULD RESULT IN SERIOUS INJURY.**
- Refit the seat.
- Depending on local laws, attach enclosed red reflector (item 16) in an appropriate location.
- **Please test the indicators, rear light and licence plate illuminator before riding.**

#### **MAXIMUM TORQUE SETTINGS**

- M4 Bolt = 8 Nm
- M5 Bolt = 12 Nm
- M6 Bolt = 15 Nm
- M8 Bolt = 20 Nm

ISSUE 1 06/02/2017 (HH)

#### **CONSUMER NOTICE**

The catalogue description and any exhibition of samples are only broad indications of the Products and R&G may make design changes which do not diminish their performance or visual appeal and supplying them in such state shall conform to the order. The Buyer acknowledges no representation or warranty (other than as to title) has been given or will apply to the Products other than those in R&G's order or confirmation and the Buyer confirms it has chosen the Products as being of merchantable quality and suitable for its particular purposes. Where R&G fits the Products or undertakes other services it shall exercise reasonable skill and care and rectify any fault free of charge unless the workmanship has been disturbed. The Buyer is responsible for ensuring that the warranty on the motorcycle is not affected by the fitting of the Products. On return of any defective Products R&G shall at its option either supply a replacement or refund the purchase money but shall not be liable if the Products have been modified or used or maintained otherwise than in accordance with R&G's or manufacturer's instructions and good engineering practice or if the defect arises from accident or neglect. Other than identified above and subject to R&G not limiting its liability for causing death and personal injury, it shall not be liable for indirect or consequential loss and otherwise its liability shall be limited to the amounts paid by the Buyer for the Products or the fitting or service concerned. These terms do not affect the Buyer's statutory rights.

#### **R&G RACING RETURNS POLICY (NON-FAULTY GOODS)**

Returns must be pre-authorized (if not pre-authorized the return will be rejected). Goods may only be returned direct to us if they were purchased direct from us (customer must prove if necessary). Otherwise to be returned to original vendor. Goods must be in re-sellable condition, in the opinion of R&G Racing. All returns are subject to a 25% restocking and handling fee (25% of the gross value exc. P&P – at the prevailing price at time of purchase). The customer must pay any and all carriage charges. No returns of discontinued products, unless within 14 days of purchase. This policy does not affect your statutory rights and does not refer to faulty goods.

R&G Racing

Unit 1, Shelley's Lane, East Worldham, Alton, Hampshire, GU34 3AQ

Tel: +44 (0)1420 89007 Fax: +44 (0)1420 87301 [www.rg-racing.com](http://www.rg-racing.com) Email: [info@rg-racing.com](mailto:info@rg-racing.com)



**NOTICE DE MONTAGE POUR LP0214BK SUPPORT DE PLAQUE  
KAWASAKI Z650 2017-**

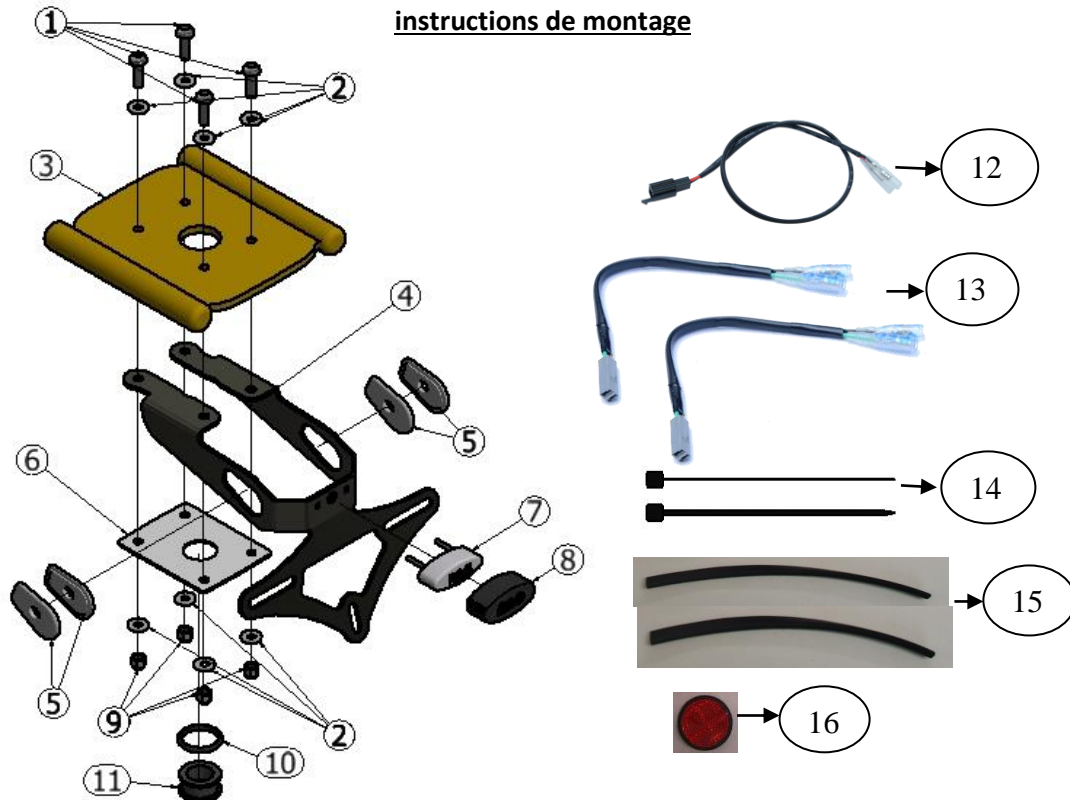
Page | 8



**Assurez vous que toutes les pièces soient présentes avant de procéder au montage.**

**La façon dont le kit est emballé ne correspond pas forcément à la façon de monter les pièces sur la moto.**

**Les pièces présentées peuvent n'être que représentatives, afin de faciliter et clarifier les instructions de montage**







## **LEGENDE**

- ARTICLE 1 = M6 x 20mm Boulons (x4)  
ARTICLE 2 = M6 Rondelles (x8)  
ARTICLE 3 = Sous cadre d'origine (Pour illustrer uniquement, non inclus dans le kit)  
ARTICLE 4 = Support de plaque R&G (TB0214 Partie 1) (x1)  
ARTICLE 5 = Adaptateurs de mini clignotants (I0039) (x4)  
ARTICLE 6 = Plaque de couverture (TB0214 Partie 2) (x1)  
ARTICLE 7 = Feu de plaque (LA0002) (x1)  
ARTICLE 8 = Linceul de feu de plaque (x1)  
ARTICLE 9 = M6 Ecrous (x4)  
ARTICLE 10 = Bague 0 (OR0006) (x1)  
ARTICLE 11 = Bouchon en caoutchouc (RB0002) (x1)  
ARTICLE 12 = Connecteur de feu de plaque (Con0007) (x1)  
ARTICLE 13 = Connecteurs (Con0004) (x2 sets)  
ARTICLE 14 = Colliers de serrage (x3)  
ARTICLE 15 = Tubes thermo rétractables de 180mm (x3)  
ARTICLE 16 = Réflecteur (x1)

Page | 9

Notez que si les kits sont emballés avec des rondelles en caoutchouc servant à tenir les composants, *ces rondelles doivent être jetées !*

## **OUTILS REQUIS**

- Jeu de clés Allen incluant les tailles 4, 5 & 6.
  - Clé à molette de 10mm.
  - Un peu de superglue.



PHOTO 1

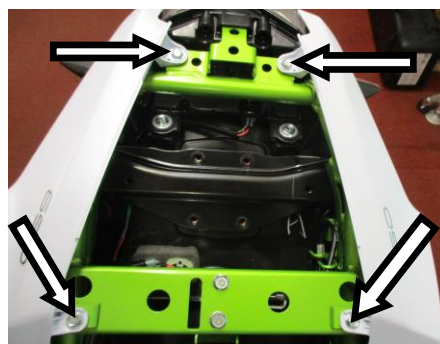


PHOTO 2



PHOTO 3

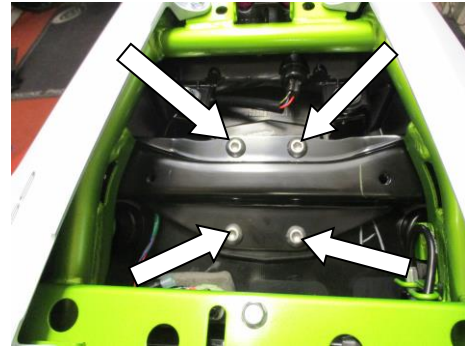


PHOTO 4

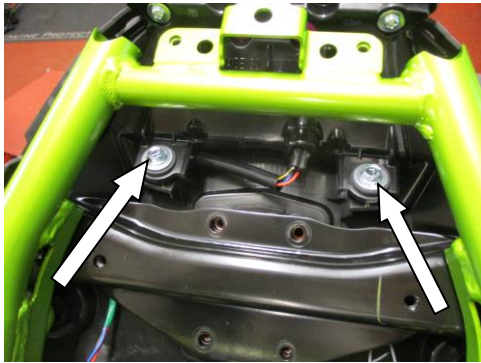


PHOTO 5



PHOTO 6

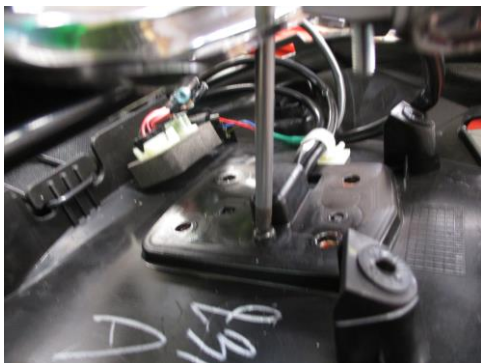


PHOTO 7

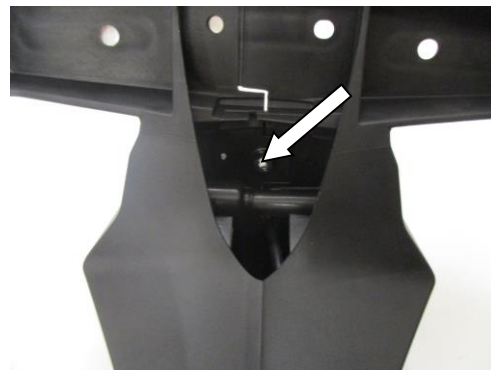


PHOTO 8

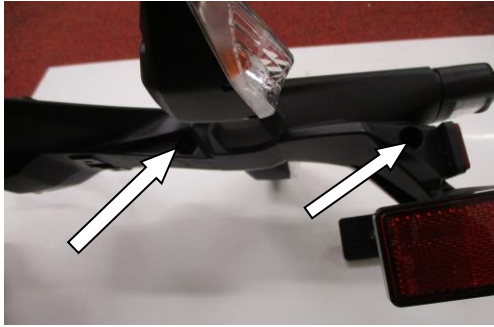


PHOTO 9



PHOTO 10

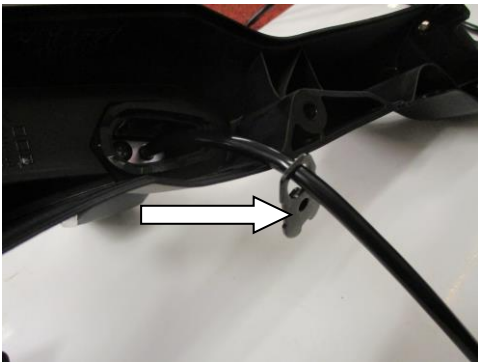


PHOTO 11



PHOTO 12

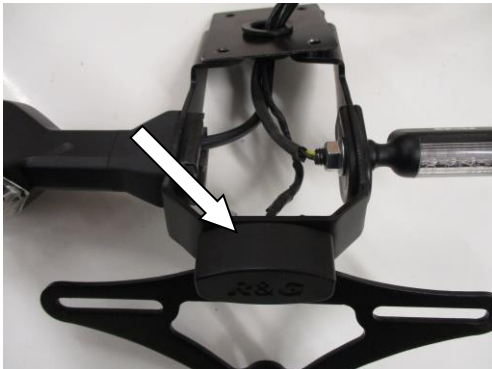


PHOTO 13



PHOTO 14

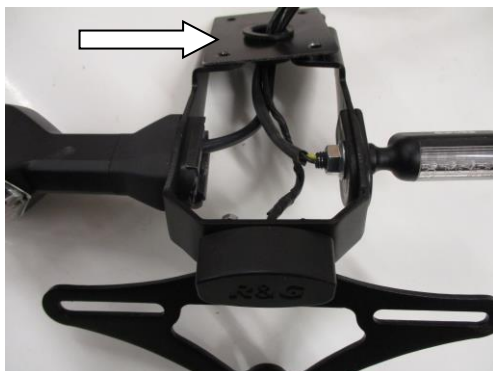


PHOTO 15

- Pour monter le support de plaque R&G, enlever le siège à l'aide de la clé.
- En commençant par le coté droit de la moto, enlever le boulon présent sur la photo 1 à l'aide d'une clé Allen 4mm.
- A l'aide d'une clé à douille de 8mm, enlever les 4 boulons comme indiqué sur la Photo 2.
- Glisser le panneau arrière droit et répéter cette action pour le panneau arrière gauche.
- Placer le feu de plaque d'origine et les connecteurs de clignotant, déconnecter les 3 connecteurs (indiqués sur la Photo 3).
- A l'aide d'une clé Allen de 5mm, enlever les 4 boulons qui fixent le support de plaque d'origine, voir la photo 4.
- A l'aide d'une clé à douille de 8mm, enlever les 2 boulons indiqués sur la Photo 5.
- Abaisser doucement l'assemblage de passage de roue du sous-cadre. Enlever la vis indiquée sur la Photo 6 en utilisant un tournevis cruciforme (il n'est pas nécessaire d'enlever le passage de roue complètement); indiqué sur la photo 7.
- Une fois enlevé, tirer le support de plaque d'origine de la moto. Sur le support de plaque d'origine, enlever l'écrou qui fixe le réflecteur d'origine, à l'aide d'une clé à douille de 10mm, voir Photo 8.
- Enlever les 2 vis placées sur coté du support de plaque d'origine (voir Photo 9) en utilisant un tournevis cruciforme.
- Séparer le support de plaque d'origine en moitiés, enlever le clignotant arrière en enlevant la vis indiquée sur la photo 10 à l'aide d'un tournevis cruciforme. Enlever la plaque d'expansion (voir Photo 11) puis extraire le clignotant du support de plaque d'origine. Répéter la procédure pour l'autre clignotant.

R&G Racing

Unit 1, Shelley's Lane, East Worldham, Alton, Hampshire, GU34 3AQ

Tel: +44 (0)1420 89007 Fax: +44 (0)1420 87301 [www.rg-racing.com](http://www.rg-racing.com) Email: [info@rg-racing.com](mailto:info@rg-racing.com)



- Prendre le support de plaque R&G du kit (article 4) puis monter les 2 clignotants d'origine tout juste enlevés du support de plaque d'origine, de la même façon qu'à l'origine (voir photo 12).

*Si vous montez les mini clignotants R&G:*

- Prendre les adaptateurs de mini clignotants du kit (Article 5) puis placer les 2 plaques ensemble comme illustré sur le schéma ci-dessus.
- Monter les minis clignotants R&G dans le trou qui possède une fente.
- Monter les connecteurs sur le clignotant R&G et les connecteurs R&G (Article 13) comme suit :

- Montage sur clignotants latéraux R&G à LED

*Clignotant Jaune ----- → Connecteur de clignotant Vert*

*Clignotant Noir ----- → Connecteur de clignotant Noir*

- Montage sur mini clignotants R&G à ampoule

*Clignotant Noir/blanc ----- → Connecteur de clignotant Vert*

*Clignotant Noir ----- → Connecteur de clignotant Noir*

- Montage sur mini clignotants R&G à LED

*Clignotant Noir/blanc ----- → Connecteur de clignotant Vert*

*Clignotant Noir ----- → Connecteur de clignotant Noir*

- Appliquer un manchon thermo rétractable fourni (article 15) pour protéger les fils de clignotant des 2 clignotants.

- Dans le kit, prendre le feu de plaque R&G (Article 7) puis placez le dans les 3 trous alignés au centre du support de plaque (article 4) voir photo 13. Fixer le feu de plaque à l'aide de rondelles M3 et écrous fournis dans le kit. Appliquer un peu de super glue autour de la surface du feu de plaque (Article 7) puis placer le lincol de feu de plaque autour (article 8).
- Passer les fils de feu de plaque dans un des manchons thermo rétractables (article 15) fourni puis utiliser une source de chaleur pour rétreindre le manchon destiné à protéger les fils.
- Dans le kit, prendre le bouchon en caoutchouc (article 11), la bague O (Article 10) puis la plaque de couverture (Article 6). Placer la bague O dans le bouchon en caoutchouc. Placer l'ensemble bouchon en caoutchouc et bague O dans le trou présent sur la plaque (Article 6) (La bague O se place sous la plaque de couverture), voir Photo 14.
- Passer tous les fils (Feu de plaque & fils de clignotants) dans le bouchon en caoutchouc par dessous puis placer la plaque de couverture sur le dessus du support de plaque R&G , voir Photo 15.
- Monter l'ensemble sur le sous-cadre et passer les fils comme à l'origine. Fixer l'assemblage sur le sous-cadre en utilisant les boulons M6 (Article 1), rondelles M6 (Article 2) et écrous M6 (Article 9). *Note: Les rondelles doivent être placées comme illustré sur le schéma ci-dessus.* Serrer les écrous à 15Nm.
- Prendre le connecteur de feu de plaque du kit (Article 12) et connecter le connecteur mâle au faisceau principal comme à l'origine. Connecter les connecteurs selon ce schéma :  
*Feu Rouge ----- → fils de faisceau Rouge*  
*Feu Noir ----- → fils de faisceau Noir*
- *Si l'éclairage du feu de plaque échoue, tournez les connecteurs.*
- Connecter les connecteurs de clignotants au faisceau principal comme à l'origine.
- Vérifier que tous les feux fonctionnent.
- Serrer les fils entre eux à l'aide des colliers de serrage (Article 14) fournis.
- Remonter le passage de roue d'origine comme à l'origine.

R&G Racing

Unit 1, Shelley's Lane, East Worldham, Alton, Hampshire, GU34 3AQ

Tel: +44 (0)1420 89007 Fax: +44 (0)1420 87301 [www.rg-racing.com](http://www.rg-racing.com) Email: [info@rg-racing.com](mailto:info@rg-racing.com)



- Remonter les panneaux arrière comme à l'origine.
- Remettre la plaque d'immatriculation (Peut nécessiter un perçage).
- **IMPORTANT: Si vous installez une grosse plaque, il y a un risque que la plaque entre en contact avec la roue arrière en cas de choc sur la route (bosse, grosse charge etc...). Il est de votre responsabilité de vérifier que cela ne puisse pas se produire. Ne pas effectuer ces vérifications peut entraîner des dommages ainsi que des blessures graves pour le pilote.**
- Remettre le siège.
- Selon la loi locale, attachez le réflecteur (article 16) fourni à son emplacement approprié
- Vérifiez que les clignotants et les feux de plaque fonctionnent bien avant de prendre la route.

### **COUPLES DE SERRAGE RECOMMANDÉS :**

M4 BOULON = 8Nm  
M5 BOULON = 12Nm  
M6 BOULON = 15Nm  
M8 BOULON = 20Nm

ISSUE 1 06/02/2017 (HH)

#### **CONSUMER NOTICE**

The catalogue description and any exhibition of samples are only broad indications of the Products and R&G may make design changes which do not diminish their performance or visual appeal and supplying them in such state shall conform to the order. The Buyer acknowledges no representation or warranty (other than as to title) has been given or will apply to the Products other than those in R&G's order or confirmation and the Buyer confirms it has chosen the Products as being of merchantable quality and suitable for its particular purposes. Where R&G fits the Products or undertakes other services it shall exercise reasonable skill and care and rectify any fault free of charge unless the workmanship has been disturbed. The Buyer is responsible for ensuring that the warranty on the motorcycle is not affected by the fitting of the Products. On return of any defective Products R&G shall at its option either supply a replacement or refund the purchase money but shall not be liable if the Products have been modified or used or maintained otherwise than in accordance with R&G's or manufacturer's instructions and good engineering practice or if the defect arises from accident or neglect. Other than identified above and subject to R&G not limiting its liability for causing death and personal injury, it shall not be liable for indirect or consequential loss and otherwise its liability shall be limited to the amounts paid by the Buyer for the Products or the fitting or service concerned. These terms do not affect the Buyer's statutory rights.

#### **R&G RACING RETURNS POLICY (NON-FAULTY GOODS)**

Returns must be pre-authorized (if not pre-authorized the return will be rejected). Goods may only be returned direct to us if they were purchased direct from us (customer must prove if necessary). Otherwise to be returned to original vendor. Goods must be in re-sellable condition, in the opinion of R&G Racing. All returns are subject to a 25% restocking and handling fee (25% of the gross value exc. P&P – at the prevailing price at time of purchase). The customer must pay any and all carriage charges. No returns of discontinued products, unless within 14 days of purchase. This policy does not affect your statutory rights and does not refer to faulty goods.