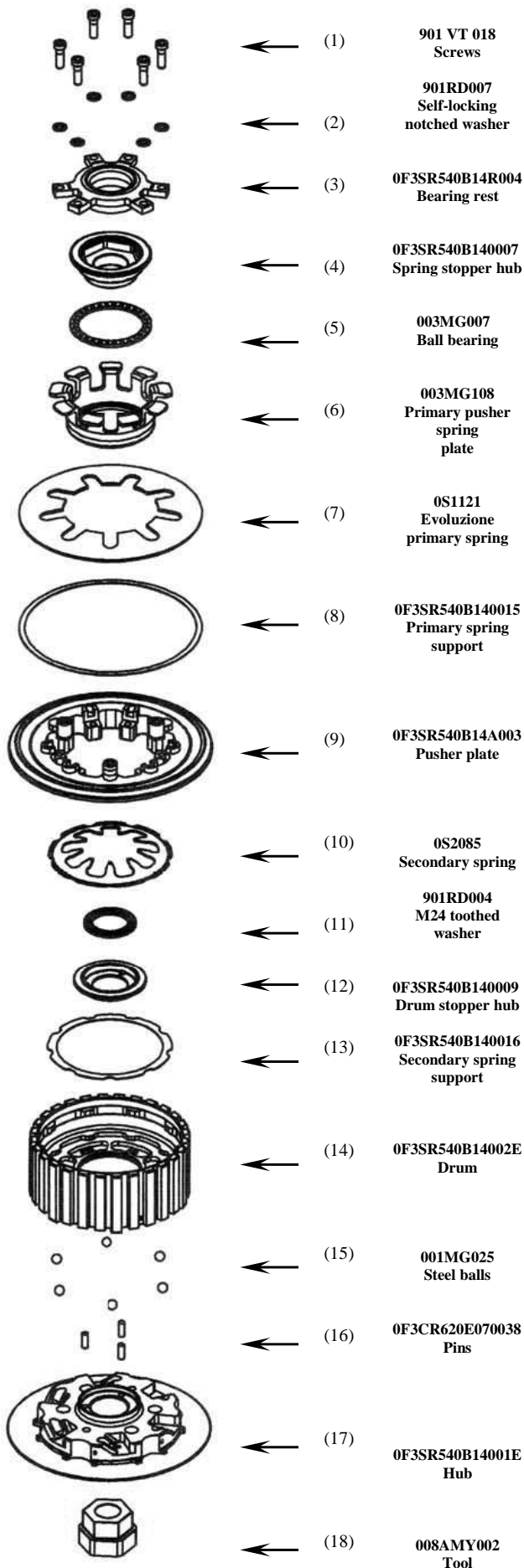


# 0F3SR540B140000 / FSU-S040

# SLIPPER CLUTCH KIT FOR SUZUKI GSX 600/750

## ASSEMBLING DIRECTIONS



Hub/drum kit assembly:

Put 6 steel balls (15), at the end of hub grooves (17), with some grease.

Screw the drum (14) with a M6x1 screw on hub (17) in rest position.

Insert hub kit on primary shaft.

Install original plates, total thickness of plates kit must be 47.7mm.

**N.B: Attention! If in plates kit there are two rings, do not insert them absolutely.**

Take the screw previously assembled off.

Put the drum stopper hub (12) with some grease on hub (17).

Insert toothed washer (11) in the upper part of drum stopper hub (12), with the convex part facing up.

Assemble the secondary spring (10) into its seat into the drum (14), with some grease.

Insert pusher plate (9) into drum seats (14) into pusher plate (9), insert Racing Evoluzione spring (7).

Insert pusher spring plate (6) into the previously assembled spring keeping it with the shaped part of the bearing rest facing up as shown. Be careful that the 9 wings cross the spring 9 legs (7); insert ball bearing (5) and finally spring stopper hub (4).

Screw spring stopper hub on primary shaft, locking with the dynamometric key to the torque as suggested by the manufacturer. Use the assembling special tool (18), included.

Assemble bearing rest holder completely: assemble the bearing rest and original bearing pin holder into bearing rest holder seat (3).

Put bearing rest holder (3) into its seat on pusher plate (9), insert 6 M5 anti-screwing toothed washers (2) into 6 screws (1), apply some grease on screws and lock at 2.3 N/m.

**NB:** once completed assembly, operate again and again the clutch lever, check that pusher plate performs opening and closing movements correctly.

Put bearing rest holder (3) into its seat on pusher plate (9), insert 6 M5 anti-screwing toothed washers (2) into 6 screws (1), apply some grease on screws and lock at 2.3 N/m.

Put bearing rest holder (3) into its seat on pusher plate (9), insert 6 M5 anti-screwing toothed washers (2) into 6 screws (1), apply some grease on screws and lock at 2.3 N/m.

Put bearing rest holder (3) into its seat on pusher plate (9), insert 6 M5 anti-screwing toothed washers (2) into 6 screws (1), apply some grease on screws and lock at 2.3 N/m.

Put bearing rest holder (3) into its seat on pusher plate (9), insert 6 M5 anti-screwing toothed washers (2) into 6 screws (1), apply some grease on screws and lock at 2.3 N/m.

Put bearing rest holder (3) into its seat on pusher plate (9), insert 6 M5 anti-screwing toothed washers (2) into 6 screws (1), apply some grease on screws and lock at 2.3 N/m.

Put bearing rest holder (3) into its seat on pusher plate (9), insert 6 M5 anti-screwing toothed washers (2) into 6 screws (1), apply some grease on screws and lock at 2.3 N/m.

Put bearing rest holder (3) into its seat on pusher plate (9), insert 6 M5 anti-screwing toothed washers (2) into 6 screws (1), apply some grease on screws and lock at 2.3 N/m.

Put bearing rest holder (3) into its seat on pusher plate (9), insert 6 M5 anti-screwing toothed washers (2) into 6 screws (1), apply some grease on screws and lock at 2.3 N/m.

Put bearing rest holder (3) into its seat on pusher plate (9), insert 6 M5 anti-screwing toothed washers (2) into 6 screws (1), apply some grease on screws and lock at 2.3 N/m.

Put bearing rest holder (3) into its seat on pusher plate (9), insert 6 M5 anti-screwing toothed washers (2) into 6 screws (1), apply some grease on screws and lock at 2.3 N/m.

Put bearing rest holder (3) into its seat on pusher plate (9), insert 6 M5 anti-screwing toothed washers (2) into 6 screws (1), apply some grease on screws and lock at 2.3 N/m.

Put bearing rest holder (3) into its seat on pusher plate (9), insert 6 M5 anti-screwing toothed washers (2) into 6 screws (1), apply some grease on screws and lock at 2.3 N/m.

Put bearing rest holder (3) into its seat on pusher plate (9), insert 6 M5 anti-screwing toothed washers (2) into 6 screws (1), apply some grease on screws and lock at 2.3 N/m.

Put bearing rest holder (3) into its seat on pusher plate (9), insert 6 M5 anti-screwing toothed washers (2) into 6 screws (1), apply some grease on screws and lock at 2.3 N/m.

Put bearing rest holder (3) into its seat on pusher plate (9), insert 6 M5 anti-screwing toothed washers (2) into 6 screws (1), apply some grease on screws and lock at 2.3 N/m.

Put bearing rest holder (3) into its seat on pusher plate (9), insert 6 M5 anti-screwing toothed washers (2) into 6 screws (1), apply some grease on screws and lock at 2.3 N/m.

Put bearing rest holder (3) into its seat on pusher plate (9), insert 6 M5 anti-screwing toothed washers (2) into 6 screws (1), apply some grease on screws and lock at 2.3 N/m.

Put bearing rest holder (3) into its seat on pusher plate (9), insert 6 M5 anti-screwing toothed washers (2) into 6 screws (1), apply some grease on screws and lock at 2.3 N/m.

Put bearing rest holder (3) into its seat on pusher plate (9), insert 6 M5 anti-screwing toothed washers (2) into 6 screws (1), apply some grease on screws and lock at 2.3 N/m.

Put bearing rest holder (3) into its seat on pusher plate (9), insert 6 M5 anti-screwing toothed washers (2) into 6 screws (1), apply some grease on screws and lock at 2.3 N/m.

Put bearing rest holder (3) into its seat on pusher plate (9), insert 6 M5 anti-screwing toothed washers (2) into 6 screws (1), apply some grease on screws and lock at 2.3 N/m.

Put bearing rest holder (3) into its seat on pusher plate (9), insert 6 M5 anti-screwing toothed washers (2) into 6 screws (1), apply some grease on screws and lock at 2.3 N/m.

Put bearing rest holder (3) into its seat on pusher plate (9), insert 6 M5 anti-screwing toothed washers (2) into 6 screws (1), apply some grease on screws and lock at 2.3 N/m.

### GENERAL SAFETY REGULATIONS

- IN THIS SHEET ARE REPORTED THE DIRECTIONS TO PERFORM CORRECTLY THE CLUTCH ASSEMBLY OPERATIONS.
- STM RESERVES THE RIGHT, WITHOUT NOTICE, TO INTRODUCE ANY TECHNICAL CHANGE WHENEVER DEEMED IT TO BE NECESSARY TO IMPROVE FUNCTION AND QUALITY OF THE PRODUCTS.
- ASSEMBLY OPERATIONS MUST BE PERFORMED BY A SKILLED TECHNICIAN AND MUST BE SCRUPULOUSLY OBSERVED.
- BEFORE MOUNTING THE CLUTCH MAKE A COMPLETE INSPECTION OF THE MOTORBIKE COMPONENTS, IN ORDER TO VERIFY THE POSSIBLE PRESENCE OF FAULTS OR ANOMALIES ON THE VEHICLE.
- MAKE SURE THAT THERE ARE NO MISSING/DAMAGED PARTS IN THE CLUTCH KIT.
- SOME PARTS OF THE CLUTCH AND ITS COMPONENTS CAN HAVE SHARP SURFACE: HANDLE WITH CARE.
- SOME COMPONENTS OF THE CLUTCH, BECAUSE OF THEIR SMALL DIMENSIONS CAN BE SWALLOWED: KEEP AWAY FROM CHILDREN.

STM ITALY

Via A. Olivetti 15 - 10020 - Riva presso Chieri (TO)

www.stmitaly.com - contact@stmitaly.com

